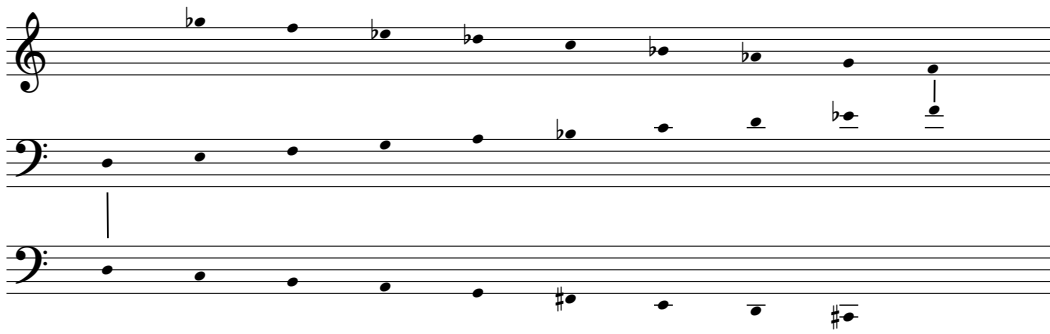


# An der Nordsee

per organo

Carlotta Ferrari 2020

## Intervallic Mirror Point



Olga Wisinger-Florian, An der Nordsee

**Lento, senza tempo**

The musical score for 'The Rose Tree' is presented in three systems. The first system consists of a grand staff (treble and bass clefs) and a single bass staff below. The second system continues the grand staff and the single bass staff. The third system shows the grand staff with a repeat sign at the end, while the single bass staff continues. The music is in 2/4 time, with a key signature of one flat (B-flat). The tempo is marked 'moderato'. The first system includes a piano (p) dynamic marking at the beginning and a mezzo-forte (mp) marking at the end. The second system includes a mezzo-forte (mp) marking at the beginning and a piano (p) marking at the end. The third system includes a mezzo-forte (mp) marking at the beginning. The melody is primarily in the treble clef, with the bass clef providing harmonic support. The single bass staff at the bottom appears to be a separate line, possibly for a basso continuo or a second bass part, which is mostly silent in the first system and has some notes in the second and third systems.

The musical score for 'The Rose Tree' is presented in two systems. The first system features a grand staff with a treble and bass clef. The treble staff contains the melody, starting with a whole note G4, followed by a half note A4, and then a series of eighth notes. The bass staff provides a harmonic accompaniment with chords and single notes. The second system continues the melody in the treble staff and the accompaniment in the bass staff. The score includes dynamic markings such as *mf* (mezzo-forte) and *p* (piano), and a crescendo hairpin indicating a gradual increase in volume towards the end of the piece.