

Oboe 1

Alma de la Tierra

Fernando Giunta

1-El edem-Atuel y su amigos-Fiesta en la aldea

Tranquilo ♩ = 76

6

4

pp *mf*

13

2

mf

tr

mf

rit......

2

21

a tempo

25

5

mp

3

3

3

3

p

32

A

35

15

rit......

1

a tempo

3

tr

56

tr

tr

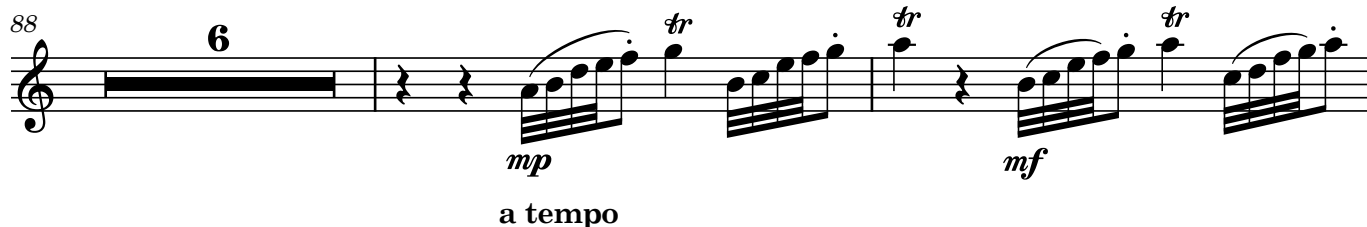
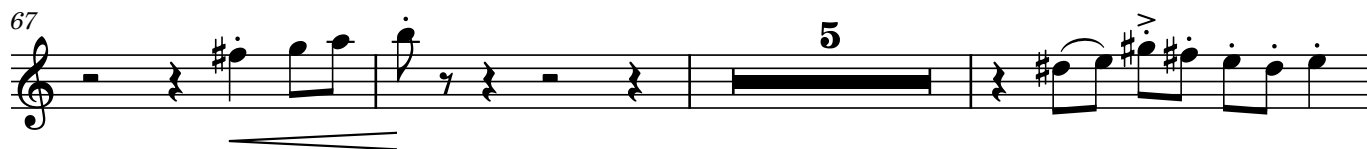
tr

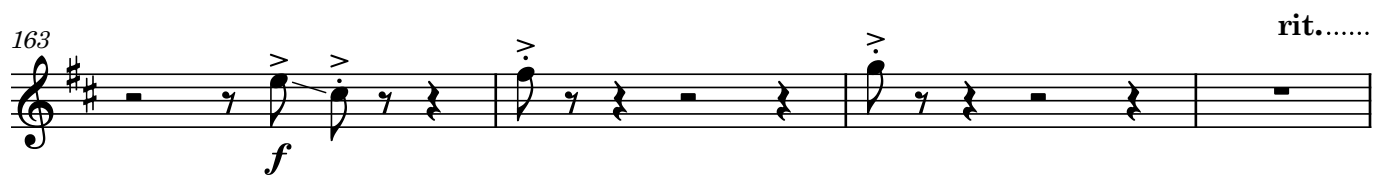
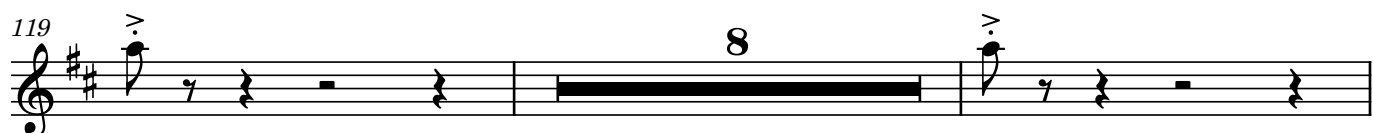
61

rit......

a tempo ♩ = 116

mp





230 *p* 4

238 *p* 4

246 *mp* 12

262 *mf* *frull.* *tr* *gliss.* *nat.* 11 *frull.* *frull.* *mp* *mf*

278 *mp* *nat.*

284 *f* *p*

289 *mf* *f* *mf*

295

301 *fp* *mf*

[illegible][illegible]

325

tr

4

mf

333

The musical score for measures 333-338 is written on a single staff. The key signature has three sharps (F#, C#, G#). Measure 333 starts with a mezzo-piano (*mp*) dynamic and contains eighth notes. A crescendo hairpin spans from measure 333 to measure 337. Measure 334 continues the eighth-note pattern. Measure 335 begins with a mezzo-forte (*mf*) dynamic and features a change in rhythm to quarter notes. Measure 336 contains two whole rests. Measure 337 contains one whole rest. Measure 338 contains two whole rests. Above measure 338 are markings for a second ending: a bracket labeled "2" followed by a bar line, and another bracket labeled "4". The tempo marking "rit....." is positioned above the final measure.

Allegretto ♩. = 82

Tamb.

343 rit.....♩ = 30 G

1 25 18

390

f

395

f

399

399

402

406 **6**

mf

414

5

422 **H**

mf *f* *p* *mp*

428

mf *mf*

434

mf

439

mf

445 **I** ♩ = 82

f

450 **rit.**..... ♩ = 76 *tr*

ff

Oboe

Alma de la Tierra

Fernando Giunta

II-La Sequía

♩ = 66

A

11 **14**

27 **B**

fp *mp*

31 **2**

36 **C** **D** **E** **F** rit..... a tempo ♩ = 66

1 **5** **5** **1** **3**

51 **G** **2** rit..... **H** a tempo **I**

1 **15** **3**

Oboe 1

Alma de la Tierra

Fernando Giunta

3-Guerra por las Tierras

$\text{♩} = 126$

ff *ff* *f*

5

9 1. 2. rit..... frull. **A** a tempo 27

40 **B** 20 **C** 16

78 7

88 *mf* **D**

91 12

105 *f* *f* *f*

108 **E**

113 **1** **2** **16**

134 **F** **4** *mp*

141 *mf* **G**

145 **1** *f* *mp* *mf*

150 **1** **3**

156

161 **2** *mp*

167 *mf* *ff* *tr*

3

rit......

[illegible]

179 **45**

I

mf

226 **8**

f

237 **7**

247 *f*

250 frull. frull. frull. *gliss.* **J** *tr* *gliss.*

255 nat. *mf*


259 *f*

263 frull. *mf* *mf* *mf*

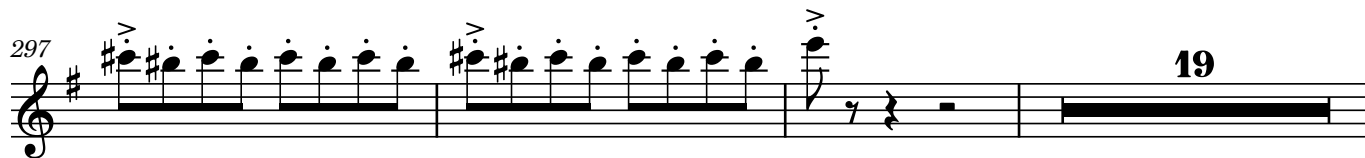
266 *mf* *mf*

269 **K** nat. *mf* *ff*

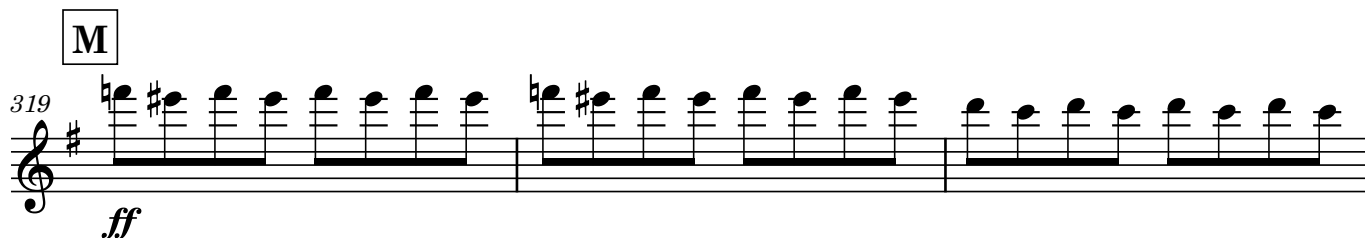
272 **23** **L**



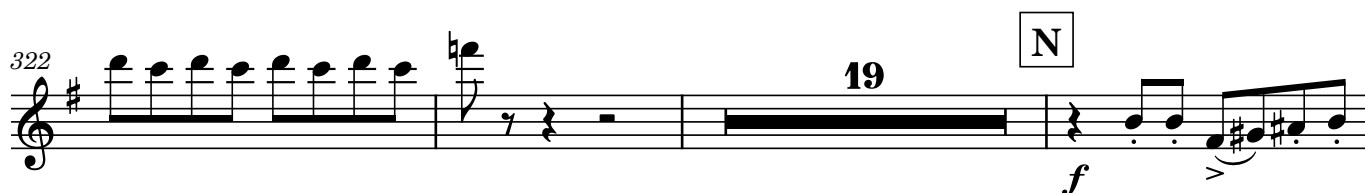
297 **19**



319 **M** *ff*



322 **19** **N** *f*



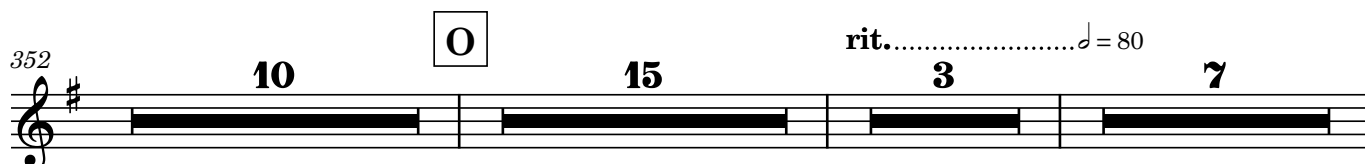
344



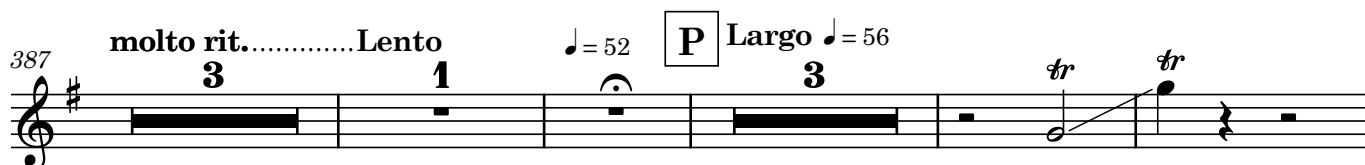
348



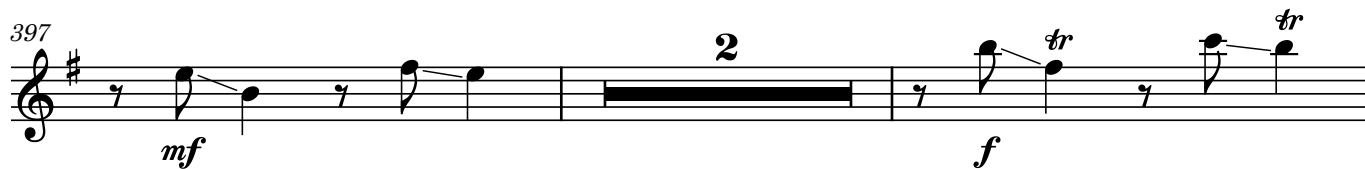
352 **10** **O** **15** **3** **7** *rit.*.....♩ = 80



377 *molto rit.*.....Lento **3** **1** **P** *Largo* ♩ = 56 **3** *tr* *tr*



397 **2** *mf* *f* *tr* *tr*



401

3 3 3 3

1

404

Q

molto rit. a tempo

1 2 1

Oboe 1

4-Alma de la Tierra

Fernando Giunta

4-Atuel y clara uyen a la momtaña-Sueña-El milagro

Andante $\text{♩} = 54$

6

mp

2

10

p mp

4

p

16

1

p

1

20

rit..... a tempo

9

rit....

32

A $\text{♩} = 92$

1

frull. *tr*

p

$\text{♩} = 100$

rit....a tempo

39

nat. *tr*

nat. frull. *tr*

Andante $\text{♩} = 58$

1

45

frull. *tr*

mp

2

1

5

55

rit..... a tempo

4

1

nat. *tr*

2

B

65 **rit.**.....♩ = 62

1 2 *tr* *mf* *tr* 3

73 **accel.**.....♩ = 110

1 2 >

78 **C** ♩ = 110 **accel.**.....

1 3 1

85 **D** ♩ = 120 Violín

1 > *mf*

89 8 >

99 > *mf* 2

103 **E** **rit.**..... **a tempo**

f 3 1

110 **rit.**..... **a tempo** **F**

1 6 > > > > >

120 *tr* *fp* *gliss.* 11

133 rit.....

Staff 133-136: Treble clef, key of D major. Measures 133-136. Measure 133 has a forte (f) dynamic. Measure 136 has a flat accidental on the eighth note. The staff ends with a repeat sign.

137a tempo G a tempo

Staff 137-140: Treble clef, key of D major. Measures 137-140. Measure 137 has a first ending bracket. Measure 139 has a first ending bracket. The staff ends with a repeat sign.

141 a tempo

Staff 141-144: Treble clef, key of D major. Measures 141-144. Measure 141 has a second ending bracket. Measure 144 has a sixth ending bracket. The staff ends with a repeat sign.

151

Staff 151-154: Treble clef, key of D major. Measures 151-154. Measure 154 has a sixth ending bracket. The staff ends with a repeat sign.

159 rit..... arco H $\text{♩} = 66$ 6

Staff 159-166: Treble clef, key of D major. Measures 159-166. Measure 159 has a forte (ff) dynamic. Measure 160 has a tempo marking of quarter note = 80. Measure 166 has a half note = 66. The staff ends with a repeat sign.

167 1 3 1

Staff 167-170: Treble clef, key of D major. Measures 167-170. Measure 167 has a forte (ff) dynamic. Measure 169 has a forte (ff) dynamic. The staff ends with a repeat sign.

171 rit..... I Adagietto $\text{♩} = 69$ 14

Staff 171-189: Treble clef, key of D major. Measures 171-189. Measure 171 has a forte (ff) dynamic. Measure 172 has a first ending bracket. Measure 189 has a first ending bracket. The staff ends with a repeat sign.

190 rit.....a tempo 2 4 p

Staff 190-199: Treble clef, key of D major. Measures 190-199. Measure 190 has a forte (ff) dynamic. Measure 191 has a forte (ff) dynamic. Measure 199 has a forte (ff) dynamic. The staff ends with a repeat sign.

200 3 rit.....

Staff 200-203: Treble clef, key of D major. Measures 200-203. Measure 200 has a forte (ff) dynamic. Measure 203 has a forte (ff) dynamic. The staff ends with a repeat sign.

207 **J** a tempo

p

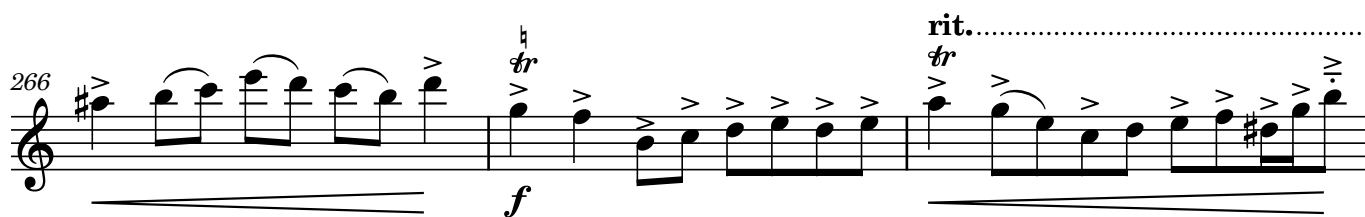
216 *Riten.* $\text{♩} = 60$ **K** Andante $\text{♩} = 90$ a tempo

238 rit..... **L** $\text{♩} = 76$ *mf*

247

251 *mp*

257

M**N**