

Quintets from Cantata 162.1 (6 to 5 parts reduction)

LET VOICE SOLO PARTS ALWAYS PREDOMINATE

J. S. Bach [arr. Lang and Bartoli/ ed. Lang] BWV 162.1
Aria for Corno, Strings, Bass, Fagotto and Bc "Ach, ich sehe"
arr. in 5 parts: 1. and 2. Violin, 3. Viola, 4. Viola or Cello, 5. Cello

Vla. $\text{♩} = 84$

1 Violin bwv 162.1 s5

2 Violin bwv 162.1 s5

3 Viola bwv 162.1 s5

4 Viola with Bass Solo bwv 162.1 s5

4 Violoncello with Bass Solo bwv 162.1 s5

5 Violoncello for Bc bwv 162.1 s5

4

Vln. 1

Vln. 1

Vla.

Vla.

Vc.

Vc.

7

Vln. 1

Vln. 1

Vla.

Vla.

Vc.

Vc.

poco rit.

p

p

p

ff

ff

mf

Solo

Solo

10

Vln. 1

Vln. 1

Vla.

Vla.

Vc.

Vc.

tr~

13

Vln. 1

Vln. 1

Vla.

Vla.

Vc.

Vc.

16

Vln. 1

Vln. 1

Vla.

Vla.

Vc.

Vc.

mf

mf

mf

Tutti

mf

Tutti

mf

f

19

19

Vln. 1

Vln. 1

Vla.

Vla.

Vc.

Vc.

22

22

Vln. 1

Vln. 1

Vla.

Vla.

Vc.

Vc.

poco rit.

tr

poco rit.

tr

poco rit.

poco rit.

poco rit.

poco rit.

25

25

Vln. 1

Vln. 1

Vla.

Vla.

Vc.

Vc.

p

pp

p

pp

p

Solo

mf

Solo

mf

p

tr~

tr~

p

28

Vln. 1

Vln. 1

Vla.

Vla.

Vc.

Vc.

f

f

f

31

Vln. 1

Vln. 1

Vla.

Vla.

Vc.

Vc.

tr

p

tr

p

p

Bc

Solo

ff

Bc

Solo

ff

p

35

Vln. 1

Vln. 1

Vla.

Vla.

Vc.

Vc.

38 Vln. 2

Vln. 1

Vln. 1

Vla.

Vla.

Vc.

Vc.

p

p

p

tr

tr

42

Vln. 1

Vln. 1

Vla.

Vla.

Vc.

Vc.

tr

pp

pp

pp

mf

mf

p

46

Vln. 1

Vln. 1

Vla.

Vla.

Vc.

Vc.

tr

p

tr

p

f

rit.

rit.

rit.

f

f

f

f

mp

rit.

f

Tutti

Tutti

f

A tempo

50

Vln. 1

Vln. 1

Vla.

Vla.

Vc.

Vc.

53

Vln. 1

Vln. 1

Vla.

Vla.

Vc.

Vc.

rit.

rit.

rit.

rit.

rit.

rit.

1 Violin bwv 162.1 s5

Quintets from Cantata 162.1 (6 to 5 parts reduction)

LET VOICE SOLO PARTS ALWAYS PREDOMINATE

J. S. Bach [arr. Lang and Bartoli/ ed. Lang] BWV 162.1

Aria for Corno, Strings, Bass, Fagotto and Bc "Ach, ich sehe"

arr. in 5 parts: 1. and 2. Violin, 3. Viola, 4. Viola or Cello, 5. Cello

Vla. $\text{♩} = 84$

6 *f*

11 *p*

17 *mf*

23 *poco rit.* *p* *pp*

28 *f* *tr* *p*

34 Vln. 2 *p*

41 *pp*

45 *tr* *p* *rit.* *f* **A tempo**

50

54 *rit.*

2 Violin bwv 162.1 s5

Quintets from Cantata 162.1 (6 to 5 parts reduction)

LET VOICE SOLO PARTS ALWAYS PREDOMINATE

J. S. Bach [arr. Lang and Bartoli/ ed. Lang] BWV 162.1

Aria for Corno, Strings, Bass, Fagotto and Bc "Ach, ich sehe"

arr. in 5 parts: 1. and 2. Violin, 3. Viola, 4. Viola or Cello, 5. Cello

Vla. $\text{♩} = 84$

f

5

poco rit. *p*

9

tr

14

17

mf *f*

20

22

tr *poco rit.*

25

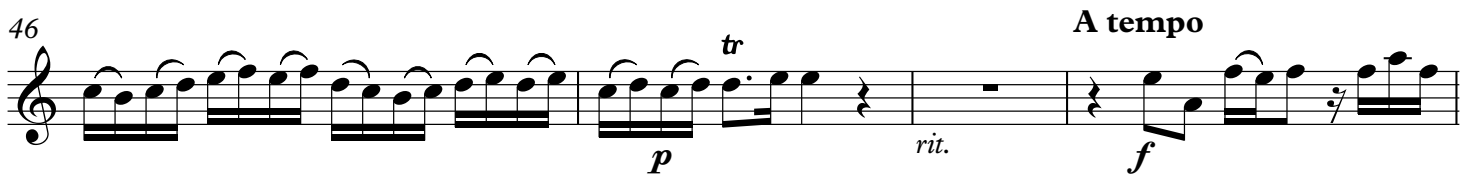
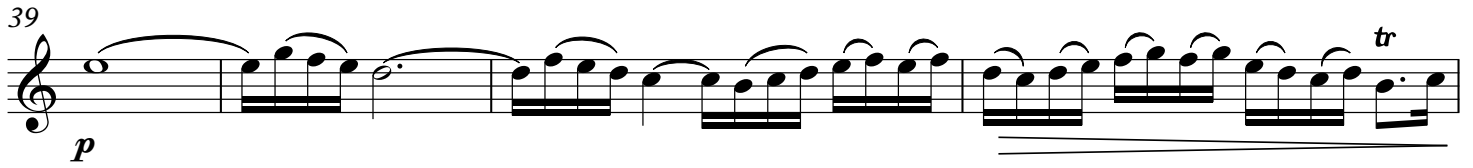
p *pp*

30

f

33

tr *p*



3 Viola bwv 162.1 s5

Quintets from Cantata 162.1 (6 to 5 parts reduction)

LET VOICE SOLO PARTS ALWAYS PREDOMINATE

J. S. Bach [arr. Lang and Bartoli/ ed. Lang] BWV 162.1

Aria for Corno, Strings, Bass, Fagotto and Bc "Ach, ich sehe"

arr. in 5 parts: 1. and 2. Violin, 3. Viola, 4. Viola or Cello, 5. Cello

Vla. $\text{♩} = 84$

f

5

poco rit.

8

p

13

18

mf

22

poco rit. *p* *pp*

27

f

32

p

37

p

41

tr

pp

45

p

rit.

49 **A tempo**

f

53

rit.

4 Viola with Bass Solo bwv 162.1 s5

Quintets from Cantata 162.1 (6 to 5 parts reduction)

LET VOICE SOLO PARTS ALWAYS PREDOMINATE

J. S. Bach [arr. Lang and Bartoli/ ed. Lang] BWV 162.1

Aria for Corno, Strings, Bass, Fagotto and Bc "Ach, ich sehe"

arr. in 5 parts: 1. and 2. Violin, 3. Viola, 4. Viola or Cello, 5. Cello

♩ = 84
Tutti

f

5

poco rit.

8

Solo

p ff

12

15

Tutti

mf

20

23

Solo

poco rit. *p mf*

26

tr

29

2 Bc Solo *ff*

34

37

40

tr

43

mf

47

f *rit.* *f*

A tempo Tutti

51

54

rit.

4 Violoncello with Bass Solo bwv 162.1 s5

Quintets from Cantata 162.1 (6 to 5 parts reduction)

LET VOICE SOLO PARTS ALWAYS PREDOMINATE

J. S. Bach [arr. Lang and Bartoli/ ed. Lang] BWV 162.1

Aria for Corno, Strings, Bass, Fagotto and Bc "Ach, ich sehe"

arr. in 5 parts: 1. and 2. Violin, 3. Viola, 4. Viola or Cello, 5. Cello

$\text{♩} = 84$
Tutti

f

5

poco rit.

8

Solo

p *ff*

12

15

Tutti

mf

20

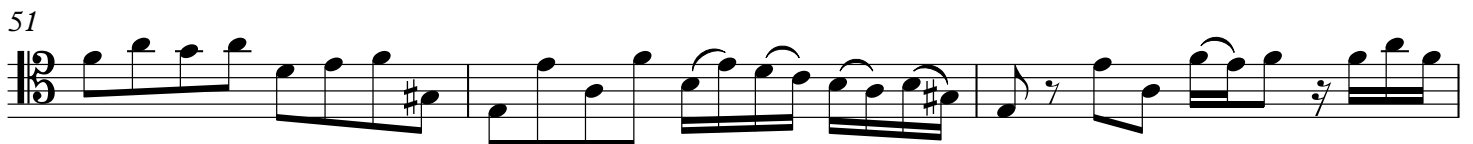
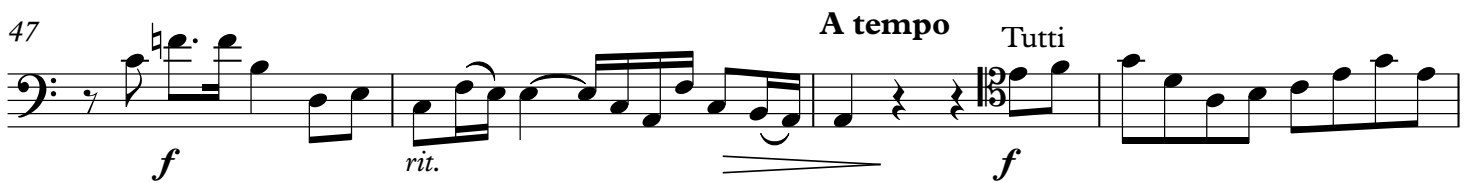
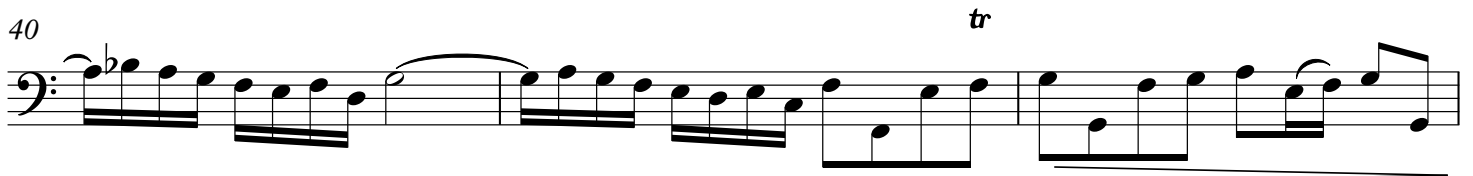
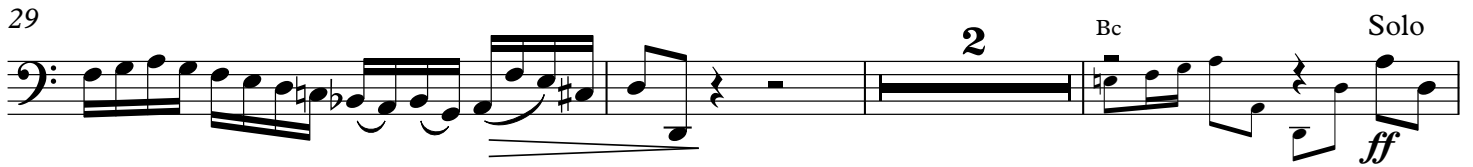
23

Solo

poco rit. *p* *mf*

26

tr



5 Violoncello for Bc bwv 162.1 s5

Quintets from Cantata 162.1 (6 to 5 parts reduction)

LET VOICE SOLO PARTS ALWAYS PREDOMINATE

J. S. Bach [arr. Lang and Bartoli/ ed. Lang] BWV 162.1

Aria for Corno, Strings, Bass, Fagotto and Bc "Ach, ich sehe"

arr. in 5 parts: 1. and 2. Violin, 3. Viola, 4. Viola or Cello, 5. Cello

♩ = 84

6 *f*

11 *poco rit.* *mf*

16 *f*

21 *poco rit.* *p*

26 *f*

31 *p*

36 *p*

41 *p*

46 *A tempo*

51 *mp* *rit.* *f*

rit.