

6

*Suites a  
Violoncello Solo*

*senza*

*Basso.*

*transposées pour*

*Violino Solo*

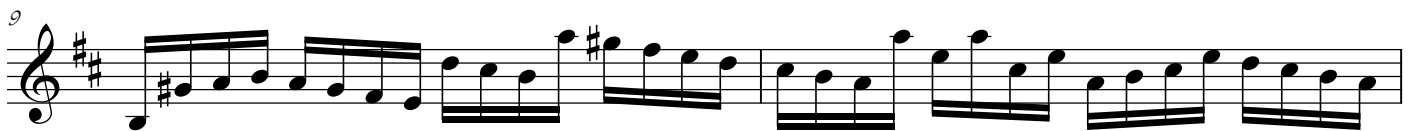
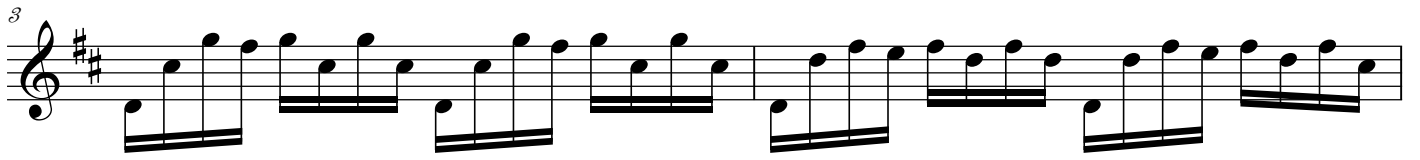
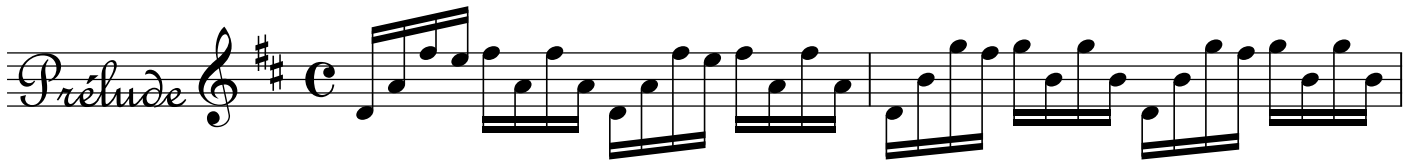
*composées*

*par*

*Sr. J. S. Bach.*

*Maitre de Chapelle.*

# Suïtte 1<sup>re</sup>



21

23

25

27

29

31

33

I

II

( a corde doppia )

35

37

39

41



*Courante* 

4

8 *tr*

12 *tr*

15 *tr*

/19

23 *tr*

27

31

35 *tr*

39

Sarabande  $\text{3/4}$   $\text{F\#}$

4  $\text{tr}$

7

11  $\text{tr}$

14

Menuet  $\text{3/4}$   $\text{F\#}$   
1re.

5

10

15

20

Menuet  $\text{3/4}$   $\text{F\#}$   
2de.

5

9

13

17

21

Mouset  
1re. Da Capo

Gigue

5

9

/13

17

22

27

31/

Fine

# The Structure of the Prélude from the 1st Cello Suite of J.S. Bach: "Calendar"

The image displays a musical score for the Prélude from the 1st Cello Suite of J.S. Bach, titled "Calendar". The score is organized into seven distinct sections, numbered 1 through 7, which are separated by vertical dashed lines. Each section is presented on a system of two staves. The first system (measures 1-14) and the second system (measures 15-28) each contain measures 1-7 and 8-14 respectively. The third system (measures 29-42) contains measures 29-35 and 36-42. The notation includes various rhythmic patterns, such as eighth and sixteenth notes, and rests. The key signature is one sharp (F#), and the time signature is common time (C). The score concludes with a double bar line at measure 42.