

D O D E C I

P A D O V A N E,

E T A L T R E T A N T E

G A G L I A R D E,

Composte nelli dodeci modi:

Con due C A N Z O N E fatte alla Francese,
per sonare à S E I:

Di C O R N E L I O S C H V Y T, *Hollandese,*
Organista della famosa Città di Leyda.



I N L E Y D A,
Nella stampa de' Rafelengi,

I 6 1 1.

Res. Vm⁷. 42.

ALLI MOLTO MAGNIFICI,

prudentissimi & virtuosissimi Signori,

GIACOMO VERMY,

BARTHOLOMEO DE PANHVYSEN,

CIRIACO DE TRITSOM,

STEFANO DE HEVSSEN,

NICOLAO DE SWEETEN.

Signori & patroni miei offeruandissimi,
amatori & fautori della Musica,

Q V E S T A M I A O P E R A
delle PADOVANE & GAGLIARDE

offerisco & dedico

CORNELIO SCHVYT.



IN LEYDA
per la Stamperia de R. R. R.
1611



Canzon





Padouana 1.



Gagliarda 1.

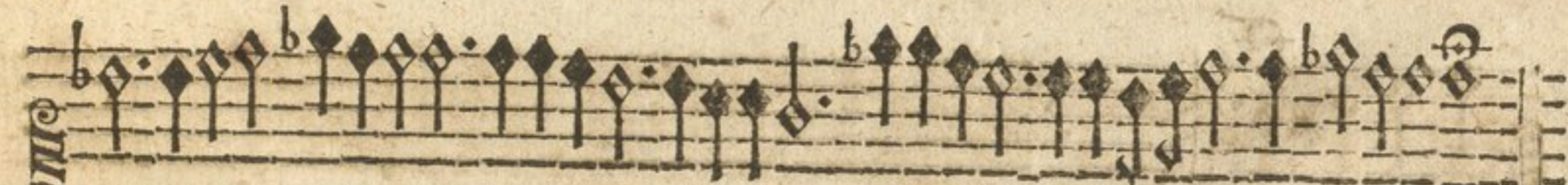




Padouana 2.



Galliarde 2.

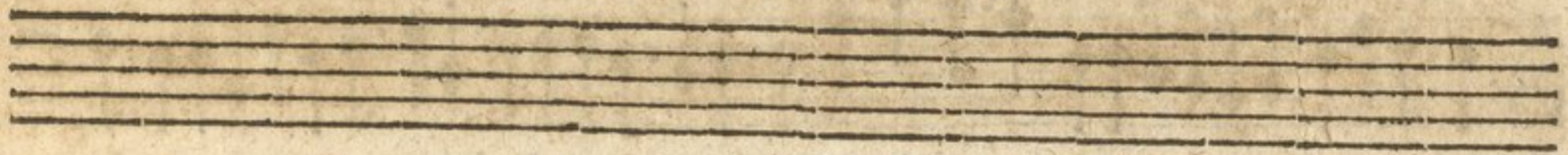


Padouana 3.

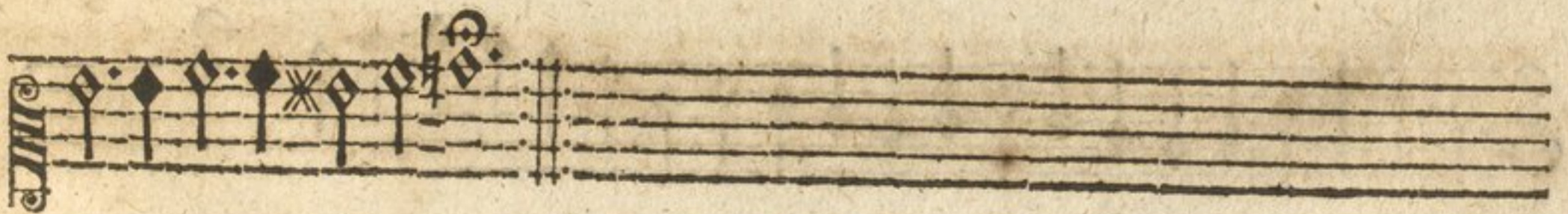
Galliarda 3.



Padouana 4.

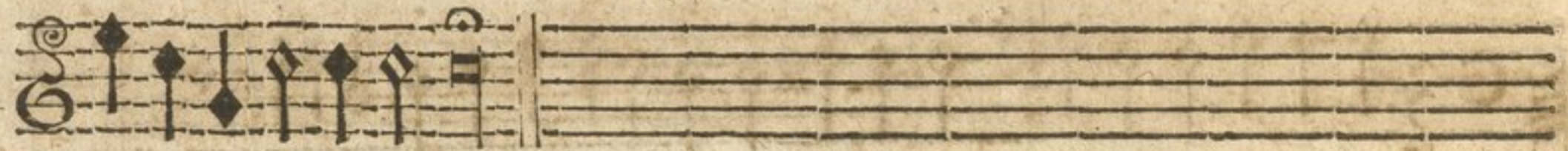


Galliarda 4.





Padouana 5.

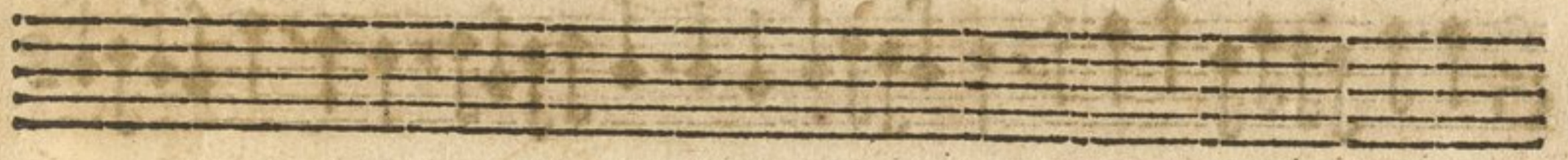
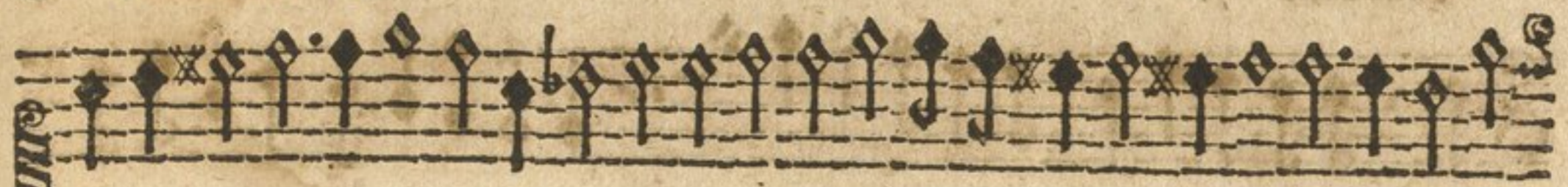


Galliarda 5.





Padouana 6.



Gagliarda 6.



10 Del Settimo Modo. CANTO.



Padouana 7.



Gagliarda 7.





Padouana 8.



Gagliarda 8.





Padouana 9.



Gagliarda 9.





Padouana 10.



Gagliarda 10.





Padouana II.



Gagliarda II.



Del Duodecimo Modo. CANTO.

The first staff of music, featuring a treble clef and a common time signature (C). The notation consists of diamond-shaped notes with stems, typical of early printed music. The staff concludes with a double bar line and a repeat sign.

Padouana 12.

The second staff of music, continuing the notation with diamond-shaped notes and stems. It ends with a double bar line and a repeat sign.

The third staff of music, continuing the notation with diamond-shaped notes and stems. It ends with a double bar line and a repeat sign.

The fourth staff of music, continuing the notation with diamond-shaped notes and stems. It ends with a double bar line and a repeat sign.

The fifth staff of music, continuing the notation with diamond-shaped notes and stems. It ends with a double bar line and a repeat sign.

The sixth staff of music, featuring a treble clef and a common time signature (C). The notation consists of diamond-shaped notes with stems. The staff concludes with a double bar line and a repeat sign.

Gagliarda 12.

The seventh staff of music, continuing the notation with diamond-shaped notes and stems. It ends with a double bar line and a repeat sign.

The eighth staff of music, continuing the notation with diamond-shaped notes and stems. It ends with a double bar line and a repeat sign.

The ninth staff of music, continuing the notation with diamond-shaped notes and stems. It ends with a double bar line and a repeat sign.

Canzon.

FINE.

