

panu Karlu Řehákovi

# Balada

Viola solo

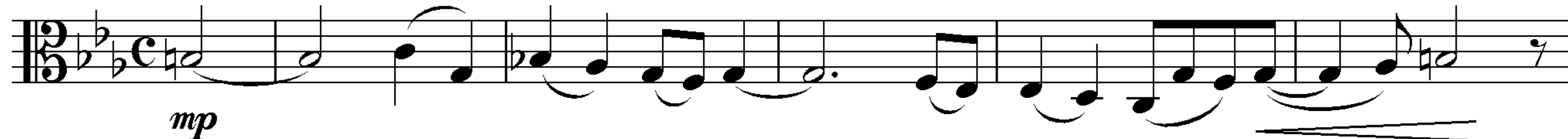
pro violu a smyčcový orchestr

Leoš Soustružník

Op. 15

Adagio ♩=60

*doloroso*



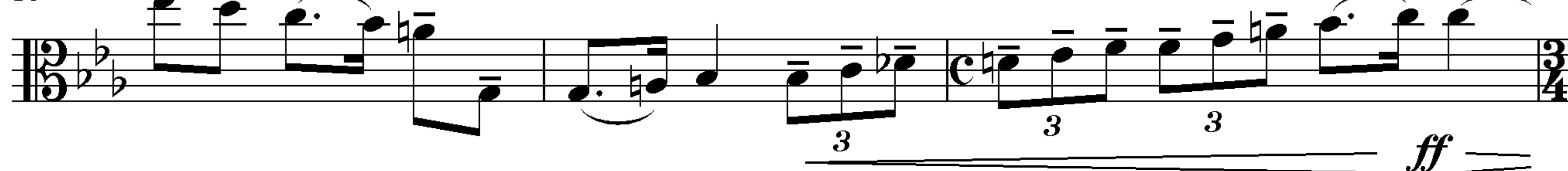
6



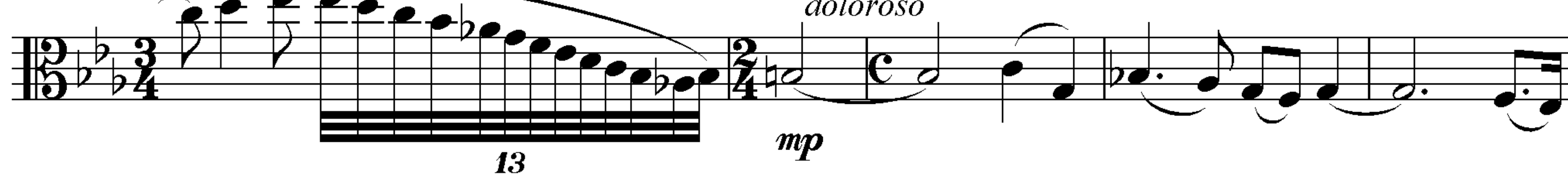
11



15



18



23



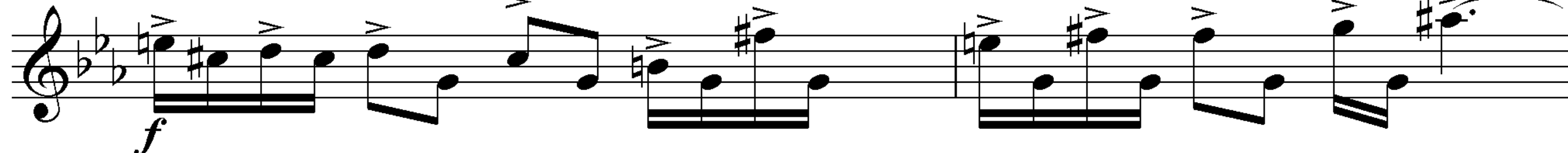
27



32



36



38



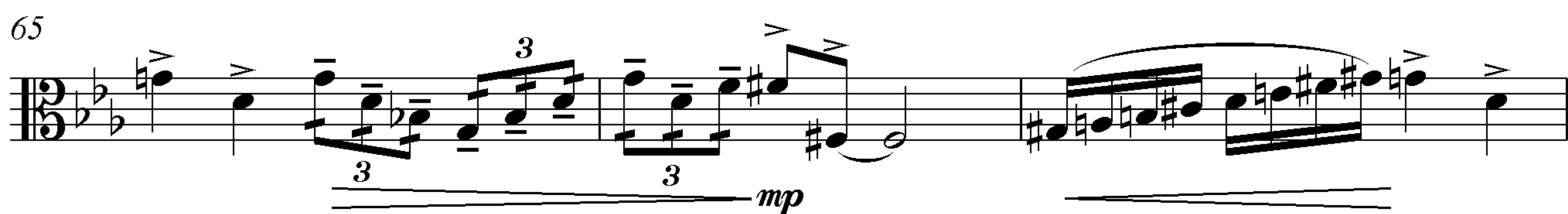
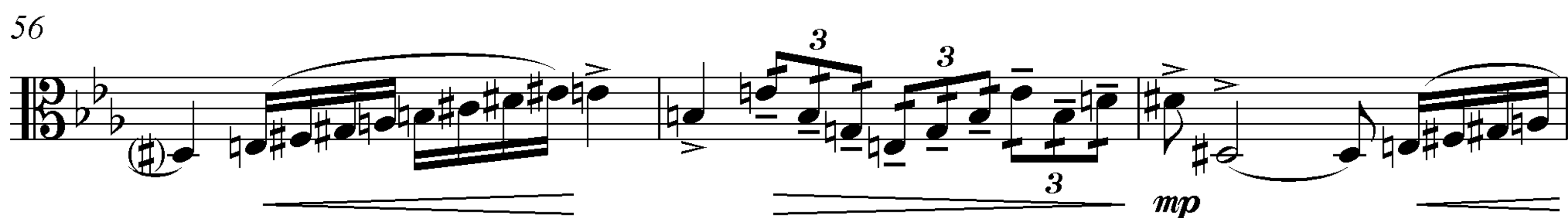
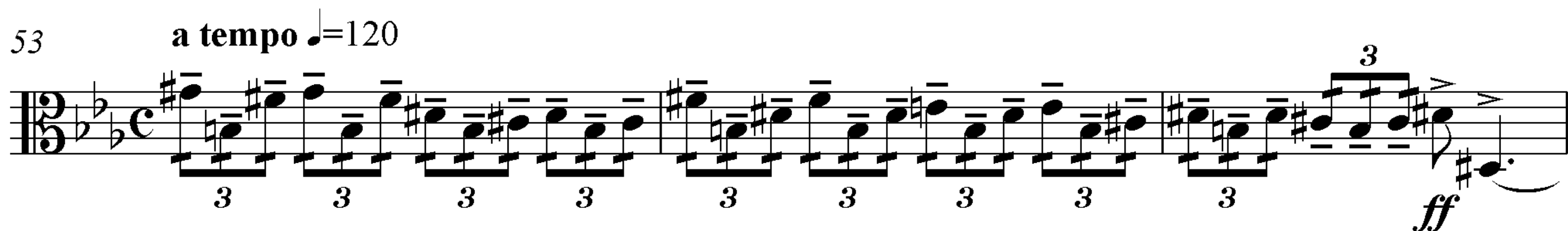
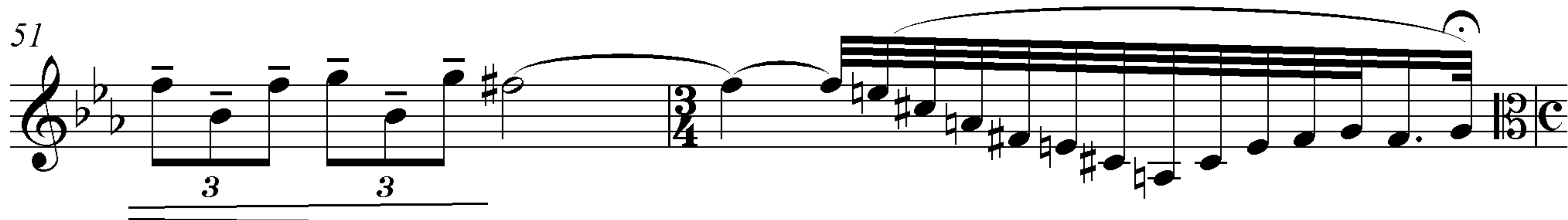
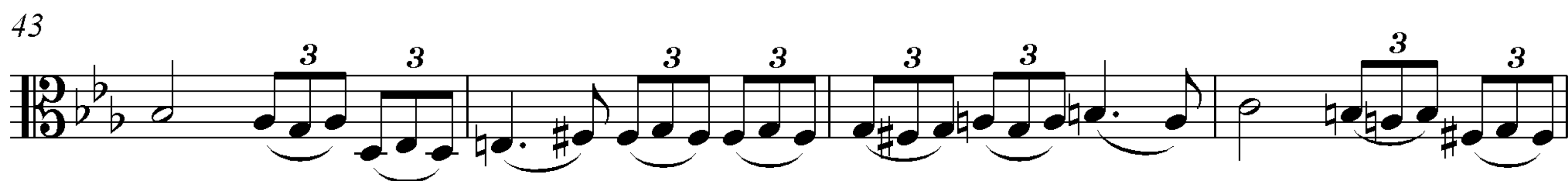
V.S.

2

Viola solo

40 molto accel.

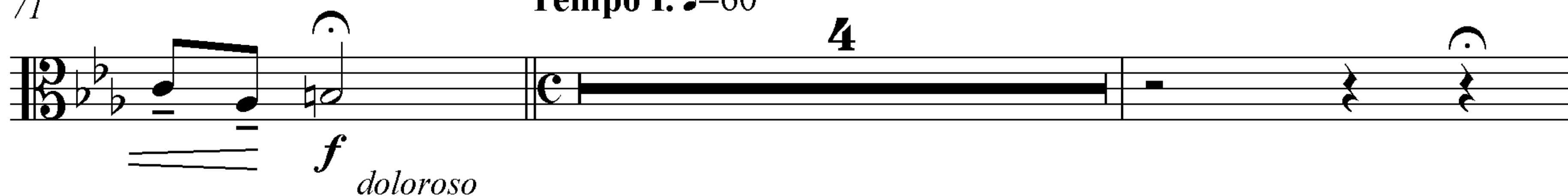
Allegro appassionato ♩=120



71

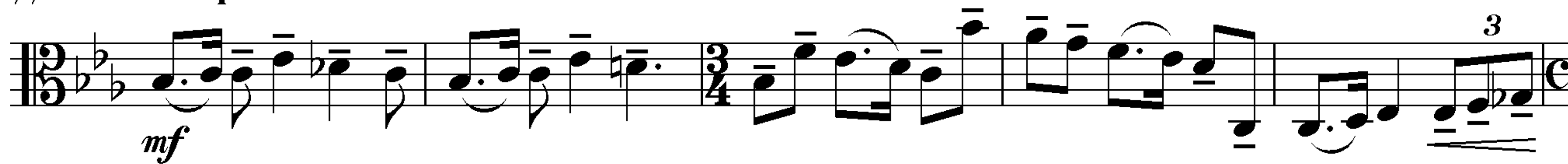
Tempo I. ♩=60

4

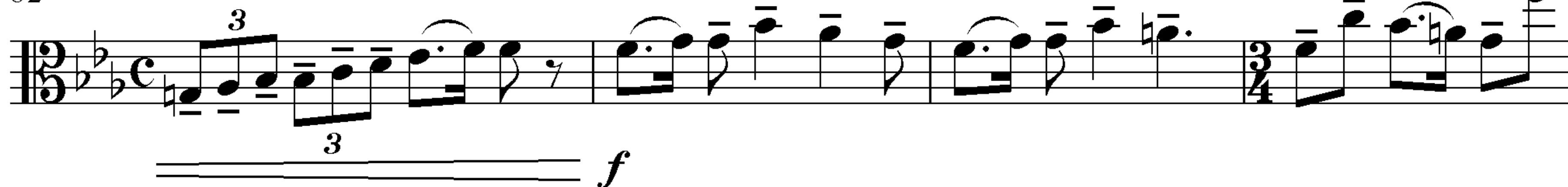


77

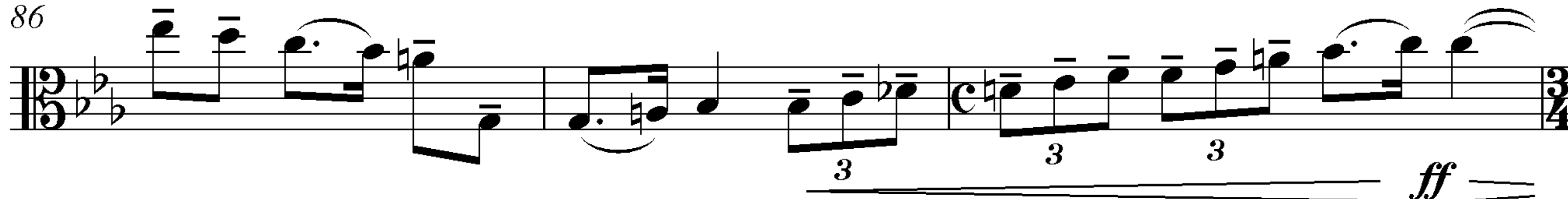
a tempo



82



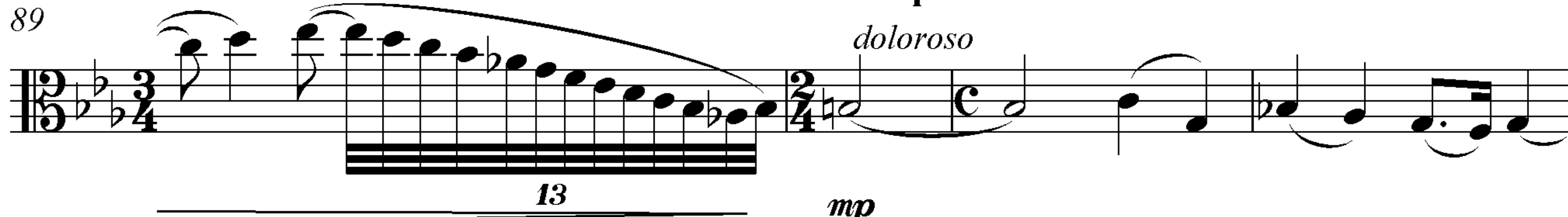
86



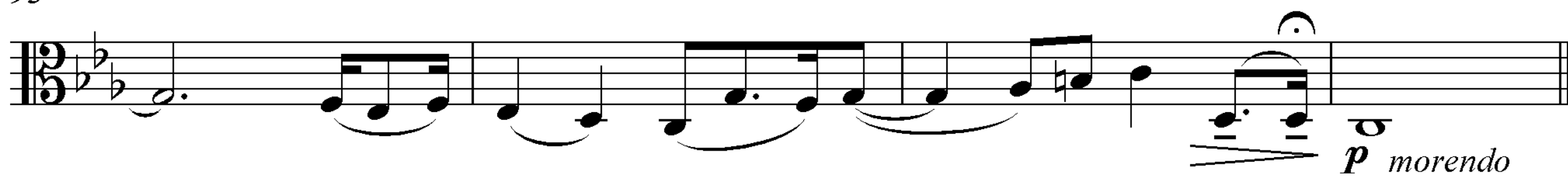
89

rit.

a tempo ♩=60

*doloroso*

93



# Balada

Violin I

pro violu a smyčcový orchestr

Leoš Soustružník

Op. 15

**Adagio** ♩=60

3

*p* *mp*

8 *mf*

13 *f* rit.

19 **a tempo** ♩=60 pizz. *p*

24 **Poco più mosso** ♩=66 arco *mf*

30 *pp*

35 *p* *mf* *pp*

40 **molto accel.** **Allegro appassionato** ♩=120 *p* *mf*

44

48 rit.

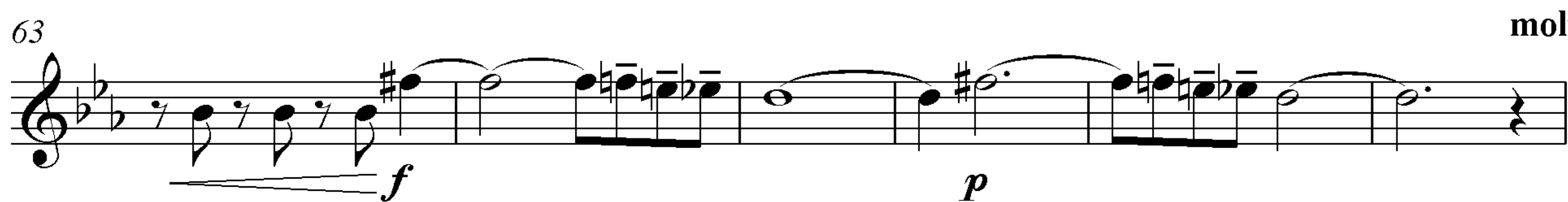
53 a tempo ♩=120



58



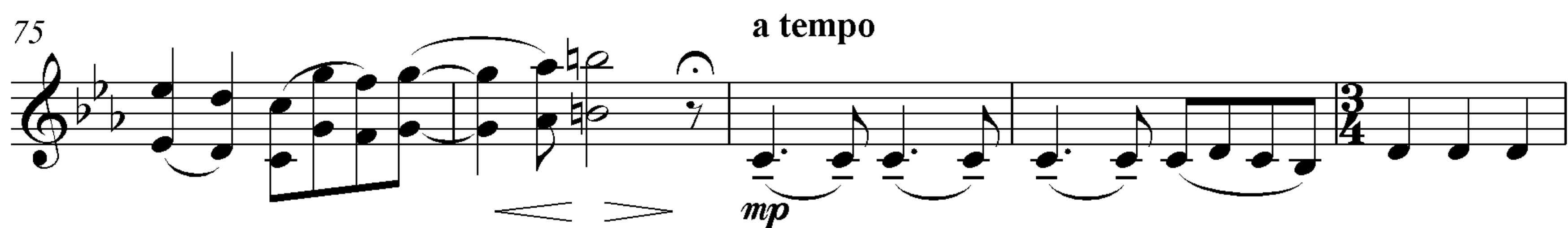
63 molto rit.



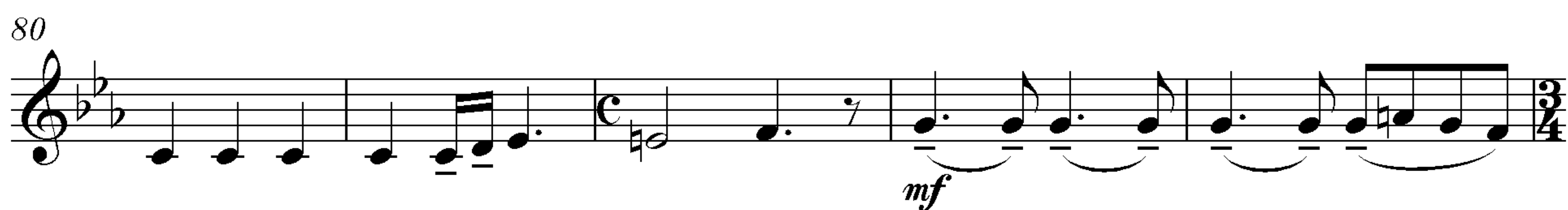
69 Tempo I. ♩=60  
doloroso



75 a tempo



80



85 rit.



90 a tempo ♩=60 pizz.



94



panu Karlu Řehákovi

# Balada

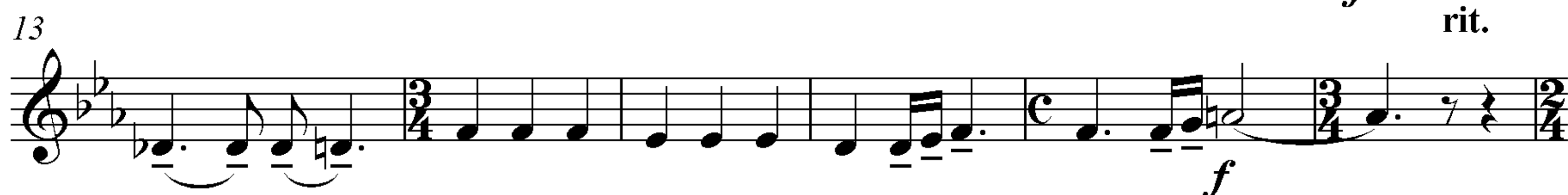
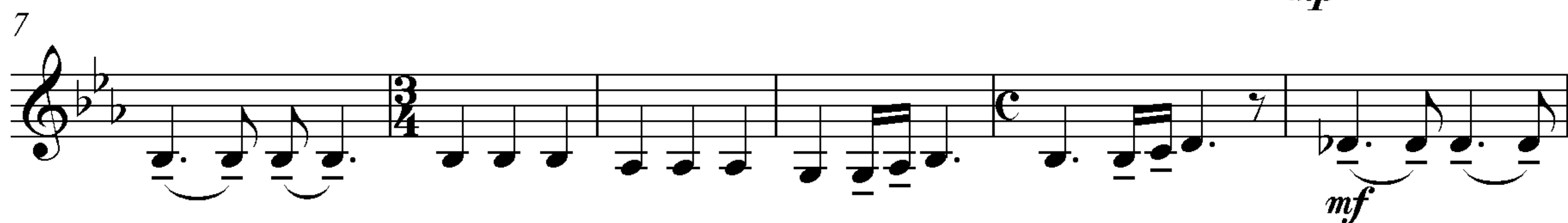
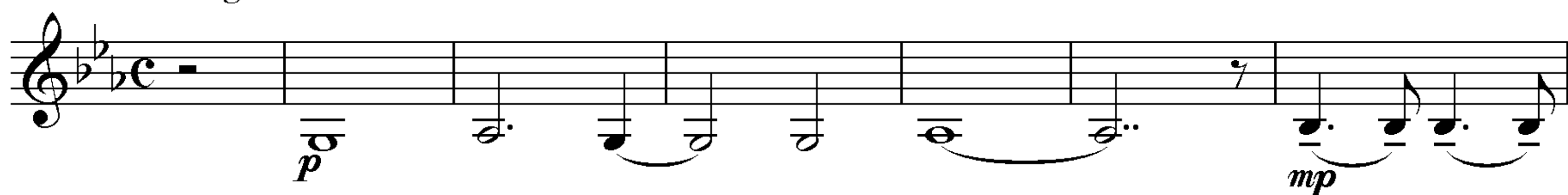
Violin II

pro violu a smyčcový orchestr

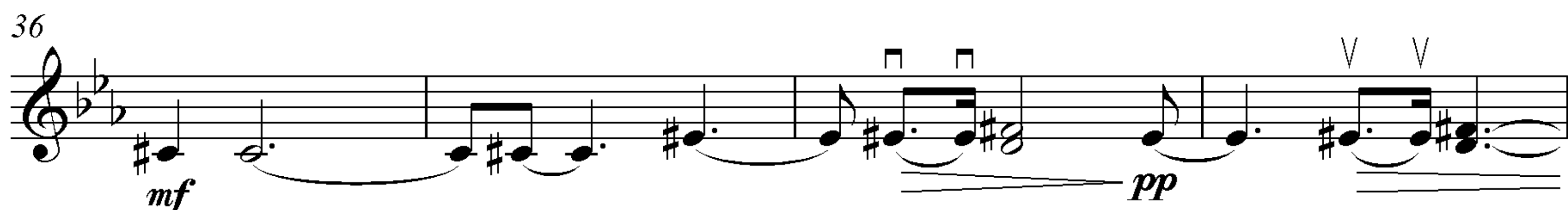
Leoš Soustružník

Op. 15

Adagio ♩=60

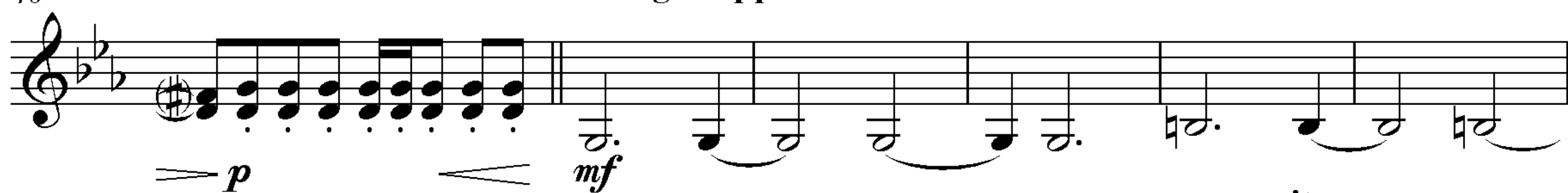


Poco più mosso ♩=66



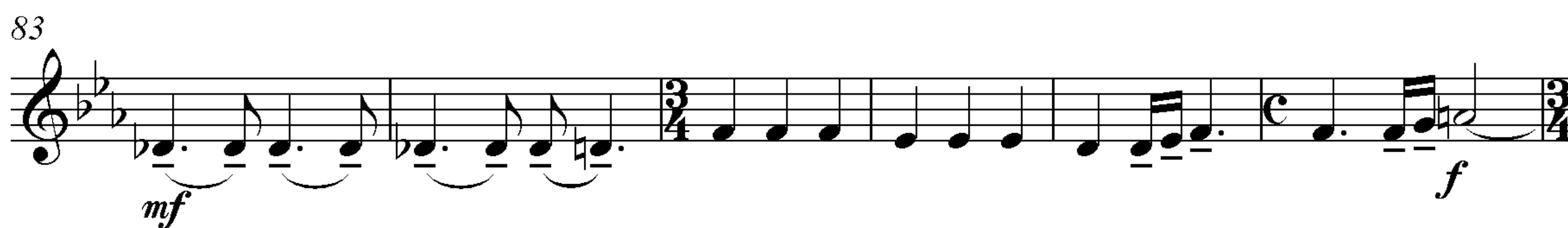
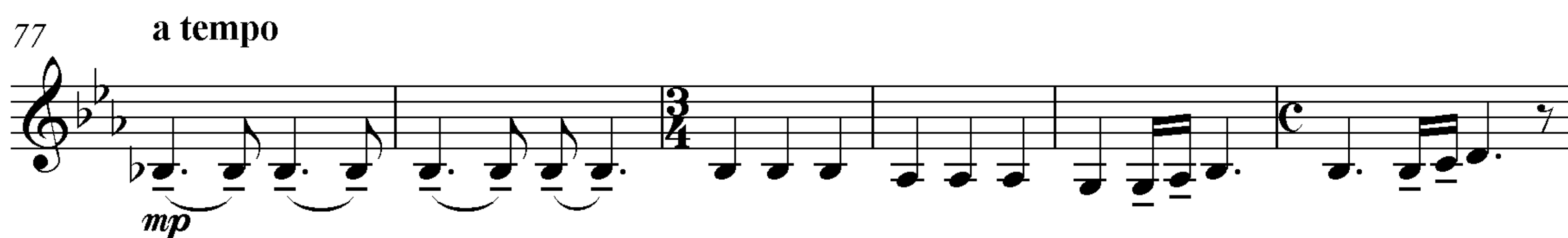
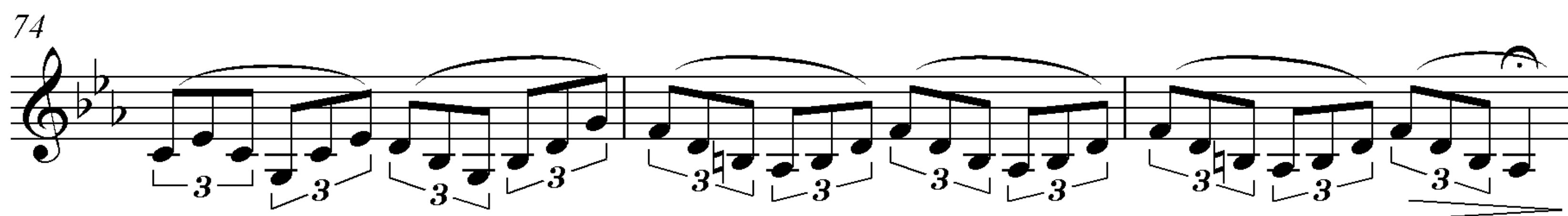
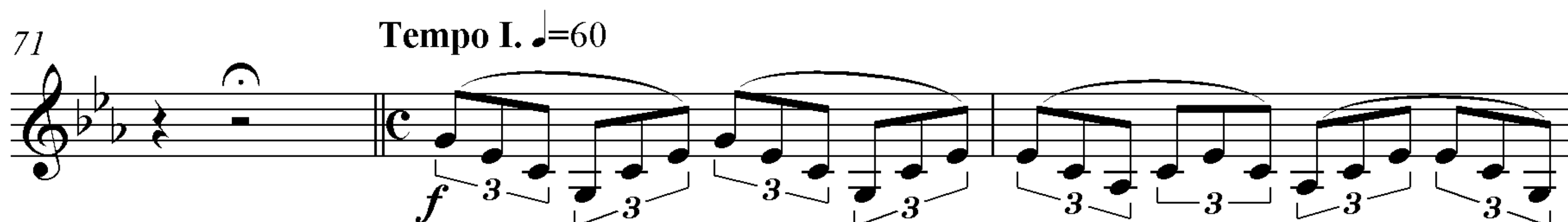
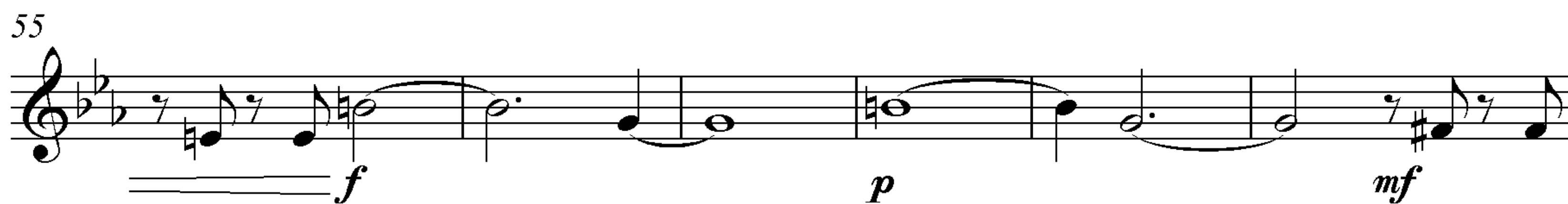
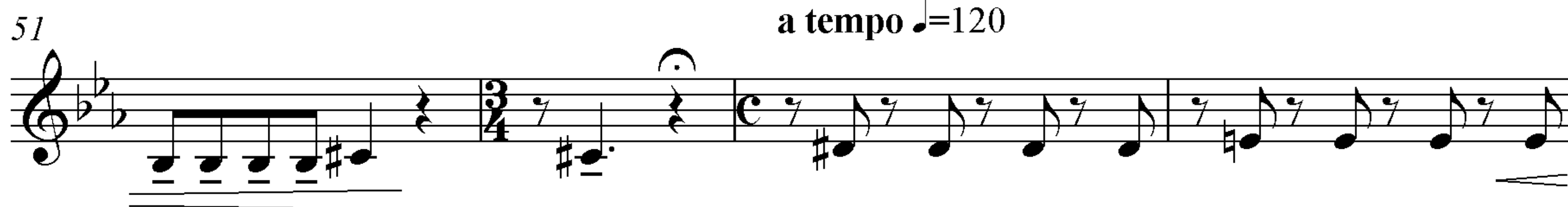
molto accel.

Allegro appassionato ♩=120



## Violin II

a tempo ♩=120



panu Karlu Řehákovi

# Balada

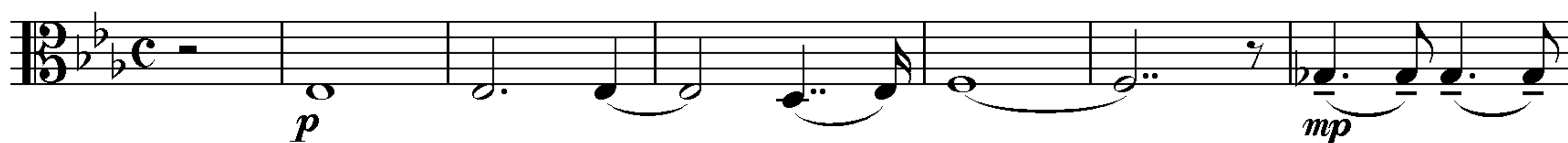
Viola

pro violu a smyčcový orchestr

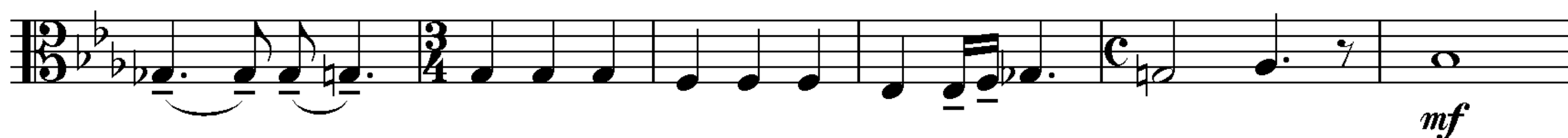
Leoš Soustružník

Op. 15

Adagio ♩=60



7



13



19

a tempo ♩=60

pizz.



22



25

Poco più mosso ♩=66

arco



31



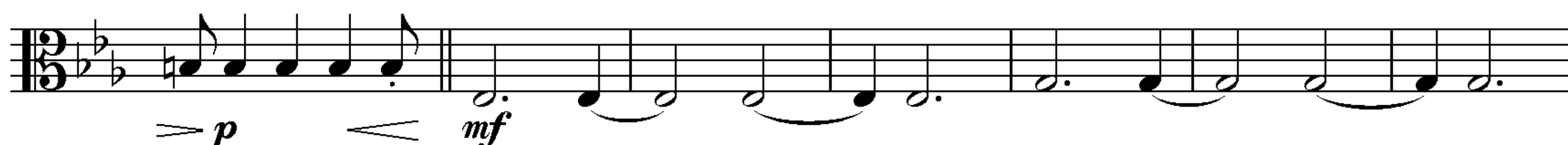
36



40

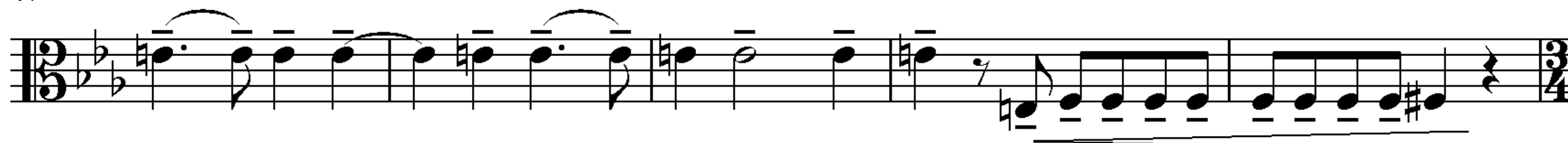
molto accel.

Allegro appassionato ♩=120



47

rit.



V.S.



52

a tempo ♩=120



57



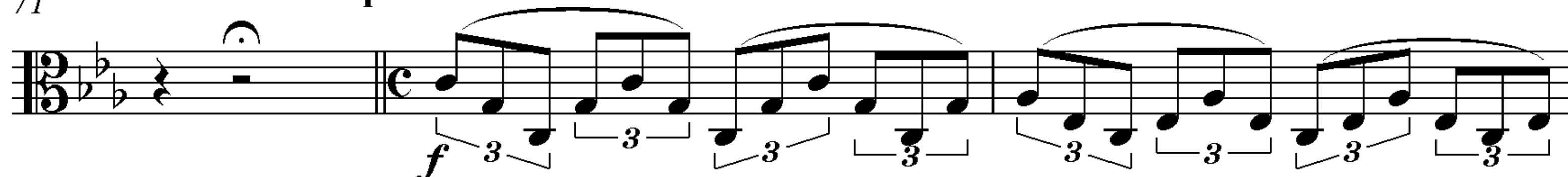
63

molto rit.

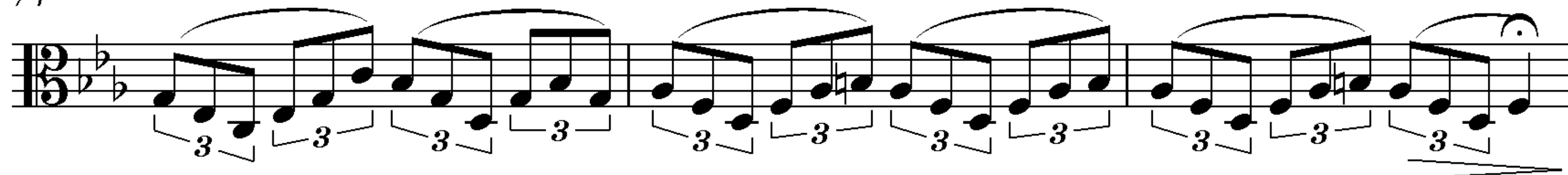


71

Tempo I. ♩=60

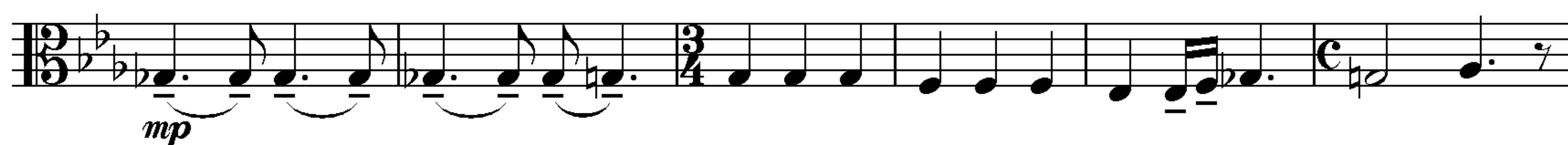


74



77

a tempo



83

rit.



90

a tempo ♩=60

pizz.



94



panu Karlu Řehákovi

# Balada

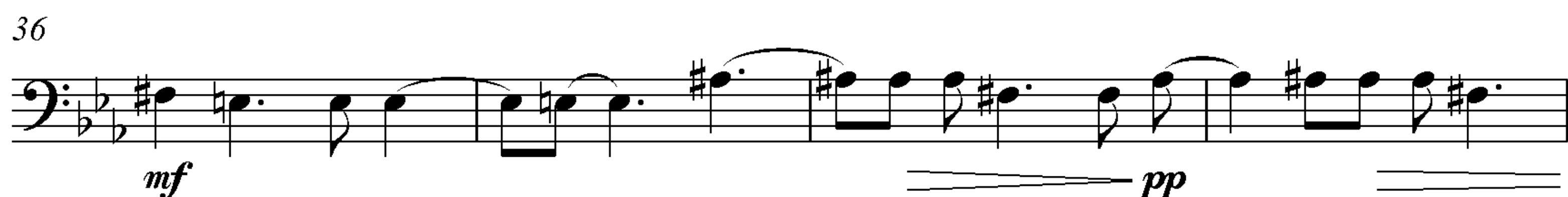
Violoncello

pro violu a smyčcový orchestr

Leoš Soustružník

Op. 15

Adagio ♩=60



V.S.

60



panu Karlu Řehákovi

# Balada

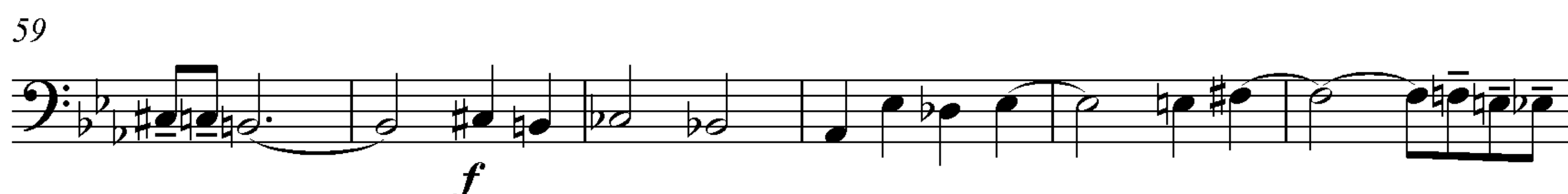
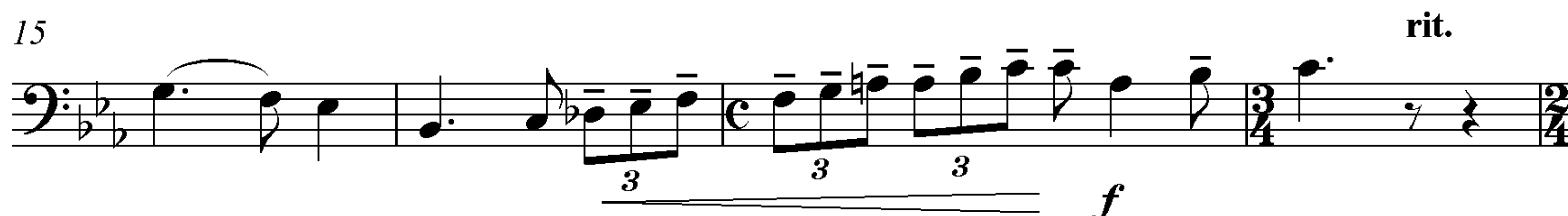
Double Bass

pro violu a smyčcový orchestr

Leoš Soustružník

Op. 15

Adagio ♩=60

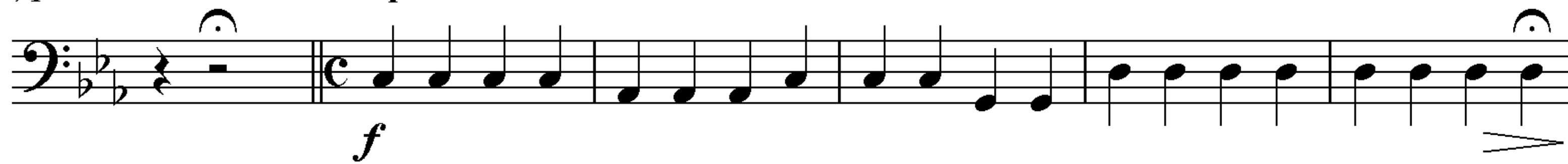


V.S.

65

**molto rit.***p*

71

**Tempo I.** ♩=60*f*

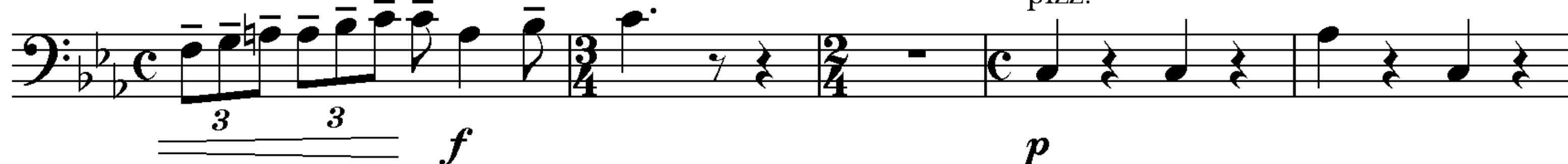
77

**a tempo***mp*

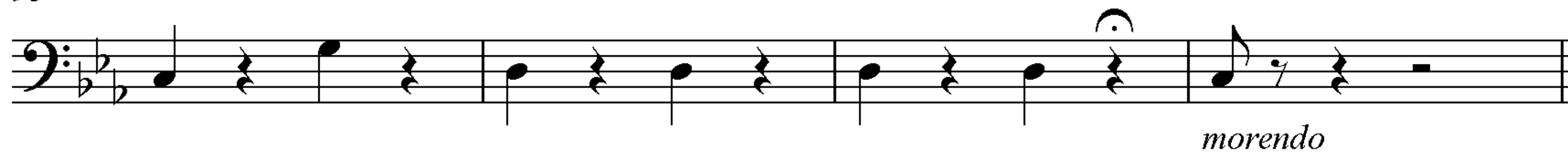
83

*mf*

88

**rit. a tempo** ♩=60 *pizz.**f**p*

93

*morendo*