

31^a/1/2

Neuf basses dances deux branles

vingt et cinq Bauennes avec quinze Gaillardes en musique a quatre parties le tout nouvellemēt imprime a Paris par Pierre Attaignāt libraire demourāt en la rue de la Harpe au bout de la rue des Mathurins pres leglise saint Cosme.

1530

¶ Le Roy a done priuilege de troyz ans aus Attaignāt apres l'expressiō de chacū liure q'il imprera. Et deffēt a to⁹ libraires/imprimeurs & aultres q'ls nayēt a imprimer & vendre lesd liures plez Attaignāt imprimes ne aucune partie d'iceulx sur peine de cōfiscatiō & d'amēde arbitraire.

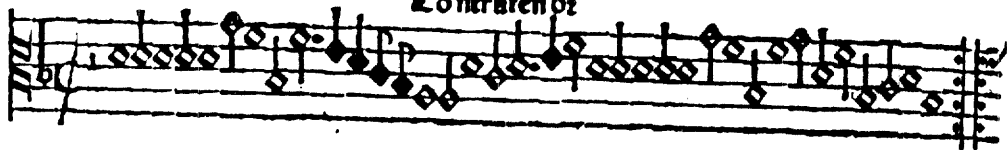
Contratenor.

¶ r r l

16.

Contratenor

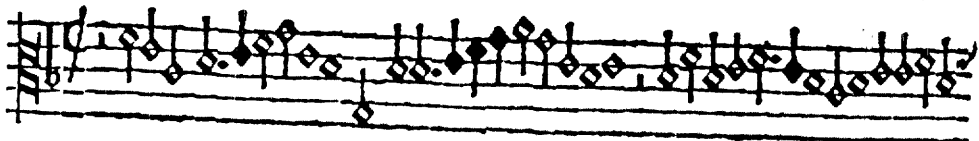
1



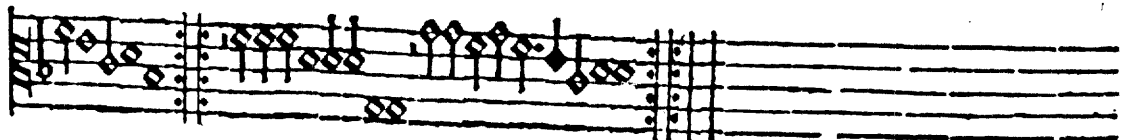
Basse dance



2



Basse dance



3 *Contratenor* **ff**

A musical staff for Contratenor, measure 3. The staff contains a series of notes, mostly eighth and sixteenth notes, with a dynamic marking of **ff** (fortissimo) at the end of the staff.

Basse dance

A musical staff for Basse dance, measure 3. The staff contains a series of notes, mostly eighth and sixteenth notes, with a dynamic marking of **ff** at the end of the staff.

4

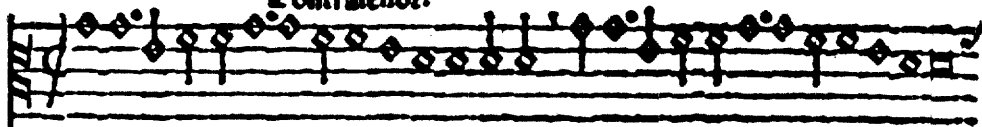
A musical staff for Contratenor, measure 4. The staff contains a series of notes, mostly eighth and sixteenth notes, with a dynamic marking of **ff** at the end of the staff.

La gata en italien

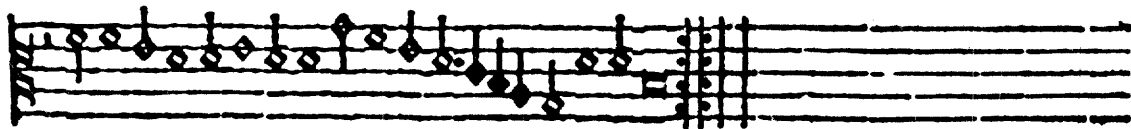
Basse dance

A musical staff for Basse dance, measure 4. The staff contains a series of notes, mostly eighth and sixteenth notes, with a dynamic marking of **ff** at the end of the staff.

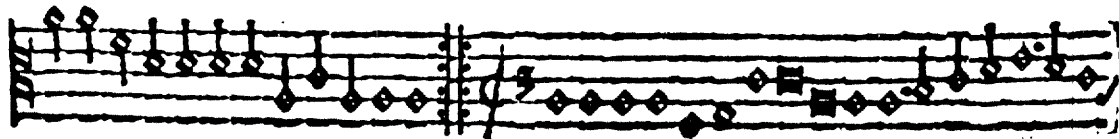
Contratenor.



La scarpe my faict mal. Basse dance

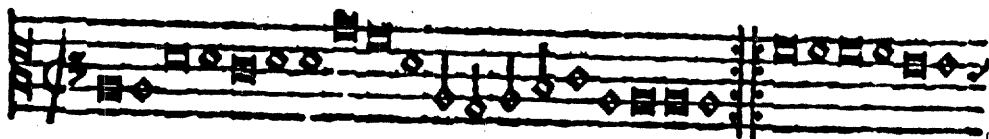
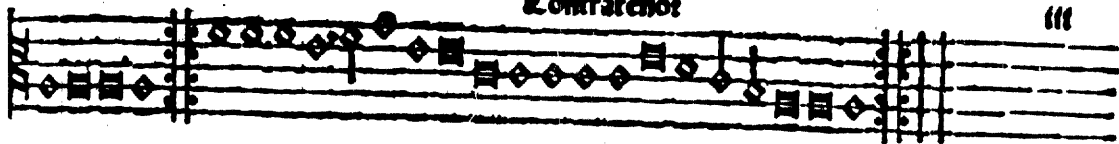


La magdalena Basse dance

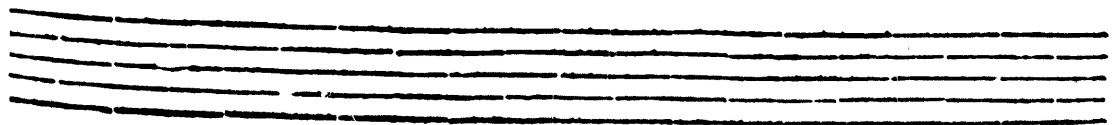
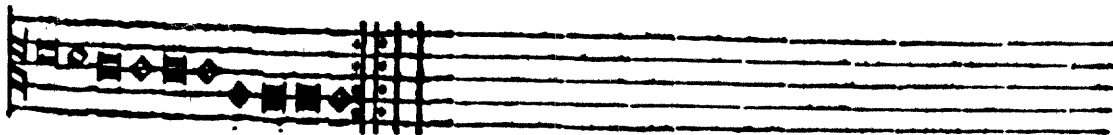


Contrateno:

111

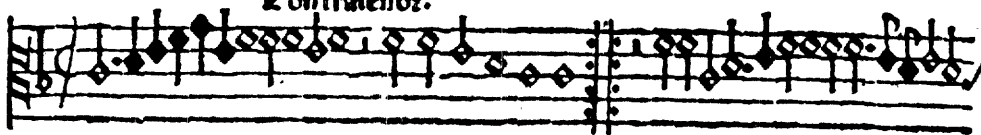


Tourdon

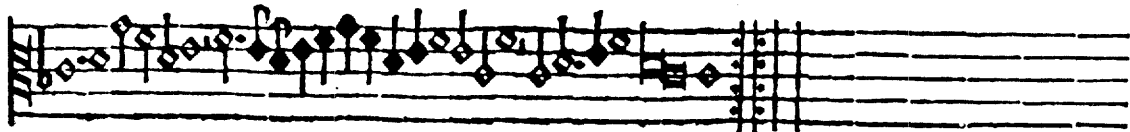


Contratenor.

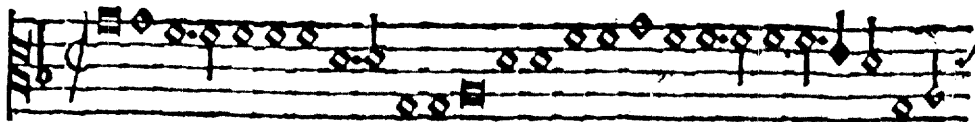
3



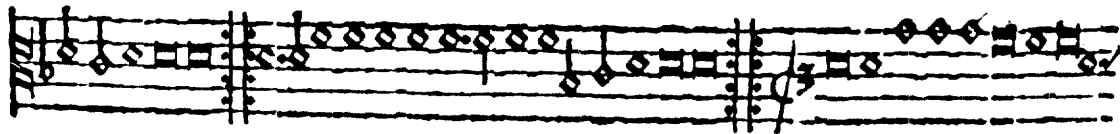
Basse dance



6



La brosse Basse dance



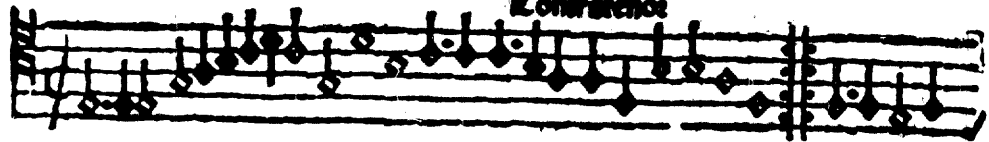
Contratenor

fff

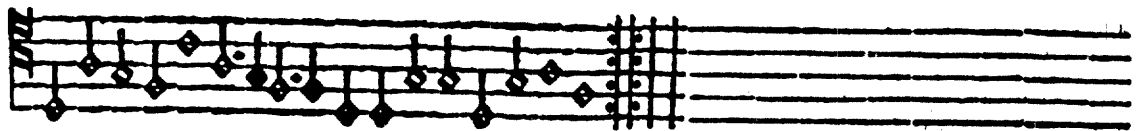
Contratenor

17.

1



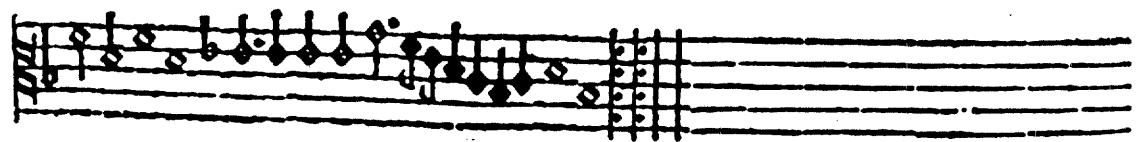
Branle



2

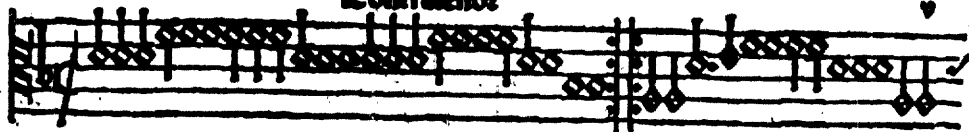


Branle



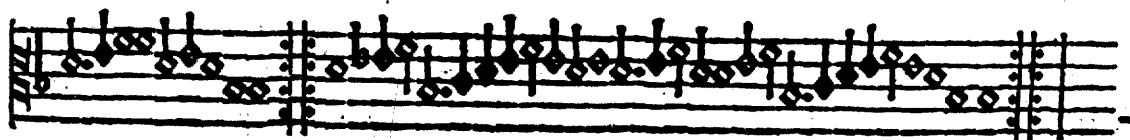
Contratenor

1

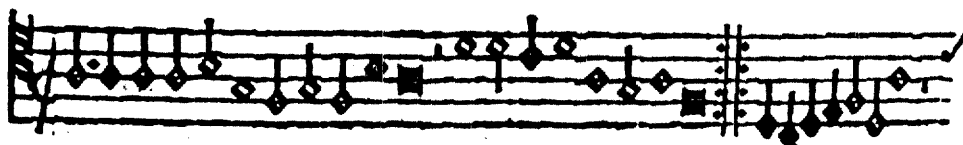


18

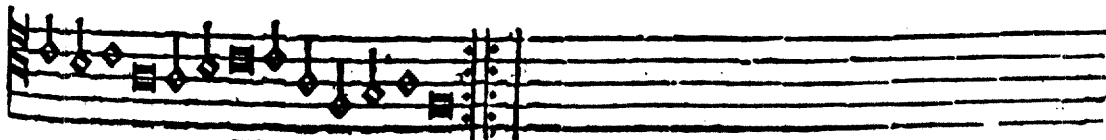
Baume



2



Baume



3

L'erratenoz

Musical notation for the piece 'L'erratenoz'. It consists of a single staff with a treble clef and a key signature of one flat. The melody is written in a style that uses diamond-shaped note heads. The piece begins with a treble clef and a key signature of one flat. The melody is written in a style that uses diamond-shaped note heads. The piece is marked with a '3' on the left side.

Daunen

Musical notation for the piece 'Daunen'. It consists of a single staff with a treble clef and a key signature of one flat. The melody is written in a style that uses diamond-shaped note heads. The piece begins with a treble clef and a key signature of one flat. The melody is written in a style that uses diamond-shaped note heads.

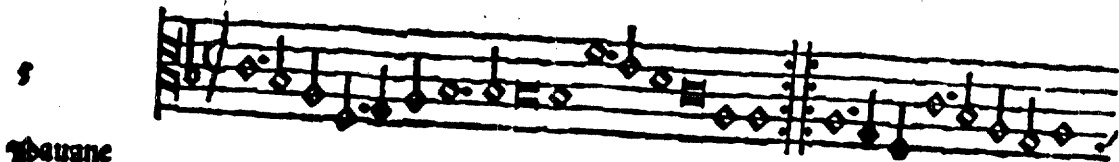
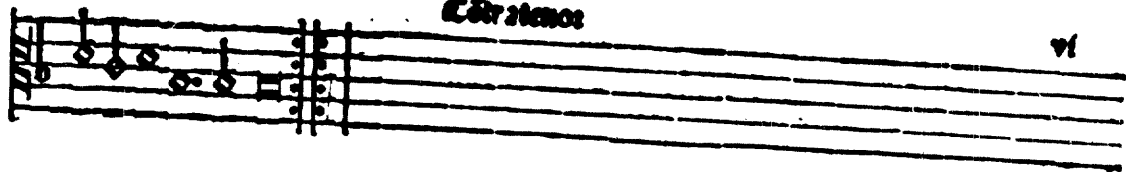
4

Daunne

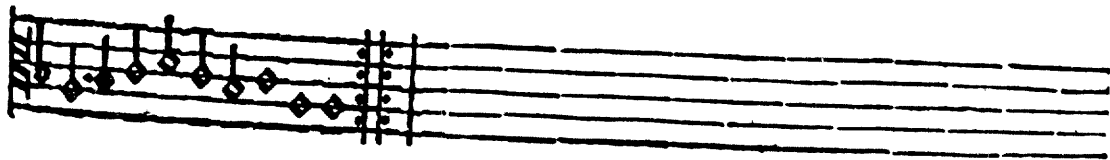
Musical notation for the piece 'Daunne'. It consists of a single staff with a treble clef and a key signature of one flat. The melody is written in a style that uses diamond-shaped note heads. The piece begins with a treble clef and a key signature of one flat. The melody is written in a style that uses diamond-shaped note heads.

Cárstenos

vi

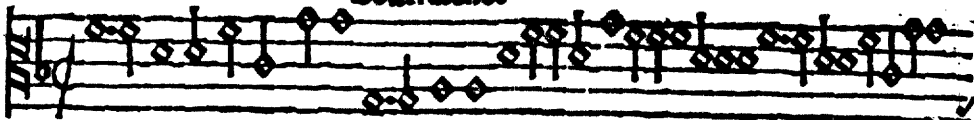


baucane



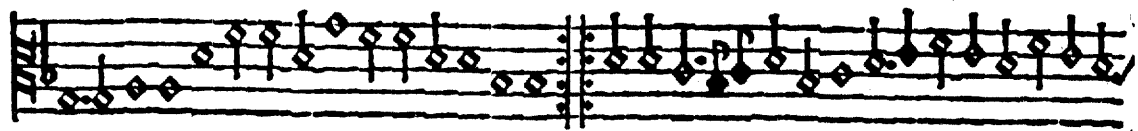
6

Contratenor

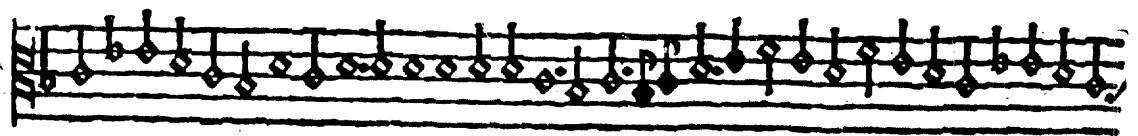


A single musical staff for the Contratenor part. It begins with a treble clef and a common time signature. The notation consists of a series of diamond-shaped notes, some with stems, and rests, arranged in a melodic line across the staff.

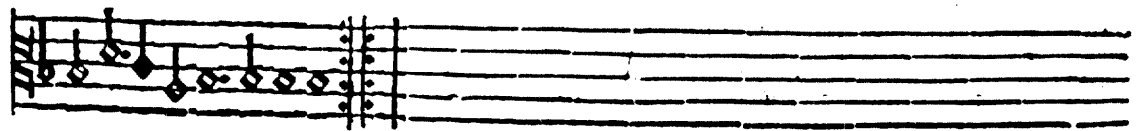
Baume



The first musical staff for the Baume part. It starts with a treble clef and a common time signature. The notation features diamond-shaped notes with stems, some beamed together, and rests, forming a melodic sequence.



The second musical staff for the Baume part, continuing the melodic line with diamond-shaped notes and stems.

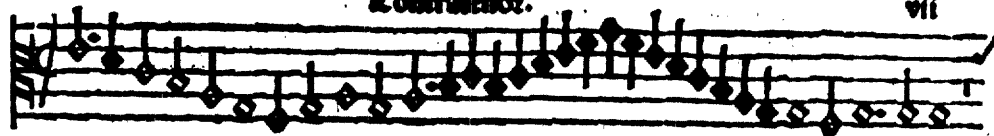


The third musical staff for the Baume part, showing the continuation of the melody with diamond-shaped notes and stems.

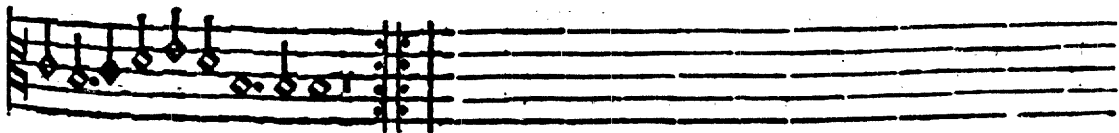
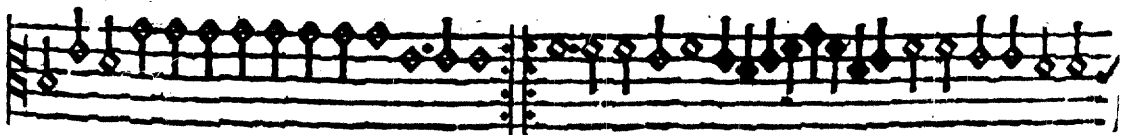
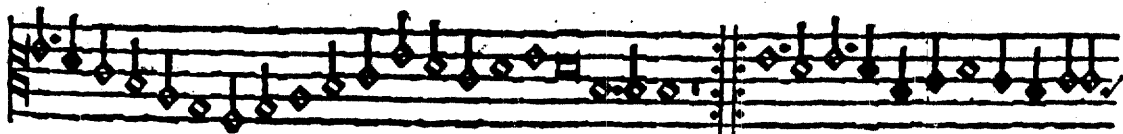
Contratenor.

vii

7



Baſſe

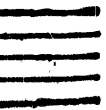
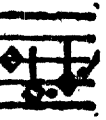
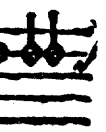


8 *Contratenor*

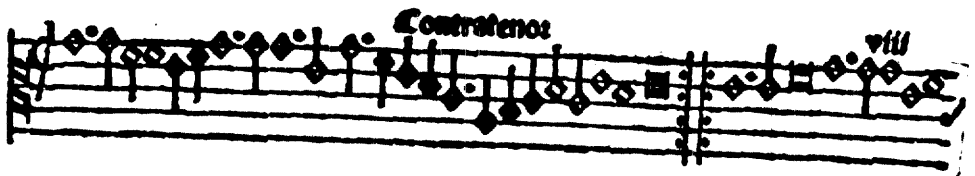
Soprano

9

Quinto

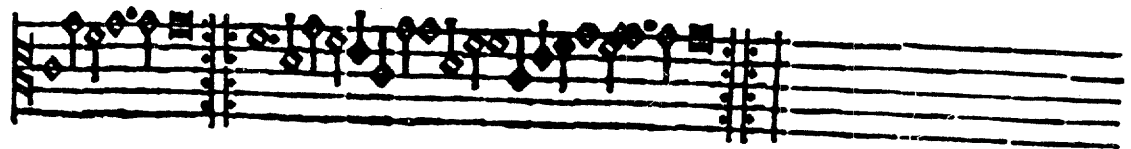


10



19

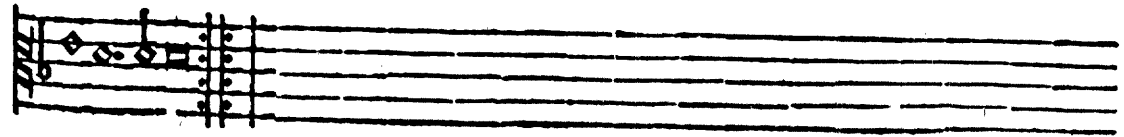
Paucne



11



Paucne



12

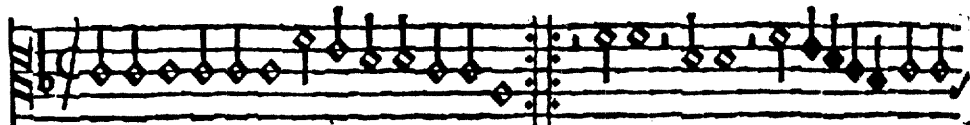
Contratenor



Musical notation for the Contratenor part, measures 12-13. The staff is a single five-line staff with a treble clef. The music consists of a sequence of notes with stems pointing downwards, interspersed with rests. The notes are mostly quarter notes and half notes. There are some accidentals, including a sharp sign above a note in measure 12 and a flat sign below a note in measure 13. The notation is in a medieval or early modern style.

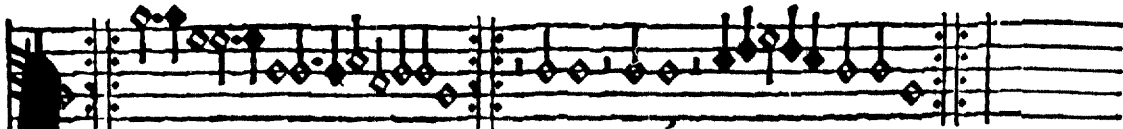
Vouenne

13

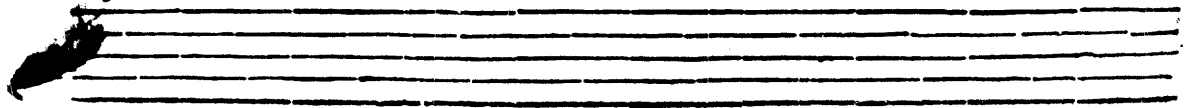


Musical notation for the Vouenne part, measures 12-13. The staff is a single five-line staff with a treble clef. The music consists of a sequence of notes with stems pointing downwards, interspersed with rests. The notes are mostly quarter notes and half notes. There are some accidentals, including a sharp sign above a note in measure 12 and a flat sign below a note in measure 13. The notation is in a medieval or early modern style.

Vouane.



Musical notation for the Vouane part, measures 12-13. The staff is a single five-line staff with a treble clef. The music consists of a sequence of notes with stems pointing downwards, interspersed with rests. The notes are mostly quarter notes and half notes. There are some accidentals, including a sharp sign above a note in measure 12 and a flat sign below a note in measure 13. The notation is in a medieval or early modern style.



Two empty musical staves, one above the other, consisting of five lines each. They are completely blank.

14

Contre-tenor

Musical notation for the Contre-tenor part, measure 14. The staff shows a melodic line with diamond-shaped notes and a bass line with block chords. A dynamic marking 'fz' is present at the end of the measure.

Batterie

Musical notation for the Batterie part, measure 14. The staff shows a rhythmic accompaniment with diamond-shaped notes and block chords.

15

Musical notation for the Contre-tenor part, measure 15. The staff shows a melodic line with diamond-shaped notes and a bass line with block chords.

Batterie

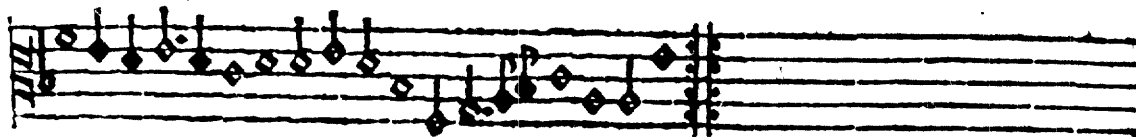
Musical notation for the Batterie part, measure 15. The staff shows a rhythmic accompaniment with diamond-shaped notes and block chords.

16

Contratenos



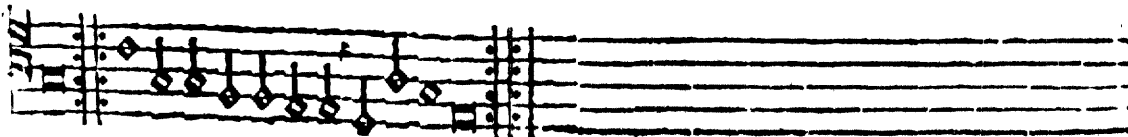
Pause



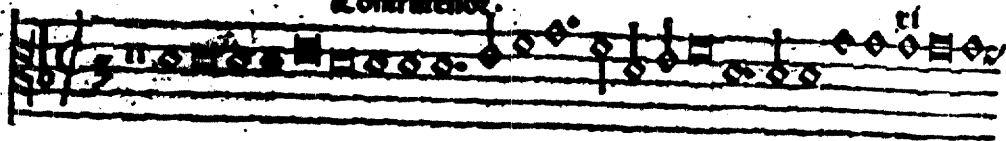
17



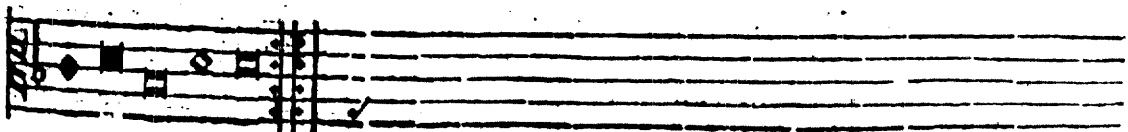
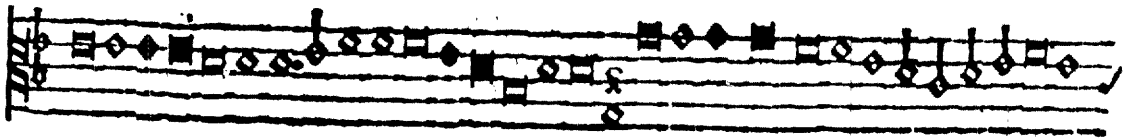
Pause



Contratenor.

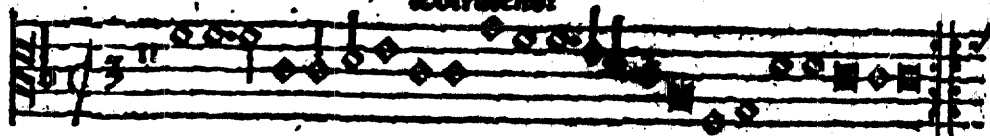


Sallarde

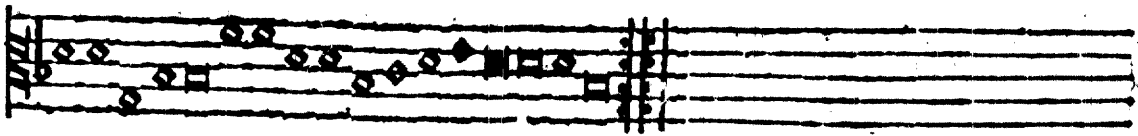
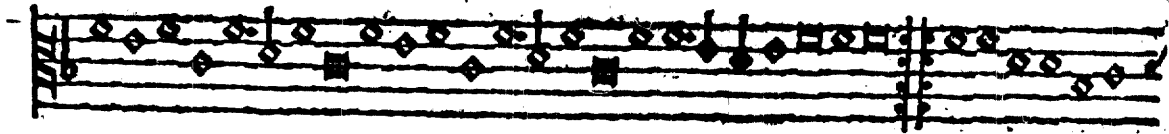


e

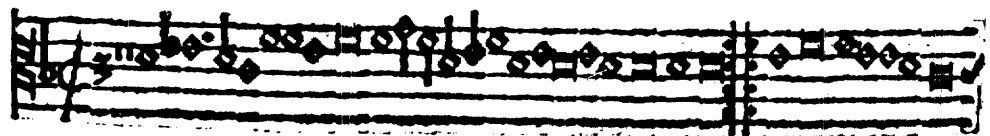
Contratenor



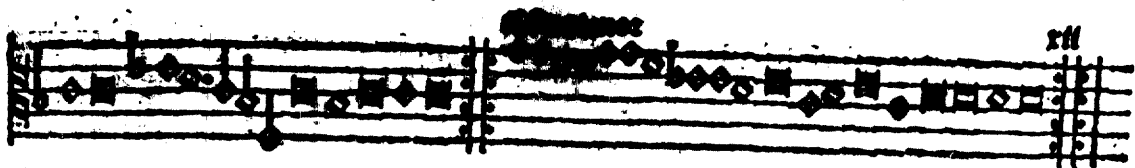
Saillarde



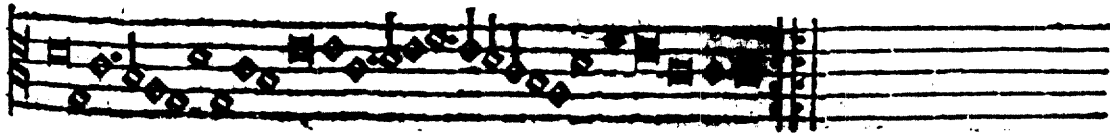
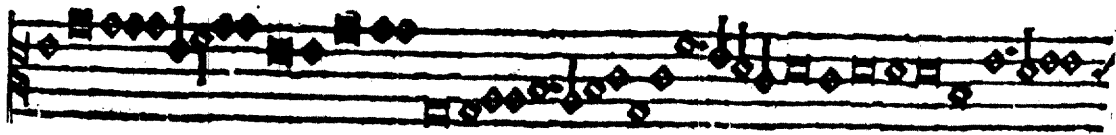
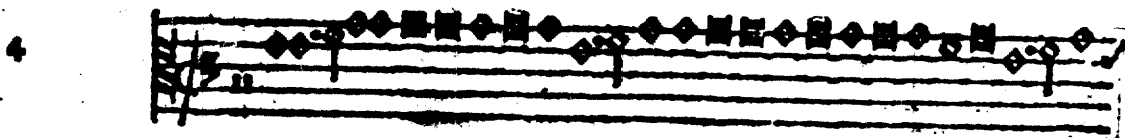
3



Saillarde

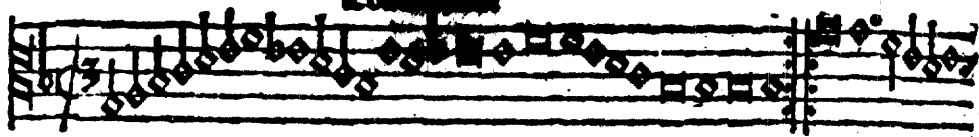


Saillarde



Conte

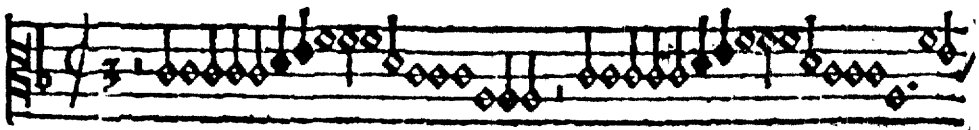
5



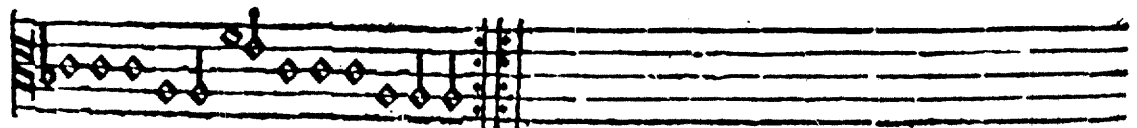
Saillarde

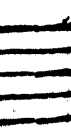
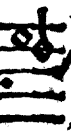
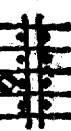
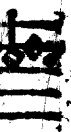


6



Saillarde





7

Contratenor

rvl XIII

A musical staff for the Contratenor part. It features a treble clef and a key signature of one flat. The staff contains a series of notes, many of which are decorated with diamond-shaped ornaments. The staff is divided into measures by vertical bar lines. The text 'Contratenor' is written above the staff, and 'rvl XIII' is written at the end.

Sallarde

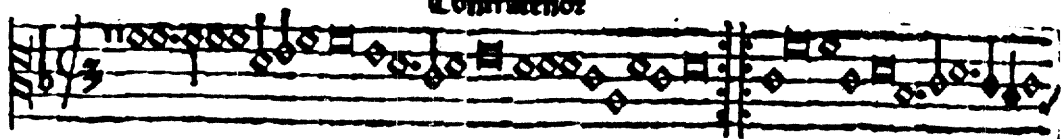
A musical staff for the Sallarde part. It features a treble clef and a key signature of one flat. The staff contains a series of notes, many of which are decorated with diamond-shaped ornaments. The staff is divided into measures by vertical bar lines.

A musical staff for the Sallarde part. It features a treble clef and a key signature of one flat. The staff contains a series of notes, many of which are decorated with diamond-shaped ornaments. The staff is divided into measures by vertical bar lines.

Sallarde

A musical staff for the Sallarde part. It features a treble clef and a key signature of one flat. The staff contains a series of notes, many of which are decorated with diamond-shaped ornaments. The staff is divided into measures by vertical bar lines.

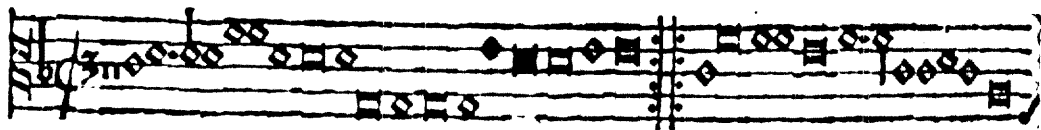
Contratenor



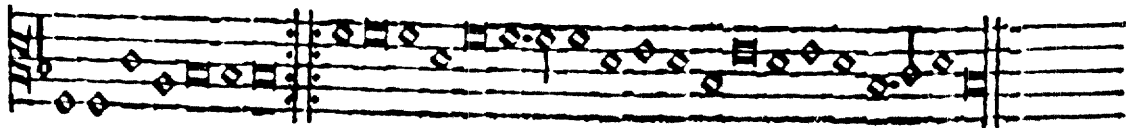
Baillarde



10



Baillarde



18

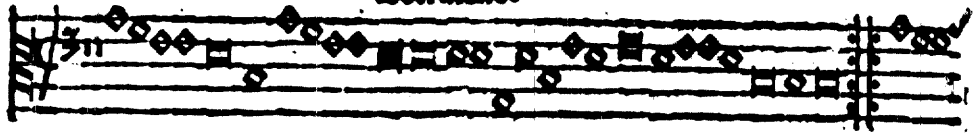
Strateno:

trill

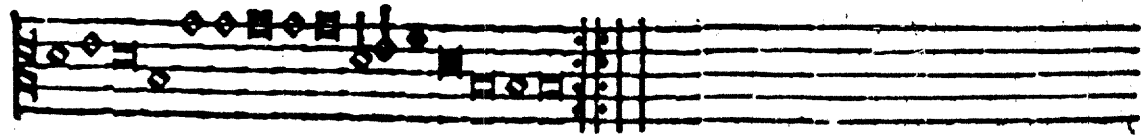
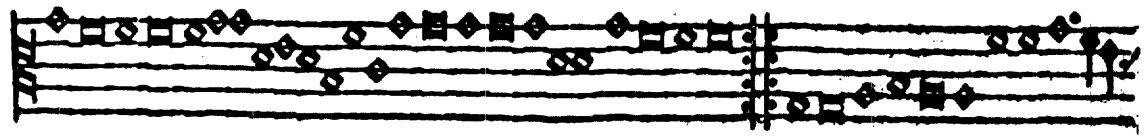
Saillarde

L'écrotinos

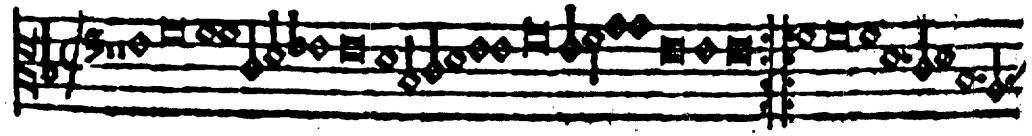
12



Saillarde



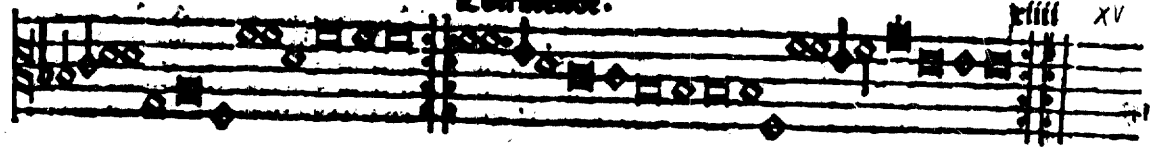
13



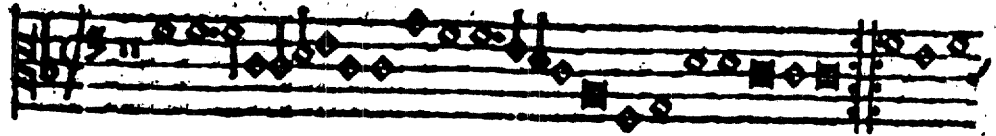
Saillarde

Grave.

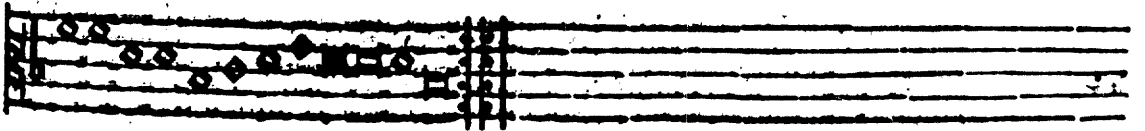
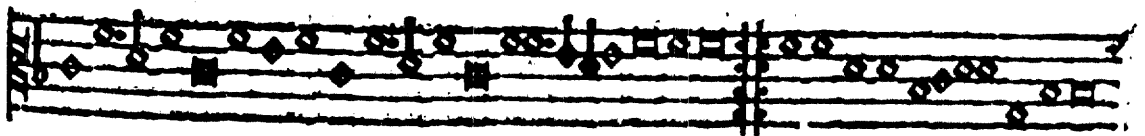
XV



14

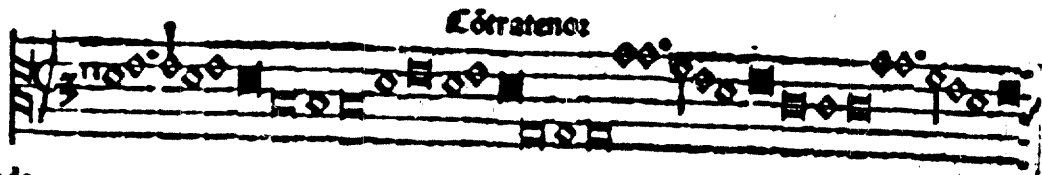


Sallarde

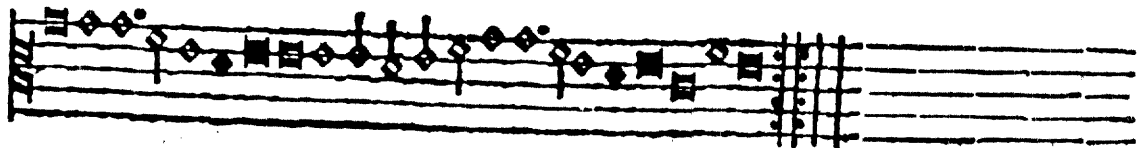
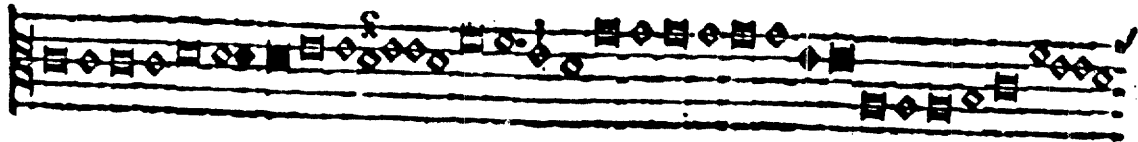


XVI

15

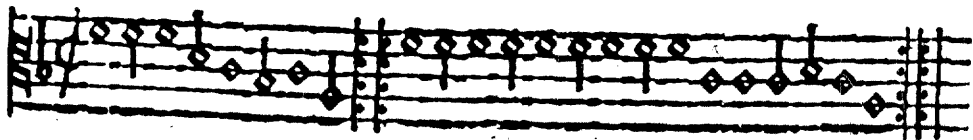


Baillarde



20

Buena



21

Contratenor

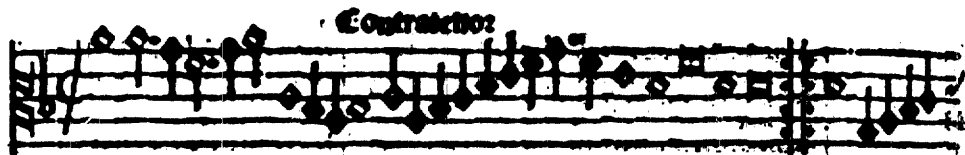
21
Bauſne

22

22
Bauſne

23
Bauſne

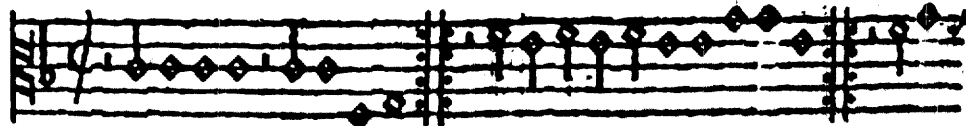
24.



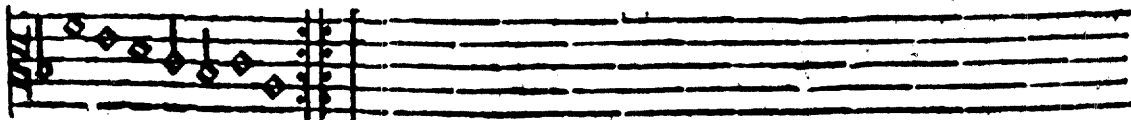
Baùne



25



Baùne La rote de rode



Al fine.