

Markus-Passion

1

Parte prima
1. Sonata (Chor)

Viola 2 (tenore)
Adagio

zugeschrieben:
Reinhard Keiser (1674-1739)

Musical score for Viola 2 (tenore) in Adagio tempo, measures 1-31. The score is written in 2/4 time with a key signature of one flat (B-flat). The notation includes various musical symbols such as notes, rests, and accidentals. Measure numbers 6, 12, 17, 22, 28, and 32 are indicated at the start of their respective staves.

2. Recitativo

Musical score for Viola 2 (tenore) in Recitativo tempo, measures 32-41. The score is written in 2/4 time with a key signature of one flat (B-flat). The notation includes various musical symbols such as notes, rests, and accidentals. Measure numbers 4, 9, 16, and 24 are indicated at the start of their respective staves.

3. Aria: tacet

4. Recitativo

Adagio

4

8

6

Musical notation for measures 4 and 8 of the Recitativo section. The notation is in 2/4 time with a key signature of one sharp (F#). Measure 4 contains a whole note chord (F#4, A4, C5) followed by a half note (F#4). Measure 8 contains a whole note (F#4), a half note (A4), a quarter note (C5), and a half note (F#4). The notation is in 2/4 time with a key signature of one sharp (F#).

5. Choral

5

8

11

15

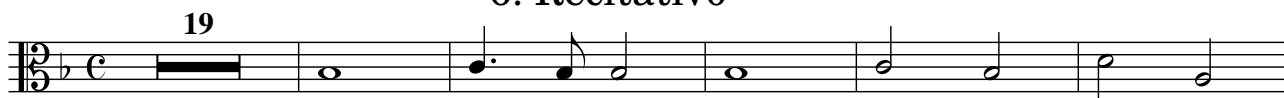
19

23

25

Musical notation for measures 5 through 25 of the Choral section. The notation is in 2/4 time with a key signature of one sharp (F#). Measures 5-8 show a melodic line with eighth and quarter notes. Measures 9-12 show a melodic line with eighth and quarter notes. Measures 13-16 show a melodic line with eighth and quarter notes. Measures 17-20 show a melodic line with eighth and quarter notes. Measures 21-24 show a melodic line with eighth and quarter notes. Measure 25 shows a melodic line with eighth and quarter notes.

6. Recitativo



25



7. Recitativo: tacet

8. Aria: tacet

9. Recitativo



10. Recitativo: tacet

11. Chor



5



12. Recitativo



13. Chor



14. Recitativo: tacet

15. Chor



6



16. Recitativo: tacet

17. Aria: tacet

18. Sinfonia

Adagio

Allegro

Adagio

Allegro



5

Adagio



19. Recitativo: tacet

20. Aria: tacet

21. Recitativo: tacet

22. Chor/ Recitativo/ Chor

Presto



4

Presto



23. Choral



8



Parte seconda
24. Sinfonia

Largo

7

14

19

3

The musical score for the beginning of the 24th Symphony is written in G major (one sharp) and 3/4 time. It consists of four staves of music. The first staff starts with a treble clef and a key signature of one sharp. The tempo is marked 'Largo'. The score includes measures 7, 14, and 19. Measure 19 ends with a fermata over a half note G.

25. Recitativo: tacet

26. Chor

Alla breve

9

17

24

30

The musical score for the beginning of the 26th Chorus is written in G major (one sharp) and Alla breve time. It consists of four staves of music. The first staff starts with a treble clef and a key signature of one sharp. The tempo is marked 'Alla breve'. The score includes measures 9, 17, 24, and 30. Measure 30 ends with a fermata over a half note G.

27. Recitativo: tacet

28. Aria

Poco allegro

10

19

26

10

42

29. Recitativo: tacet

30. Aria: tacet

31. Recitativo: tacet

32. Aria: tacet

33. Recitativo: tacet

34. Chor

Allegro

9

13

35. Recitativo: tacet

36. Chor
Allegro

Andante

13

19

37. Recitativo: tacet

38. Aria

Adagio

4

5

39. Recitativo: tacet

40. Chor

Andante

5

6

41. Recitativo: tacet

42. Choral: tacet

43/44. Aria: tacet

45. Sinfonia

Adagio assai

Allegro

Measures 1-16 of the Sinfonia. The score is in 2/4 time, key of B-flat major. Measures 1-8 are marked 'Adagio assai' and measures 9-16 are marked 'Allegro'. The tempo change is indicated by a '5' above the staff at measure 9. The music features a mix of eighth and sixteenth notes, with some triplets and rests.

46. Recitativo: tacet

47. Aria

Adagio

Measures 1-16 of the Aria. The score is in 2/4 time, key of B-flat major. The tempo is marked 'Adagio'. The music features a mix of eighth and sixteenth notes, with some triplets and rests.

48. Recitativo: tacet

49. Choral

Measures 1-9 of the Choral. The score is in 2/4 time, key of B-flat major. The music features a mix of eighth and sixteenth notes, with some triplets and rests.

50. Chor

Alla breve

14 2

24 5 2

40 2

51. Choral

9

17

Presto

52. Chor

8 2

14