

Contrabass

Antonio Vivaldi

©Veress

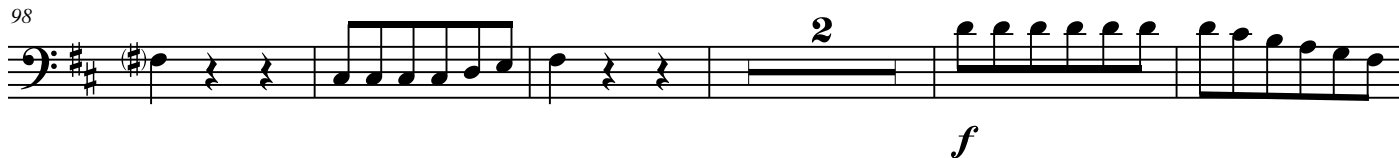
85



91



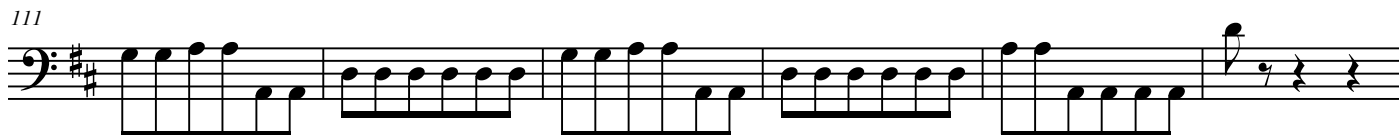
98



105



111



117



Adagio

128



135



Allegro

144



156



165

2 3 6

f *f* *f*

This musical staff contains measures 165 to 180. It begins with a bass clef and a key signature of two sharps (D major). The notation includes eighth and sixteenth notes, rests, and slurs. Above the staff, the numbers 2, 3, and 6 are placed over specific measures. The dynamic *f* (forte) is indicated below the staff at measures 170, 175, and 180.

181

2 10 2

f *f* *f*

This musical staff contains measures 181 to 196. It continues the piece with various note values and rests. Above the staff, the numbers 2, 10, and 2 are placed over specific measures. The dynamic *f* is indicated below the staff at measures 186, 191, and 196.

200

This musical staff contains measures 200 to 207. It features a continuous flow of eighth and sixteenth notes, with some measures containing accidentals (sharps and naturals).

208

4 2

f

This musical staff contains measures 208 to 220. It includes slurs and rests. Above the staff, the numbers 4 and 2 are placed over specific measures. The dynamic *f* is indicated below the staff at measure 215.

221

This musical staff contains measures 221 to 230. It consists of a continuous sequence of eighth and sixteenth notes.

231

f

This musical staff contains measures 231 to 239. It features a mix of eighth and sixteenth notes, with a dynamic *f* indicated below the staff at measure 236.

240

This musical staff contains measures 240 to 248. It continues the melodic line with various note values and rests.

249

This musical staff contains measures 249 to 257. It features a continuous flow of eighth and sixteenth notes.

258

This musical staff contains measures 258 to 262. It concludes the page with a final melodic phrase, ending with a double bar line.