

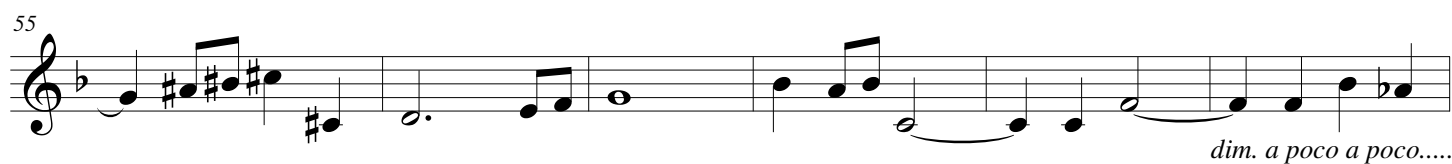
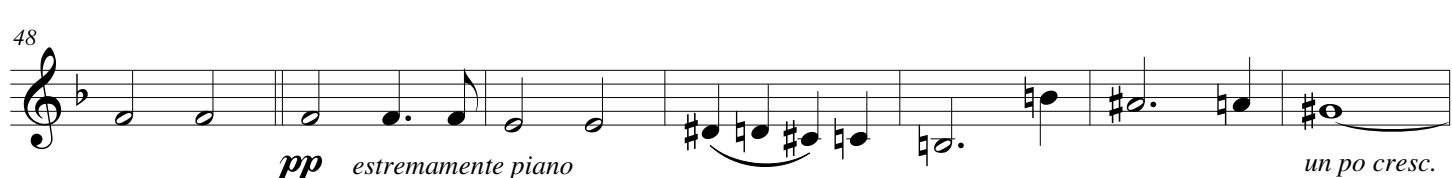
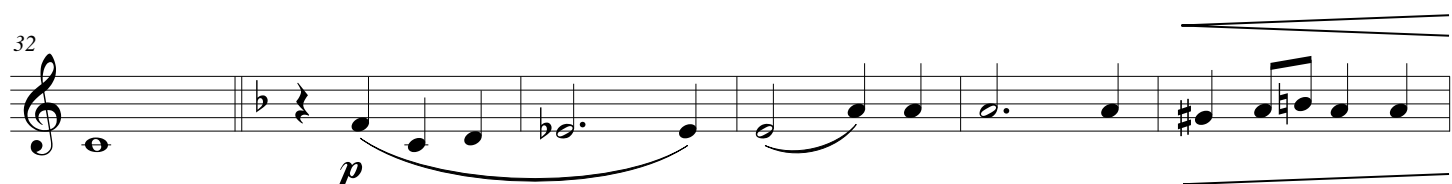
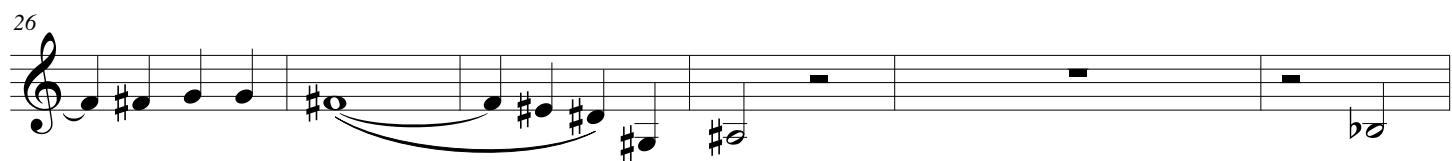
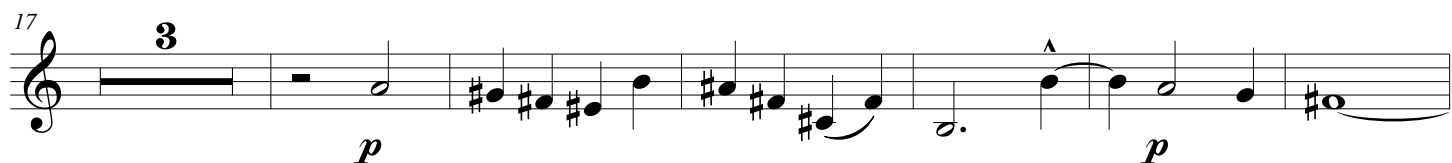
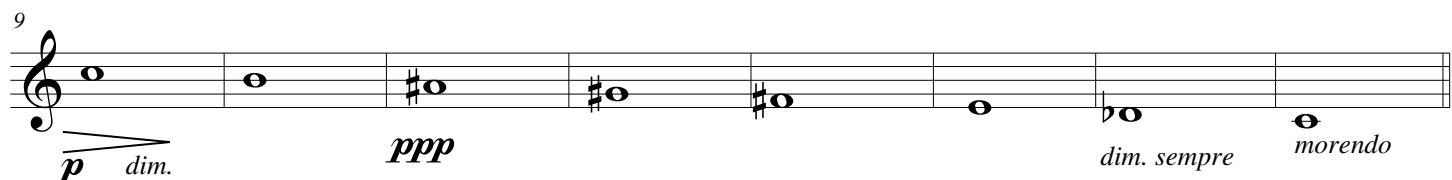
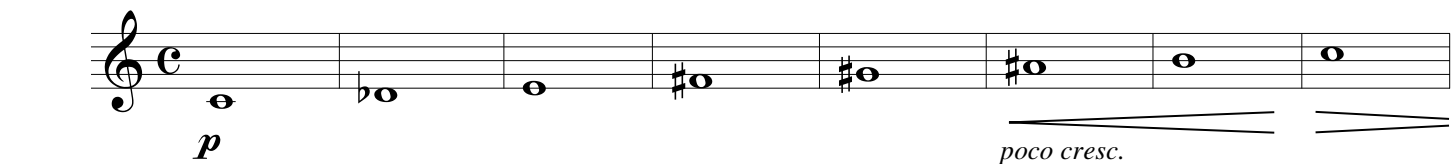
Bass Clarinet

AVE MARIA

SCALA ENIGMATICA

Giuseppe Verdi
Alessandro Scandiffio

Moderato (♩ = 84)



61

68

piorendo

pp

allarg

The image shows a musical score for Giuseppe Verdi's Ave Maria, measures 61-68. The score is written on a single staff in G major (one sharp) and 4/4 time. Measures 61-64 show a melodic line starting on G4, moving stepwise down to B3, with a half note on B3. Measure 65 is a whole rest. Measure 66 has a half note on B3. Measure 67 has a half note on B3, followed by a fermata. Measure 68 has a half note on B3, followed by a fermata. The score includes dynamic markings *piorendo* and *pp*, and a tempo marking *allarg* with a hairpin. The piece ends with a double bar line.