

Violine 1

Sonate in a-moll
für 2 Violinen und Basso continuo

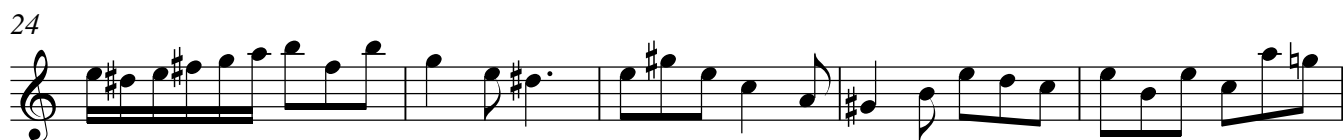
op.5 Nr.4

Gottfried Finger

Measures 1-10 of the first system. The notation is in treble clef with a common time signature (C). The key signature has one flat (B-flat). The melody consists of eighth and sixteenth notes, with some rests and a final whole note in measure 10.

Allegro

Measures 11-25 of the second system. The tempo marking 'Allegro' is placed above the first measure. The notation continues with eighth and sixteenth notes, featuring some triplets and a key change to A minor (two flats) in measure 25.

Adagio**Allegro**

34 **Allegro**

38



42



45



48



52



57



61



65



67

