

William Brade

Newe ausserlesene
Paduanen und Galliarden
auff allen musicalischen Instrumenten
und insonderheit auff Fiolen
lieblich zu gebrauchen
(mit 6 Stimmen)

Hamburg, 1614

Contents

1. Paduana	3
1. Galliard	3
2. Paduana	3
3. Galliard	4
4. Paduana	4
5. Galliard	5
6. Paduana	5
7. Galliard	6
8. Paduana	6
9. Galliard	7
10. Paduana	7
11. Galliard	8
12. Paduana	8
13. Galliard	8
14. Paduana	9
15. Galliard	9
16. Paduana	10
17. Galliard	10
18. Paduana	11
19. Galliard	12
20. Paduana	12
21. Galliard	13
22. Paduana	13
23. Galliard	14
24. Paduana	14
25. Galliard	15
26. Paduana	15
27. Galliard	16
28. Paduana	16
29. Galliard	17
30. Paduana	17
31. Galliard	18
32. Paduana	18
33. Galliard	19
34. Paduana	19
35. Allmandi	20

1. Paduana

1. Paduana, Basso part. The score is written in bass clef with a key signature of one flat (B-flat). It consists of five staves of music. The first staff begins with a treble clef and a common time signature, followed by a bass clef. The music is in 3/4 time. The first staff has a measure rest, followed by a half note, a quarter note, and a half note. The second staff has a half note, a quarter note, and a half note. The third staff has a half note, a quarter note, and a half note. The fourth staff has a half note, a quarter note, and a half note. The fifth staff has a half note, a quarter note, and a half note. The score includes measure numbers 5, 10, 15, 20, and 25.

1. Galliard

1. Galliard, Basso part. The score is written in bass clef with a key signature of one flat (B-flat). It consists of three staves of music. The first staff begins with a treble clef and a common time signature, followed by a bass clef. The music is in 3/4 time. The first staff has a measure rest, followed by a half note, a quarter note, and a half note. The second staff has a half note, a quarter note, and a half note. The third staff has a half note, a quarter note, and a half note. The score includes measure numbers 5, 10, and 15.

2. Paduana

2. Paduana, Basso part. The score is written in bass clef with a key signature of one flat (B-flat). It consists of five staves of music. The first staff begins with a treble clef and a common time signature, followed by a bass clef. The music is in 3/4 time. The first staff has a measure rest, followed by a half note, a quarter note, and a half note. The second staff has a half note, a quarter note, and a half note. The third staff has a half note, a quarter note, and a half note. The fourth staff has a half note, a quarter note, and a half note. The fifth staff has a half note, a quarter note, and a half note. The score includes measure numbers 5, 10, 15, 20, and 25.

3. Galliard

5

10

1.

2.

15

20

25

30

35

4. Paduana

5

10

15

20

5. Galliard

5

10

15

20

The musical score for the Galliard, Basso part, consists of five staves of music in 3/2 time. The key signature has one flat (B-flat). The first staff contains measures 1-5, the second staff measures 6-10, the third staff measures 11-15, the fourth staff measures 16-20, and the fifth staff contains measures 21-25. The piece ends with a double bar line and repeat dots.

6. Paduana

5

10

15

20

25

The musical score for the Paduana, Basso part, consists of five staves of music in 3/2 time. The key signature has one flat (B-flat). The first staff contains measures 1-5, the second staff measures 6-10, the third staff measures 11-15, the fourth staff measures 16-20, and the fifth staff contains measures 21-25. The piece ends with a double bar line and repeat dots.

7. Galliard

Musical score for the Galliard, Bass part. The piece is in 3/2 time and B-flat major. The notation is as follows:

- Measures 1-4: Quarter notes G2, A2, Bb2, C3.
- Measures 5-8: Quarter notes D3, E3, F3, G3.
- Measures 9-12: Quarter notes A3, Bb3, C4, D4.
- Measures 13-16: Quarter notes E4, F4, G4, A4.
- Measures 17-20: Quarter notes Bb4, C5, Bb4, A4.
- Measures 21-24: Quarter notes G4, F4, E4, D4.
- Measures 25-28: Quarter notes C4, Bb3, A3, G3.
- Measures 29-30: Quarter notes F3, E3, D3, C3.

8. Paduana

Musical score for the Paduana, Bass part. The piece is in 3/4 time and B-flat major. The notation is as follows:

- Measures 1-4: Quarter notes G2, A2, Bb2, C3.
- Measures 5-8: Quarter notes D3, E3, F3, G3.
- Measures 9-12: Quarter notes A3, Bb3, C4, D4.
- Measures 13-16: Quarter notes E4, F4, G4, A4.
- Measures 17-20: Quarter notes Bb4, C5, Bb4, A4.
- Measures 21-24: Quarter notes G4, F4, E4, D4.
- Measures 25-28: Quarter notes C4, Bb3, A3, G3.
- Measures 29-30: Quarter notes F3, E3, D3, C3.

9. Galliard



10. Paduana



11. Galliard

5

10

15

20

25

30

12. Paduana

5

10

15

20

25

13. Galliard

5

10

15

20

25

14. Paduana

5

10

15

20

25

15. Galliard

5

10

15

20

25

16. Paduana

5

10

15

20

25

30

35

40

45

17. Galliard

5

10

15

20

25

30



18. Paduana

1 5 10 15 20 25 30 35 40 45 50 55 60

Two staves of musical notation in bass clef. The first staff contains measures 1 to 10, and the second staff contains measures 11 to 60. The music is written in a simple, rhythmic style with eighth and sixteenth notes. The key signature is one sharp (F#).

19. Galliard

19. Galliard

5

10

15

20

The score for the 19. Galliard is written in bass clef with a 3/2 time signature. It consists of 20 measures. The key signature has one sharp (F#). The melody is written in a single line. The first measure starts with a common time signature (C) and a sharp sign. The piece ends with a double bar line and repeat dots.

20. Paduana

20. Paduana

5

10

15

20

25

30

35

40

45

The score for the 20. Paduana is written in bass clef. It starts with a common time signature (C) and a sharp sign. The time signature changes to 3/2 at measure 5, then to 6/4 at measure 35, and back to 6/4 at measure 40. The key signature has one sharp (F#). The melody is written in a single line. The piece ends with a double bar line and repeat dots.

21. Galliard

21. Galliard

5

10

15

20

25

30

The musical score for the 21. Galliard is written in bass clef with a 3/2 time signature. It consists of 30 measures. The key signature has one sharp (F#). The score is divided into six systems of five measures each. Measure numbers 5, 10, 15, 20, 25, and 30 are indicated at the start of their respective systems. The piece ends with a double bar line and repeat dots.

22. Paduana

22. Paduana

5

10

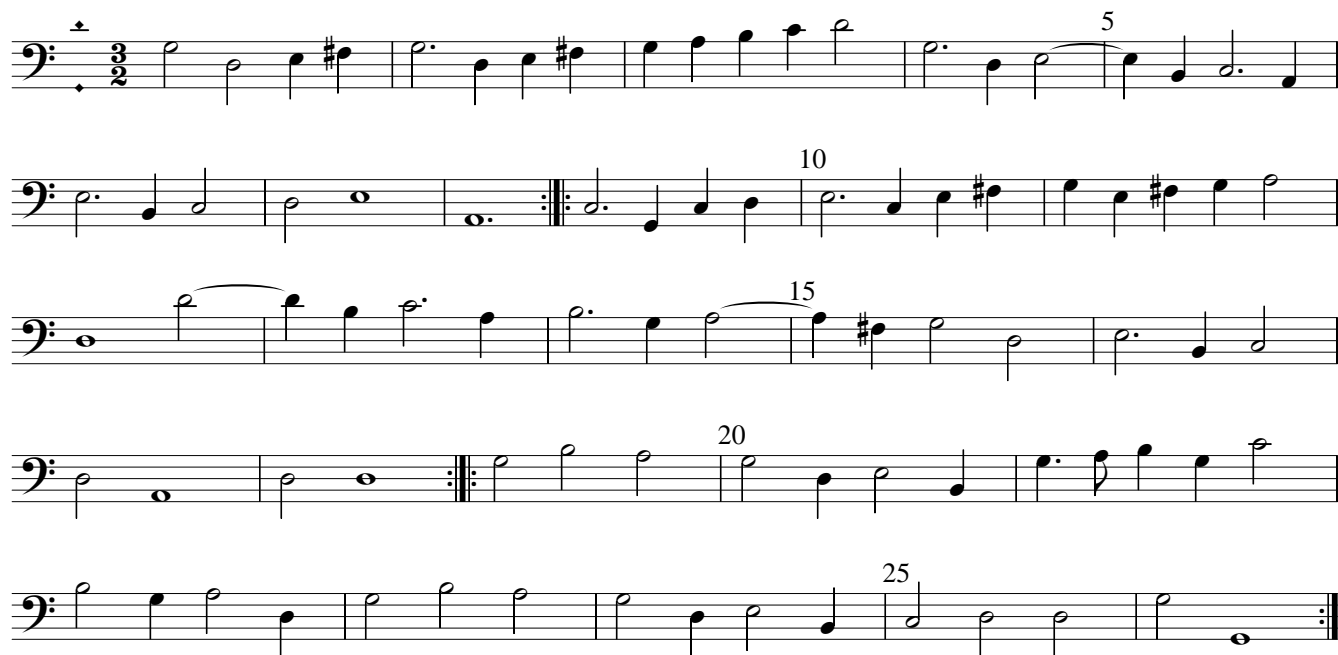
15

20

25

The musical score for the 22. Paduana is written in bass clef with a 3/2 time signature. It consists of 25 measures. The key signature has one sharp (F#). The score is divided into five systems of five measures each. Measure numbers 5, 10, 15, 20, and 25 are indicated at the start of their respective systems. The piece ends with a double bar line and repeat dots.

23. Galliard



24. Paduana



25. Galliard



26. Paduana

26. Paduana

Basso line, 3/2 time signature. The piece consists of 36 measures. The notation includes a key signature of one sharp (F#) and a common time signature (C). The piece is marked with a repeat sign at measure 10 and a double bar line at measure 36. Measure numbers 5, 10, 15, 20, 25, and 30 are indicated above the staff.

27. Galliard



28. Paduana



29. Galliard

29. Galliard

5

10

15

20

25

1.

2.

32

35

40

2

45

1.

2.

Detailed description: This is the musical score for the Basso part of the Galliard. It is written in bass clef with a key signature of one sharp (F#) and a 3/2 time signature. The score consists of seven staves of music. Measure numbers 5, 10, 15, 20, 25, 32, 35, 40, and 45 are indicated above the staves. The piece includes first and second endings, marked with '1.' and '2.' above the staves. The music features a mix of eighth, quarter, and half notes, with some rests and repeat signs.

30. Paduana

30. Paduana

5

10

15

20

25

Detailed description: This is the musical score for the Basso part of the Paduana. It is written in bass clef with a key signature of one sharp (F#) and a 3/2 time signature. The score consists of five staves of music. Measure numbers 5, 10, 15, 20, and 25 are indicated above the staves. The piece includes repeat signs and first/second ending markings. The music features a mix of eighth, quarter, and half notes, with some rests and repeat signs.

31. Galliard

31. Galliard

5

8

1.

2.

15

20

25

30

35

The musical score for 31. Galliard is written in bass clef with a key signature of one sharp (F#) and a 3/2 time signature. The piece consists of 35 measures. The notation includes various note values (half notes, quarter notes, eighth notes, sixteenth notes), rests, and repeat signs. Measure numbers 5, 8, 15, 20, 25, 30, and 35 are indicated above the staff.

32. Paduana

32. Paduana

5

10

15

20

25

The musical score for 32. Paduana is written in bass clef with a key signature of two sharps (F# and C#) and a 3/2 time signature. The piece consists of 25 measures. The notation includes various note values (half notes, quarter notes, eighth notes, sixteenth notes), rests, and repeat signs. Measure numbers 5, 10, 15, 20, and 25 are indicated above the staff.

33. Galliard

33. Galliard

5

10

15

20

25

The score for the Galliard is written in bass clef with a key signature of two sharps (F# and C#) and a 3/2 time signature. It consists of six staves of music. The first staff begins with a repeat sign and a fermata over the first measure. The second staff has a measure rest at the beginning. The third staff begins with a repeat sign. The fourth staff has a repeat sign and a double bar line. The fifth staff continues the melody. The sixth staff ends with a double bar line and repeat signs.

34. Paduana

34. Paduana

5

10

15

20

The score for the Paduana is written in bass clef with a key signature of one sharp (F#) and a 3/4 time signature. It consists of six staves of music. The first staff begins with a repeat sign and a fermata over the first measure. The second staff has a measure rest at the beginning. The third staff begins with a repeat sign. The fourth staff has a repeat sign and a double bar line. The fifth staff continues the melody. The sixth staff ends with a double bar line and repeat signs.

35. Allmandi

5

10

15

20

25

30

35