

Viola

Concierto para Corno N° 2

en Mib

Wolfgang Amadeus Mozart

K. 417

I

Allegro maestoso.

5
 10
 15
 21
 27
 32
 38
 43

p
f *p* *f* *p* *f*
p
f
p
f *p*
f *p*
f

V.S. !!

V.S. !!

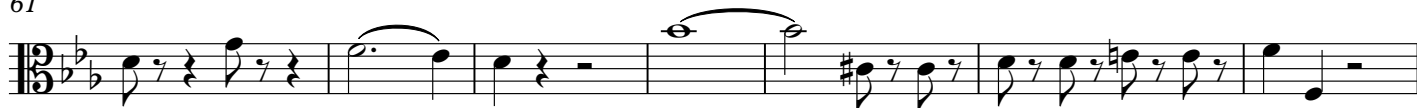
49



54



61



68



74



79



83



86



93



100



108



114



119

119-122

f p f p

Staff 119-122: Four measures of music in 3/8 time, key of B-flat major. Measures 119 and 120 feature eighth-note patterns. Measures 121 and 122 feature sixteenth-note patterns. Dynamics: *f* (119), *p* (120), *f* (121), *p* (122).

123

123-127

f p

Staff 123-127: Five measures of music. Measures 123-124 feature eighth-note patterns. Measures 125-127 feature eighth-note patterns. Dynamics: *f* (123), *p* (125).

128

128-132

f p

Staff 128-132: Five measures of music. Measures 128-129 feature eighth-note patterns. Measures 130-132 feature eighth-note patterns. Dynamics: *f* (128), *p* (130).

133

133-139

f p

Staff 133-139: Seven measures of music. Measures 133-134 feature eighth-note patterns. Measures 135-136 feature eighth-note patterns. Measures 137-139 feature eighth-note patterns. Dynamics: *f* (133), *p* (135).

140

140-145

Staff 140-145: Six measures of music. Measures 140-141 feature eighth-note patterns. Measures 142-143 feature eighth-note patterns. Measures 144-145 feature eighth-note patterns.

146

146-152

Staff 146-152: Seven measures of music. Measures 146-147 feature eighth-note patterns. Measures 148-149 feature eighth-note patterns. Measures 150-152 feature eighth-note patterns.

153

153-160

Staff 153-160: Eight measures of music. Measures 153-154 feature eighth-note patterns. Measures 155-156 feature eighth-note patterns. Measures 157-160 feature eighth-note patterns.

161

161-167

Staff 161-167: Seven measures of music. Measures 161-162 feature eighth-note patterns. Measures 163-164 feature eighth-note patterns. Measures 165-167 feature eighth-note patterns.

168

168-174

Staff 168-174: Seven measures of music. Measures 168-169 feature eighth-note patterns. Measures 170-171 feature eighth-note patterns. Measures 172-174 feature eighth-note patterns.

175

175-180

f p

Staff 175-180: Six measures of music. Measures 175-176 feature eighth-note patterns. Measures 177-178 feature eighth-note patterns. Measures 179-180 feature eighth-note patterns. Dynamics: *f* (177), *p* (179).

181

181-184

cresc. f p f p

Staff 181-184: Four measures of music. Measures 181-182 feature eighth-note patterns. Measures 183-184 feature eighth-note patterns. Dynamics: *cresc.* (181), *f* (183), *p* (184), *f* (185), *p* (186).

185

185-191

f p f

Staff 185-191: Seven measures of music. Measures 185-186 feature eighth-note patterns. Measures 187-188 feature eighth-note patterns. Measures 189-191 feature eighth-note patterns. Dynamics: *f* (185), *p* (186), *f* (189).

II

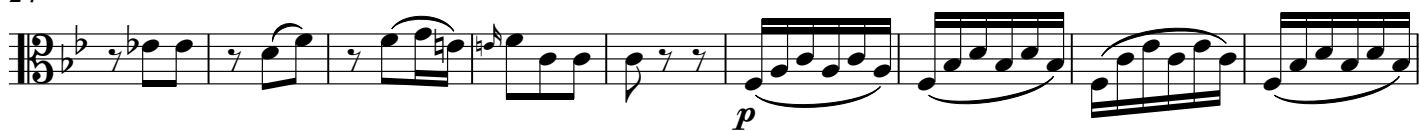
Andante



12



24



33



43



54



63

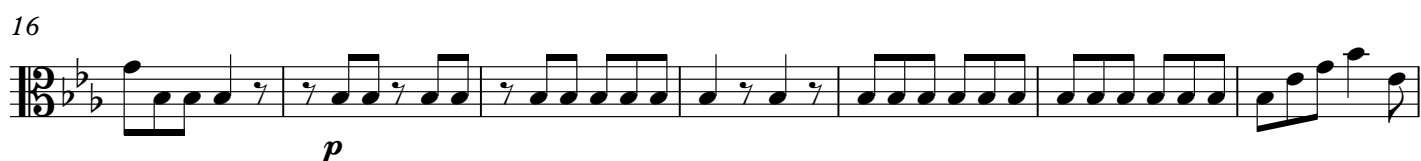


74



III

Rondo



82



90



97



105



113



124



133



142



151

Più Allegro.

159



166

