

# TRUMPET ARIA

(from: Arie 'In meinem Gott bin ich freut', BWV 162.5)

for Trumpet and Organ

Score (04':35")

Johann Sebastian Bach (1685 - 1750)

Arr. Michel Rondeau

Allegretto ♩ = 90



Trumpet in C

C Tpt.

5

Org.

5

C Tpt.

10

Org.

10

C Tpt.

15

Org.

15

# TRUMPET ARIA - BWV 162.5 - Bach - Score

2  
20

C Tpt.

Org.

24

C Tpt.

Org.

29

C Tpt.

Org.

33

C Tpt.

Org.

## TRUMPET ARIA - BWV 162.5 - Bach - Score

3

39

C Tpt.

Org.

45

C Tpt.

Org.

50

C Tpt.

Org.

54

C Tpt.

Org.

# TRUMPET ARIA - BWV 162.5 - Bach - Score

4  
59

C Tpt.

Org.

65

C Tpt.

Org.

70

C Tpt.

Org.

75

C Tpt.

Org.

## TRUMPET ARIA - BWV 162.5 - Bach - Score

5

79

C Tpt.

Org.

84

C Tpt.

Org.

89

C Tpt.

Org.

95

C Tpt.

Org.

# TRUMPET ARIA - BWV 162.5 - Bach - Score

6  
100

C Tpt.

Org.

105

C Tpt.

Org.

109

C Tpt.

Org.

113

C Tpt.

Org.

## TRUMPET ARIA - BWV 162.5 - Bach - Score

7

C Tpt. 117

Org. 117

C Tpt. 121

Org. 121

C Tpt. 126

Org. 126

C Tpt. 131

Org. 131

*Dal Segno*

# TRUMPET ARIA

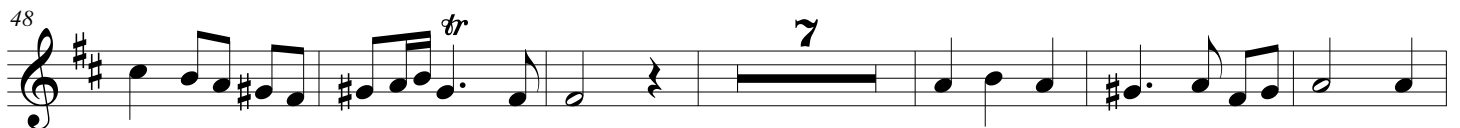
(from: Arie 'In meinem Gott bin ich freut', BWV 162.5)  
for Trumpet and Organ

## Trumpet in B $\flat$

Johann Sebastian Bach (1685 - 1750)

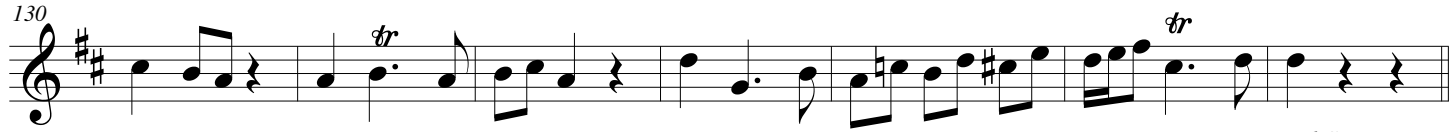
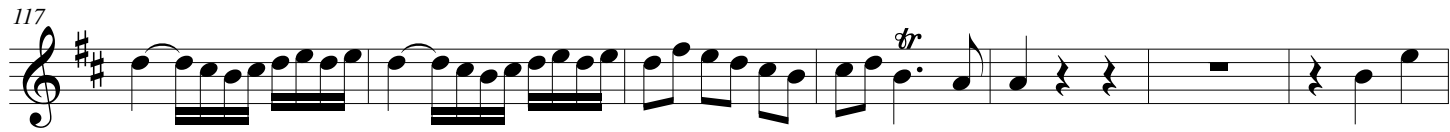
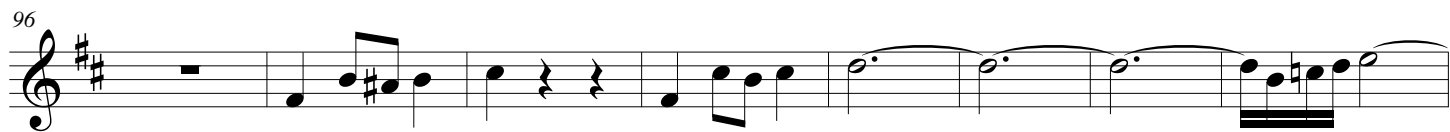
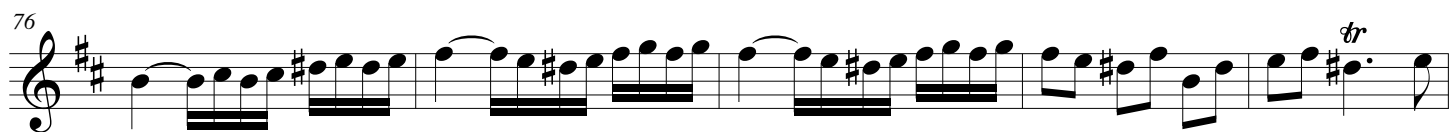
Arr. Michel Rondeau

Allegretto  $\text{♩} = 90$   $\text{S}$





2 TRUMPET ARIA - BWV 162.5 - Bach - B $\flat$  Trumpet



*Dal Segno*

# TRUMPET ARIA

(from: Arie 'In meinem Gott bin ich freut', BWV 162.5)

for Trumpet and Organ

## Trumpet in C

Johann Sebastian Bach (1685 - 1750)

Arr. Michel Rondeau

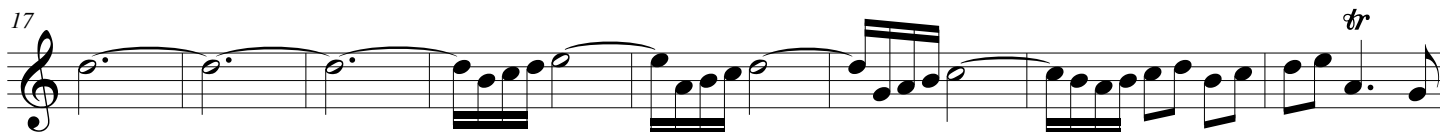
Allegretto ♩ = 90



11



17



25



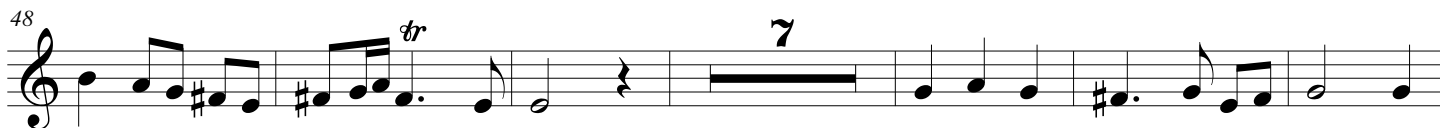
31



38



48



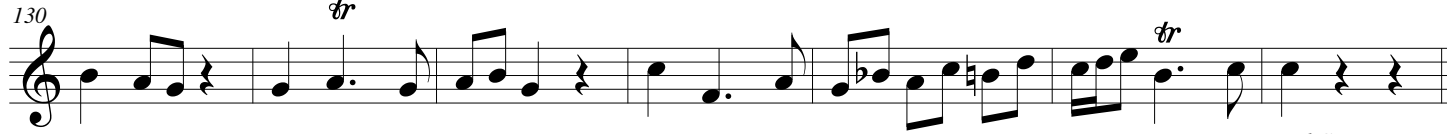
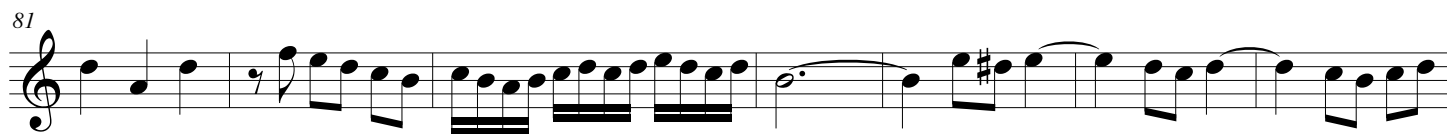
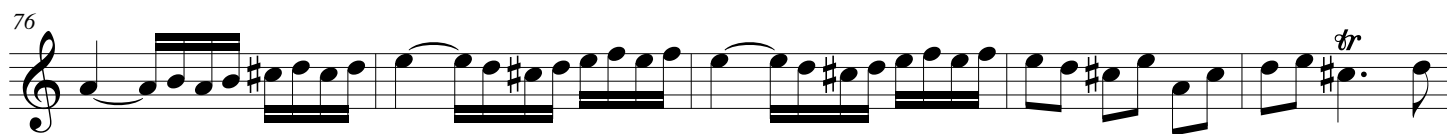
61



69



2 TRUMPET ARIA - BWV 162.5 - Bach - C Trumpet



*Dal Segno*

# TRUMPET ARIA

(from: Arie 'In meinem Gott bin ich freut', BWV 162.5)

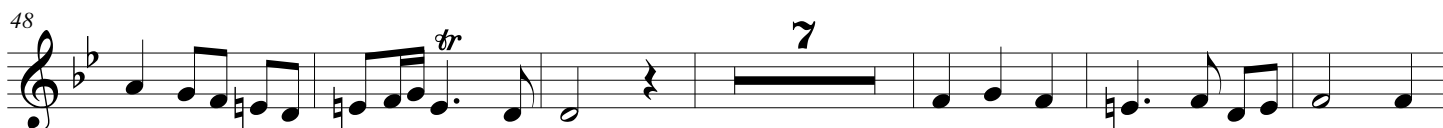
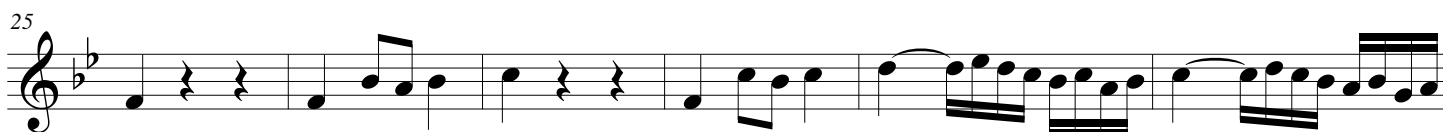
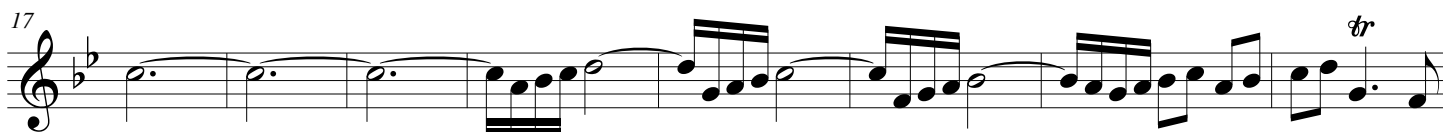
for Trumpet and Organ

## Trumpet in D

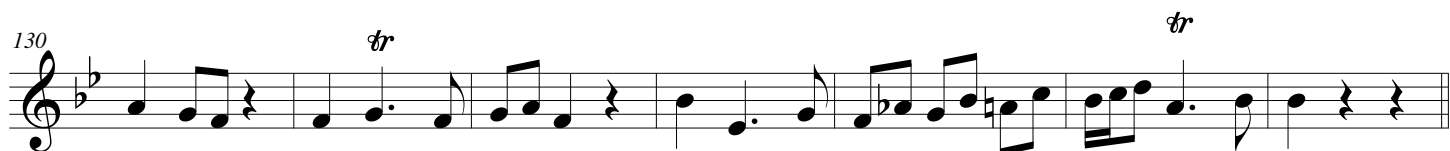
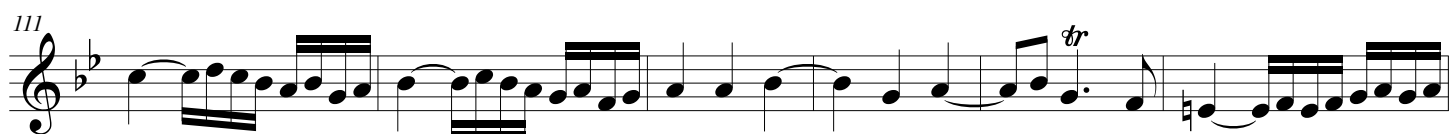
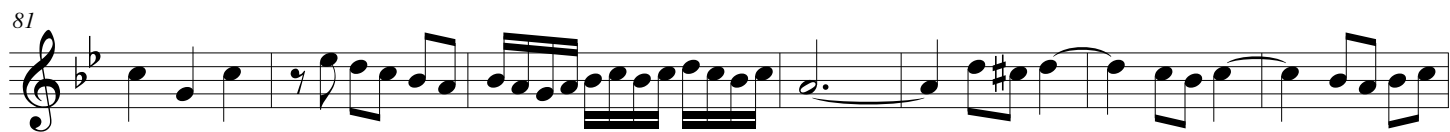
Johann Sebastian Bach (1685 - 1750)

Arr. Michel Rondeau

Allegretto ♩ = 90



2 TRUMPET ARIA - BWV 162.5 - Bach - D Trumpet



*Dal Segno*

# TRUMPET ARIA

(from: Arie 'In meinem Gott bin ich freut', BWV 162.5)  
for Trumpet and Organ

Johann Sebastian Bach (1685 - 1750)

Arr. Michel Rondeau

## Organ

Trumpet in C

Allegretto ♩ = 90

C Tpt.

C Tpt.

C Tpt.

# TRUMPET ARIA - BWV 162.5 - Bach - Organ

2  
20

C Tpt.

Org.

This system contains measures 2 through 23. The Trumpet part (C Tpt.) is written on a single staff with a treble clef, featuring a melodic line with many beamed sixteenth notes. The Organ part (Org.) is written on a grand staff (treble and bass clefs), providing harmonic support with chords and moving lines in both hands.

24

C Tpt.

Org.

This system contains measures 24 through 28. In measure 24, the Trumpet part has a trill (tr) on the first note. The Organ part continues with its accompaniment, including some sustained chords in the right hand.

29

C Tpt.

Org.

This system contains measures 29 through 32. The Trumpet part continues its melodic line. The Organ part features a more active bass line with frequent sixteenth-note patterns.

33

C Tpt.

Org.

This system contains measures 33 through 36. Measure 33 includes a trill (tr) in the Trumpet part. The Organ part concludes the system with a final melodic phrase in the right hand and a sustained bass note.

## TRUMPET ARIA - BWV 162.5 - Bach - Organ

3

C Tpt.

Org.

39

39

C Tpt.

Org.

45

45

C Tpt.

Org.

50

50

C Tpt.

Org.

54

54



# TRUMPET ARIA - BWV 162.5 - Bach - Organ

4

C Tpt.

Org.

Measures 4-9 of the Trumpet ARIA. The Trumpet part (C Tpt.) is a single melodic line. The Organ part (Org.) consists of two staves, Treble and Bass, with a complex accompaniment of chords and moving lines.

C Tpt.

Org.

Measures 10-14 of the Trumpet ARIA. The Trumpet part (C Tpt.) continues the melodic line. The Organ part (Org.) continues the accompaniment with various chordal textures.

C Tpt.

Org.

Measures 15-19 of the Trumpet ARIA. The Trumpet part (C Tpt.) features a melodic line with a trill in measure 17. The Organ part (Org.) continues the accompaniment.

C Tpt.

Org.

Measures 20-24 of the Trumpet ARIA. The Trumpet part (C Tpt.) features a melodic line with a trill in measure 21. The Organ part (Org.) continues the accompaniment with a more active bass line.

## TRUMPET ARIA - BWV 162.5 - Bach - Organ

5

C Tpt.

Org.

This system contains measures 79 through 83. The C Trumpet part begins with a treble clef and a key signature of one sharp (F#). It features a melodic line with a trill on the second measure and a rapid sixteenth-note scale in the final measure. The Organ part is written for two staves (treble and bass clefs) and provides a harmonic accompaniment with chords and moving lines in both hands.

C Tpt.

Org.

This system contains measures 84 through 88. The C Trumpet part continues the melodic line with a long note in the first measure followed by a descending scale. The Organ part maintains its accompaniment, with the right hand featuring some chordal textures and the left hand providing a steady rhythmic base.

C Tpt.

Org.

This system contains measures 89 through 94. The C Trumpet part has a melodic line with a trill on the sixth measure. The Organ part continues with its accompaniment, featuring a trill in the right hand of the organ in the sixth measure.

C Tpt.

Org.

This system contains measures 95 through 99. The C Trumpet part has a melodic line with a trill on the eighth measure. The Organ part continues with its accompaniment, featuring a trill in the right hand of the organ in the eighth measure.

# TRUMPET ARIA - BWV 162.5 - Bach - Organ

6

100

C Tpt.

Org.

105

C Tpt.

Org.

109

C Tpt.

Org.

113

C Tpt.

Org.

## TRUMPET ARIA - BWV 162.5 - Bach - Organ

7

C Tpt.

Org.

Measures 117-120. The Trumpet part (C Tpt.) has a melodic line with a trill at measure 120. The Organ part (Org.) features a complex texture with rapid sixteenth-note passages in the right hand and a more rhythmic bass line in the left hand.

C Tpt.

Org.

Measures 121-125. The Trumpet part (C Tpt.) has a melodic line with a trill at measure 121. The Organ part (Org.) features a complex texture with rapid sixteenth-note passages in the right hand and a more rhythmic bass line in the left hand.

C Tpt.

Org.

Measures 126-130. The Trumpet part (C Tpt.) has a melodic line with a trill at measure 126. The Organ part (Org.) features a complex texture with rapid sixteenth-note passages in the right hand and a more rhythmic bass line in the left hand.

C Tpt.

Org.

Measures 131-135. The Trumpet part (C Tpt.) has a melodic line with a trill at measure 131. The Organ part (Org.) features a complex texture with rapid sixteenth-note passages in the right hand and a more rhythmic bass line in the left hand. The piece concludes with the instruction *Dal Segno*.