

B 4
Sonata Per Arpa
Con l'accompagnamento d'un Violino

ad Libitum

Del

Sigra Vincenzo Martinis



129

Andante

Violino

Handwritten musical notation for the first staff of the Violino part. It begins with a treble clef, a key signature of two flats (B-flat and E-flat), and a common time signature (C). The notation includes a whole rest followed by a series of eighth and sixteenth notes, some with slurs and accents. A dynamic marking 'p.' is present.

Handwritten musical notation for the second staff of the Violino part, continuing the melodic line with various rhythmic values and slurs.

Arpa

Handwritten musical notation for the Arpa part. It starts with a bass clef, a key signature of two flats, and a common time signature. The notation consists of a steady stream of eighth notes, some with slurs.

Handwritten musical notation for the third staff of the Violino part, featuring a mix of eighth and sixteenth notes.

Handwritten musical notation for the fourth staff of the Violino part, showing a continuation of the melodic development.

Handwritten musical notation for the second staff of the Arpa part, showing a more complex texture with some chords and slurs.

Handwritten musical notation for the fifth staff of the Violino part, featuring a series of chords and rests.

Handwritten musical notation for the sixth staff of the Violino part, continuing the melodic line.

Handwritten musical notation for the seventh staff of the Violino part, showing a series of chords and slurs.

Four empty musical staves at the bottom of the page.

Handwritten musical score system 1, consisting of three staves. The top staff contains a melodic line with eighth and sixteenth notes. The middle staff features a complex texture of sixteenth-note chords and arpeggios. The bottom staff provides a bass line with eighth notes. A dynamic marking *pp.* is present in the middle staff.

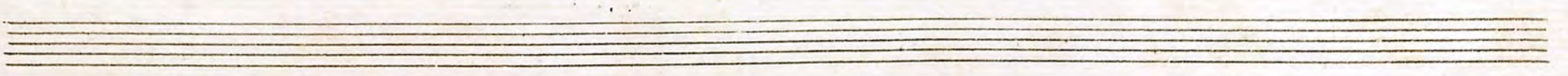
Handwritten musical score system 2, consisting of three staves. The top staff continues the melodic line, ending with a double bar line and a *6* time signature. The middle staff has a similar texture to the first system, with *pp.* and *pp.* dynamic markings. The bottom staff continues the bass line. A *6* time signature is also present at the end of the system.

Handwritten musical score system 3, consisting of three staves. The top staff continues the melodic line. The middle staff features a texture of sixteenth-note chords, with some notes marked with an accent (*^*). The bottom staff continues the bass line.

Four empty musical staves at the bottom of the page.

This image shows a page of handwritten musical notation, numbered 14 in the top left corner. The page contains three systems of music, each consisting of three staves. The notation is written in black ink on aged, slightly stained paper. The first system features a complex melodic line in the top staff with many sixteenth notes, a more rhythmic middle staff, and a bass line in the bottom staff. The second system has a more melodic top staff, a middle staff with some repeated rhythmic patterns, and a bass line. The third system includes a dynamic marking 'p' (piano) in the middle staff. The bottom of the page shows several empty staves.

Finis



6 13M
2h

£ 90,000

