

Double Bass

Paysages et marines

1. Sur la Falaise

Calme, mais sans trainer

2 2 2

12

18

28 Plus lent

3

2. Matin Calme

31 Molto moderato

3 4

41 Adagio (non troppo)

2 2

51

4 2

3. Promenade vers la Mer

Moderato

62

2 2

70



76

rall.**Un peu plus lent**

84



89

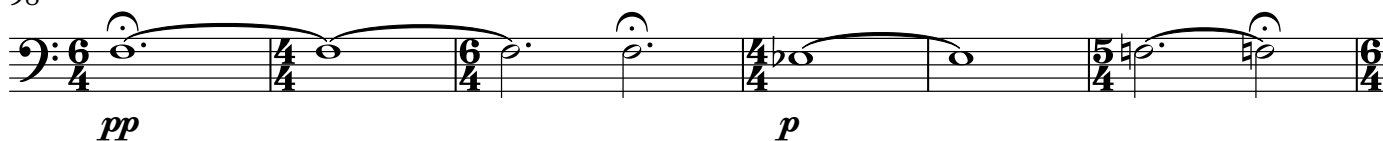
allarg.

94

Plus lent

4. Le Chant du Chevrier

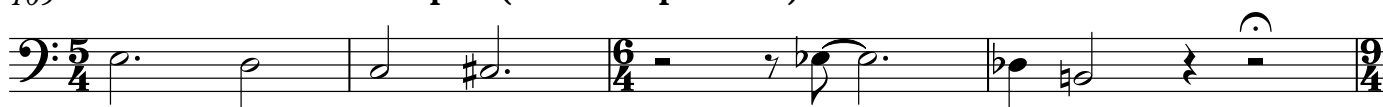
98

Moderato

104

Un peu plus lent

109

tres calme**Tempo I (le double plus vite)**

113



5. Soir d'Ete

116 **Tres calme et presque adagio**

127



135



f *mp* *rall.*

147 **Enserrant le Mouvt. (♩=♩)***pp*

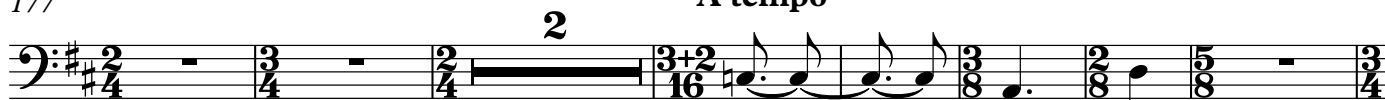
6. Ceux qui s'en vont Pecher au Large, dans la Nuit

151 **Largement (♩=60)***f**f*

164

*f**pp*

177

A tempo*p**mf*

186

*f*

3

190 **Plus lent****rall.****Plus lent encore***p**pp*

7. Soir d'Angoisses

196 **Non troppo adagio** (♩=54)

196 *mp*

201 *rall. e dim.*
p

Detailed description: This block contains the musical notation for measures 196 to 201 of the piece 'Soir d'Angoisses'. Measure 196 starts with a bass clef, a key signature of one sharp (F#), and a 4/4 time signature. It contains a half note F#4, a half note G4, a quarter note A4, a quarter note B4, a half note C5, and a half note B4. Measure 197 contains a half note A4, a half note G4, a quarter note F#4, a quarter note E4, a half note D4, and a half note C4. Measure 198 contains a half note B3, a half note A3, a quarter note G3, a quarter note F#3, a half note E3, and a half note D3. Measure 199 contains a half note C3, a half note B2, a quarter note A2, a quarter note G2, a half note F#2, and a half note E2. Measure 200 contains a half note D2, a half note C2, a quarter note B1, a quarter note A1, a half note G1, and a half note F#1. Measure 201 contains a half note E1, a half note D1, a quarter note C1, a quarter note B1, a half note A1, and a half note G1. The piece ends with a double bar line and a key signature change to two sharps (F# and C#).

8. La Chanson des Pommiers en Fleurs

206 **Allegro moderato**

206

219

224 *pp*

Detailed description: This block contains the musical notation for measures 206 to 224 of the piece 'La Chanson des Pommiers en Fleurs'. Measure 206 starts with a bass clef, a key signature of one sharp (F#), and a 4/4 time signature. It contains a half note F#4, a half note G4, a quarter note A4, a quarter note B4, a half note C5, and a half note B4. Measure 207 contains a half note A4, a half note G4, a quarter note F#4, a quarter note E4, a half note D4, and a half note C4. Measure 208 contains a half note B3, a half note A3, a quarter note G3, a quarter note F#3, a half note E3, and a half note D3. Measure 209 contains a half note C3, a half note B2, a quarter note A2, a quarter note G2, a half note F#2, and a half note E2. Measure 210 contains a half note D2, a half note C2, a quarter note B1, a quarter note A1, a half note G1, and a half note F#1. Measure 211 contains a half note E1, a half note D1, a quarter note C1, a quarter note B1, a half note A1, and a half note G1. Measure 212 contains a half note F#1, a half note G1, a quarter note A1, a quarter note B1, a half note C2, and a half note B1. Measure 213 contains a half note A1, a half note G1, a quarter note F#1, a quarter note E1, a half note D1, and a half note C1. Measure 214 contains a half note B1, a half note A1, a quarter note G1, a quarter note F#1, a half note E1, and a half note D1. Measure 215 contains a half note C2, a half note B1, a quarter note A1, a quarter note G1, a half note F#1, and a half note E1. Measure 216 contains a half note D2, a half note C2, a quarter note B1, a quarter note A1, a half note G1, and a half note F#1. Measure 217 contains a half note E2, a half note D2, a quarter note C2, a quarter note B1, a half note A1, and a half note G1. Measure 218 contains a half note F#2, a half note E2, a quarter note D2, a quarter note C2, a half note B1, and a half note A1. Measure 219 contains a half note C3, a half note B2, a quarter note A2, a quarter note G2, a half note F#2, and a half note E2. Measure 220 contains a half note D3, a half note C3, a quarter note B2, a quarter note A2, a half note G2, and a half note F#2. Measure 221 contains a half note E3, a half note D3, a quarter note C3, a quarter note B2, a half note A2, and a half note G2. Measure 222 contains a half note F#3, a half note E3, a quarter note D3, a quarter note C3, a half note B2, and a half note A2. Measure 223 contains a half note G3, a half note F#3, a quarter note E3, a quarter note D3, a half note C3, and a half note B2. Measure 224 contains a half note A3, a half note G3, a quarter note F#3, a quarter note E3, a half note D3, and a half note C3. The piece ends with a double bar line and a key signature change to two sharps (F# and C#).

9. Paysage d'Octobre

233 **Adagio** (♩=76)

233 *pp*

244

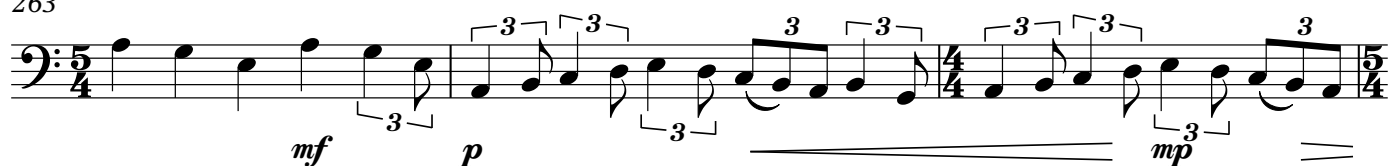
253 *rall.*

Detailed description: This block contains the musical notation for measures 233 to 253 of the piece 'Paysage d'Octobre'. Measure 233 starts with a bass clef, a key signature of one sharp (F#), and a 6/8 time signature. It contains a half note F#4, a half note G4, a quarter note A4, a quarter note B4, a half note C5, and a half note B4. Measure 234 contains a half note A4, a half note G4, a quarter note F#4, a quarter note E4, a half note D4, and a half note C4. Measure 235 contains a half note B3, a half note A3, a quarter note G3, a quarter note F#3, a half note E3, and a half note D3. Measure 236 contains a half note C3, a half note B2, a quarter note A2, a quarter note G2, a half note F#2, and a half note E2. Measure 237 contains a half note D2, a half note C2, a quarter note B1, a quarter note A1, a half note G1, and a half note F#1. Measure 238 contains a half note E1, a half note D1, a quarter note C1, a quarter note B1, a half note A1, and a half note G1. Measure 239 contains a half note F#1, a half note G1, a quarter note A1, a quarter note B1, a half note C2, and a half note B1. Measure 240 contains a half note A1, a half note G1, a quarter note F#1, a quarter note E1, a half note D1, and a half note C1. Measure 241 contains a half note B1, a half note A1, a quarter note G1, a quarter note F#1, a half note E1, and a half note D1. Measure 242 contains a half note C2, a half note B1, a quarter note A1, a quarter note G1, a half note F#1, and a half note E1. Measure 243 contains a half note D2, a half note C2, a quarter note B1, a quarter note A1, a half note G1, and a half note F#1. Measure 244 contains a half note E2, a half note D2, a quarter note C2, a quarter note B1, a half note A1, and a half note G1. Measure 245 contains a half note F#2, a half note E2, a quarter note D2, a quarter note C2, a half note B1, and a half note A1. Measure 246 contains a half note G2, a half note F#2, a quarter note E2, a quarter note D2, a half note C2, and a half note B1. Measure 247 contains a half note A2, a half note G2, a quarter note F#2, a quarter note E2, a half note D2, and a half note C2. Measure 248 contains a half note B2, a half note A2, a quarter note G2, a quarter note F#2, a half note E2, and a half note D2. Measure 249 contains a half note C3, a half note B2, a quarter note A2, a quarter note G2, a half note F#2, and a half note E2. Measure 250 contains a half note D3, a half note C3, a quarter note B2, a quarter note A2, a half note G2, and a half note F#2. Measure 251 contains a half note E3, a half note D3, a quarter note C3, a quarter note B2, a half note A2, and a half note G2. Measure 252 contains a half note F#3, a half note E3, a quarter note D3, a quarter note C3, a half note B2, and a half note A2. Measure 253 contains a half note G3, a half note F#3, a quarter note E3, a quarter note D3, a half note C3, and a half note B2. The piece ends with a double bar line and a key signature change to two sharps (F# and C#).

10. Chant de Pecheurs

256 **Moderato**

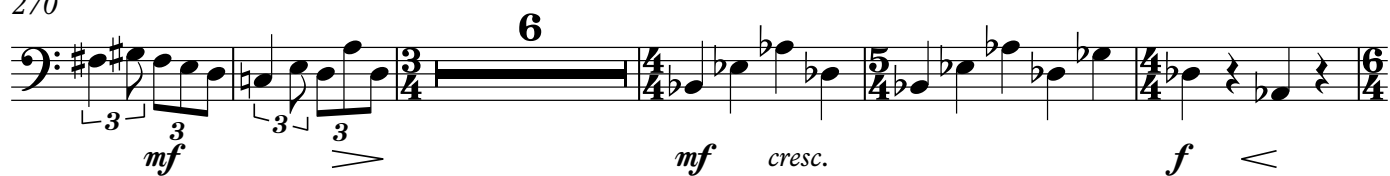
263



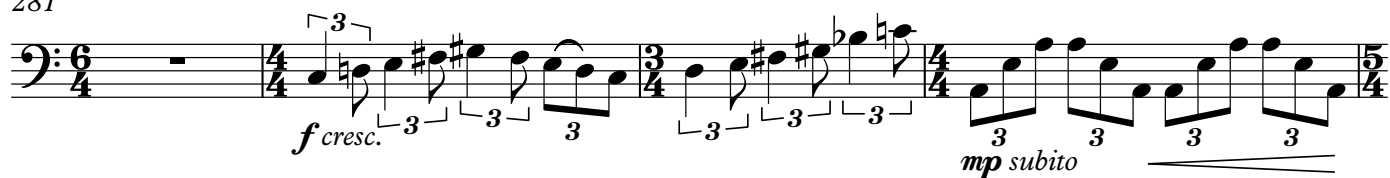
266



270



281



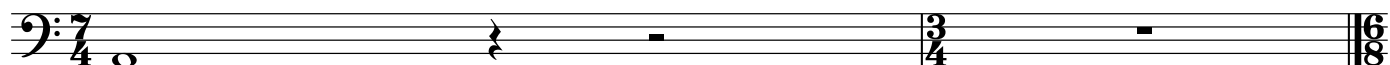
285



289



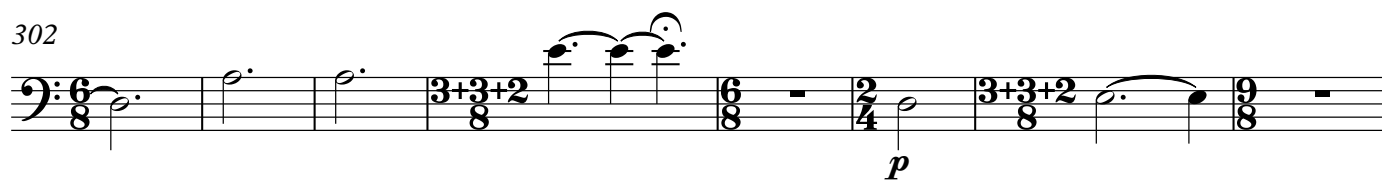
291

rall.

11. Dans les Grands Champs

293 **Moderato con moto**

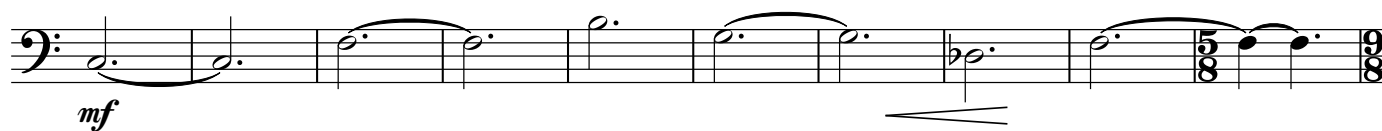
302



310

[Tempo]

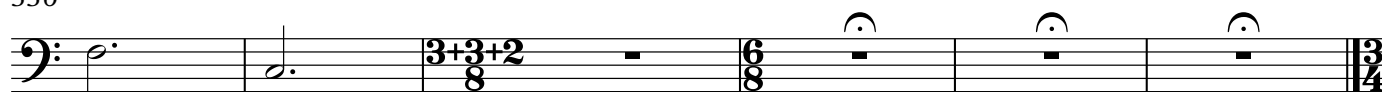
320



330



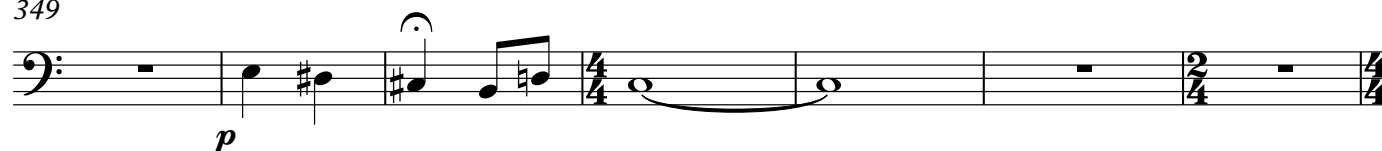
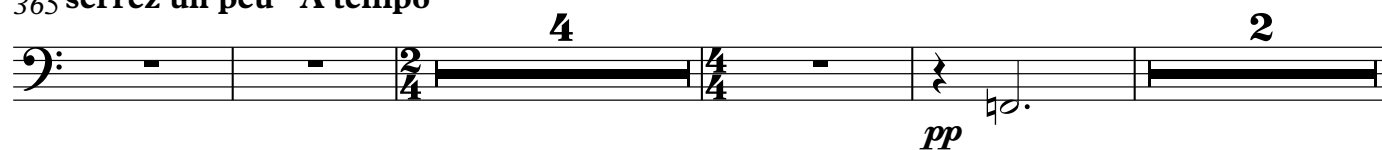
336



12. Poeme Virgilian

342 **Tres clame (adagio)**

349

356 **Tres calme****encor plus calme**365 **serrez un peu A tempo**375 **Bien calme**