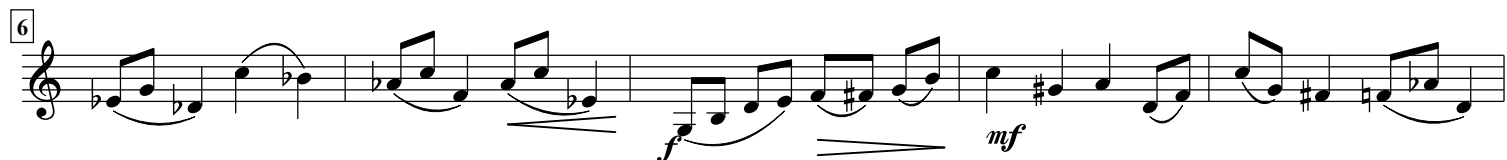


Kammertrio No. 1

arr. Hans Jørgen Messerschmidt

Richard Kursch

Moderato, un poco allegro



Horn F

62 *p* *f*

67 *p* *ritard.* *Vivace, ma* *p*

73

86 *mf* *G.P.* *G.P.* *p*

98 *pp*

111

122 *p*

136 *mf* *f* *pp* *Poco meno mosso*

147 *f* *Fine* *p*

158 1. 2. *mf* *p*

169

179 *f* *p* *Larghetto* *Scherzo D. C. al Fine* *p*

The musical score for Horn F spans measures 62 to 179. It begins with a piano (*p*) dynamic and a forte (*f*) dynamic. Measure 67 includes a piano (*p*) dynamic, a ritardando (*ritard.*) marking, and a tempo change to *Vivace, ma*. Measure 86 features a mezzo-forte (*mf*) dynamic, two grand piano (*G.P.*) markings, and a piano (*p*) dynamic. Measure 98 is marked *pp* (pianissimo). Measure 136 includes *mf*, *f*, and *pp* dynamics, followed by the tempo marking *Poco meno mosso*. Measure 147 has a forte (*f*) dynamic, a *Fine* marking, and a piano (*p*) dynamic. Measure 158 shows first and second endings with *mf* and *p* dynamics. Measure 179 includes a forte (*f*) dynamic, a piano (*p*) dynamic, a *Larghetto* tempo marking, and a section labeled *Scherzo D. C. al Fine* with a piano (*p*) dynamic.

187
Horn F

pp

193

mp

200

mf *mf*

208

f *mp* *f*

215

f *mp*

223

f Allegro

231

mp

239

ff *mp*

248

ff *mp*

261

ff *mf*

270

mp

278

ff *f*

288

Horn F

Measures 288-296: Horn F. The staff begins with a treble clef and a key signature of one sharp (F#). The melody consists of quarter and eighth notes, with a final triplet of eighth notes.

297

Measures 297-305: The staff continues the melodic line. Measure 297 starts with a triplet of eighth notes. Measure 305 ends with a triplet of eighth notes. The dynamic *mp* is indicated below measure 297.

306

Measures 306-312: The staff continues the melodic line. Measure 306 starts with a triplet of eighth notes. Measure 312 ends with a triplet of eighth notes. The dynamic *fff* is indicated below measure 312.

313

Measures 313-319: The staff continues the melodic line. Measure 313 starts with a triplet of eighth notes. Measure 319 ends with a triplet of eighth notes. The dynamic *mp* is indicated below measure 313.

320

Measures 320-327: The staff continues the melodic line. Measure 320 starts with a triplet of eighth notes. Measure 327 ends with a triplet of eighth notes. The dynamics *mf*, *ff*, *p*, and *ff* are indicated below measures 320, 324, 326, and 327 respectively.