

LE JOURNAL DU PRINTEMPS

Suite 1 Ouverture

Taille

*Johann Kaspar
Ferdinand Fischer*

7

13

17

21

25

29

33

Marche

Musical score for 'Marche' in Taille, measures 1-12. The score is written in treble clef with a common time signature (C). The melody consists of eighth and sixteenth notes. Measure 12 includes a first ending bracket labeled '1' and a second ending bracket labeled '2'.

Air des Combattans

Musical score for 'Air des Combattans' in Taille, measures 1-38. The score is written in treble clef with a 3/4 time signature. The tempo marking 'Vite' is placed above the first measure. The melody is characterized by rapid sixteenth-note passages. Measure numbers 6, 11, 17, 22, 28, 33, and 38 are indicated at the start of their respective staves. The piece concludes with a fermata over a half note in the final measure.

Rigaudon

Menuet

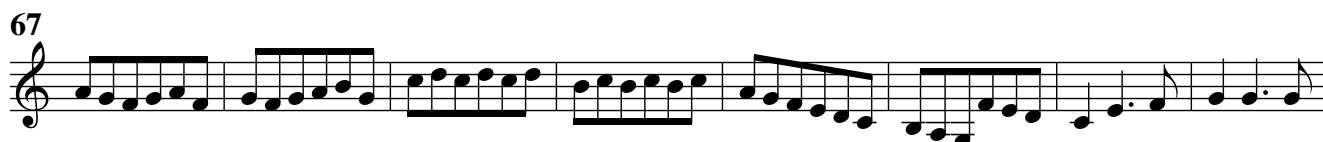
3/4

9

19

The Rose Tree
 The Rose Tree
 The Rose Tree

Chaconne



75



83



89



95



102



110



118



124



129



137



*Johann Kaspar
Ferdinand Fischer*

Taille

6

12

17

27

36

44

51


Plainte

Lentement

Lento

The musical notation for the Lento section is written on a single staff in treble clef with a 3/2 time signature. The key signature has one sharp (F#). The melody begins with a half rest followed by a dotted half note G4. This is followed by a quarter note A4, a half note B4, and another quarter note A4. The next measure contains a half note G4 and a quarter note F#4. The following measure consists of two eighth notes, E4 and D4, beamed together. The subsequent measure has a quarter note C4, a half note B3, and a quarter note A3. The final measure of this section features a dotted half note G3.

9



Musical notation for measure 9, showing a sequence of notes on a staff.

[illegible][illegible]

34

43

43

Bourrée

The image displays a musical score for the song "The Rose Tree". It consists of three staves of music, each beginning with a measure number (1, 6, and 11) and a treble clef. The key signature is one flat (B-flat), and the time signature is common time (C). The melody is written on a five-line staff. The first staff (measures 1-5) starts with a quarter note G4, followed by eighth notes A4-B4, quarter notes C5-B4, and eighth notes A4-G4. The second staff (measures 6-10) continues the melody, featuring a repeat sign (double bar line with two dots) after measure 8. The third staff (measures 11-15) concludes the piece with a final double bar line and repeat dots. The notes are: G4, A4, B4, C5, B4, A4, G4, F#4, E4, D4, C4, B3, A3, G3, F#3, E3, D3, C3, B2, A2, G2, F#2, E2, D2, C2, B1, A1, G1, F#1, E1, D1, C1, B0, A0, G0, F#0, E0, D0, C0, B-1, A-1, G-1, F#-1, E-1, D-1, C-1, B-2, A-2, G-2, F#-2, E-2, D-2, C-2, B-3, A-3, G-3, F#-3, E-3, D-3, C-3, B-4, A-4, G-4, F#-4, E-4, D-4, C-4, B-5, A-5, G-5, F#-5, E-5, D-5, C-5, B-6, A-6, G-6, F#-6, E-6, D-6, C-6, B-7, A-7, G-7, F#-7, E-7, D-7, C-7, B-8, A-8, G-8, F#-8, E-8, D-8, C-8, B-9, A-9, G-9, F#-9, E-9, D-9, C-9, B-10, A-10, G-10, F#-10, E-10, D-10, C-10, B-11, A-11, G-11, F#-11, E-11, D-11, C-11, B-12, A-12, G-12, F#-12, E-12, D-12, C-12, B-13, A-13, G-13, F#-13, E-13, D-13, C-13, B-14, A-14, G-14, F#-14, E-14, D-14, C-14, B-15, A-15, G-15, F#-15, E-15, D-15, C-15, B-16, A-16, G-16, F#-16, E-16, D-16, C-16, B-17, A-17, G-17, F#-17, E-17, D-17, C-17, B-18, A-18, G-18, F#-18, E-18, D-18, C-18, B-19, A-19, G-19, F#-19, E-19, D-19, C-19, B-20, A-20, G-20, F#-20, E-20, D-20, C-20, B-21, A-21, G-21, F#-21, E-21, D-21, C-21, B-22, A-22, G-22, F#-22, E-22, D-22, C-22, B-23, A-23, G-23, F#-23, E-23, D-23, C-23, B-24, A-24, G-24, F#-24, E-24, D-24, C-24, B-25, A-25, G-25, F#-25, E-25, D-25, C-25, B-26, A-26, G-26, F#-26, E-26, D-26, C-26, B-27, A-27, G-27, F#-27, E-27, D-27, C-27, B-28, A-28, G-28, F#-28, E-28, D-28, C-28, B-29, A-29, G-29, F#-29, E-29, D-29, C-29, B-30, A-30, G-30, F#-30, E-30, D-30, C-30, B-31, A-31, G-31, F#-31, E-31, D-31, C-31, B-32, A-32, G-32, F#-32, E-32, D-32, C-32, B-33, A-33, G-33, F#-33, E-33, D-33, C-33, B-34, A-34, G-34, F#-34, E-34, D-34, C-34, B-35, A-35, G-35, F#-35, E-35, D-35, C-35, B-36, A-36, G-36, F#-36, E-36, D-36, C-36, B-37, A-37, G-37, F#-37, E-37, D-37, C-37, B-38, A-38, G-38, F#-38, E-38, D-38, C-38, B-39, A-39, G-39, F#-39, E-39, D-39, C-39, B-40, A-40, G-40, F#-40, E-40, D-40, C-40, B-41, A-41, G-41, F#-41, E-41, D-41, C-41, B-42, A-42, G-42, F#-42, E-42, D-42, C-42, B-43, A-43, G-43, F#-43, E-43, D-43, C-43, B-44, A-44, G-44, F#-44, E-44, D-44, C-44, B-45, A-45, G-45, F#-45, E-45, D-45, C-45, B-46, A-46, G-46, F#-46, E-46, D-46, C-46, B-47, A-47, G-47, F#-47, E-47, D-47, C-47, B-48, A-48, G-48, F#-48, E-48, D-48, C-48, B-49, A-49, G-49, F#-49, E-49, D-49, C-49, B-50, A-50, G-50, F#-50, E-50, D-50, C-50, B-51, A-51, G-51, F#-51, E-51, D-51, C-51, B-52, A-52, G-52, F#-52, E-52, D-52, C-52, B-53, A-53, G-53, F#-53, E-53, D-53, C-53, B-54, A-54, G-54, F#-54, E-54, D-54, C-54, B-55, A-55, G-55, F#-55, E-55, D-55, C-55, B-56, A-56, G-56, F#-56, E-56, D-56, C-56, B-57, A-57, G-57, F#-57, E-57, D-57, C-57, B-58, A-58, G-58, F#-58, E-58, D-58, C-58, B-59, A-59, G-59, F#-59, E-59, D-59, C-59, B-60, A-60, G-60, F#-60, E-60, D-60, C-60, B-61, A-61, G-61, F#-61, E-61, D-61, C-61, B-62, A-62, G-62, F#-62, E-62, D-62, C-62, B-63, A-63, G-63, F#-63, E-63, D-63, C-63, B-64, A-64, G-64, F#-64, E-64, D-64, C-64, B-65, A-65, G-65, F#-65, E-65, D-65, C-65, B-66, A-66, G-66, F#-66, E-66, D-66, C-66, B-67, A-67, G-67, F#-67, E-67, D-67, C-67, B-68, A-68, G-68, F#-68, E-68, D-68, C-68, B-69, A-69, G-69, F#-69, E-69, D-69, C-69, B-70, A-70, G-70, F#-70, E-70, D-70, C-70, B-71, A-71, G-71, F#-71, E-71, D-71, C-71, B-72, A-72, G-72, F#-72, E-72, D-72, C-72, B-73, A-73, G-73, F#-73, E-73, D-73, C-73, B-74, A-74, G-74, F#-74, E-74, D-74, C-74, B-75, A-75, G-75, F#-75, E-75, D-75, C-75, B-76, A-76, G-76, F#-76, E-76, D-76, C-76, B-77, A-77, G-77, F#-77, E-77, D-77, C-77, B-78, A-78, G-78, F#-78, E-78, D-78, C-78, B-79, A-79, G-79, F#-79, E-79, D-79, C-79, B-80, A-80, G-80, F#-80, E-80, D-80, C-80, B-81, A-81, G-81, F#-81, E-81, D-81, C-81, B-82, A-82, G-82, F#-82, E-82, D-82, C-82, B-83, A-83, G-83, F#-83, E-83, D-83, C-83, B-84, A-84, G-84, F#-84, E-84, D-84, C-84, B-85, A-85, G-85, F#-85, E-85, D-85, C-85, B-86, A-86, G-86, F#-86, E-86, D-86, C-86, B-87, A-87, G-87, F#-87, E-87, D-87, C-87, B-88, A-88, G-88, F#-88, E-88, D-88, C-88, B-89, A-89, G-89, F#-89, E-89, D-89, C-89, B-90, A-90, G-90, F#-90, E-90, D-90, C-90, B-91, A-91, G-91, F#-91, E-91, D-91, C-91, B-92, A-92, G-92, F#-92, E-92, D-92, C-92, B-93, A-93, G-93, F#-93, E-93, D-93, C-93, B-94, A-94, G-94, F#-94, E-94, D-94, C-94, B-95, A-95, G-95, F#-95, E-95, D-95, C-95, B-96, A-96, G-96, F#-96, E-96, D-96, C-96, B-97, A-97, G-97, F#-97, E-97, D-97, C-97, B-98, A-98, G-98, F#-98, E-98, D-98, C-98, B-99, A-99, G-99, F#-99, E-99, D-99, C-99, B-100, A-100, G-100, F#-100, E-100, D-100, C-100, B-101, A-101, G-101, F#-101, E-101, D-101, C-101, B-102, A-102, G-102, F#-102, E-102, D-102, C-102, B-103, A-103, G-103, F#-103, E-103, D-103, C-103, B-104, A-104, G-104, F#-104, E-104, D-104, C-104, B-105, A-105, G-105, F#-105, E-105, D-105, C-105, B-106, A-106, G-106

Trio

7

13

Bourrée da capo

Menuet

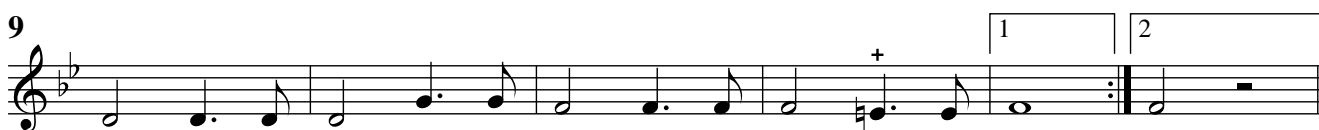
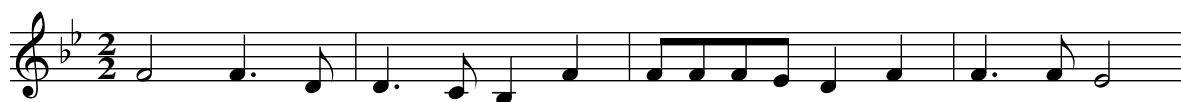
The image displays a musical score for the song "The Rose Tree". The score is written in 3/4 time and consists of three staves of music. The first staff begins with a treble clef and a 3/4 time signature. The melody is composed of eighth and quarter notes. The second staff continues the melody, featuring a repeat sign and a first ending. The third staff also continues the melody, ending with a repeat sign and a first ending. The score is presented in a clean, black-and-white format.

Suite 3

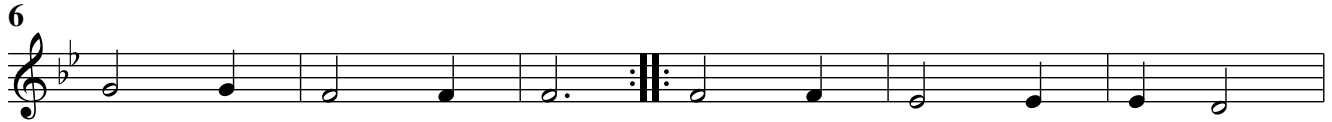
Ouverture

*Johann Kaspar
Ferdinand Fischer*

Taille



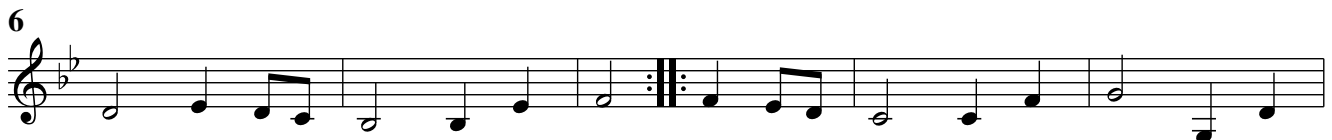
Menuet



Gavotte



Trio



Gavotte da capo

Chaconne



57

Taille
Suite 4
Ouverture

*Johann Kaspar
Ferdinand Fischer*

Taille

6

11

16

21

26

31

36

41

46

51

56

Entrée

5

10

15

20

Rondeau

7

13

20

27

33

40

Fine

Gavotte

Musical notation for the Gavotte, measures 1 through 11. The key signature is one flat (B-flat), and the time signature is common time (C). The melody consists of eighth and quarter notes, with a repeat sign at the end of measure 11.

Menuet

Musical notation for the Menuet, measures 1 through 12. The key signature is one flat (B-flat), and the time signature is 3/4. The melody features eighth and quarter notes, with first and second endings marked above measures 7 and 12. A sharp sign is present below the staff in measure 8.

Passacaille

Musical notation for the Passacaille, measures 1 through 33. The key signature is one flat (B-flat), and the time signature is 3/4. The melody is a continuous sequence of eighth and quarter notes, with first and second endings marked above measures 9 and 17. A sharp sign is present below the staff in measure 10.

38

43

50

57

64

72 *trio*

76

83

91

98

106

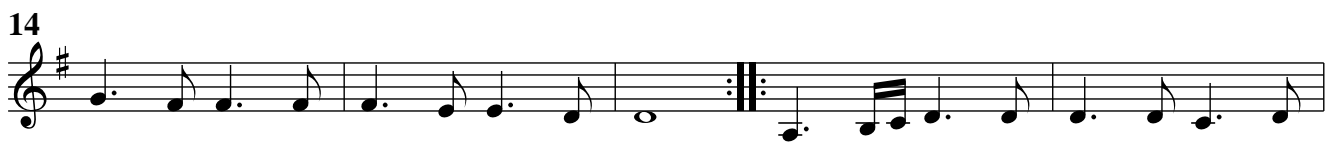
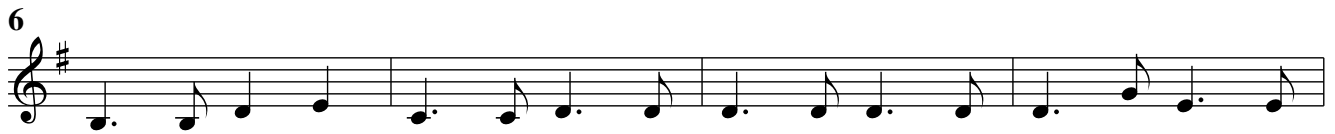
Suite 5

Ouverture

Taille*Johann Kaspar
Ferdinand Fischer*

Musical score for Taille, Suite 5 Ouverture, measures 1-40. The score is written in G major (one sharp) and 2/2 time. It consists of eight staves of music. The first staff (measures 1-5) begins with a treble clef and a key signature of one sharp. The second staff (measures 6-11) continues the melody. The third staff (measures 12-16) includes a first ending bracket (1) and a second ending bracket (2). The fourth staff (measures 17-21) begins with a repeat sign. The fifth staff (measures 22-25) continues the melody. The sixth staff (measures 26-29) continues the melody. The seventh staff (measures 30-33) ends with a double bar line and a 2/2 time signature. The eighth staff (measures 34-38) continues the melody. The final staff (measures 39-40) includes a first ending bracket (1) and a second ending bracket (2).

Entrée



Chaconne

6

12

19

26

32

38

44

50

57

63

Fin

+

Traquenard

5

9

13

Menuet

10

18

Suite 6

Ouverture

*Johann Kaspar
Ferdinand Fischer*

Taille

7

13

20

28

36

44

52

60

Taille
Brandle

23

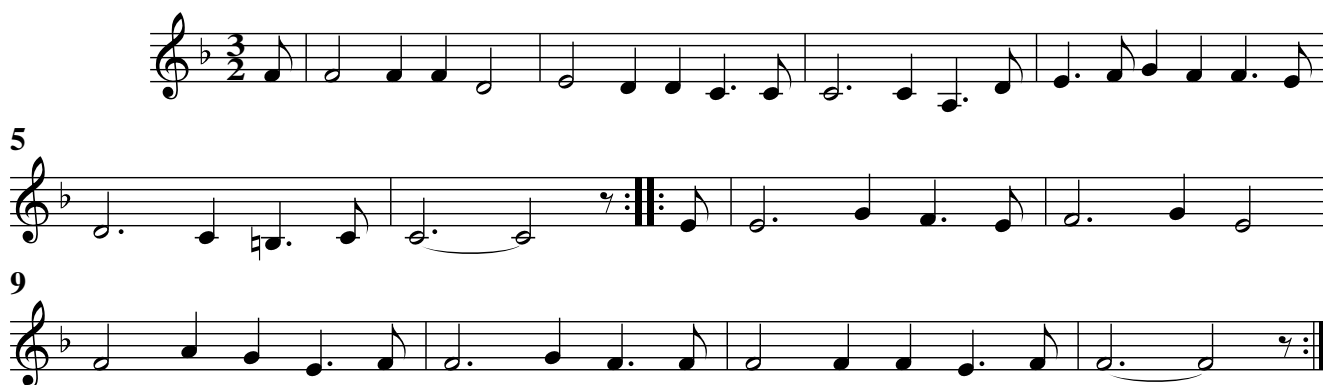
Musical score for Brandle in Taille, measures 1-33. The score is written in treble clef with a key signature of one flat (B-flat) and a common time signature (C). The melody consists of eighth and sixteenth notes, with some rests. Measure numbers 6, 12, 19, 25, and 33 are indicated at the start of their respective staves. A first ending bracket labeled '1' spans measures 20-22, and a second ending bracket labeled '2' spans measures 23-24, with the word 'Gay' written above the second ending. The piece concludes with a double bar line and repeat dots.

Amener

Musical score for Amener, measures 1-16. The score is written in treble clef with a key signature of one flat (B-flat) and a 3/4 time signature. The melody is composed of eighth and sixteenth notes. Measure numbers 8 and 16 are indicated at the start of their respective staves. The piece ends with a double bar line and repeat dots.

Gavotte

Musical score for Gavotte, measures 1-6. The score is written in treble clef with a key signature of one flat (B-flat) and a common time signature (C). The melody features eighth and sixteenth notes. Measure number 6 is indicated at the start of the second staff. The piece concludes with a double bar line and repeat dots.

Taille
Courante

Musical score for Courante in Taille, 3/2 time signature. The piece consists of three staves. The first staff contains the main melody. The second staff, starting at measure 5, features a repeat sign and a first ending. The third staff, starting at measure 9, continues the melody and ends with a repeat sign.

Sarabande



Musical score for Sarabande, 3/4 time signature. The piece consists of two staves. The first staff contains the main melody. The second staff, starting at measure 9, features a repeat sign and a first ending.

Bourrée



Musical score for Bourrée, 3/4 time signature. The piece consists of three staves. The first staff contains the main melody. The second staff, starting at measure 5, features a repeat sign and a first ending. The third staff, starting at measure 11, continues the melody and ends with a repeat sign.

Menuet



Musical score for Menuet, 3/4 time signature. The piece consists of three staves. The first staff contains the main melody. The second staff, starting at measure 7, features a repeat sign and a first ending. The third staff, starting at measure 12, continues the melody and ends with a repeat sign.

Suite 7

Ouverture

Taille

*Johann Kaspar
Ferdinand Fischer*

6

12

17

21

24

27

30

33

Passacaille

8

17

25

32

39

47

55

62

70

78

86

94



101



108



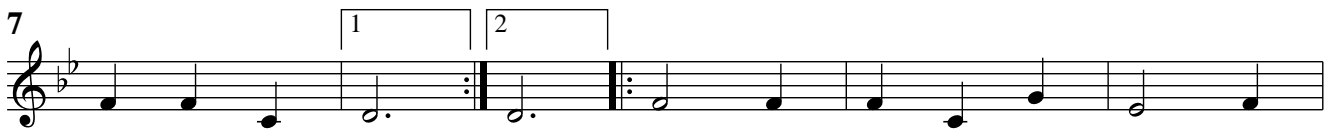
114



Bourrée



Menuet



Suite 8

Ouverture

*Johann Kaspar
Ferdinand Fischer*

Taille

6

12

17

21

25

29

33

37

41

45

52



59



Entrée



6



11



15



20



24



Canaries



5



10



Gavotte en Rondeau



Passepied



Taille
Echo

31

Musical score for the Echo section of the Menuet da capo, measures 1-44. The score is written in treble clef with a common time signature (C). The melody consists of eighth and sixteenth notes, with dynamic markings of *f* (forte) and *p* (piano) alternating throughout. The section ends with a repeat sign at measure 44.

Measures 1-44:

- Measures 1-8: *f* *p* *f* *p* *f* *p*
- Measures 9-16: *f* *p* *f* *p*
- Measures 17-24: *f* *p*
- Measures 25-32: *f* *p* *f* *p*
- Measures 33-40: *f* *p* *f* *p*
- Measures 41-44: *f* *p*

Menuet

Musical score for the Menuet section, measures 1-11. The score is written in treble clef with a 3/4 time signature. The melody consists of eighth and sixteenth notes, with a repeat sign at measure 11.

Measures 1-11:

- Measures 1-11: *f* *p*

Trio

Musical score for the Trio section of the Menuet da capo, measures 1-11. The score is written in treble clef with a 3/4 time signature. The melody consists of eighth and sixteenth notes, with a repeat sign at measure 11.

Measures 1-11:

- Measures 1-11: *f* *p*

Menuet da capo

J. K. Fischer: Suite 8 in C (Le Journal du Printemps)