

Ouverture und Suiten aus Thésée

Ouverture

J.-B. Lully

6

11

16

1. 2. [Allegro]

21

27

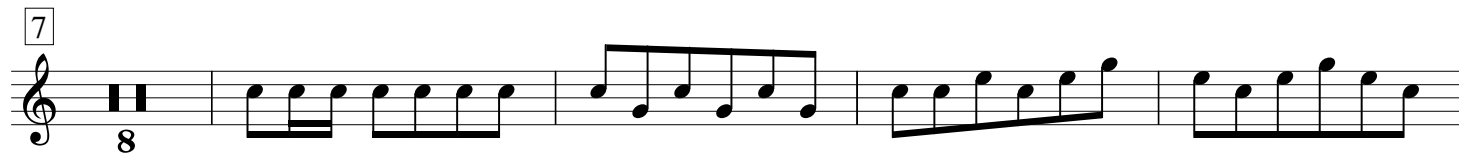
33

39

45

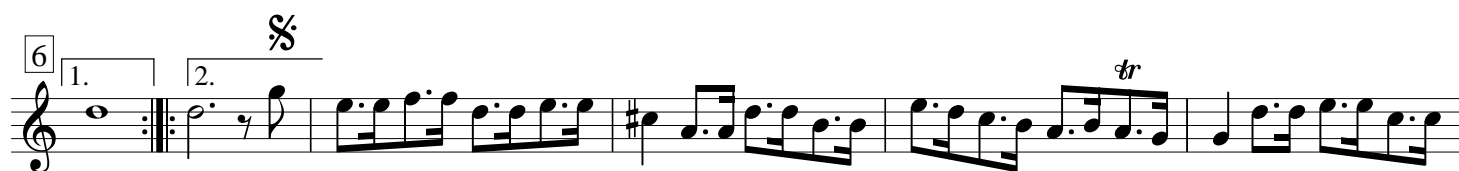
[1. Suite]

1. Prélude

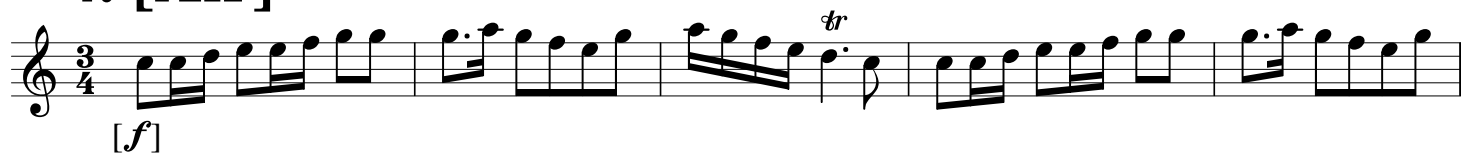


Trio tacet

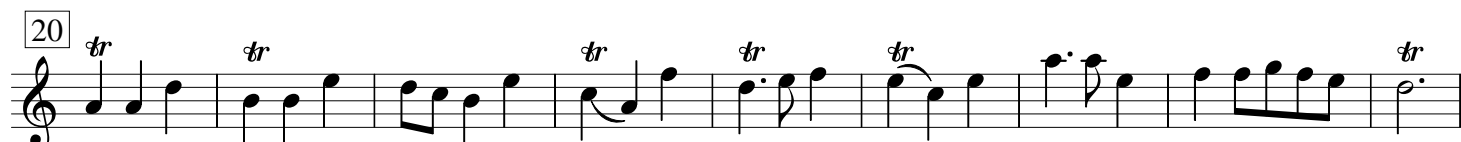
3. Combattans



4. [Air]



5. Air



Trio tacet

2. Suite 7. Prélude



8. Air

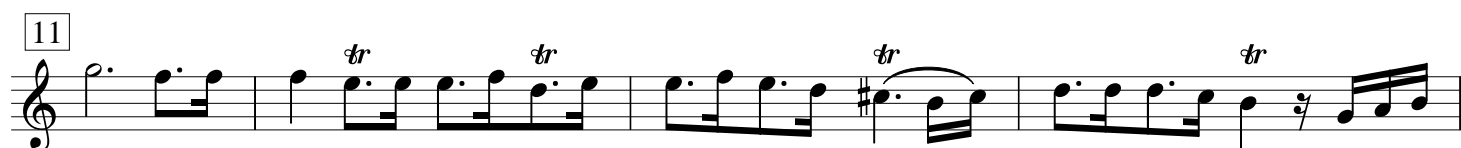
Musical score for '8. Air' in B-flat major, 3/4 time. The score consists of five staves of music. The first staff begins with a treble clef, a key signature of one flat (B-flat), and a 3/4 time signature. It features a series of eighth and sixteenth notes, including a triplet of eighth notes. The second staff starts at measure 6 and includes a trill (tr) and first/second endings. The third staff starts at measure 11 and includes two trills. The fourth staff starts at measure 16 and includes a trill. The fifth staff starts at measure 21 and includes a trill and first/second endings. The piece concludes with a double bar line.

9. Air

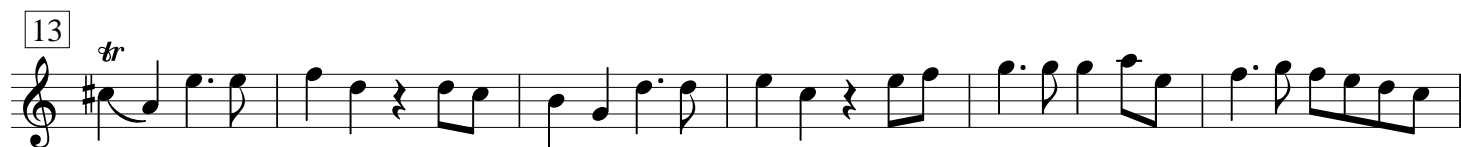
Musical score for '9. Air' in B-flat major, 3/4 time. The score consists of four staves of music. The first staff begins with a treble clef, a key signature of one flat (B-flat), and a 3/4 time signature. It features a series of eighth and sixteenth notes, including a trill (tr). The second staff starts at measure 8 and includes trills and first/second endings. The third staff starts at measure 16 and includes a trill. The fourth staff starts at measure 22 and includes a trill. The piece concludes with a double bar line.

3. Suite

10. Prélude



11. Air



Trio tacet

13. Air

Musical score for '13. Air' in 6/8 time. The score consists of three staves. The first staff begins with a repeat sign and a trill (tr) over a dotted quarter note. The second staff continues the melody with trills. The third staff includes first and second endings, marked with '1.' and '2.' above the staff.

4. Suite 14. Air

Musical score for '4. Suite 14. Air' in 3/4 time. The score consists of three staves. The first staff begins with a trill (tr) over a dotted quarter note. The second staff continues the melody with trills. The third staff includes first and second endings, marked with '1.' and '2.' above the staff.

15. Gigue

Musical score for '15. Gigue' in 6/4 time. The score consists of four staves. The first staff begins with a repeat sign and a trill (tr) over a dotted quarter note. The second staff continues the melody with trills. The third staff includes first and second endings, marked with '1.' and '2.' above the staff. The fourth staff ends with a 'da capo' instruction and a repeat sign.

da capo %