

Piano Sonata No. 13 in E-Flat Major

Cello

Ludwig van Beethoven

Joshua Choe

Andante

4

8

12

17

22

26

30

pp

pp

p

p

pp

pp

p

cresc.

f

dim.

p

pp

cresc.

f

dim.

34

p *cresc.* *f* *dim.*

38

p

Allegro

f *p* *f* *p* *f* *p*

45

p *p* *f* *f*

51

p *cresc.* *p*

55

f *f* *f* *f* *p*

62

f *f* *f* *f*

tempo 1

65

pp

68

73

78

84

89

97

105

112

pp

pp *cresc.* *f* *dim.* *p* *pp* *cresc.*

f *pp*

p *pp* *dim.* *Attacca subito l'Allegro* *pp*

Allegro molto vivace

p

f

p

cresc.

120



129



136



144



151



159



167



175



f

184

193

p

2

2

Detailed description: This musical staff spans measures 184 to 193. It begins with a piano (*p*) dynamic. The melody consists of eighth and quarter notes, with two measures of a half-note rest marked with a '2'. The key signature has two flats.

193

201

f

2

Detailed description: This musical staff spans measures 193 to 201. It begins with a forte (*f*) dynamic. The melody continues with eighth and quarter notes, including a measure of a half-note rest marked with a '2'. The key signature has two flats.

201

208

p

Detailed description: This musical staff spans measures 201 to 208. It begins with a piano (*p*) dynamic. The melody features a series of eighth notes, followed by a half-note rest marked with a '2'. The key signature has two flats.

208

217

cresc.

2

2

Detailed description: This musical staff spans measures 208 to 217. It begins with a crescendo (*cresc.*) dynamic. The melody includes a half-note rest marked with a '2'. The key signature has two flats.

217

225

f

sf

2

Detailed description: This musical staff spans measures 217 to 225. It begins with a forte (*f*) dynamic. The melody features a half-note rest marked with a '2'. The key signature has two flats.

225

232

sf *sf* *sf* *ff* *sf* *sf* *sf*

Detailed description: This musical staff spans measures 225 to 232. It features a series of dynamic markings: *sf*, *sf*, *sf*, *ff*, *sf*, *sf*, and *sf*. The melody consists of eighth and quarter notes. The key signature has two flats.

232

sf

Attacca subito l'Adagio

Detailed description: This musical staff spans measures 232 to 237. It begins with a sforzando (*sf*) dynamic. The staff ends with a double bar line and the instruction 'Attacca subito l'Adagio'. The key signature changes to three flats, and the time signature changes to 3/4.

Adagio con espressione

237

p *cresc.* *fp* *cresc.* *fp* *cresc.*

Detailed description: This musical staff spans measures 237 to 245. It begins with a piano (*p*) dynamic. The tempo is marked 'Adagio con espressione'. The melody consists of eighth and quarter notes, with a half-note rest marked with a '2'. The key signature has three flats, and the time signature is 3/4.

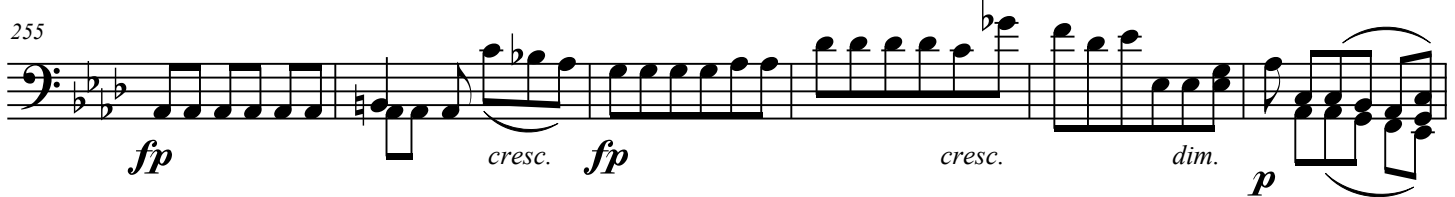
243



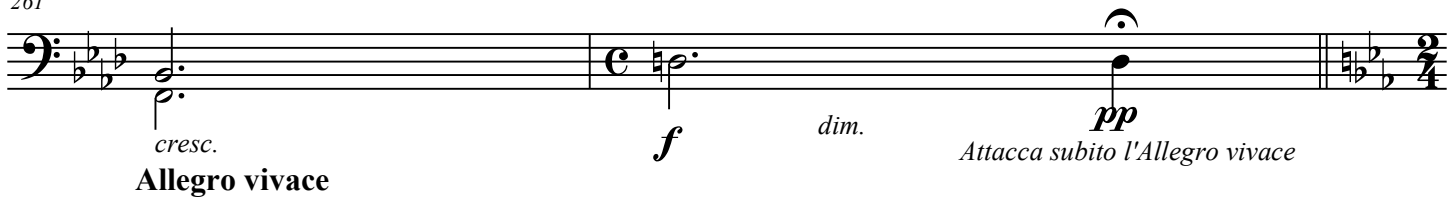
249



255



261



268



274



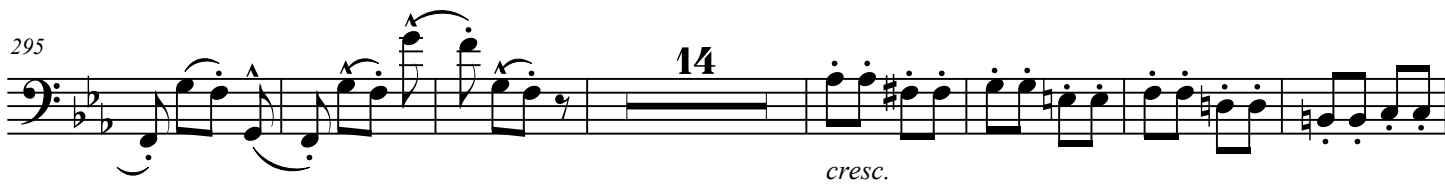
280



286



295



316



322



328



334



340



347



353



359



365



374



378



385

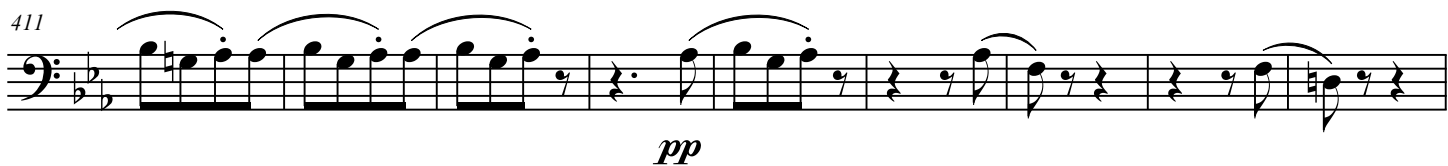


392



397





465

14

p *cresc.* *f*

486

492

498

504

sf *sf* *sf* *sf* *sf* *sf* *sf*

511

sf *sf* *cresc.* *ff* *sf*

Adagio

518

p *cresc.* *fp* *cresc.* *fp* *cresc.*

524

dim. *p* *p* *Presto* *p*

531



540

