

Trios from Cantata 162.5
LET VOICE SOLO PARTS ALWAYS PREDOMINATE
(play small non-cue notes for additional lines)

J. S. Bach [arr. P. Lang] BWV 162.5
Aria for Alto, Tenor and Bc "In meinem Gott"
arr. in 3 parts: 1. Violin or Viola or Cello, 2. and 3. Viola or Cello

$\text{♩} = 104$
opt. line

1 Violin for Alto Solo
bwv 162.5 s3

1 Viola for Alto Solo
bwv 162.5 s3

1 Violoncello for Alto Solo
bwv 162.5 s3

2 Viola for Tenor Solo
bwv 162.5 s3

2 Violoncello for Tenor Solo
bwv 162.5 s3

3 Viola for Bc
bwv 162.5 s3

3 Violoncello for Bc
bwv 162.5 s3

f

6

Vln. 1

Vla.

Vc.

Vla.

Vc.

Vla.

Vc.

11

Vln. 1

Vla.

Vc.

Vla.

Vc.

Vla.

Vc.

poco rit.

p

p

p

f

f

poco rit.

mf

mf

f

Tenor

Tenor

Tenor

Solo

Solo

16

Vln. 1

Vla.

Vc.

Vla.

Vc.

Vla.

Vc.

f

21

Vln. 1

Vla.

Vc.

Vla.

Vc.

Vla.

Vc.

f

25

Vln. 1

Vla.

Vc.

Vla.

Vc.

Vla.

Vc.

f

30

Vln. 1

Vla.

Vc.

Vla.

Vc.

Vla.

Vc.

34

Vln. 1

Vla.

Vc.

Vla.

Vc.

Vla.

Vc.

p

39

Vln. 1

Vla.

Vc.

Vla.

Vc.

Vla.

Vc.

f

mf

mf

44

Vln. 1

Vla.

Vc.

Vla.

Vc.

Vla.

Vc.

49

opt. line

Vln. 1

Vla.

Vc.

Vla.

Vc.

Vla.

Vc.

54

Vln. 1

Vla.

Vc.

Vla.

Vc.

Vla.

Vc.

mf

mf

mf

mf

mp

mp

59

Vln. 1

Vla.

Vc.

Vla.

Vc.

Vla.

Vc.

64

Vln. 1

Vla.

Vc.

Vla.

Vc.

Vla.

Vc.

69

Vln. 1

Vla.

Vc.

Vla.

Vc.

Vla.

Vc.

74

Vln. 1

Vla.

Vc.

Vla.

Vc.

Vla.

Vc.

78

Vln. 1

Vla.

Vc.

Vla.

Vc.

Vla.

Vc.

82

Vln. 1

Vla.

Vc.

Vla.

Vc.

Vla.

Vc.

86

Vln. 1

Vla.

Vc.

Vla.

Vc.

Vla.

Vc.

91

Vln. 1

Vla.

Vc.

Vla.

Vc.

Vla.

Vc.

96

Vln. 1

Vla.

Vc.

Vla.

Vc.

Vla.

Vc.

104

Vln. 1

Vla.

Vc.

Vla.

Vc.

Vla.

Vc.

tr

f

f

f

mf

mf

108

The image shows a musical score for three instruments: Violin I (Vln. I), Viola (Vla.), and Violoncello (Vc.). The score is divided into four measures, numbered 108, 109, 110, and 111. The Violin I part is written in treble clef with a key signature of one sharp (F#). The Viola and Violoncello parts are written in bass clef with a key signature of one sharp (F#). The Violoncello part is written in bass clef with a key signature of one sharp (F#). The score includes various musical notations such as notes, rests, and slurs.

Vln. I

Vla.

Vc.

Vla.

Vc.

Vla.

Vc.

112

Vln. 1

Vla.

Vc.

Vla.

Vc.

Vla.

Vc.

116

Vln. 1

Vla.

Vc.

Vla.

Vc.

Vla.

Vc.

120

Vln. 1

Vla.

Vc.

Vla.

Vc.

Vla.

Vc.

124

Vln. 1

Vla.

Vc.

Vla.

Vc.

Vla.

Vc.

125

126

127

128

Vln. 1

Vla.

Vc.

Vla.

Vc.

Vla.

Vc.

129

130

131

1 Violin for Alto Solo bwv 162.5 s3

Trios from Cantata 162.5

LET VOICE SOLO PARTS ALWAYS PREDOMINATE
(play small non-cue notes for additional lines)

J. S. Bach [arr. P. Lang] BWV 162.5

Aria for Alto, Tenor and Bc " In meinem Gott"

arr. in 3 parts: 1. Violin or Viola or Cello, 2. and 3. Viola or Cello

♩ = 104
opt. line



15



22



29



36



45



56



65



75



80

f

86

93

5

p

103

tr

f

110

116

121

p

127

f

rit.

135

A tempo

2

poco rit.

1 Viola for Alto Solo bwv 162.5 s3

Trios from Cantata 162.5

LET VOICE SOLO PARTS ALWAYS PREDOMINATE
(play small non-cue notes for additional lines)

J. S. Bach [arr. P. Lang] BWV 162.5

Aria for Alto, Tenor and Bc " In meinem Gott"

arr. in 3 parts: 1. Violin or Viola or Cello, 2. and 3. Viola or Cello

♩ = 104
opt. line



15



22



29



36



45



56



65



75



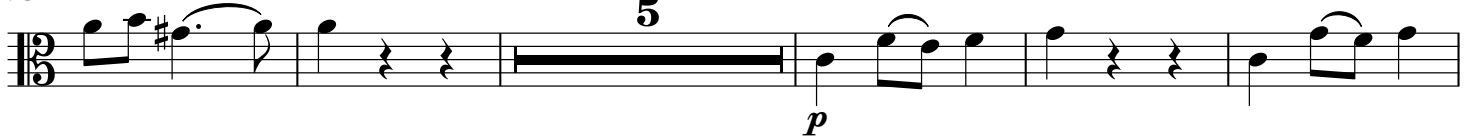
80



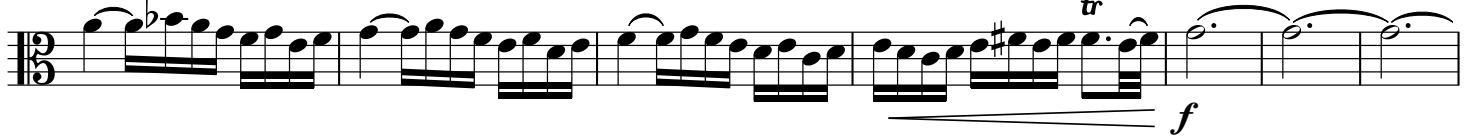
86



93



103



110



116



121



127



135

A tempo



1 Violoncello for Alto Solo bwv 162.5 s3

Trios from Cantata 162.5

LET VOICE SOLO PARTS ALWAYS PREDOMINATE

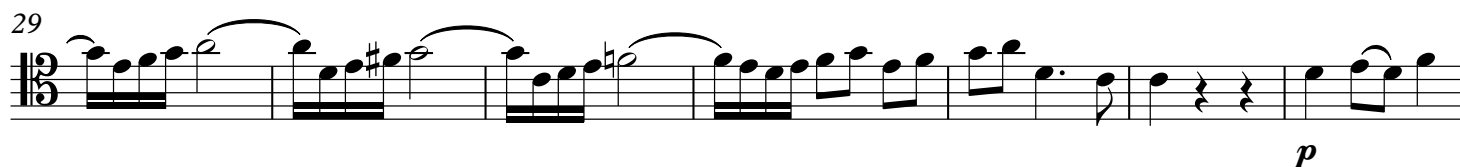
(play small non-cue notes for additional lines)

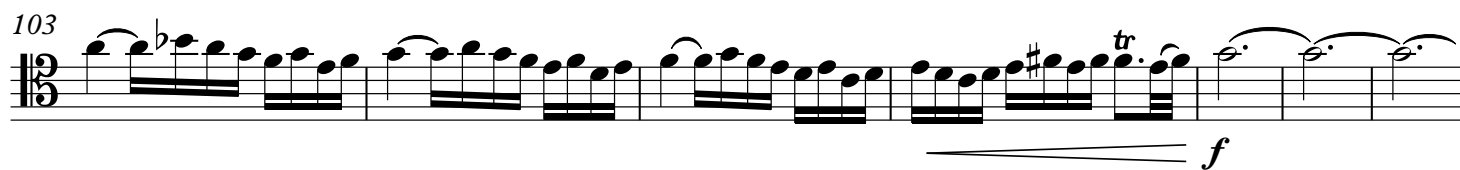
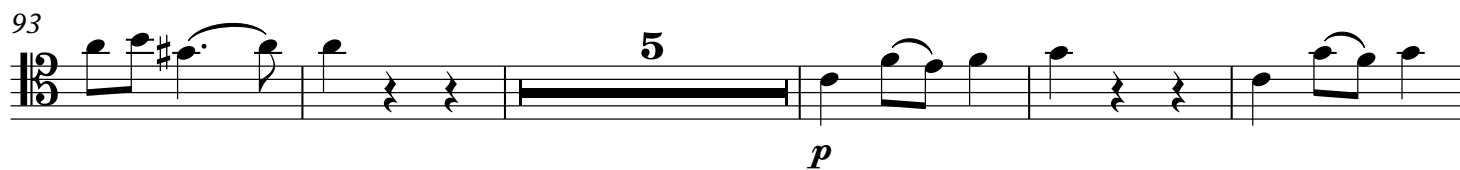
J. S. Bach [arr. P. Lang] BWV 162.5

Aria for Alto, Tenor and Bc " In meinem Gott"

arr. in 3 parts: 1. Violin or Viola or Cello, 2. and 3. Viola or Cello

♩ = 104
opt. line





2 Viola for Tenor Solo bwv 162.5 s3

Trios from Cantata 162.5

LET VOICE SOLO PARTS ALWAYS PREDOMINATE

(play small non-cue notes for additional lines)

J. S. Bach [arr. P. Lang] BWV 162.5

Aria for Alto, Tenor and Bc " In meinem Gott"

arr. in 3 parts: 1. Violin or Viola or Cello, 2. and 3. Viola or Cello

♩ = 104
opt. line



15



22



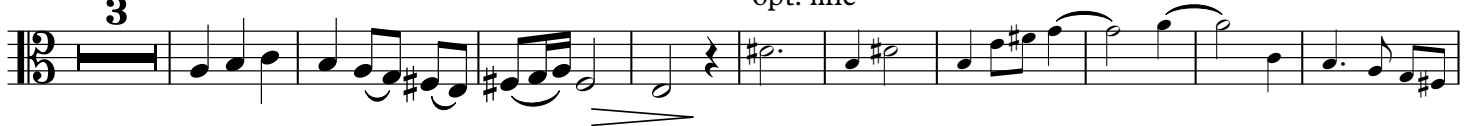
29



35



44



57



66



75



80



86



93



103



110



116



121



127



132



139



2 Violoncello for Tenor Solo bwv 162.5 s3

Trios from Cantata 162.5

LET VOICE SOLO PARTS ALWAYS PREDOMINATE

(play small non-cue notes for additional lines)

J. S. Bach [arr. P. Lang] BWV 162.5

Aria for Alto, Tenor and Bc "In meinem Gott"

arr. in 3 parts: 1. Violin or Viola or Cello, 2. and 3. Viola or Cello

♩ = 104
opt. line

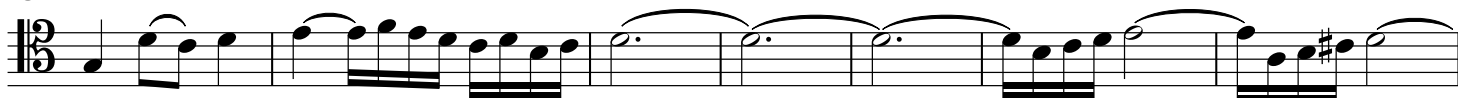
Bc

Bc

Solo



15



22



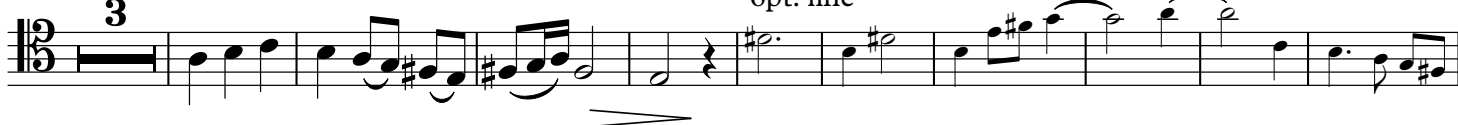
29



35



44



57



66



75



80



3 Viola for Bc bwv 162.5 s3

Trios from Cantata 162.5

LET VOICE SOLO PARTS ALWAYS PREDOMINATE
(play small non-cue notes for additional lines)

J. S. Bach [arr. P. Lang] BWV 162.5

Aria for Alto, Tenor and Bc "In meinem Gott"

arr. in 3 parts: 1. Violin or Viola or Cello, 2. and 3. Viola or Cello

♩ = 104

8 *f*

14 *poco rit.* *mf*

20

27

33

40 *p*

47 *mf*

53 *f*

59 *mp*

65

71



77



83



88



94



100



106



111



117



123



129



136 A tempo

143 *f**mf*

3 Violoncello for Bc bwv 162.5 s3

Trios from Cantata 162.5
LET VOICE SOLO PARTS ALWAYS PREDOMINATE
(play small non-cue notes for additional lines)

J. S. Bach [arr. P. Lang] BWV 162.5

Aria for Alto, Tenor and Bc " In meinem Gott"

arr. in 3 parts: 1. Violin or Viola or Cello, 2. and 3. Viola or Cello

♩ = 104

8 *f*

14 *poco rit.* *mf*

20

27

33

40 *p*

47 *mf*

53 *f*

59 *mp*

65

71

77

83

88

94

100

106

111

117

123

129

136 **A tempo**

143 **f**

mf

p

f

rit.

poco rit.

mf