

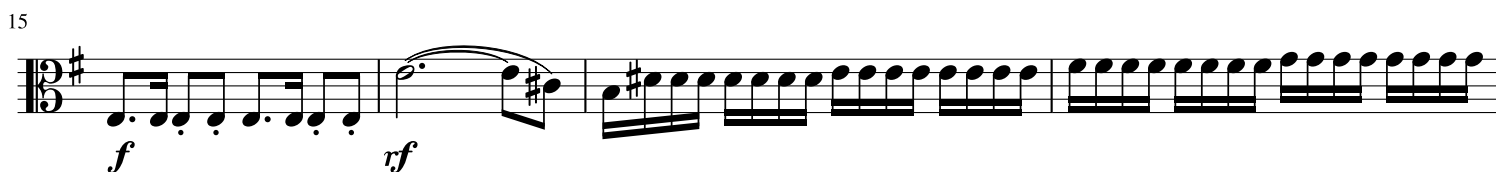
Viola

String Quartet in e-minor

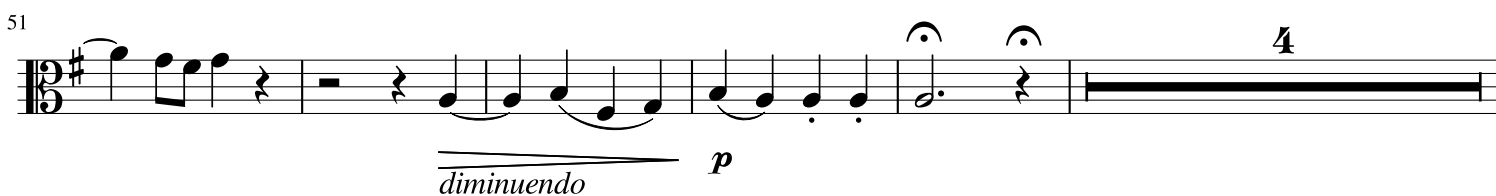
op. 7 no. 1

Jacques Féréol Mazas

Adagio M.M. ♩ = 104



Agitato non troppo presto M.M. ♩ = 96



60

68

78

87

96

[illegible]

111

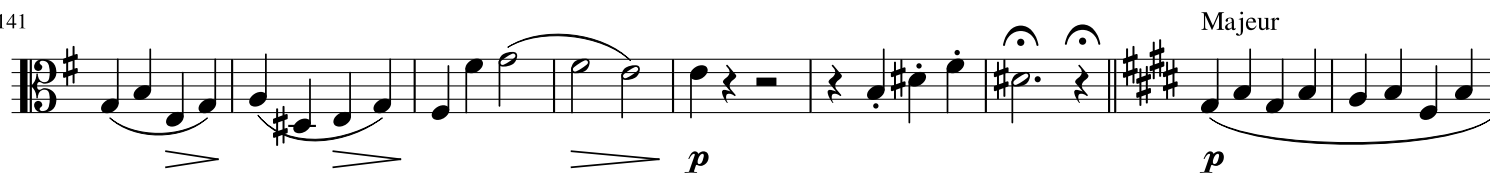
A musical score for the song 'The Rose Tree'. The score is written on a single staff with a treble clef and a key signature of one sharp (F#). The time signature is 3/4. The melody begins with a forte (*ff*) dynamic and features a series of eighth and sixteenth notes, including some beamed sixteenth notes. The melody then transitions to a piano (*p*) dynamic, marked by a wedge-shaped decrescendo hairpin. The final part of the score consists of a few more notes, including a half note and a quarter note, ending with a fermata.

120

130



141



150



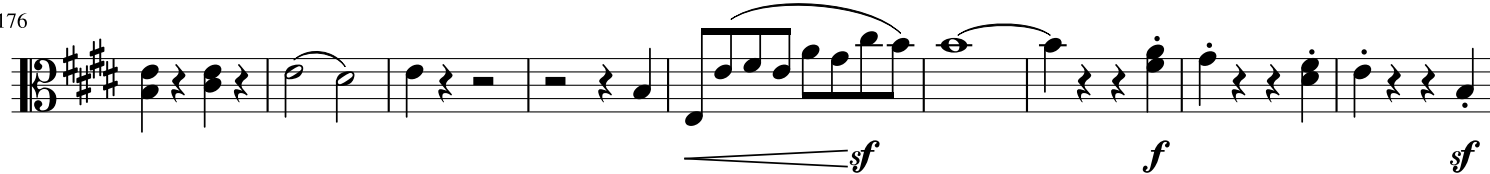
159



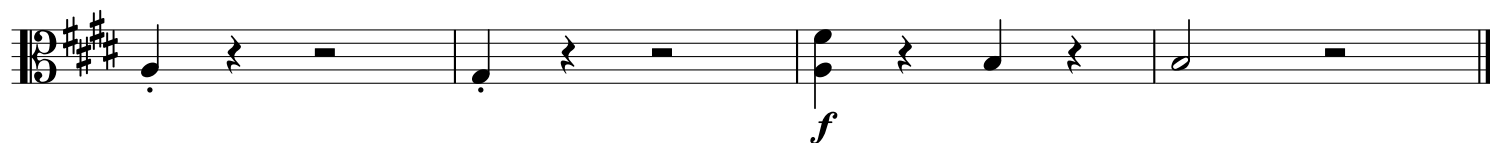
168



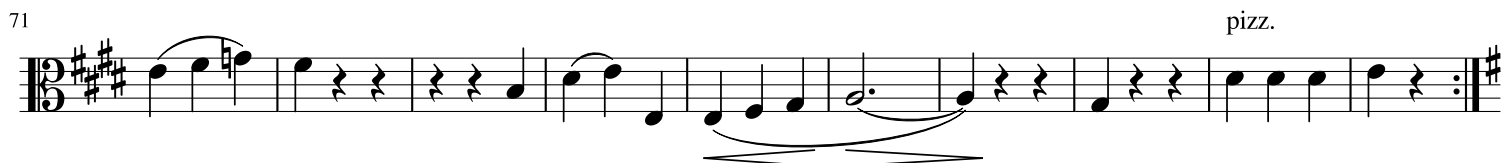
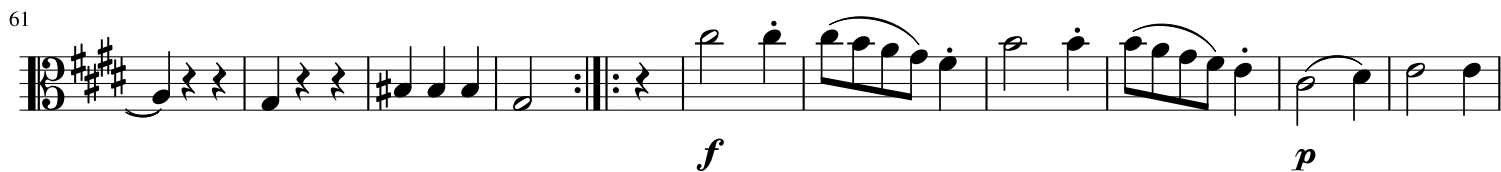
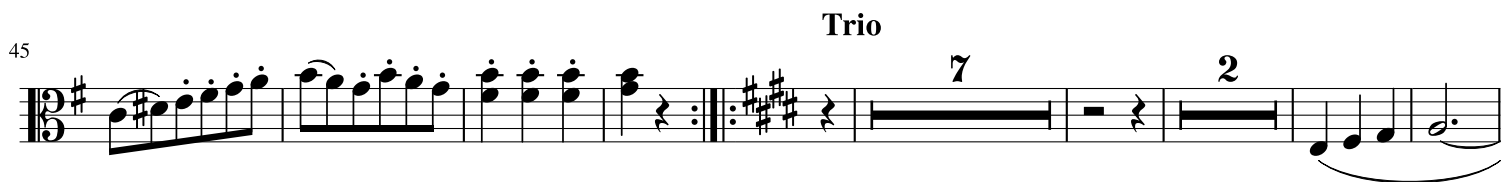
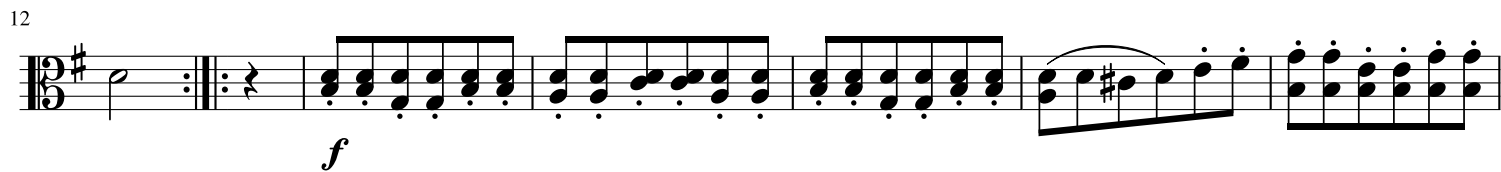
176



185



Minuetto. Allegro M.M. ♩ = 27



arco

p

[illegible]

99

p *crescendo* *f*

108

120

p *crescendo*

128

136

f

Adagio non troppo M.M. ♩ = 104

p

6

10

rf f

15

f *p*

20

f *f*

23

ff

25

f f rf f p

28

rf f p p

33

f p f p

38



41



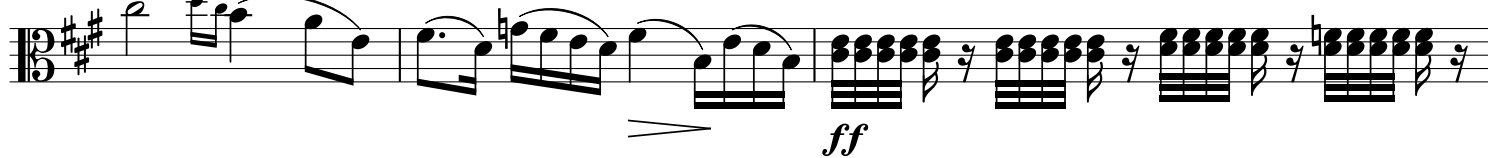
46



50



54



57



62



65



67



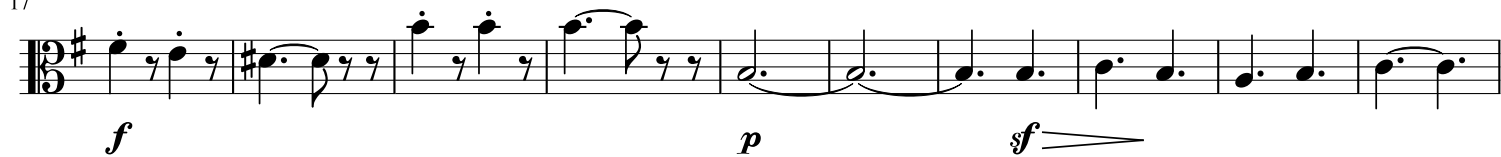
Allegretto M.M. ♩ = 112



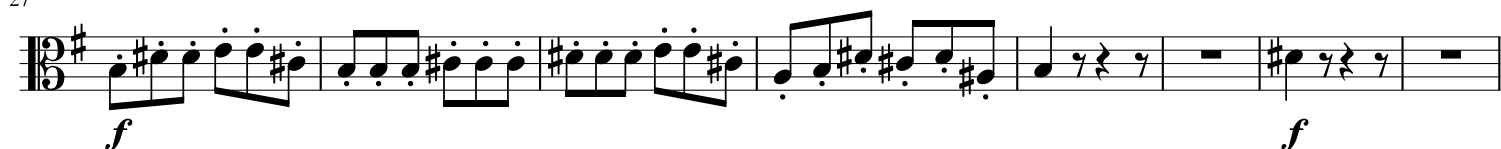
8



17



27



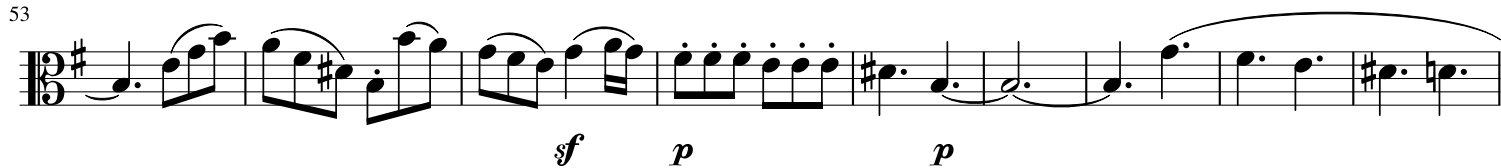
35



44



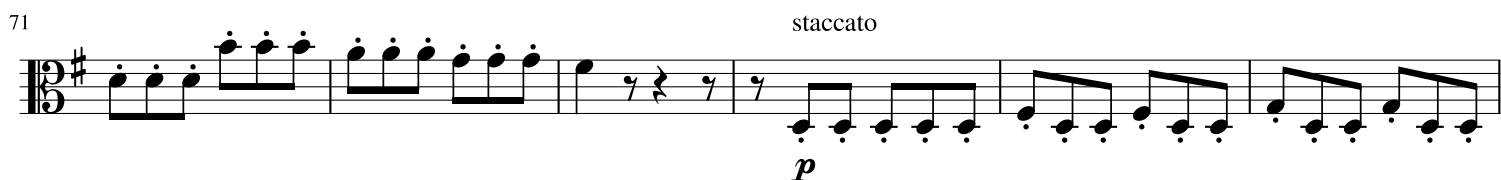
53



62



71



77



83



91



100



107



115



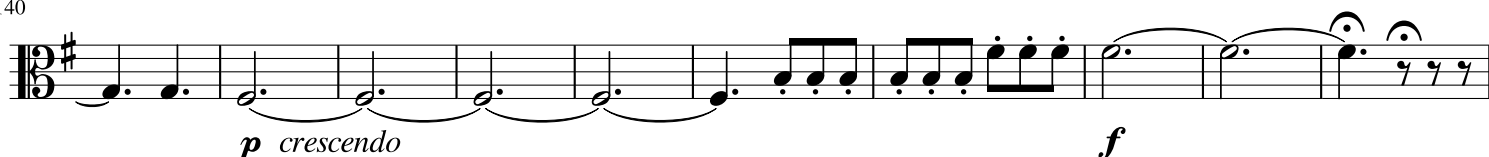
123



132



140



150



158



166



174



181



190



198



206



214



223



232



239



245



251



260



267



274



280



288

