

Quintets from Cantata 87.6
LET VOICE SOLO PARTS ALWAYS PREDOMINATE

J.S. Bach [arr. P. Lang] BWV 87.6

Aria for Strings, Tenor and Bc "Ich will leiden"

arr. in 5 parts: 1. and 2. Violin, 3. Viola, 4. Viola or Cello, 5. Cello

Vc. $\text{♩} = 66$

1 Violin bwv 87.6 s5

2 Violin bwv 87.6 s5

3 Viola bwv 87.6 s5

4 Viola for Tenor Solo
bwv 87.6 s5

4 Violoncello for Tenor Solo
bwv 87.6 s5

5 Violoncello for Bc
bwv 87.6 s5

Vln. 1

Vln. 2

Vla.

Vla.

Vc.

Vc.

Vln. 1

Vln. 2

Vla.

Vla.

Vc.

Vc.

A tempo

poco rit.

poco rit.

poco rit.

poco rit.

poco rit.

poco rit.

poco rit.

p

p

p

f

f

p

p

12

Vln. 1

Vln. 2

Vla.

Vla.

Vc.

Vc.

Measures 12-14 of the musical score. The first violin (Vln. 1) and second violin (Vln. 2) parts feature melodic lines with slurs and ties. The viola (Vla.) and violin (Vc.) parts in the treble clef have a rhythmic pattern of eighth and sixteenth notes. The violin (Vc.) part in the bass clef has a melodic line with slurs and ties.

15

Vln. 1

Vln. 2

Vla.

Vla.

Vc.

Vc.

Measures 15-17 of the musical score. The first violin (Vln. 1) and second violin (Vln. 2) parts feature melodic lines with slurs and ties. The viola (Vla.) and violin (Vc.) parts in the treble clef have a rhythmic pattern of eighth and sixteenth notes. The violin (Vc.) part in the bass clef has a melodic line with slurs and ties.

18

Vln. 1

Vln. 2

Vla.

Vla.

Vc.

Vc.

Measures 18-20 of the musical score. The first violin (Vln. 1) and second violin (Vln. 2) parts feature melodic lines with slurs and ties. The viola (Vla.) and violin (Vc.) parts in the treble clef have a rhythmic pattern of eighth and sixteenth notes. The violin (Vc.) part in the bass clef has a melodic line with slurs and ties.

21 **A tempo**

Vln. 1 *f* *tr*

Vln. 2 *poco rit.* *mf* *tr*

Vla. *poco rit.* *mf* *tr*

Vla. *poco rit.* *mf* *tr*

Vc. *poco rit.* *f*

Vc. *poco rit.* *f*

24

Vln. 1 *p*

Vln. 2 *p*

Vla. *p*

Vla. *f* *p* *tr*

Vc. *f* *tr*

Vc. *p*

27

Vln. 1

Vln. 2

Vla.

Vla.

Vc.

Vc.

30

Vln. 1 *f* *p* *p*

Vln. 2 *mf* *p* *p*

Vla. *mf* *p* *p*

Vla. *f* *p*

Vc. *f* *p*

Vc. *f* *p*

33

Vln. 1

Vln. 2

Vla.

Vla. *tr~*

Vc. *tr~*

Vc.

36

A tempo

Vln. 1 *f*

Vln. 2 *poco rit.* *mf* *mf*

Vla. *poco rit.* *mf* *mf*

Vla. *poco rit.*

Vc. *poco rit.*

Vc. *poco rit.* *mf*

40

Vln. 1

Vln. 2

Vla.

Vla.

Vc.

Vc.

Measures 40-42. Vln. 1 and 2 play a melodic line with slurs and ties. Vla. 1 and 2 are silent. Vc. 1 and 2 play a rhythmic accompaniment of eighth notes.

43

Vln. 1

Vln. 2

Vla.

Vla.

Vc.

Vc.

Measures 43-45. Vln. 1 and 2 play a melodic line with slurs and ties. Vla. 1 and 2 are silent. Vc. 1 and 2 play a rhythmic accompaniment of eighth notes. Measure 45 includes dynamics: *rit.*, *p*, *tr*, *p*.

1 Violin bwv 87.6 s5

Quintets from Cantata 87.6

LET VOICE SOLO PARTS ALWAYS PREDOMINATE

J.S. Bach [arr. P. Lang] BWV 87.6

Aria for Strings, Tenor and Bc "Ich will leiden"

arr. in 5 parts: 1. and 2. Violin, 3. Viola, 4. Viola or Cello, 5. Cello

Vc. $\text{♩} = 66$

f

A tempo

poco rit. p

A tempo

Tenor

f

tr

p *p*

A tempo

poco rit. *f*

rit. p

2 Violin bwv 87.6 s5

Quintets from Cantata 87.6

LET VOICE SOLO PARTS ALWAYS PREDOMINATE

J.S. Bach [arr. P. Lang] BWV 87.6

Aria for Strings, Tenor and Bc "Ich will leiden"

arr. in 5 parts: 1. and 2. Violin, 3. Viola, 4. Viola or Cello, 5. Cello

♩. = 66



7

A tempo



12



18

A tempo



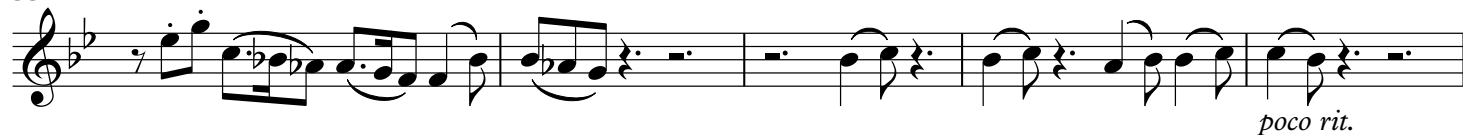
23



28



33



38

A tempo



43



Quintets from Cantata 87.6

LET VOICE SOLO PARTS ALWAYS PREDOMINATE

J.S. Bach [arr. P. Lang] BWV 87.6

Aria for Strings, Tenor and Bc "Ich will leiden"

arr. in 5 parts: 1. and 2. Violin, 3. Viola, 4. Viola or Cello, 5. Cello

$\bullet = 66$

7 **A tempo**

Measures 7-11 of the piece. Measure 7: Bass clef, B-flat key signature, quarter note G2, quarter note F2, quarter rest. Measure 8: Quarter note E2, quarter note D2, quarter note C2. Measure 9: Quarter note B1, quarter note A1, quarter note G1. Measure 10: Quarter note F1, quarter note E1, quarter note D1, with a trill (tr) over the D1. Measure 11: Half note C1, half note B1. Dynamics: *poco rit.* (deceleration) and *p* (piano).

12

Musical notation for measure 12, featuring a treble clef, a key signature of one flat (B-flat), and a 3/8 time signature. The melody consists of eighth and quarter notes with various rests and ties.

17

poco rit.

22 **A tempo**

mf *p* *p*

27

mf *tr*

32

p *p*

36 **A tempo**

poco rit. *mf* *mf*

42

rit. *p* *tr*

4 Viola for Tenor Solo bwv 87.6 s5

Quintets from Cantata 87.6

LET VOICE SOLO PARTS ALWAYS PREDOMINATE

J.S. Bach [arr. P. Lang] BWV 87.6

Aria for Strings, Tenor and Bc "Ich will leiden"

arr. in 5 parts: 1. and 2. Violin, 3. Viola, 4. Viola or Cello, 5. Cello

♩. = 66

Vln. 1

Bc

6

A tempo

poco rit.

f

10

14

tr

17

20

A tempo

poco rit.

24

f

tr

27

30

f

34

tr

37

A tempo

8

poco rit.

4 Violoncello for Tenor Solo bwv 87.6 s5

Quintets from Cantata 87.6

LET VOICE SOLO PARTS ALWAYS PREDOMINATE

J.S. Bach [arr. P. Lang] BWV 87.6

Aria for Strings, Tenor and Bc "Ich will leiden"

arr. in 5 parts: 1. and 2. Violin, 3. Viola, 4. Viola or Cello, 5. Cello

$\text{♩} = 66$

6

A tempo

poco rit.

f

10

14

tr

17

20

A tempo

poco rit.

24

f

tr

27

30

f

34

tr

37

A tempo

poco rit.

8

5 Violoncello for Bc bwv 87.6 s5

Quintets from Cantata 87.6

LET VOICE SOLO PARTS ALWAYS PREDOMINATE

J.S. Bach [arr. P. Lang] BWV 87.6

Aria for Strings, Tenor and Bc "Ich will leiden"

arr. in 5 parts: 1. and 2. Violin, 3. Viola, 4. Viola or Cello, 5. Cello

♩. = 66

4 *mf*

8 *A tempo*

12 *poco rit.* *p*

16

19 *A tempo*

23 *poco rit.* *f*

27 *p*

31 *f*

35 *p* *A tempo*

39 *poco rit.* *mf*

43 *rit.* *p*