

Streichtrio

L. v. Beethoven /
B. Brinkmann

8

15 *tr*

The musical notation for Example 15 is a single staff in treble clef with a key signature of one flat (B-flat). The melody begins with a trill (tr) on the first note, followed by a series of eighth and sixteenth notes. The notation includes various ornaments such as mordents and grace notes, and is characterized by frequent beaming of notes.

22



27

Measure 27: Treble clef, key signature of two flats (B-flat and E-flat). The melody consists of eighth and sixteenth notes. It begins with a slur over a group of notes, followed by another slur. There are ties between the second and third notes, and between the fourth and fifth notes. The measure ends with a double bar line and repeat dots.

34 *tr* *tr* *tr* 37

The musical notation for measures 34-37 is shown. Measure 34 begins with a treble clef and a key signature of one flat (B-flat). It contains three trills, each marked with 'tr'. The first trill is on a quarter note, and the second and third are on eighth notes. Measure 35 continues the trills. Measure 36 features a series of eighth notes. Measure 37 begins with a quarter note, followed by a measure with a quarter rest and an eighth note, and ends with a quarter note. The notation includes various musical symbols such as clefs, key signatures, trills, and rests.

44



50

Example 10 (continued)



Violine

Rondo. Allegro

Violin score for Rondo. Allegro, measures 1-46. The score is written in treble clef with a key signature of one sharp (F#) and a time signature of 6/8. The music features a variety of rhythmic patterns, including eighth and sixteenth notes, and rests. The key signature changes to two flats (Bb and Eb) at measure 20. The score is divided into measures 1-5, 5-10, 10-15, 15-20, 20-25, 25-30, 30-35, 35-40, and 40-46. The final measure (46) ends with a double bar line.

5

10

15

20

25

30

35

40

46



Violine

3



Streichtrio

Viola

Andante

nach der Klaviersonate op. 49 Nr. 1

L. v. Beethoven /
B. Brinkmann



9



17



22



28



35



42



48



53



59



66



73



81



86



91



96



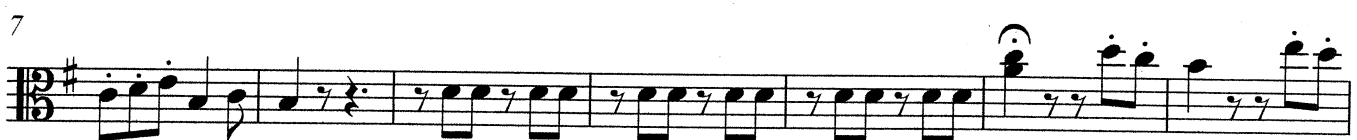
103

**Rondo. Allegro**

5



7



14



21



26



32



38



43



48



54



60



66



71



75



79



86



Viola

3

92



98



105



110



115



121



127



133



140



147



155



Streichtrio

Violoncello

Andante

nach der Klaviersonate op. 49 Nr. 1

L. v. Beethoven /

B. Brinkmann



Violoncello

73



82



89



96



103



Rondo. Allegro



106



111



117



124



131



137



143



149



156



160

