

Sonate in B-Dur
für 2 Violinen und Basso continuo
op.5 Nr.2

Arioso

Gottfried Finger

4

7

10

13

16

19

21

24

26

Adagio

The bass line of 'The Rose Tree' is written on a single staff in bass clef with a key signature of one flat (B-flat). The melody consists of the following notes: G2 (half note), A2 (quarter note), B-flat2 (quarter note), A2 (quarter note), G2 (quarter note), F2 (quarter note), E2 (quarter note), D2 (half note), C2 (half note), B-flat2 (quarter note), A2 (quarter note), G2 (quarter note), F2 (quarter note), E2 (quarter note), D2 (half note), C2 (half note). The piece ends with a double bar line and repeat dots.

Adagio

14 **Presto**

Largo

5

9

13

[illegible]

17

The first staff of music is written in bass clef with one flat (B-flat). It contains eight measures: Measure 1 has a quarter note G2; Measure 2 has a half note F2; Measure 3 has a quarter note E2; Measure 4 has a quarter note D2 tied to the next measure; Measure 5 has a quarter note C2; Measure 6 has a quarter note B1; Measure 7 has a half note A1; Measure 8 has a whole note G1. The piece ends with a double bar line and repeat dots.

21

25

28

31

The bass line of 'The Rose Tree' is written in 2/4 time on a single staff. It begins with a bass clef and a key signature of one flat (B-flat). The melody consists of four measures: the first measure has a half note G2 (one line below the staff) followed by two quarter notes G2 and F2; the second measure has a half note F2 followed by two quarter notes F2 and E2; the third measure has a half note E2 followed by two quarter notes E2 and D2; and the fourth measure has a half note D2 followed by two quarter notes D2 and C2. The notes are represented by black squares on the staff lines.

35

Musical notation for the bass line of 'The Rose Tree'. The key signature is one flat (B-flat). The melody consists of five measures: 1. A half note B-flat, followed by a quarter note G. 2. A half note F, followed by a quarter note E. 3. A half note D, followed by a quarter note C. 4. A half note B-flat, followed by a quarter note A. 5. A half note G, followed by a quarter note F. The piece ends with a double bar line.

40 **Allegro**

44



47



50



54



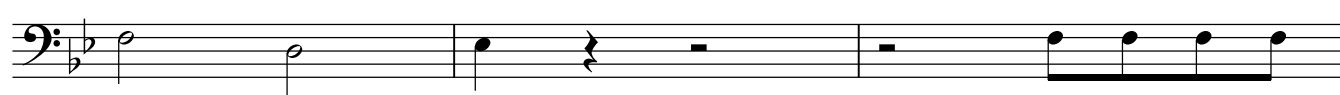
57



60



63



66



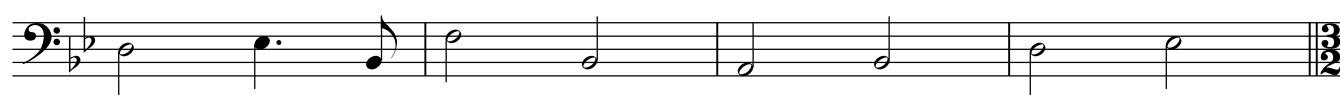
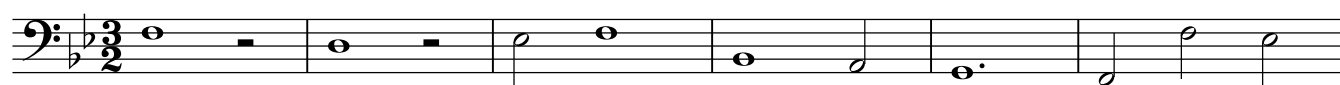
69



72



75

79 **Largo**

85

