

## Violin I

## Missa Brevis

N°1  
Kyrie

W.A. Mozart

Allegro

Violin I score for the first movement of Mozart's Missa Brevis, Kyrie. The score is written in G minor (three flats) and common time (C). It consists of ten staves of music, with measure numbers 5, 9, 13, 17, 21, 25, 29, 33, and 36 indicated at the beginning of their respective staves. The tempo is marked 'Allegro'. The dynamics are marked with *p* (piano) and *f* (forte). The score includes various musical notations such as eighth notes, sixteenth notes, and a trill (tr) in the first staff. The piece concludes with a double bar line at the end of the tenth staff.

N°2  
Gloria

Allegro

Violin I score for Gloria, N°2, by W.A. Mozart. The score is in 3/4 time, key of B-flat major, and consists of 57 measures. It features various dynamics (p, f) and articulations (tr, accents).

Measures 1-5: *p*

Measure 6: *f*

Measure 12: *f*

Measure 18: *f*

Measure 23: *p*

Measure 29: *f*

Measure 35: *f*

Measure 41: *f*

Measure 46: *p*

Measure 52: *p*

Measure 57: *f*

Violin I score for W.A. Mozart's Missa Brevis, measures 62-109. The score is written in treble clef with a key signature of two flats (B-flat and E-flat). The tempo is marked 'Allegretto' and the time signature is 3/8. The score includes dynamic markings: *p* (piano) and *f* (forte). The music features various melodic lines, including eighth and sixteenth notes, and rests. A fermata is present over the final measure (109).

Measures 62-67: *p* (piano) and *f* (forte) markings.

Measures 68-72: *p* (piano) marking.

Measures 73-77: *p* (piano) marking.

Measures 78-82: *p* (piano) marking.

Measures 83-88: *f* (forte) marking.

Measures 89-93: *p* (piano) marking.

Measures 94-99: *p* (piano) marking.

Measures 100-104: *f* (forte) marking.

Measures 105-108: *f* (forte) marking.

Measure 109: *f* (forte) marking.

N°3  
Credo

Allegro

*f*

4

*tr*

7

10

*tr*

13

16

*tr*

19

21

*f*

24

26

*tr*

*tr*

*Andante*

*p*

Violin I score for W.A. Mozart's Missa Brevis, measures 30-58. The score is written in G minor (three flats) and 2/4 time. The tempo is marked **Allegro** starting at measure 38. The key signature changes to E-flat major (two flats) at measure 41. The score includes various musical notations such as slurs, trills (tr), and dynamic markings (*p* for piano, *f* for forte). The piece concludes with a repeat sign and the instruction **V.S. !!** (Viva! Vivat!).

Measures 30-33: *f*

Measures 34-37: *p*

Measures 38-40: *p*, *f*, **Allegro**

Measures 41-42: *f*

Measures 43-45: *f*

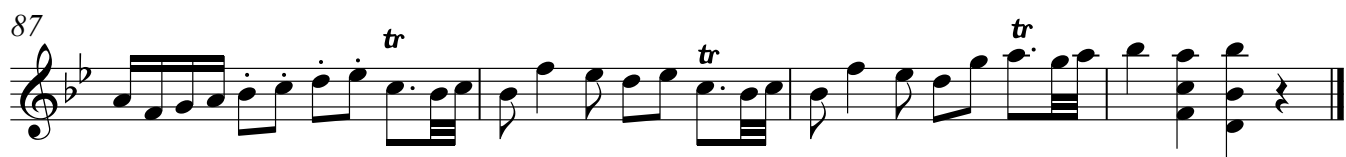
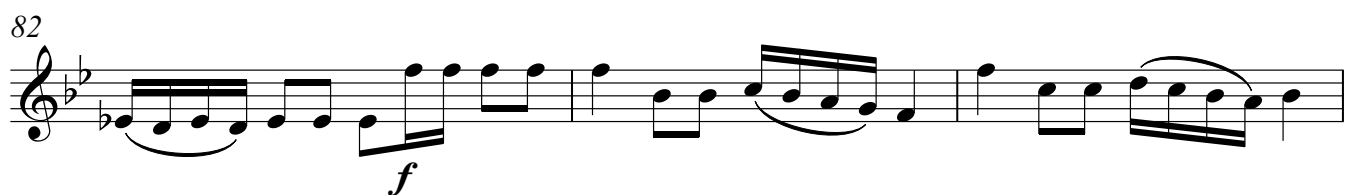
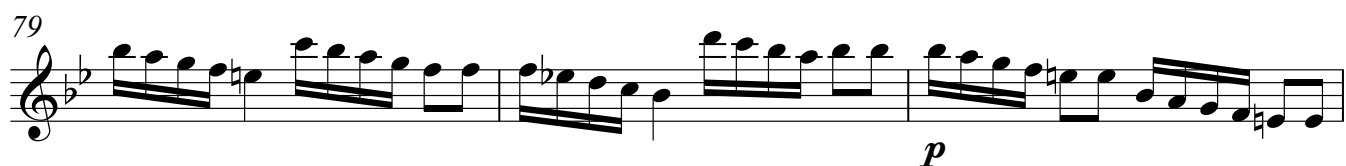
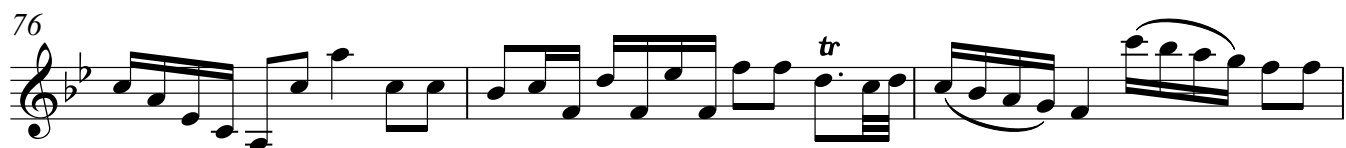
Measures 46-48: *f*

Measures 49-51: *f*

Measures 52-54: *f*

Measures 55-57: *p*, *f*

Measures 58-60: *f*, **V.S. !!**



N°4  
Sanctus

Andante

5

9

13

17

21

25

30

35

*p*

*f*

*tr*

*tr*

**Allegro**

Nº 5  
Benedictus

Andante



*p*

6

*tr*

12

17

22

27

33

38

3

3



44

49 **Allegro**

53

58

63

66

*f*

N° 6  
Agnus dei

Andante

*p* *f*

4 *p* *f*

8 *p* *f*

12 *p* *f* *p* *f*

16

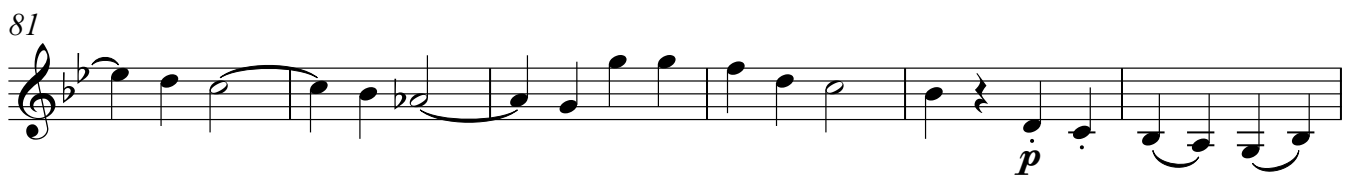
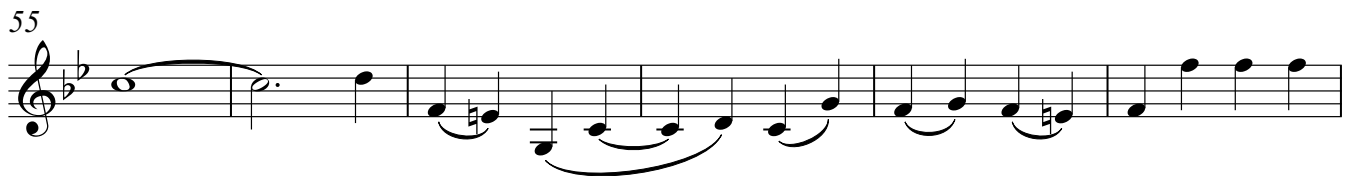
20 *p* *f* *p* *f*

24 *p* *f* *p* **Allegro**

29 *f*

35 *f* *p*

40 *f* *p* *f* *p*



99



105



110



115



121



127



132



137



142



148

*f* *p* *f* *p*

152

*f* *p* *f*

157

*f* *p*

163

*f* *p*

167

*p*

172

*f* *p*