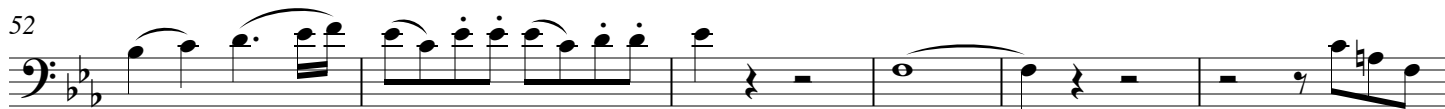


52



58



64



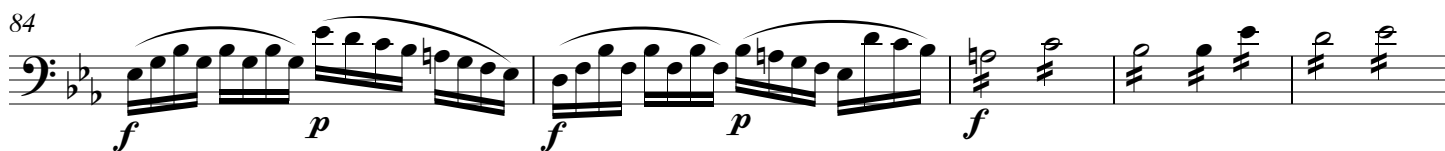
69



77



84



89



102



110



117



124



VIOLONCELLO

3

134

134

f *p*

139

139

146

140

The bass line continues with measures 140-145. Measure 140 has a whole rest. Measure 141 has a quarter rest followed by a quarter note G2. Measure 142 has a quarter rest followed by a quarter note A2. Measure 143 has a quarter rest followed by a quarter note B2. Measure 144 has a quarter rest followed by a quarter note C3. Measure 145 has a quarter rest followed by a quarter note D3. The line ends with a double bar line.

152

152

The musical score for the bass line of 'The Rose Tree' is written in 3/4 time. It begins with a treble clef and a key signature of one flat (B-flat). The melody starts on a whole note G2, followed by a half rest. The next measure contains a half note G2 and a quarter note A2, beamed together. This is followed by a half note Bb2 and a quarter note C3, also beamed together. The melody then continues with a half note D3 and a quarter note E3, beamed together. The final measure of the first line is a half note F3 and a quarter note G3, beamed together. The second line of the score begins with a half note G3 and a quarter note A3, beamed together. This is followed by a half note Bb3 and a quarter note C4, beamed together. The melody then continues with a half note D4 and a quarter note E4, beamed together. The final measure of the second line is a half note F4 and a quarter note G4, beamed together. The score is marked with a '3' above the first measure of the second line, indicating a triplet. The piece concludes with a double bar line.

161

[illegible]

167

Musical notation for the bass line of "The Rose Tree" in G minor, 3/4 time. The melody starts on G2, moves to A2, then Bb2, and continues with eighth and sixteenth notes.

174

174

182

182

182

cresc. *f* *p* *f* *p* *f* *p*

186

180

Example 10-10

Andante

Musical notation for the bass line of 'The Rose Tree'. The key signature is one flat (B-flat), and the time signature is 3/8. The notation includes a piano (*p*) dynamic marking, a fermata over a whole note, and a triplet of eighth notes. The melody is written on a single staff.

17

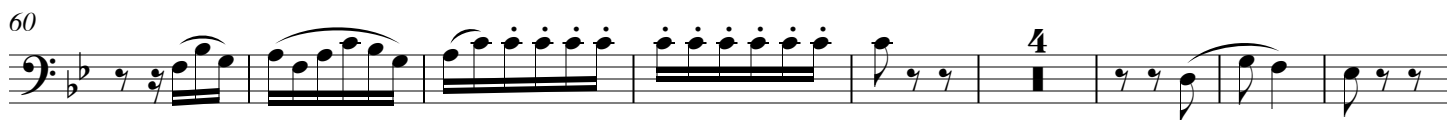
Musical notation for the bass line of 'The Rose Tree'. The key signature is one flat (B-flat). The melody starts with a quarter rest, followed by a quarter note G2, a half note F2-G2, and a half note E2-F2. A '4' is written above the staff, indicating a four-measure rest. The melody continues with a quarter note D2, a quarter note C2, a quarter note B1, a quarter note A1, a quarter note G1, a quarter note F1, a quarter note E1, a quarter note D1, a quarter note C1, a quarter note B0, and a quarter note A0. The melody ends with a half note G1-A1 and a half note F1-G1. The notation is written in a single system.

30

Musical notation for the bass line of 'The Rose Tree'. The key signature is one flat (B-flat). The melody consists of eighth notes, with some measures containing beamed eighth notes. The notation is written on a single staff.

37

The bass line is written on a single staff with a bass clef and a key signature of one flat (B-flat). It consists of 12 measures. The first measure has a 7/8 time signature. The first three measures contain eighth notes: G2, A2, Bb2 in the first; G2, A2, Bb2 in the second; and G2, A2, Bb2 in the third. The fourth measure contains two eighth notes: G2 and A2. The fifth measure is a whole rest. The sixth measure contains two eighth notes: G2 and A2. The seventh measure contains two eighth notes: G2 and A2. The eighth measure contains two eighth notes: G2 and A2. The ninth measure is a whole rest. The tenth measure contains two eighth notes: G2 and A2. The eleventh measure contains two eighth notes: G2 and A2. The twelfth measure is a whole rest.



RONDO
Allegro

