

Oboe 1

Sinfonia N°6 in F

KV 43 (1767)

arr. N P Thomas
chamber orchestra
rev.03

W. A. Mozart

Allegro

6 *f* *p*

14 [A]

23 [B] 9 [C] 6

41 *tr*

46

50 [D] 2

59 [E] 7 *f* *p* *f*

72 [F] 11 [G] 6

93 *tr*

98

2/4

Oboe 1

Andante

mp

7

fp

13 [A] 8 [B] 3

26 *tr* 2

31 [C] _{kl1} 2 *fp* *tr*

39 [D] *fp* *tr*

47 [E] *fp* *tr*

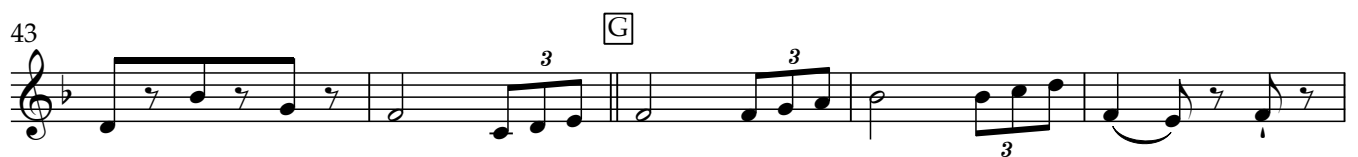
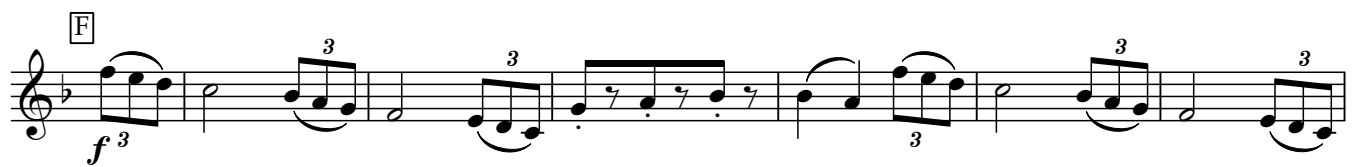
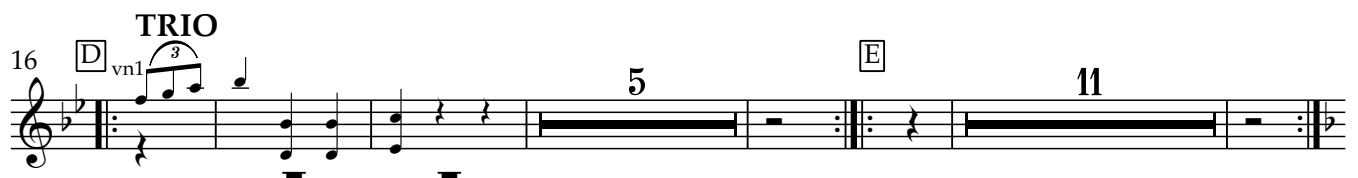
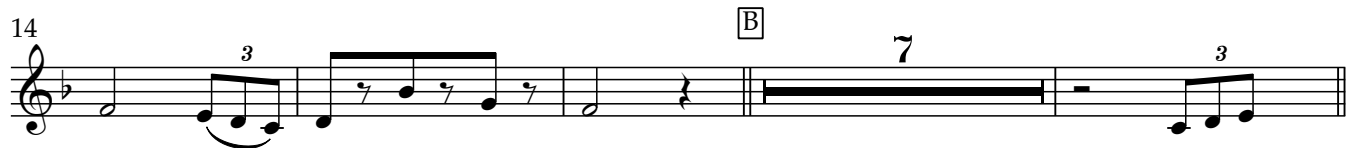
56 [F] 2 *tr*

65

3/4

Oboe 1

Menuetto



Oboe 1

Allegro

Musical score for "The Rose Tree" in G major, Op. 10, No. 1 by Robert Schumann. The score is for a single melodic line in treble clef, 2/4 time. It consists of 11 staves of music, each with a lettered section marker (A through K) and various dynamic markings (f, p, fp, f, p, f, fp, f, f, f, f). The key signature has one sharp (F#). The piece ends with a double bar line and repeat dots.