

Violine 1**Concerto a-moll
RV 536****Antonio Vivaldi****1. Allegro**

6

12

15

17

19

21

23

29

33

35

37

39

45

49

51

53

55

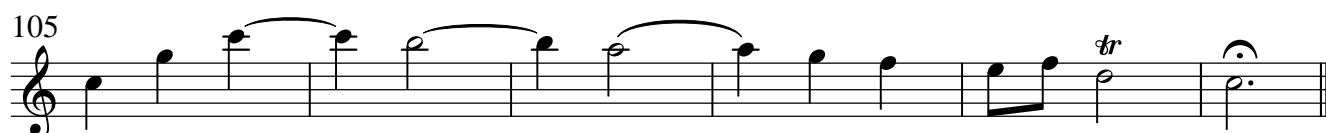
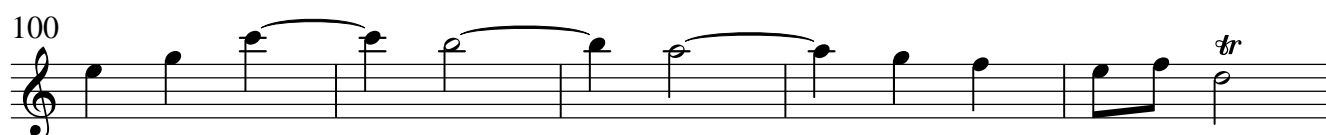
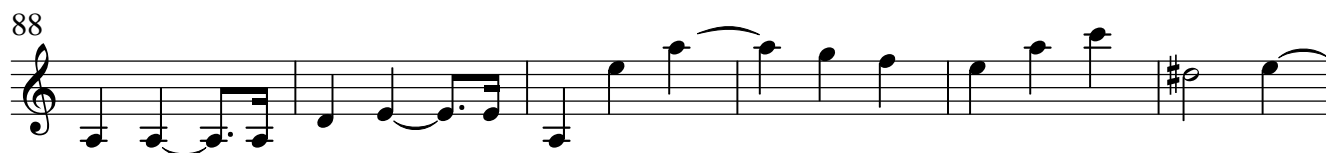
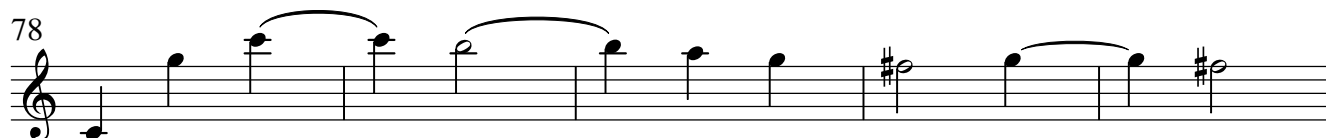
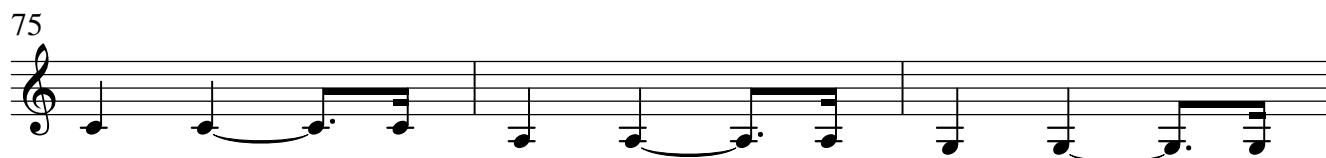
57

63

66

68

The image displays a musical score for Violin 1, spanning measures 37 to 68. The notation is written on a single staff in treble clef. The key signature is one sharp (F#), and the time signature is 4/4. The score features a variety of musical elements: sixteenth-note runs (measures 37-40, 51-54, 66-68), eighth-note patterns (measures 41-44, 55-56, 63-65), and quarter-note passages (measures 45-48, 57-62). There are several rests, including a full-measure rest in measure 42 and a half-measure rest in measure 68. The piece concludes with a final cadence in measure 68, marked by a double bar line.

2. Largo

3. Allegro

Violine 1

4

111

114

117

119

121

123

128

131

140

The musical score for Violine 1, measures 111 to 140, is written in treble clef with a key signature of one sharp (F#) and a 3/4 time signature. The tempo is marked 'Allegro'. The score consists of nine staves of music. Measures 111-113 show a melodic line with eighth and sixteenth notes. Measures 114-116 continue the melodic development. Measures 117-119 feature a more rhythmic passage with eighth notes. Measures 120-122 show a melodic line with eighth notes. Measures 123-125 include a triplet of eighth notes. Measures 126-128 show a melodic line with eighth notes. Measures 129-131 feature a melodic line with eighth notes and a quintuplet of eighth notes. Measures 132-134 show a melodic line with eighth notes. Measures 135-137 feature a melodic line with eighth notes. Measures 138-140 show a melodic line with eighth notes.

Violine 1

5

