

Klarinette in A
Klarinette in B
Cymbales antiques

LA DANSE



LE GAULOIS

A
ses Abonnés

1888



Arrangements pour flûte, clarinette,
harpe et quatuor à cordes de
Markus Riehl (Selection)

riehlma@gmx.de

Klarinette in A

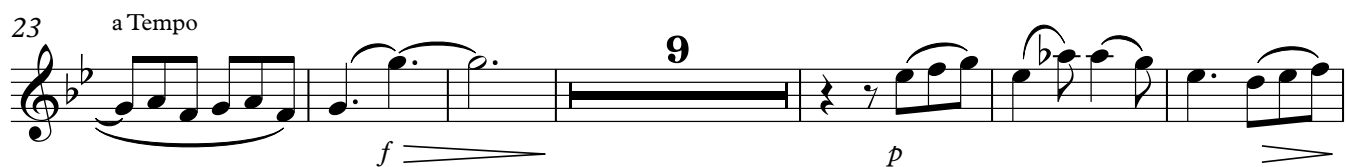
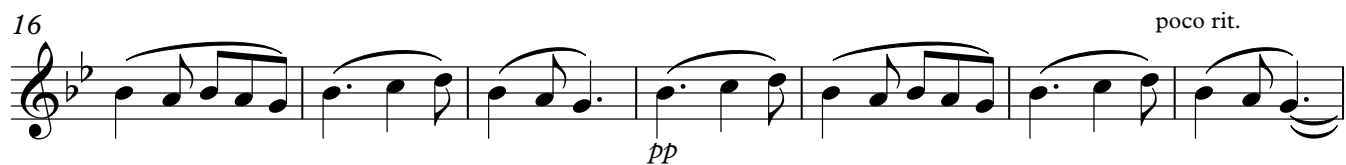
Klarinette in B

Cymbales antiques

La dérobee. Fantaisie sur u air breton

Ambroise Thomas

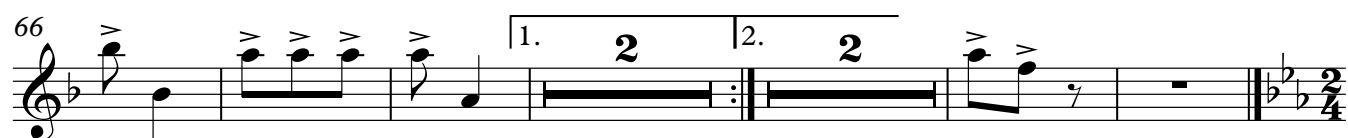
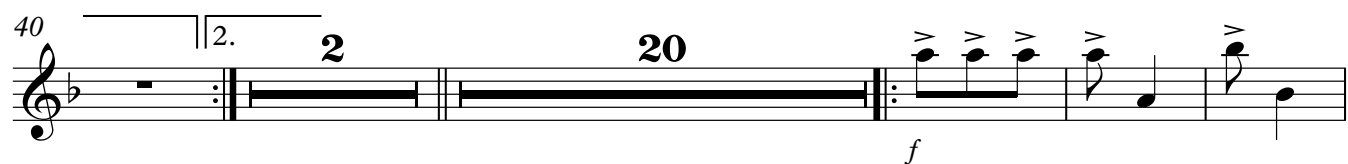
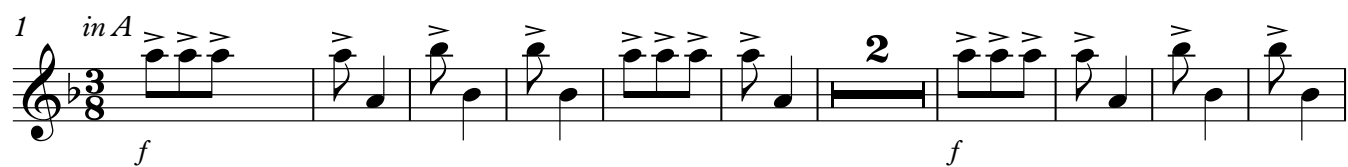
Allegretto ♩ = 72



Fandango

Très animé ♩ = 72

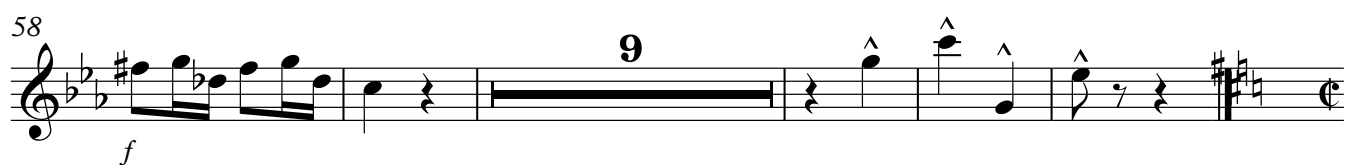
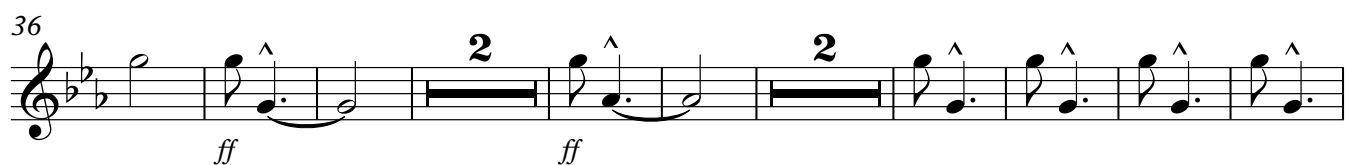
Jules Massenet



Bourrée

Allegro $\text{♩} = 72$

Camille Saint-Saëns



Rigaudon

Moderato ben marcato $\text{♩} = 56$ un poco animato $\text{♩} = 66$

Léo Delibes

1 *in B* **32**

p

36 *p* *mf*

42 *p*

48 **1° tempo** $\text{♩} = 56$ **15**

6/8

Saltarelle

Vivo $\text{♩} = 168$

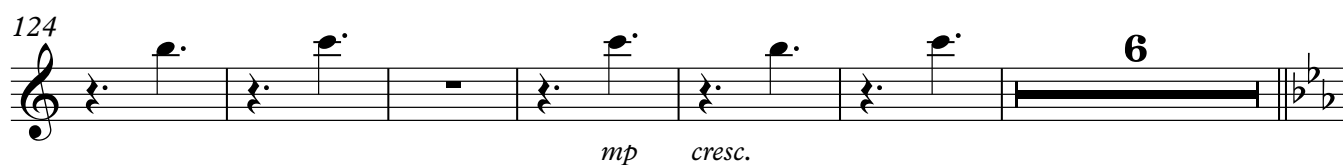
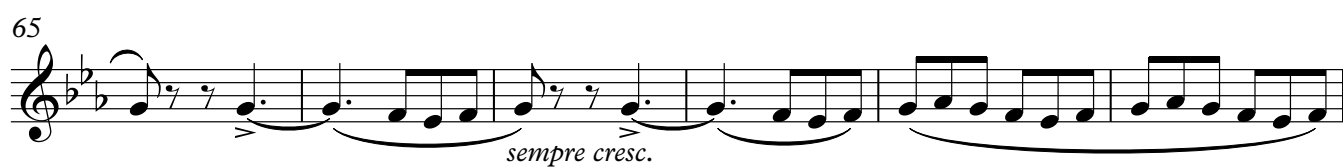
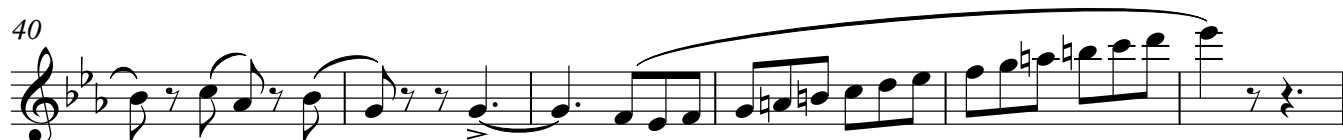
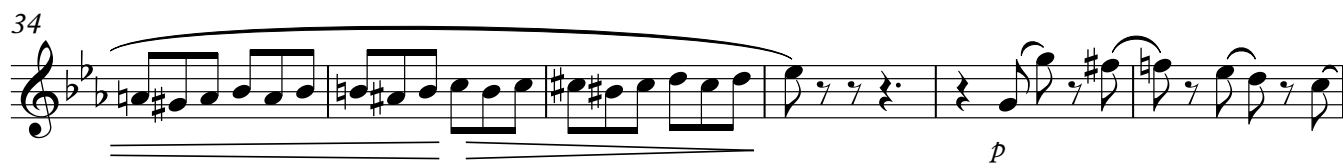
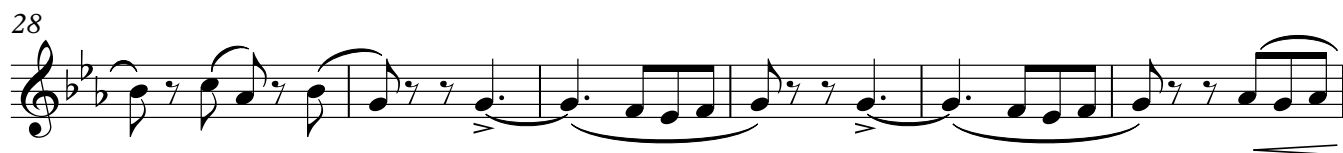
Ernest Guiraud

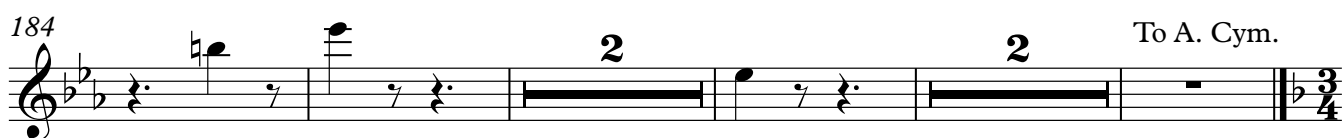
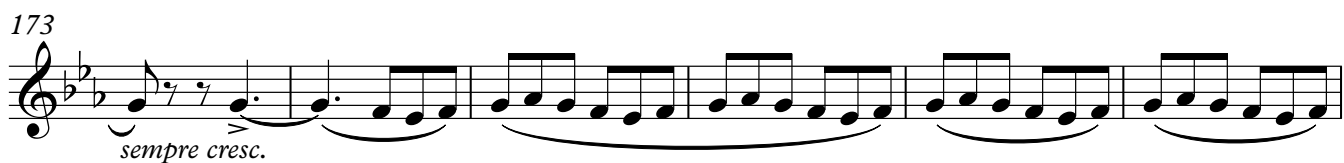
1 *in A* *p leggiero*

7

13 **4**

22 *mf* *p*





Pantomime

G. Salvayre

Valse-Mazurke. Allegro moderato $\text{♩} = 40$

1 *in A*

mf *cresc.* *p*

8

12 *p*

17

22 *p*

27

32 *cresc.*

38 *pp*

43

47 3 3

58

65



3

75 *Animato*

più f *cresc.*

[illegible]

82

Measure 82 of the musical score for 'The Rose Tree'. The notation is on a single staff in G major (one sharp) and 2/4 time. It begins with a quarter rest, followed by a quarter note G4. The next two measures contain eighth notes: G4-A4, B4-A4, and G4-F#4. The fourth measure contains a quarter note G4, followed by a quarter rest. The fifth measure contains a quarter note G4, followed by a quarter rest. The sixth measure contains a quarter note G4, followed by a quarter rest. The seventh measure contains a quarter note G4, followed by a quarter rest. The eighth measure contains a quarter note G4, followed by a quarter rest. The piece concludes with a double bar line, a key signature change to F major (two flats), and a 2/4 time signature.

Farandole

Allegro ♩ = 142

P. Véronge de la Nux

