

# Chorale no. 2 for organ

Flute

Op. posth.

Franck

**Maestoso** [~ ♩ = 72]

(Bn lead, to fore)

*p* (with Cl) *pp*

14 **A** (to fore) *p*

25 (Cl to fore) (to fore) (Cl to fore) **B** (Bn) *pp* 3 *pp*

35 (poco)

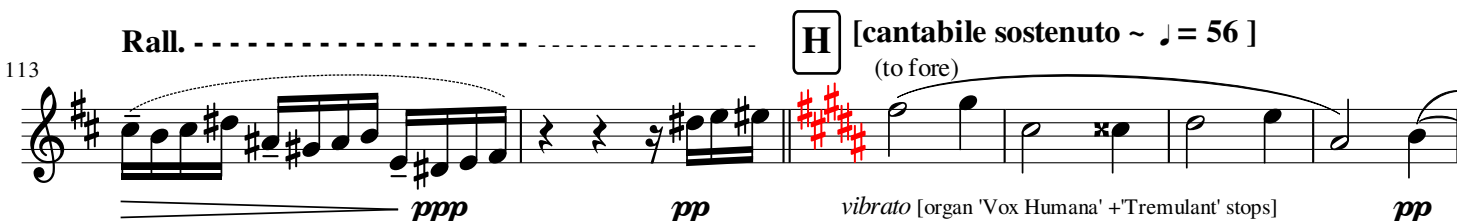
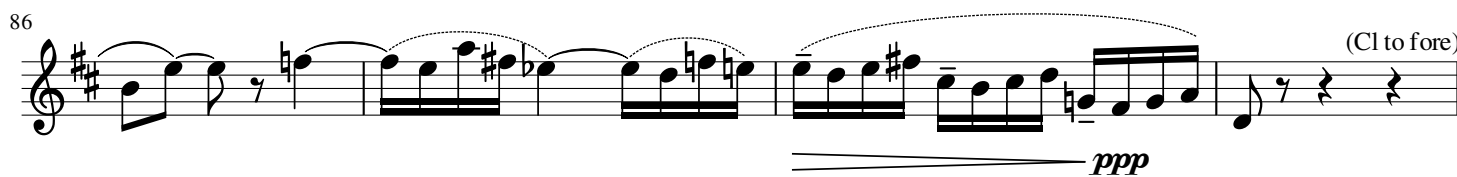
40 *cantabile* *mf* (to fore)

49 **C** (Hn) *mf* 3 3 3 3 3 3 3 3 3

53 3 3 3 3 3 3 3 3 3

57 (Cl) 2 (to fore) *f* *mf* [pochiss. rall.] **D** [a tempo] 15

[ - 15 - ] **E**



**I** **Largamente con fantasia [recitative]**

lead (*a piacere*)

127

**ff**

130

(CA lead, *colla parte*)

**pp**

**G P**

136

(lead)

**ff**

139

(CA)

142

**J** **Non troppo dolce**

rall. ....

**p**

**sfp**

**sfp**

**sfp**

**sfp**

**sfp**

**sfp**

**mf**

**p**

148

**K** **Tempo 1 ma un poco meno lento** **L** **M**

8 (to fore)

(Hn to fore)

**mp**

(Hn to fore)

164 5 (canon with Cl)

*p*

174

180 N (Hn to fore)

*p*

186 O (to fore)

195 P (CA & Hn to fore) *poco marcato*

*p* *ppp*

203

*mp*

210 Q (Fl & Bn to fore)

*ppp* *mp cantabile*

215

*pp* *p*

221 R

*mf sempre cresc.*

227 **S** *f*

235

238

240 *diminuendo*

244 **T** *poco marcato* *p* *p* *legato* *crescendo*

252 *sempre crescendo* *f* *ff* (Fl Bn to fore) **U** [Tempo 1]

262 **V** (Bn to fore) *meno f* *molto dim. e rall.*

272 **W** [cantabile sostenuto] *pp vibrato* *ppp*

280 *pp* *pp* *ppp* **Rall.**