

COLLECTION MUSICALE EN FORMAT NUMÉRIQUE
MUSIQUE INSTRUMENTALE DE STYLE CONCERTANT

Agostino Guerrieri (c. 1630 - c. 1684)

La Brignoli

Sonata a 2 Violini



Measures 1-3 of the musical score. The treble staff contains a continuous eighth-note melody in F# major. The bass staff provides a simple harmonic accompaniment with quarter notes. Measure 3 ends with a sharp sign (#) below the staff.

Measures 4-7 of the musical score. The treble staff continues the eighth-note melody. The bass staff continues the harmonic accompaniment. Measure 4 is marked with a '4' above the staff. Measure 7 ends with a sharp sign (#) below the staff.

Source : Sonate di violino a 1, 2, 3, 4 per chiesa, & anco aggiunta per camera... opera prima. -
Venezia, Francesco Magni detto Gardano, 1673 - RISM : G 4878

7

Measures 7-9 of a musical score. Measure 7: Treble clef has a quarter rest, a quarter note G4, and a quarter note A4; Bass clef has a quarter note C3, a quarter note D3, and a quarter note E3. Measure 8: Treble clef has a quarter note B4, a quarter note C5, and a quarter note D5; Bass clef has a quarter note F3, a quarter note G3, and a quarter note A3. Measure 9: Treble clef has a quarter note E5, a quarter note D5, and a quarter note C5; Bass clef has a quarter note B2, a quarter note A2, and a quarter note G2. Fingering numbers 4 and 3 are written below the bass clef in measure 9.

10

Measures 10-12 of a musical score. Measure 10: Treble clef has a quarter note D5, a quarter note E5, and a quarter note F5; Bass clef has a quarter note F3, a quarter note G3, and a quarter note A3. Measure 11: Treble clef has a quarter note G5, a quarter note A5, and a quarter note B5; Bass clef has a quarter note B2, a quarter note A2, and a quarter note G2. Measure 12: Treble clef has a quarter note C6, a quarter note B5, and a quarter note A5; Bass clef has a quarter note F3, a quarter note E3, and a quarter note D3. Fingering numbers 4 and 3 are written below the bass clef in measure 10. A sharp sign (#) is written below the bass clef in measure 11. A sharp sign (#) is written below the bass clef in measure 12.

13

piano

4 3

16

Largo

6 7 6 7 6 7 #6

21

4 3 #

This system contains measures 21 through 26. It features three staves: a treble staff, a grand staff (treble and bass), and a bass staff. Measures 21-24 are marked with a '4' and measure 25 with a '3'. Measure 26 has a sharp symbol (#). The notation includes various note values, rests, and accidentals.

27

5 6 # 4 3

This system contains measures 27 through 32. It features three staves: a treble staff, a grand staff (treble and bass), and a bass staff. Measures 27-28 are marked with a '5' and measure 29 with a '6'. Measure 30 has a sharp symbol (#), and measures 31-32 are marked with a '4' and measure 32 with a '3'. The notation includes various note values, rests, and accidentals.

31

Three staves of music. The top staff is in treble clef, the middle in treble clef with a key signature of one sharp (F#), and the bottom in bass clef. Measure 31: Treble has an eighth rest followed by eighth notes G4, A4, B4, C5, D5, E5, F#5, G5; Bass has a half note F#3. Measure 32: Treble has eighth notes G5, F#5, E5, D5, C5, B4, A4, G4; Bass has a half note F#3. Measure 33: Treble has eighth notes G4, A4, B4, C5, D5, E5, F#5, G5; Bass has a half note F#3. Measure 34: Treble has a half note G5, quarter note F#5, quarter note E5, quarter note D5, quarter note C5, quarter note B4, quarter note A4, quarter note G4; Bass has a half note F#3.

35

Three staves of music. The top staff is in treble clef, the middle in treble clef with a key signature of one sharp (F#), and the bottom in bass clef. Measure 35: Treble has eighth notes G4, A4, B4, C5, D5, E5, F#5, G5; Bass has a half note F#3. Measure 36: Treble has eighth notes G5, F#5, E5, D5, C5, B4, A4, G4; Bass has a half note F#3. Measure 37: Treble has eighth notes G4, A4, B4, C5, D5, E5, F#5, G5; Bass has a half note F#3. Measure 38: Treble has a half note G5, quarter note F#5, quarter note E5, quarter note D5, quarter note C5, quarter note B4, quarter note A4, quarter note G4; Bass has a half note F#3.

46 *Adagio*

This musical system contains measures 46 through 53. It is written for three staves: two treble staves and one bass staff. The key signature has one sharp (F#) and the time signature is common time (C). The melody in the upper staves is characterized by long, flowing lines with many ties. The bass staff provides a steady accompaniment of half notes. Below the bass staff, there are fingering numbers: # 5, # 5, # 6, and 4 3, corresponding to measures 48, 49, 50, and 51 respectively.

54 *Allegro*

This musical system contains measures 54 through 57. It is written for three staves: two treble staves and one bass staff. The key signature has one sharp (F#) and the time signature is common time (C). The tempo is marked 'Allegro'. The melody in the upper staves is more rhythmic and active, featuring eighth and sixteenth notes. The bass staff continues with half notes. Below the bass staff, there are five sharp signs (#) corresponding to measures 54, 55, 56, 57, and the final measure of the system.

56

Measures 56-57 of a musical score. The top staff (treble clef) contains a complex melodic line with many beamed sixteenth notes and some accidentals. The middle staff (treble clef) contains a similar melodic line. The bottom staff (bass clef) contains a simple bass line with quarter notes. Below the bottom staff, there are fingering numbers: #6, #, #, ♭, and #6 5.

#6 # # ♭ #6 5

58

Measures 58-59 of a musical score. The top staff (treble clef) contains a complex melodic line with many beamed sixteenth notes and some accidentals. The middle staff (treble clef) contains a similar melodic line. The bottom staff (bass clef) contains a simple bass line with quarter notes. Below the bottom staff, there are fingering numbers: ♭, #, ♭, 4 3, ♭, #, ♭, 4 3. The word "piano" is written below the middle staff in measures 58 and 59.

piano

piano

♭ # ♭ 4 3 ♭ # ♭ 4 3

Agostino Guerrieri (c. 1630 - c. 1684)

La Brignoli

Sonata a 2 Violini

1. Parte

3

6

9

12

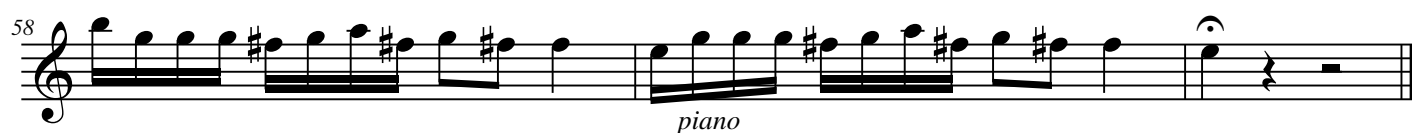
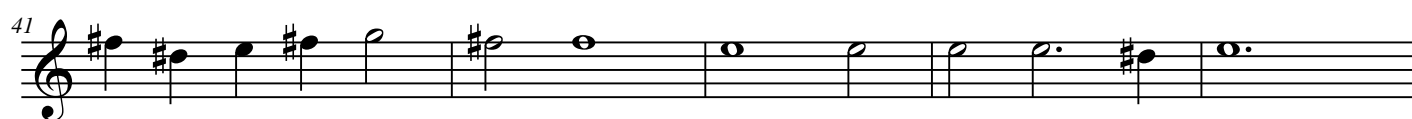
piano

Largo

16

20

26



Agostino Guerrieri (c. 1630 - c. 1684)

La Brignoli

Sonata a 2 Violini

2. Parte

4

7

4

13

piano

16

Largo 9

29

34

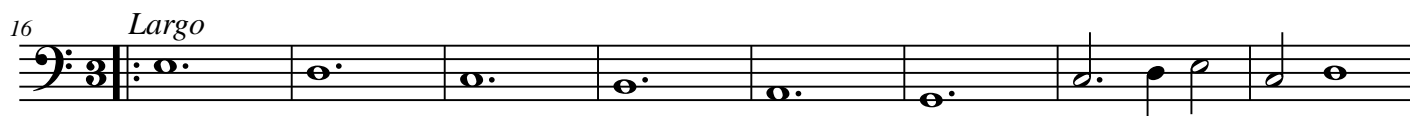
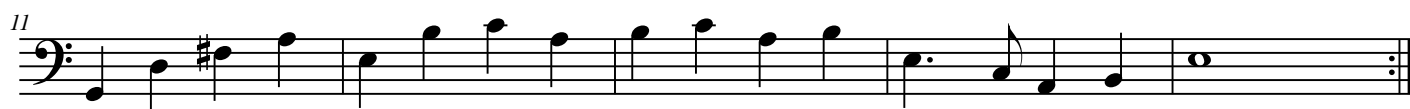
38

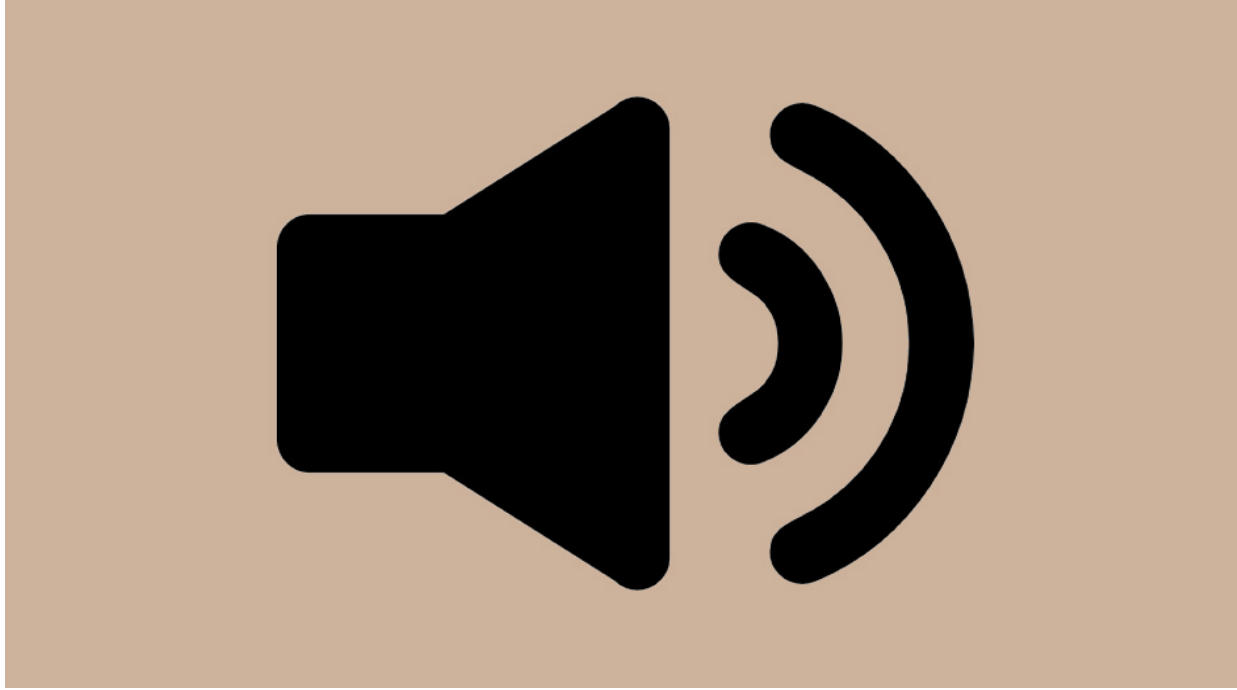
41

Agostino Guerrieri (c. 1630 - c. 1684)

La Brignoli

Sonata a 2 Violini





Cliquez sur l'icône pour accéder à des enregistrements sonores

Click on the icon to access sound recordings