

Aequale Sonatina

for four identical Instruments

Stefano Paparozzi

I. Ostinato

$\text{♩} = 180$ non stacc.

mf

5 *sim.*

9 *mp*

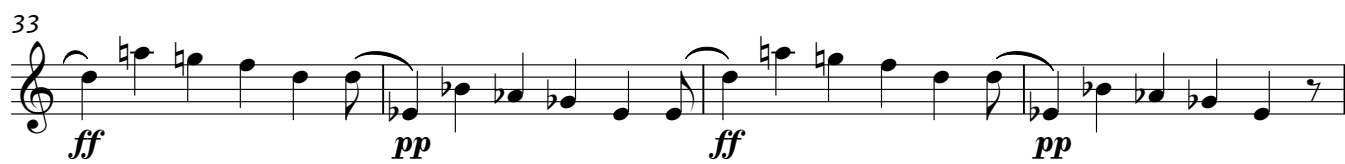
13 *f*

17 *mp* *f*

21 *mp* *f*

25 *mp*

29 *pp*



II. Lament

♩=60

pp (sim.)

play this portamento (always on the last quarter) if the chosen instrument can do it

4 **f** **pp**

7 **f** **pp**

10 **f**

13

III. Gigue

♩=100

1. **f**
2. **pp**

dim.
cresc.

9

15 **pp**
f

22

sfzpp
ff non dim.!

sfzpp
ff non dim.!

32

sfzpp
ff non dim.!

ff non dim.!
sfzpp

42

f
p

49

f
p

57

pp
pp

66

f
f

74

p
p

82

f
p

ff
ff