

С. Рахманинов.

Тромба III alto
in F

167/3 кп Три чesкие песни.

I.

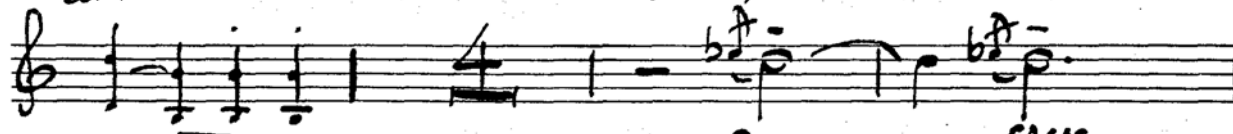
Moderato (alla breve)

Allegro assai



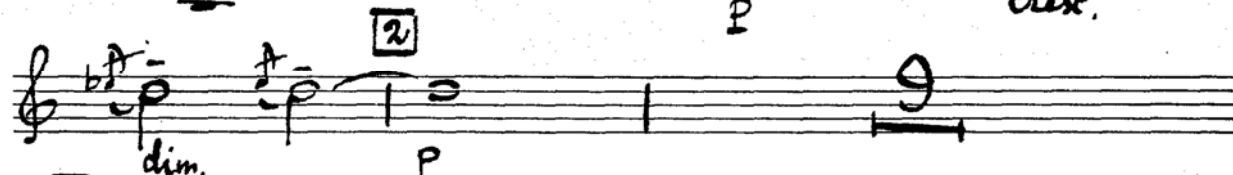
Cor. I. II.

con sord.



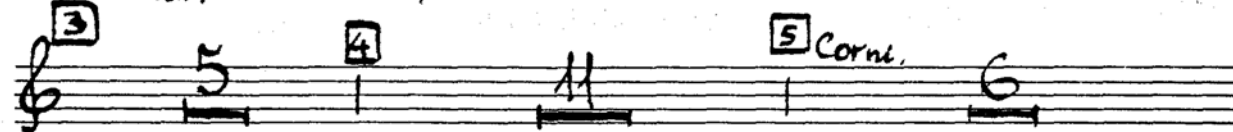
p

cresc.

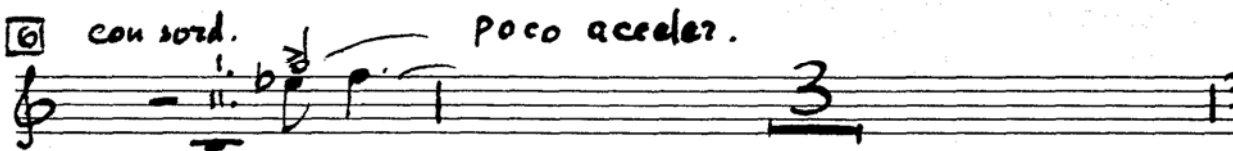


dim.

p



5 Corni.



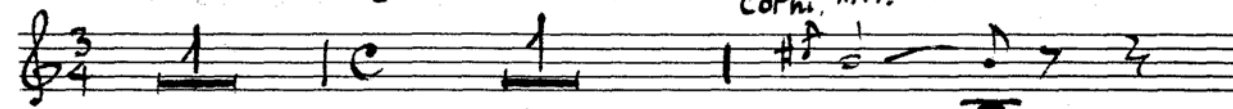
con sord.

poco accel.

f

più vivo

Corni, II. IV.



2 Senza

p *mf* *p* *cresc.* *f*

dim. rit. *Moderato*

allarg. *Corn* *Tempo I (poco meno mosso)*

Piu mosso

9 10 11

in F. II

Largo Sola *a tempo*

12 13 14

Tr. ne

in F. Solo Sord 15 16

Tr. bell. 17

4.

24

in F .

[illegible]

25

Handwritten musical notation for the first staff of 'The Rose Tree'. The staff is in treble clef and contains four measures of music. The first measure has a quarter rest followed by a quarter note G4 with a sharp sign and a 'mf' dynamic marking. The second measure has a quarter rest followed by a quarter note A4 with a sharp sign. The third measure has a quarter rest followed by a quarter note B4. The fourth measure has a quarter rest followed by a quarter note C5 with a sharp sign.

[illegible]

con sord.

con sord.



26

zit.

27

a temp

25

29

12 21 Cor. 1.

31 Cor. 1.

32

33

p leggiero

[illegible]

34

35

Meno mosso

1. II.

6

2

5

rit.

a tempo

23 марта 1938г.

1. Селиван

2. Наизум

3. Третьяков

4. Колосов

и другие

ff