

Violin I

Geistliches Lied

Johannes Brahms
(arr. Gotham)Langsam, [$\text{♩} = \text{c. } 60$]

4 *p e dolce* *soli* V

8

12

19 *p e dolce* *soli* V

23 *mf* *f* *p* *soli* V 5

31

35

39 *p*

43

47

53 2

58 *p* *f* *poco a poco dim.*

63 [poco rall] [poco meno]

Violin II

Geistliches Lied

Johannes Brahms
(arr. Gotham)

Langsam, [♩ = c. 60]

p e dolce

soli

6

11

18 **2** **4** *pp e dolce* *mf* *div.*

28 *(mf)* *p*

32 *p*

36 *p*

41

46

51 **4** *p*

59 *f* *poco a poco dim.*

63 *[poco rall]* *[poco meno]*

Viola

Geistliches Lied

Johannes Brahms
(arr. Gotham)

Langsam, [♩ = c. 60]

p e dolce

soli

6

11

18

pp e dolce

23

4

soli

mf

f

mf

30

(tutti)

p

34

p

39

44

51

p

p

56

f

62

poco a poco dim.

[poco rall]

[poco meno]

Geistliches Lied

Johannes Brahms
(arr. Gotham)

Langsam, [♩ = c. 60]
soli

p e dolce

p

p e dolce

5

soli

p

10

17

p

pp e dolce

22

mf

mf (poco)

(poco)

29

soli

p

p

34

p *p* *p*

39

p

44

p

51

p non cresc.

57

p *f* *mf*

61

poco a poco dim. *poco a poco dim.* *f*

64

[poco rall] *[poco meno]*

Geistliches Lied

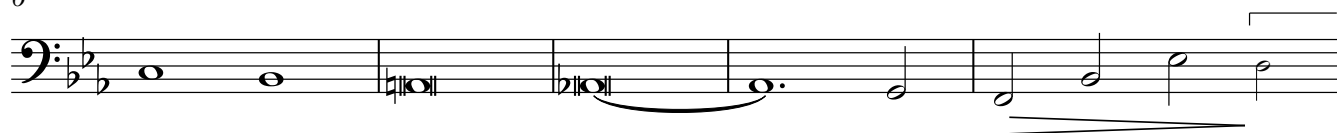
Double Bass

Johannes Brahms
(arr. Gotham)

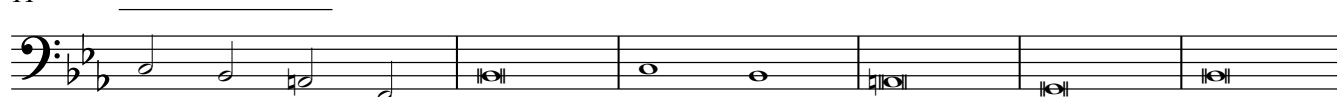
Langsam, [♩ = c. 60]



6



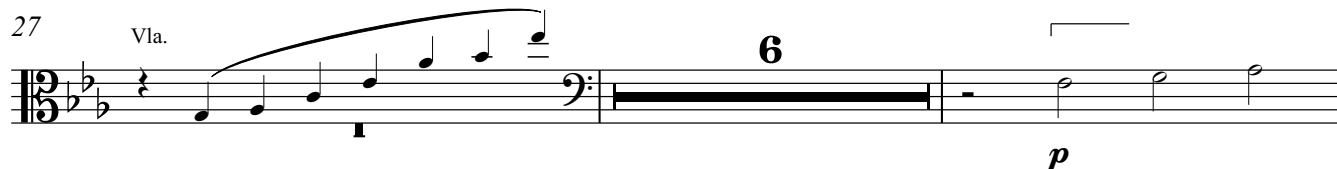
11



17



27



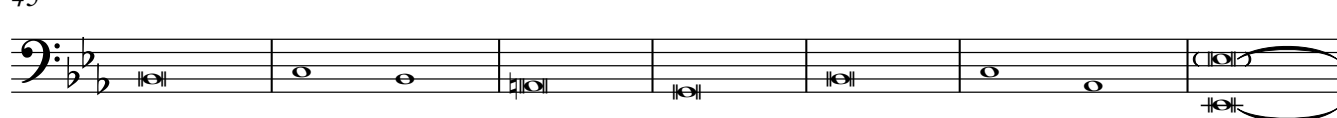
35



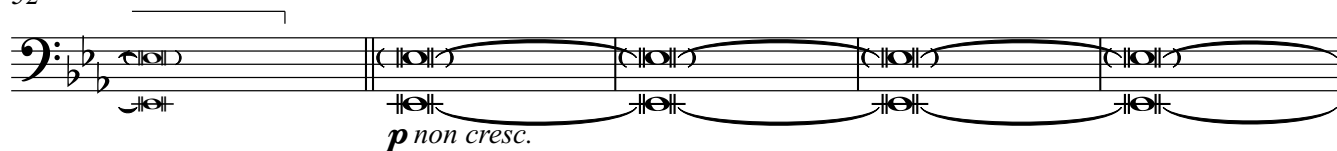
40



45



52



57



63

