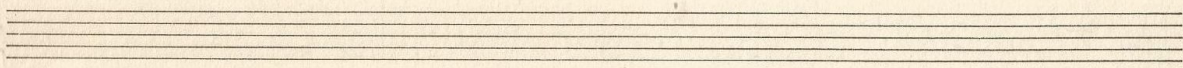
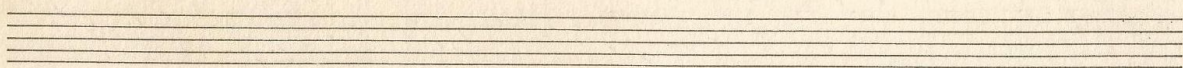
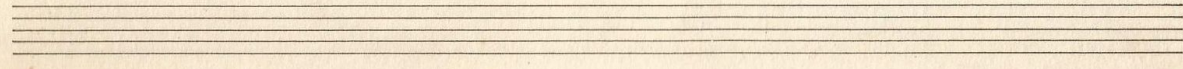
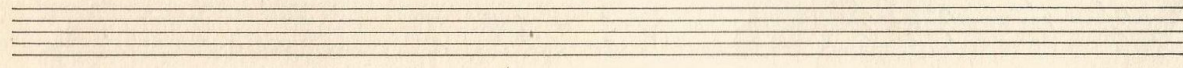
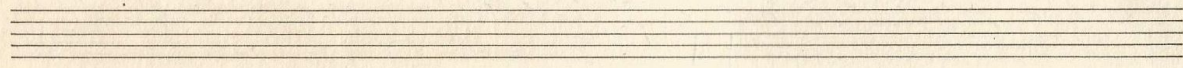
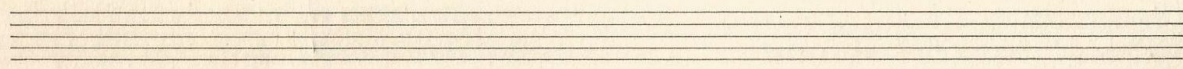
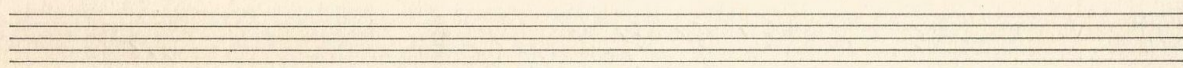
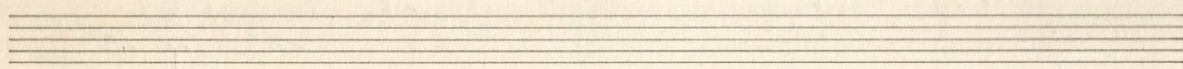
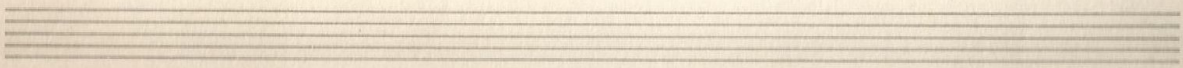
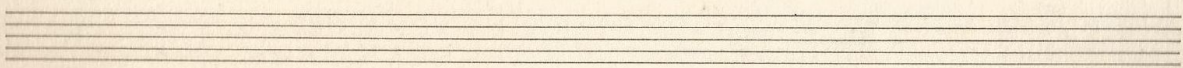
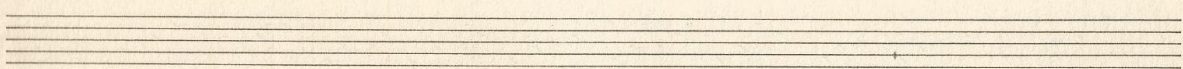
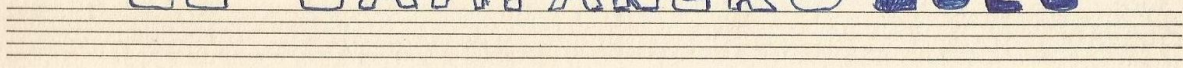


- El Recreo
- El Molino
- El viaje de Penquin
- El acordeón del abuelo



EL - CAMPANERO - LOCO



CAMPANERO LOCO

Carmen Barradas
Mont. - 1934

Allegro

Handwritten musical notation for the first system. The top staff is in treble clef with a key signature of three flats (B-flat, E-flat, A-flat) and a 4/12 time signature. It features a melodic line with slurs and dynamic markings 'MF' and 'F'. The bottom staff is in bass clef with a 2/4 time signature and contains a simple accompaniment.

Handwritten musical notation for the second system. The top staff is in treble clef with a 4/8 time signature, featuring a complex melodic line with many slurs and a dynamic marking of '40'. The bottom staff is in bass clef with a 2/8 time signature and contains a rhythmic accompaniment.

Handwritten musical notation for the third system. The top staff is in treble clef with a 4/4 time signature, featuring a melodic line with slurs, a '3V' marking, and dynamic markings 'FF rit' and 'FFF'. The bottom staff is in bass clef with a 4/4 time signature and contains a rhythmic accompaniment.

Handwritten musical notation for the fourth system. The top staff is in treble clef with a 4/4 time signature, featuring a melodic line with many slurs and a dynamic marking of 'MF'. The bottom staff is in bass clef with a 4/4 time signature and contains a rhythmic accompaniment.

Revisión y transcripción
de *Teuffenkröze*
1971

FIM