

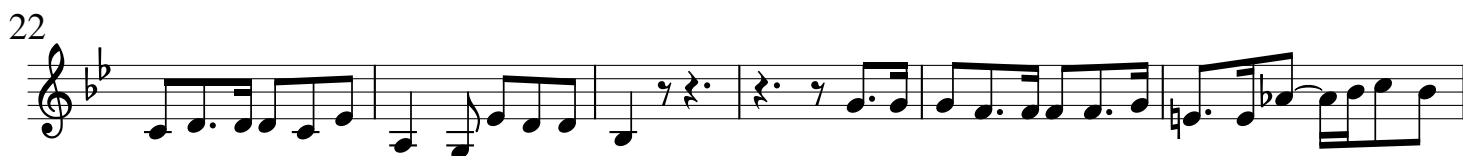
Violino III
(Viola)

Rodrigo-Suite

Georg Friedrich Händel
HWV 5

$\text{♩} = 100$

OUVERTURE



$\text{♩} = 100$

Lentement



GIGUE

10

19

SARABANDE

11

22

$\text{♩} = 190$

MATELOT

7

15

24

$\text{♩} = 108$

MENUET I

11

21

$\text{♩} = 190$

Violino III (Viola)

BOURRÉE



7



16



25



[RIGAUDON]



8



15



23



$\text{♩} = 108$

MENUET II



10



20



Violino III (Viola)

PASSACAÏLLE

11

16

2

38

30

77

86

96

106

2

116

125

134

143

153

163

172