

Clarinet 1 in A

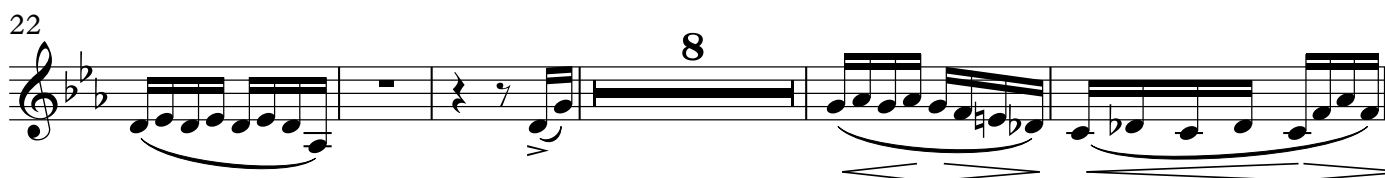
# Variations on a theme of Paganini

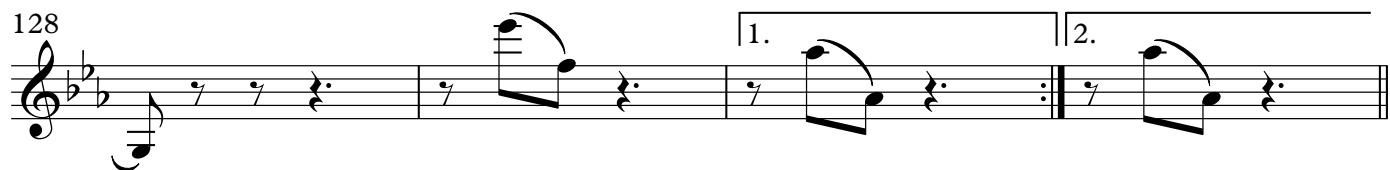
Set 1

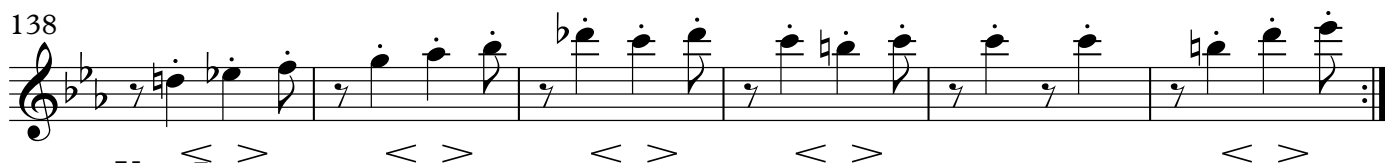
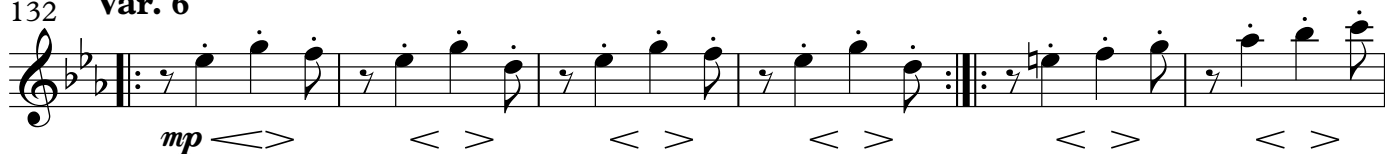
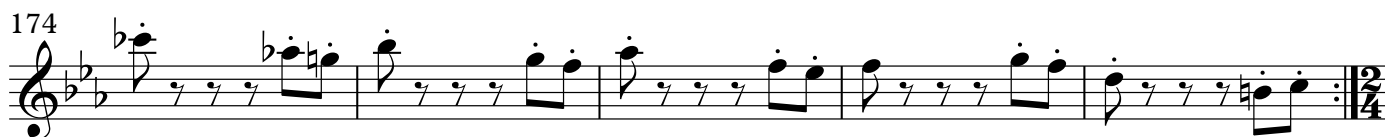
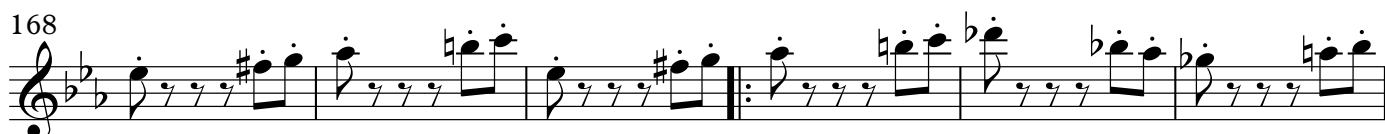
Brahms/Johnson

## Thema

1 Non troppo presto [♩=110]





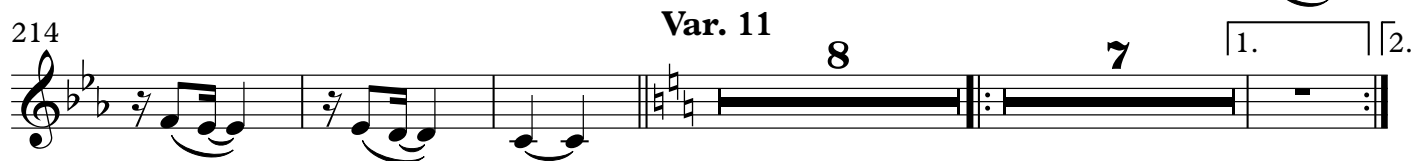
132 **Var. 6**162 **Var. 8**179 **Var. 9**



204



214



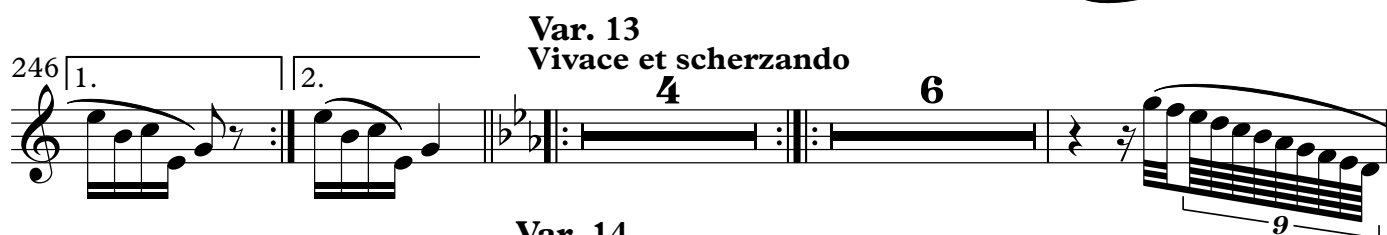
233



240



246



259



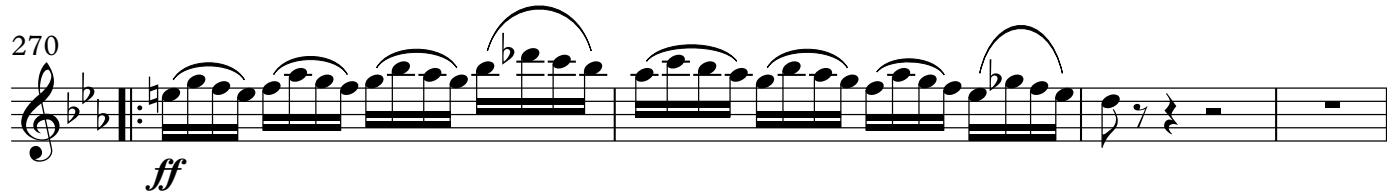
263



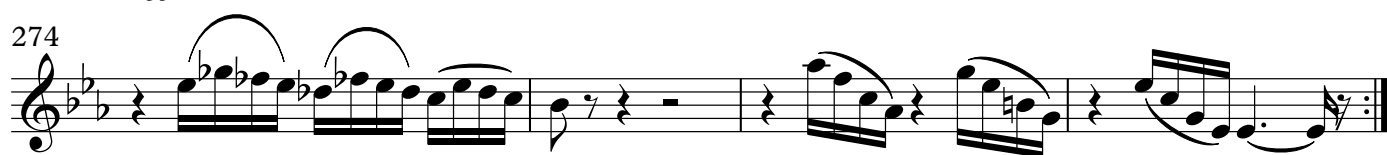
267



270

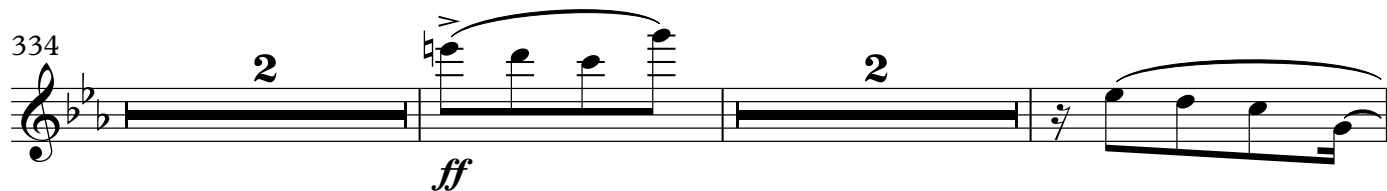
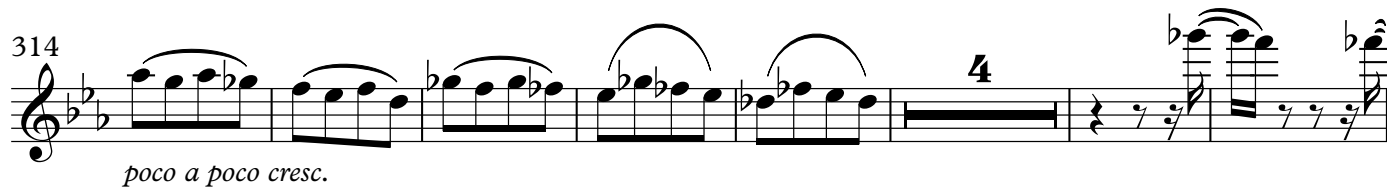
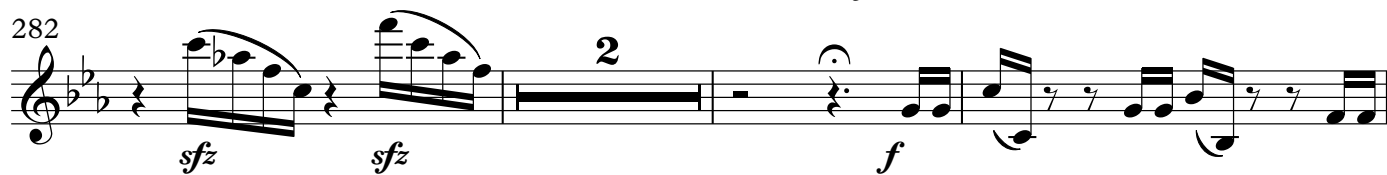


274



Clarinet 1 in A

5



Clarinet 2 in A

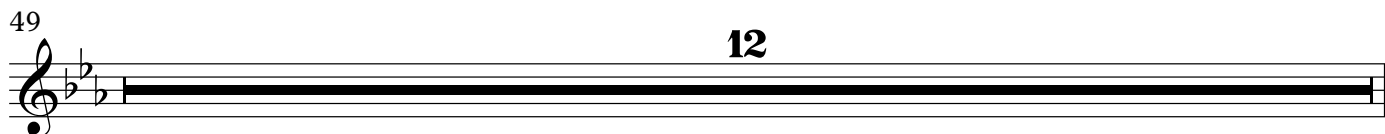
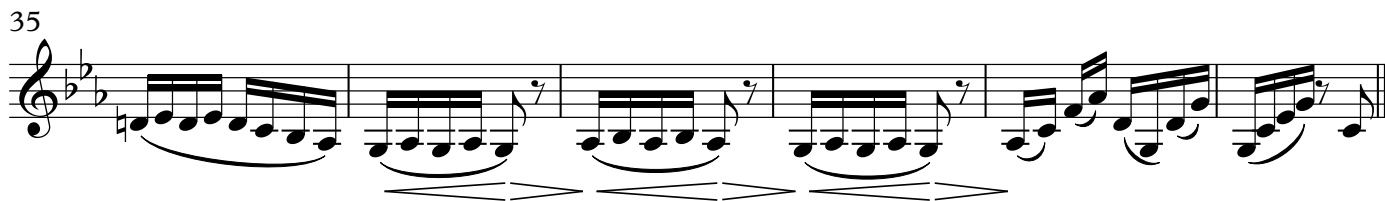
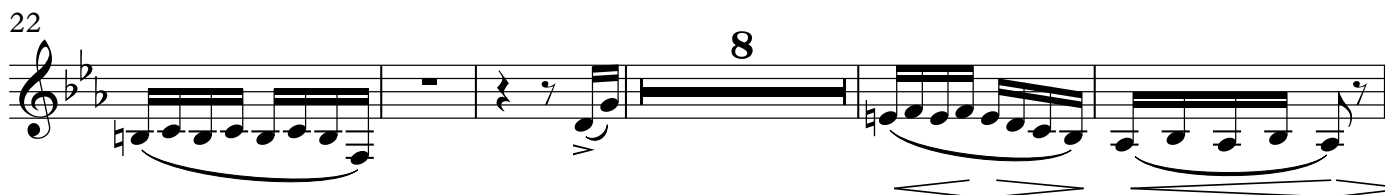
# Variations on a theme of Paganini

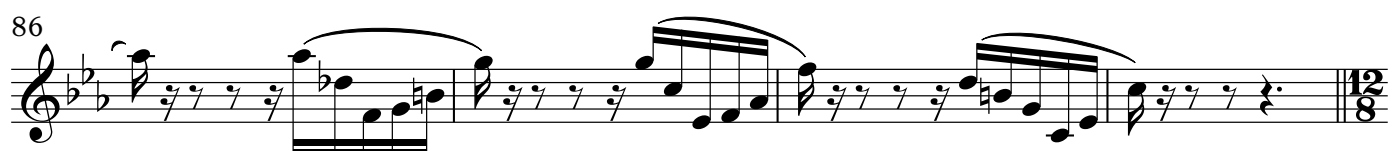
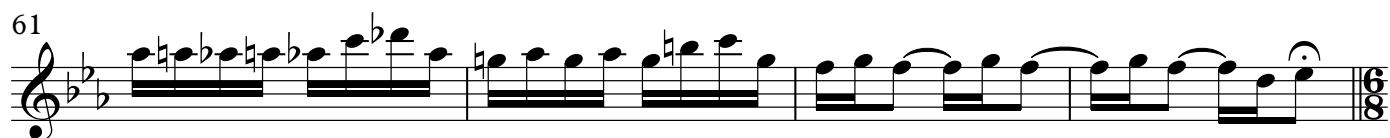
## Set 1

Brahms/Johnson

### Thema

1 Non troppo presto [ $\text{♩} = 110$ ]





137

< > < > < > < > < >

143 **Var. 7** 5 *f*

153 3 1.

161 2. **Var. 8** *f*

167

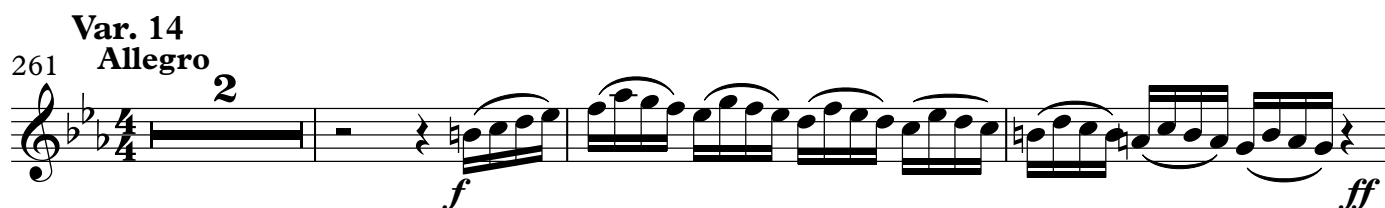
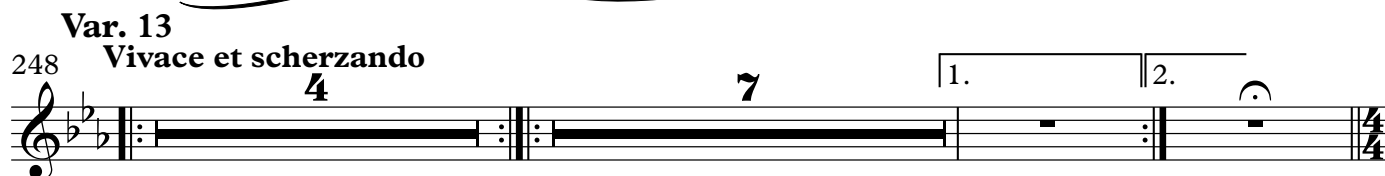
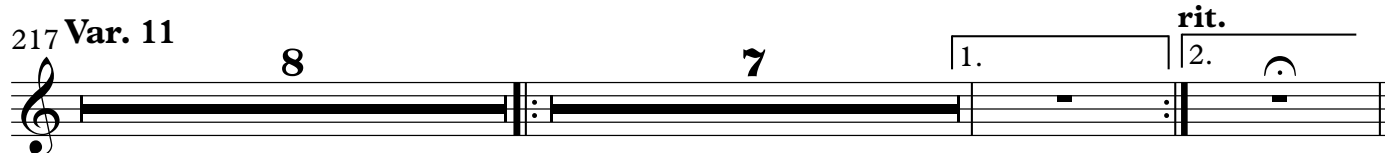
173

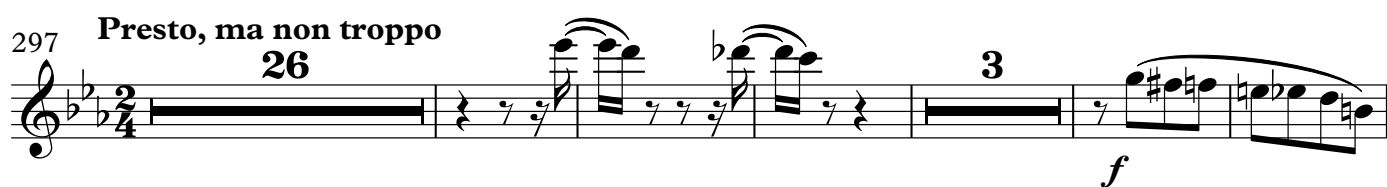
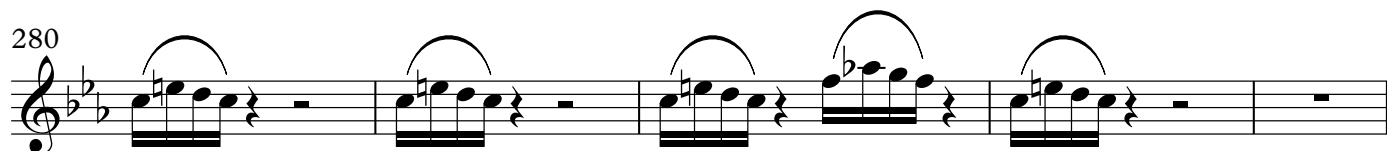
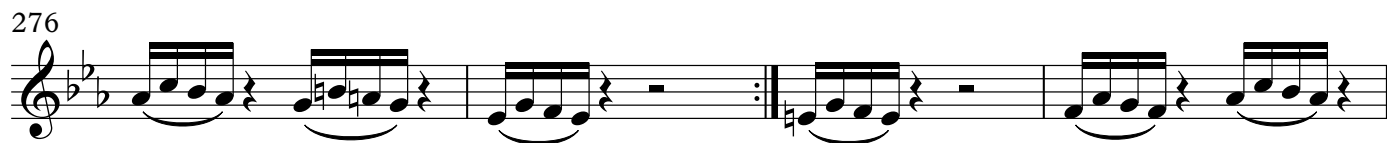
178 **Var. 9** *pp* *p*

182 *p* *p* 1.

187 2. **rit. Var. 10** *p* *p*

191





Bass Clarinet in B $\flat$

# Variations on a theme of Paganini

Set 1

Brahms/Johnson

## Thema

1 Non troppo presto [ $\text{♩} = 110$ ]

Var. 1

8 8 4 10

*mf*

33

## Var. 2

41

4

*p*

49

55

7

65

## Var. 3

25

$\text{♩} = \text{♩}$   
Var. 4

8

12

*mp*

99

101

12

## Var. 5

114  $\text{♩} = \text{♩}$

*p*

122

130 1. 2. Var. 6

*p*

137

143 Var. 7 9 7 1. 2.

Var. 8

162

*f*

169

176 Var. 9

181

*p*

185 *p*

189 1. *p*

192 2. rit. Var. 10 *p*

201 4

214 Var. 11 8 7 1. 2.

233 rit. Var. 12 4 7 1. 2.

Var. 13  
248 Vivace et scherzando 4 7 1. 2.

Var. 14  
261 Allegro 3 ff

267 7

