

Baritonoboe

Sonata da Camera

op. 2 No. 1

Arcangelo Corelli

Preludio (Largo)

6

10

Allemanda Largo

7

12

Corrente Allegro

11

22

Gavotta Allegro

Baritonoboe

Sonata da Camera

op. 2 No. 2

Arcangelo Corelli

Allemanda Adagio

8

6

12

18

8

Detailed description: This block contains the first four staves of the Allemanda Adagio. The first staff begins with a treble clef, a common time signature (C), and a key signature of one sharp (F#). It starts with a measure rest followed by a quarter note G4. The second staff continues the melody with eighth and quarter notes. The third staff has a repeat sign at the beginning and a measure rest. The fourth staff ends with a double bar line and repeat dots. The number 8 is written below the first staff, and the numbers 6, 12, and 18 are written above the second, third, and fourth staves respectively, indicating measure numbers.

Corrente Allegro

8

11

21

30

41

8

p

Detailed description: This block contains the next six staves of the Corrente Allegro. The first staff begins with a treble clef, a 3/4 time signature, and a key signature of one sharp (F#). It starts with a measure rest followed by a quarter note G4. The second staff continues the melody. The third staff has a repeat sign at the beginning. The fourth staff continues the melody. The fifth staff continues the melody. The sixth staff ends with a double bar line and repeat dots. The number 8 is written below the first staff, and the numbers 11, 21, 30, and 41 are written above the second, third, fourth, and fifth staves respectively, indicating measure numbers. The dynamic marking *p* (piano) is placed below the sixth staff.

[illegible]

4

[illegible]

12

Measure 12: Treble clef, repeat sign, eighth notes G4, A4, B4, eighth rest, quarter note C5, quarter note B4, quarter note A4, quarter note G4, quarter note F#4.

15

Musical notation for measure 15, starting with a treble clef and a common time signature. The melody consists of eighth notes: G4, A4, B4, C5, D5, E5, F#5, G5, followed by a quarter rest, then G5, F#5, E5, D5, C5, B4, A4, and G4.

18

1. 2.

Baritonoboe

Sonata da Camera

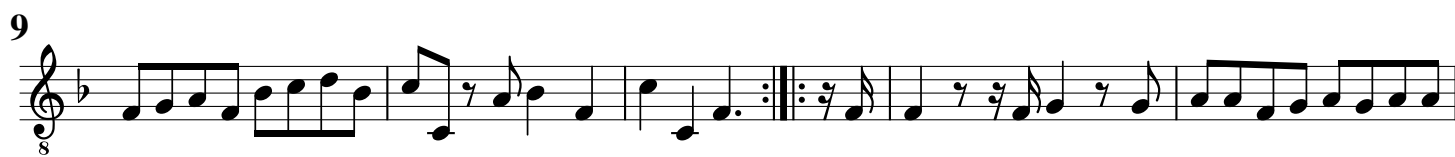
op. 2 No. 3

Arcangelo Corelli

Preludio Largo



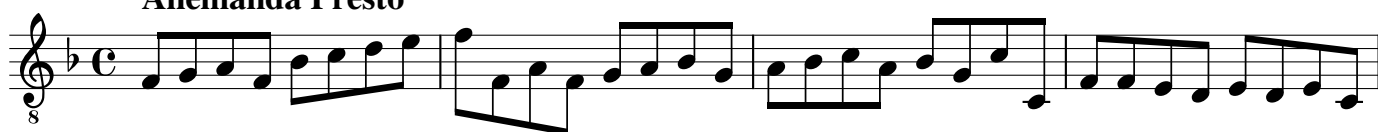
Allemanda Allegro



Adagio



Allemanda Presto



Baritonoboe

Sonata da Camera

Op. 2 No. 4

Arcangelo Corelli

Preludio Adagio

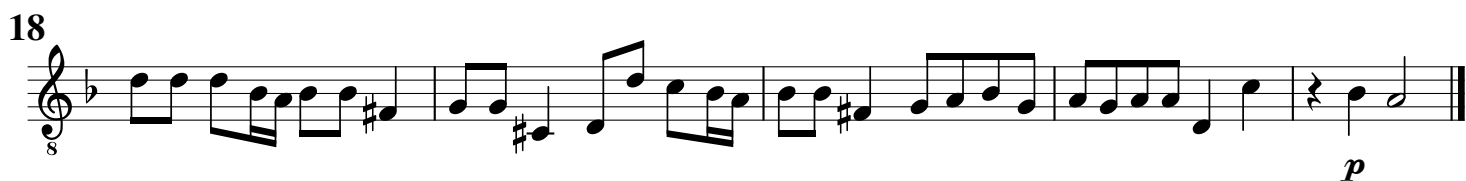
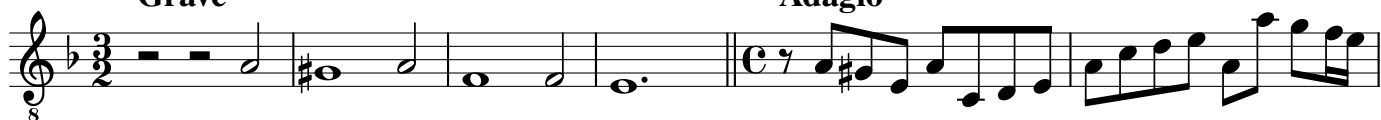


Allemanda Presto

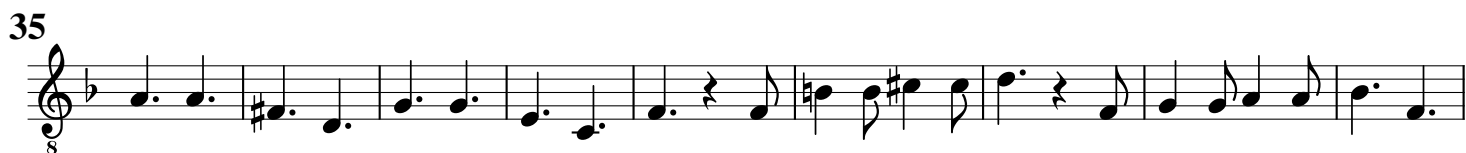


Grave

Adagio



Giga Allegro



Baritonoboe

Sonata da Camera

op. 2 No. 5

Arcangelo Corelli

Preludio Adagio



9



Allemanda Allegro

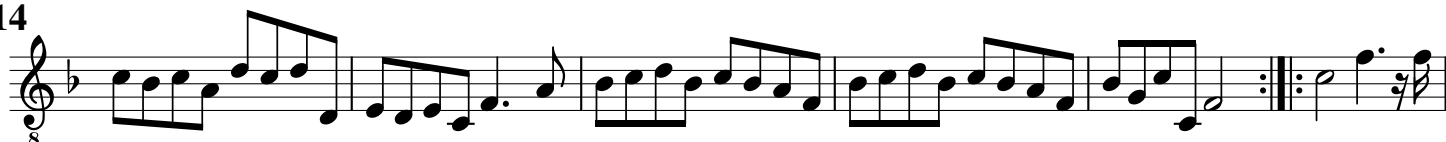
2



9



14



20



29



Sarabanda Adagio



Baritonoboe

Sonata da Camera

op. 2 No. 6

Arcangelo Corelli

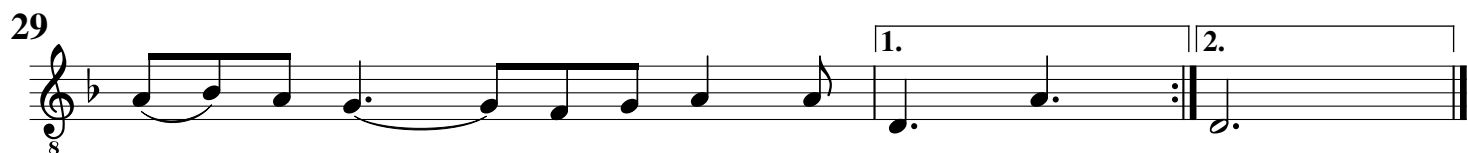
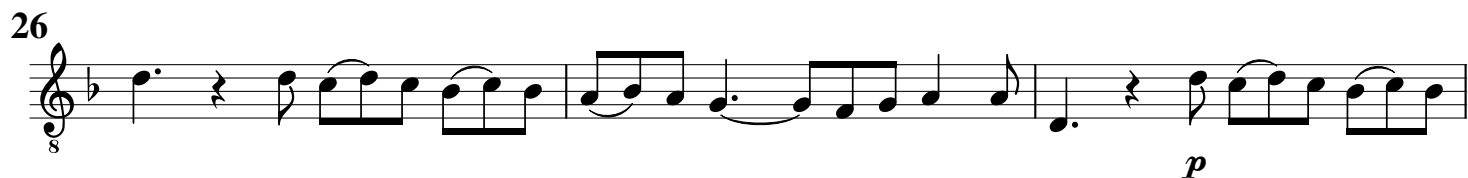
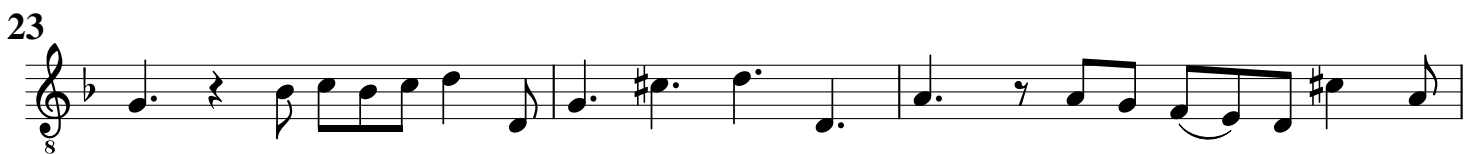
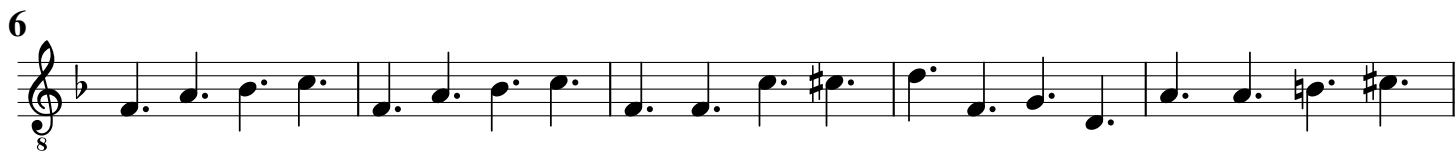
Allemanda Largo



Corrente Allegro



Giga Allegro



Baritonoboe

Sonata da Camera

op. 2 No. 7

Arcangelo Corelli

Preludio Adagio

Musical score for the Preludio Adagio section. The score is written for Baritonoboe in C major, common time (C). It consists of 17 measures. The first measure is marked with an 8-measure rest. The tempo is Adagio. The key signature has one sharp (F#). The score is divided into four systems: measures 1-6, 7-12, 13-16, and 17. The final measure (17) ends with a double bar line.

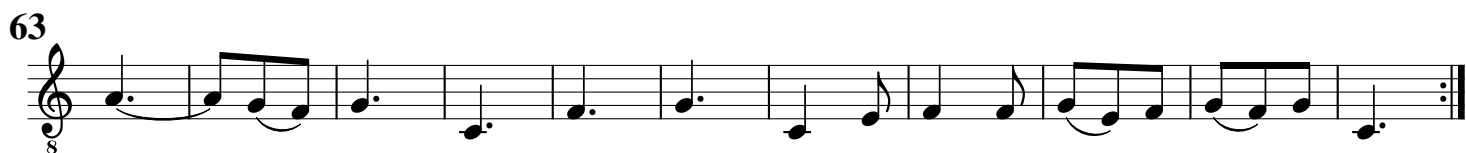
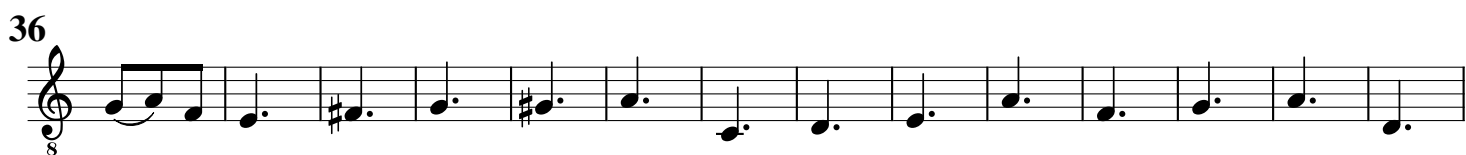
Allemanda Allegro

Musical score for the Allemanda Allegro section. The score is written for Baritonoboe in C major, common time (C). It consists of 21 measures. The first measure is marked with an 8-measure rest. The tempo is Allegro. The key signature has one sharp (F#). The score is divided into four systems: measures 1-6, 7-14, 15-20, and 21. The final measure (21) ends with a double bar line. The dynamics *p* (piano) are indicated at the end of the second and fourth systems.

Corrente Allegro



Giga Allegro



Baritonoboe

Sonata da Camera

op. 2 No. 8

Arcangelo Corelli

Preludio Adagio

6

11

Allemanda Largo

7

12

18

24

29

p

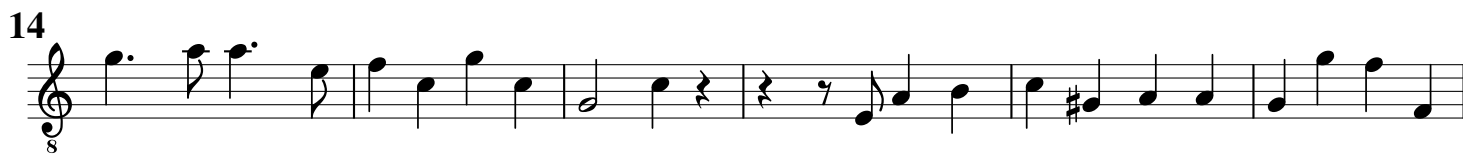
f

p

Tempo di Sarabanda Adagio



Tempo di Gavotta Allegro



Baritonoboe

Sonata da Camera

op. 2 No. 9

Arcangelo Corelli

Allemanda Largo

First system (measures 1-8): Treble clef, key of B-flat major, common time. Measure 1 has an 8-measure rest. The melody begins in measure 2 with a quarter rest, followed by a series of eighth and quarter notes. Measure 8 ends with a repeat sign.

Second system (measures 9-16): Continues the melody. Measure 16 ends with a repeat sign.

Giga Allegro

Third system (measures 17-20): Treble clef, key of B-flat major, 3/4 time. Measure 17 has a 6-measure rest. The melody begins in measure 18 with a quarter note, followed by eighth and quarter notes. Measure 20 ends with a repeat sign.

Fourth system (measures 21-36): Continues the melody. Measure 36 ends with a repeat sign.

Fifth system (measures 37-54): Continues the melody. Measure 54 ends with a repeat sign.

Giga Allegro

Sixth system (measures 55-61): Treble clef, key of B-flat major, 12/8 time. Measure 55 has a 12-measure rest. The melody begins in measure 56 with a quarter note, followed by eighth and quarter notes. Measure 61 ends with a repeat sign.

Seventh system (measures 62-76): Continues the melody. Measure 76 ends with a repeat sign.

Eighth system (measures 77-17): Continues the melody. Measure 17 ends with a repeat sign.

p

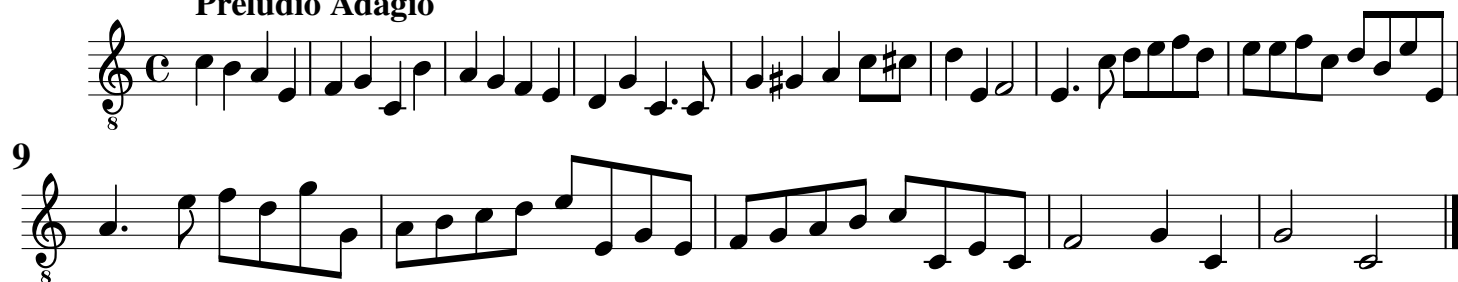
Baritonoboe

Sonata da Camera

op. 2 No. 10

Arcangelo Corelli

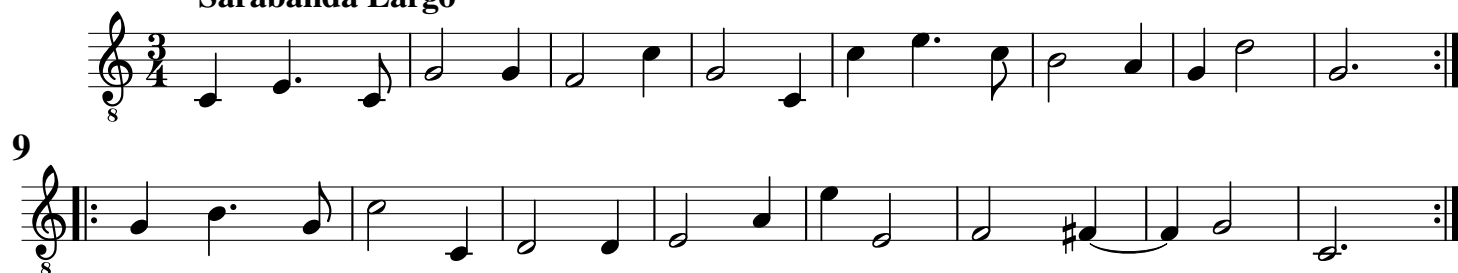
Preludio Adagio



Allemanda Allegro



Sarabanda Largo



Corrente Allegro



Baritonoboe

Sonata da Camera

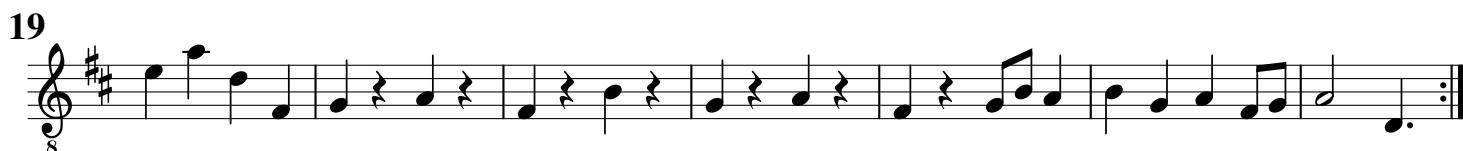
op. 1 No. 11

Arcangelo Corelli

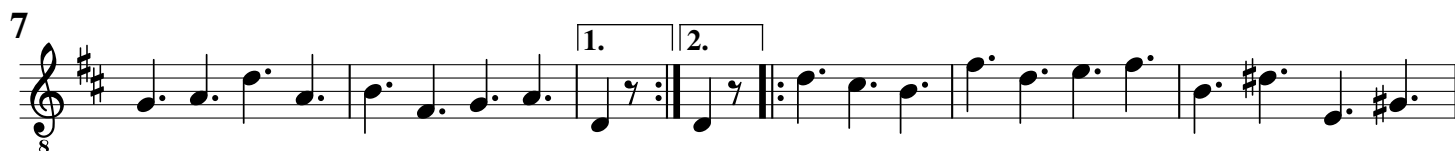
Preludio Adagio



Allemanda Presto



Giga Allegro



Baritonoboe

Sonata da Camera

Op. 2 No. 12

Arcangelo Corelli

Ciaccona Largo



14 Allegro

