

Missa solemnis in c

KV 139 · "Waisenhausmesse"

Trombone I · Alto

Wolfgang A. Mozart
MDCCLVI - MDCCXCI

Kyrie

Adagio

5 *f* VI I *f* VI. *f*

10 VI. *f* VI.

13 *Allegro* Ob. *f*

15 8 23 VI I+II +Ob., Trp. *f*

28 1 *fp*

34 4 38 1 *f* *p*

44 *f*

50

56 7 63 Archi + Ob. *f*

67 1 4 *fp*



98 100 3 105 S solo 34

Andante

(Fine) Chri - ste e - lei - son.

(dal Segno al Fine)

Kyrie **Allegro** (T. 13) da capo

Gloria

Allegro



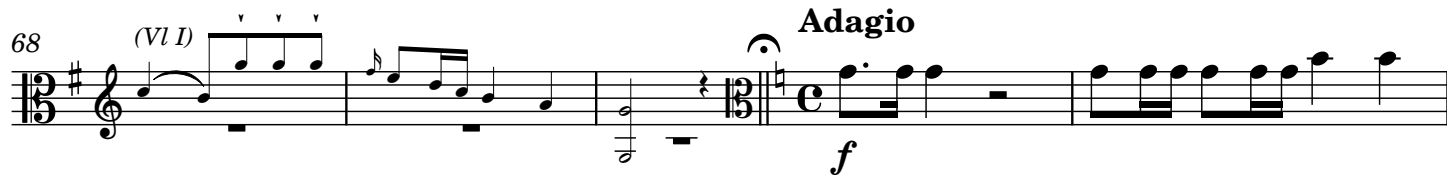
Andante

V I 24 6 32 12 44 22 V I

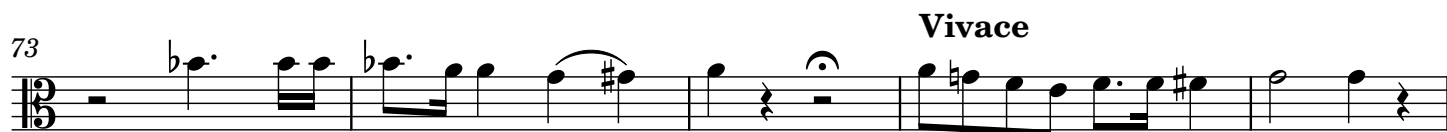
Nachspiel ohne Soli

A solo S solo

68 (VI I) **Adagio**



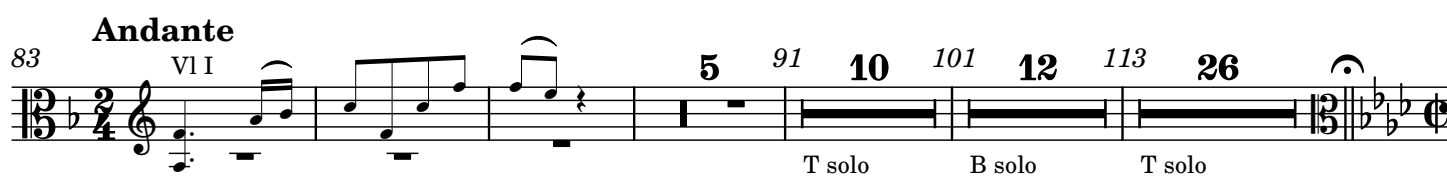
73 **Vivace**



78



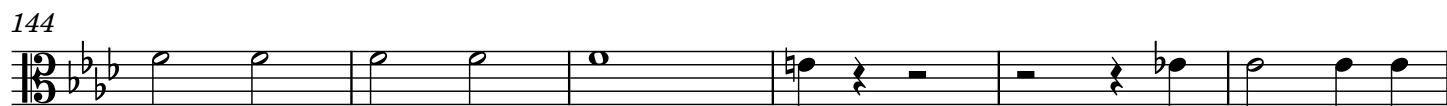
83 **Andante** VI I



139 **Adagio** VI I



144



150



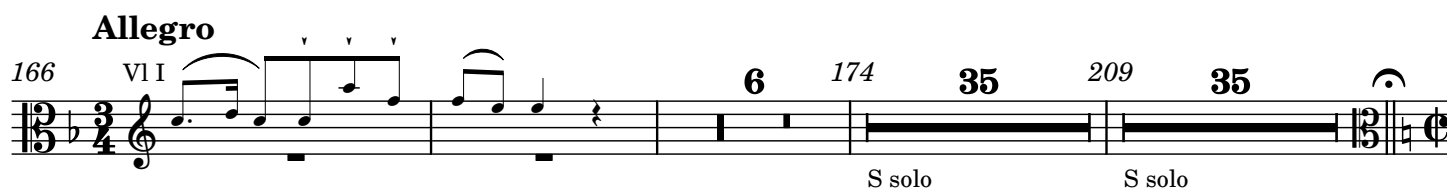
156



161



166 **Allegro** VI I



Allegro

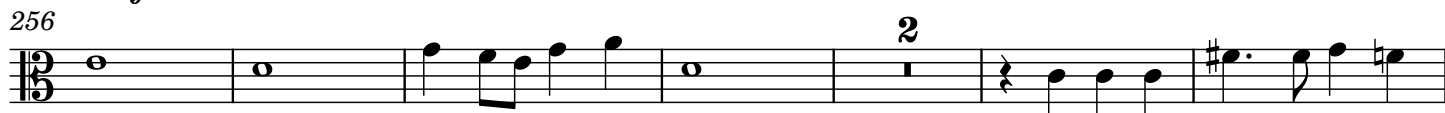
244 Trb. III Trb. II



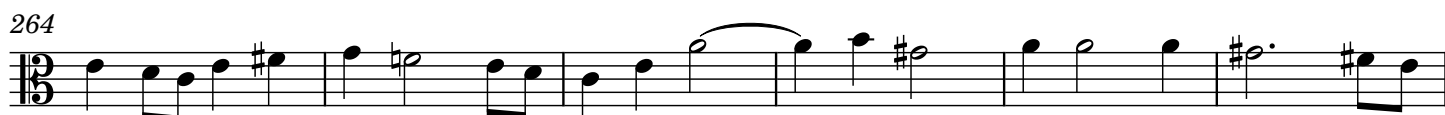
250 *f*



256 2



264



270



276 2



284



290



297



303 2 305



310



316 Trb. III Trb. II *f*



322



328



334

**Allegro****Credo**

7



13



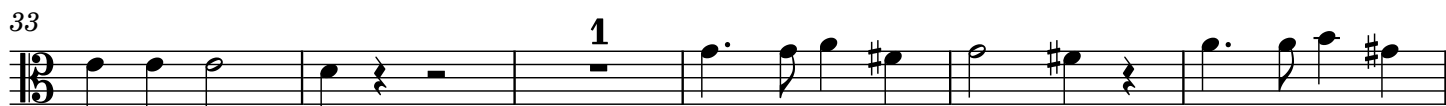
21



27



33



39



45



51



56



62



Andante

75 S solo

18 95 20 VI I

Et in - car - na - tus est de S, A soli

Adagio

116 Trp. a 4 con sord.

fp Trp. *fp* Trp. *fp*

120

fp *fp* Trp. *fp*

124

p

Allegro

128 S solo

Et re - sur - re - - - - - (-xit)

132

f

138

144

149

1

154

Adagio **Allegro**

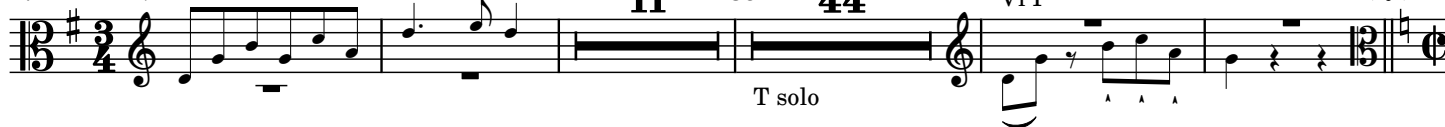
160



166

**Andante**

172



231

Allegro

Chor S



236



241



247



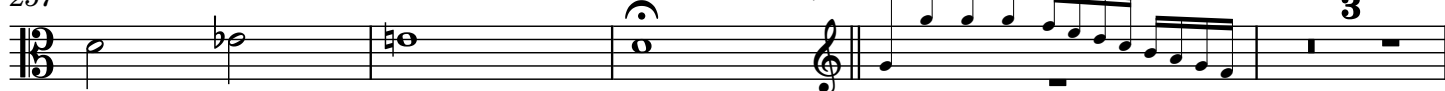
252



257

Adagio**Allegro**

VI I+II



264 Chor S

Et vi - tam ven- *f*

268

273

280

285

290

296

302

307

312

317



323

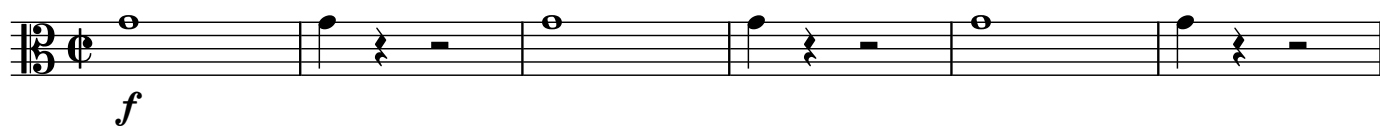


330



Sanctus

Adagio



7



Allegro

13



19



27



34



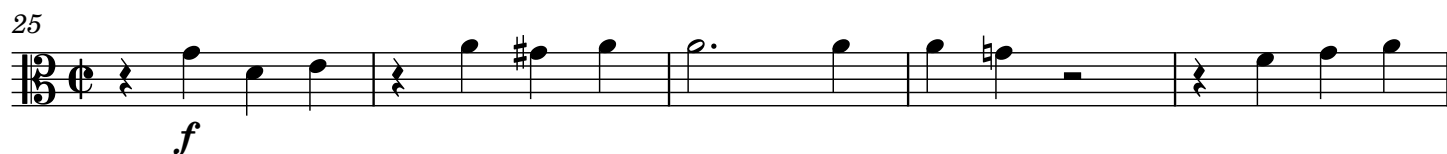
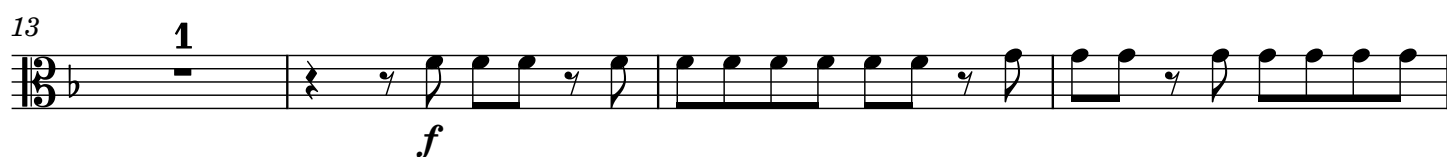
40



Benedictus

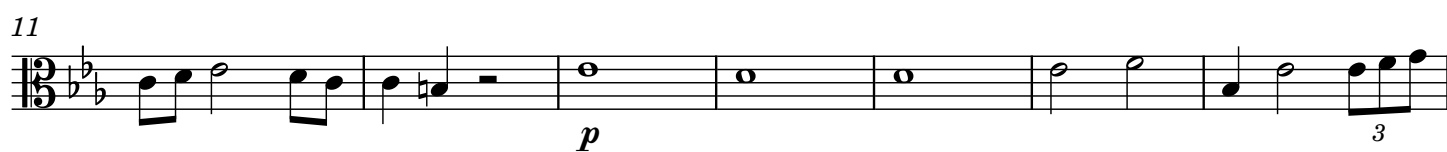
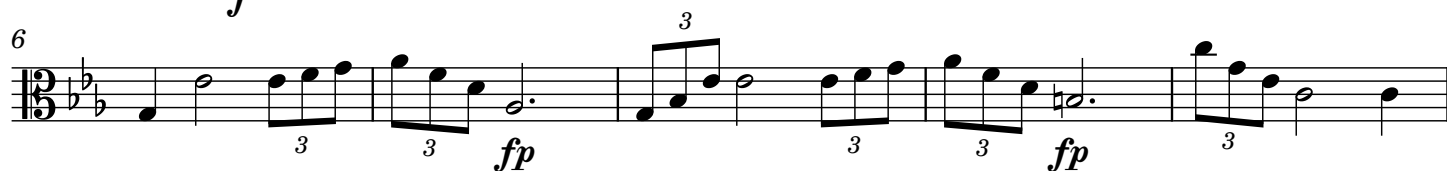
Andante

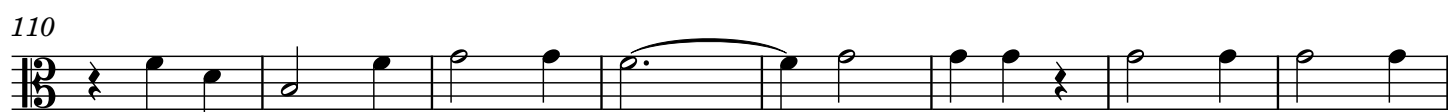
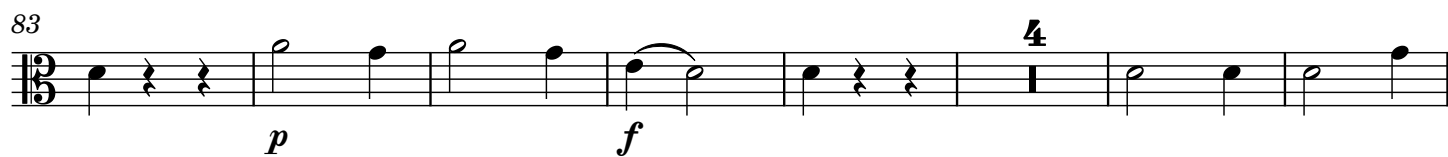
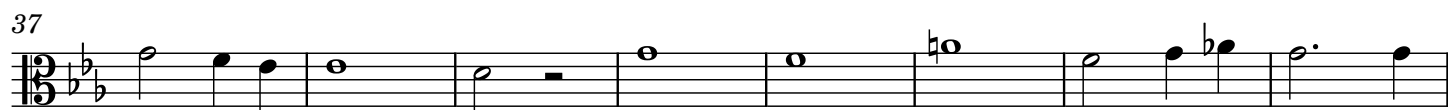
S solo



Agnus Dei

Andante





Notizen