

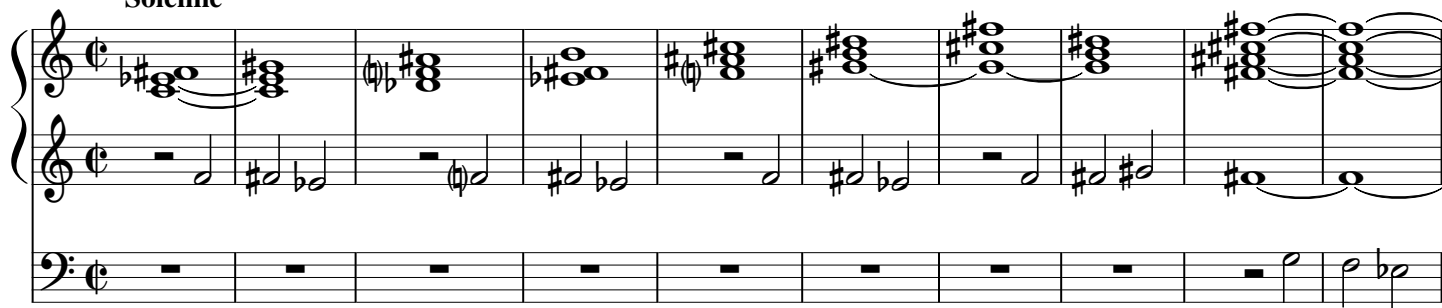
# Agnello mistico

Carlotta Ferrari 2021

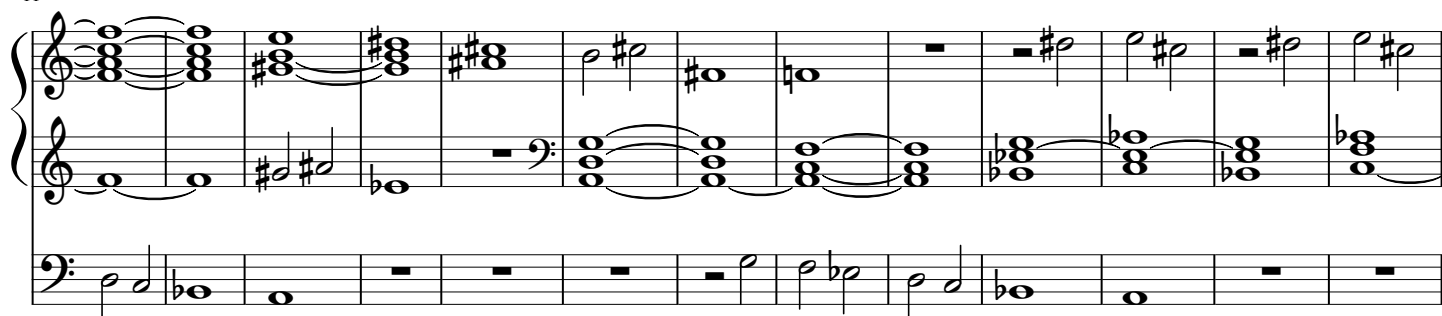


Trasposizioni RPS del modo misolidio

Solenne



11



24

Measures 24-36 of the musical score. The system consists of three staves. The top staff is a treble clef with a key signature of one sharp (F#). It contains whole notes and rests. The middle staff is a grand staff (treble and bass clefs) with a key signature of one flat (Bb). It contains chords and moving lines. The bottom staff is a bass clef with a key signature of one flat (Bb), containing whole notes and rests.

37

Measures 37-47 of the musical score. The system consists of three staves. The top staff is a treble clef with a key signature of one sharp (F#), featuring complex chords and some accidentals. The middle staff is a grand staff (treble and bass clefs) with a key signature of one flat (Bb), containing chords and moving lines. The bottom staff is a bass clef with a key signature of one flat (Bb), containing whole notes and rests.

48

Measures 48-59 of the musical score. The system consists of three staves. The top staff is a treble clef with a key signature of one sharp (F#), featuring complex chords and some accidentals. The middle staff is a grand staff (treble and bass clefs) with a key signature of one flat (Bb), containing chords and moving lines. The bottom staff is a bass clef with a key signature of one flat (Bb), containing whole notes and rests.

60

Measures 60-71 of the musical score. The system consists of three staves. The top staff is a treble clef with a key signature of one sharp (F#), featuring complex chords and some accidentals. The middle staff is a grand staff (treble and bass clefs) with a key signature of one flat (Bb), containing chords and moving lines. The bottom staff is a bass clef with a key signature of one flat (Bb), containing whole notes and rests. The word *rit. molto* is written above the middle staff in measure 64.