

Viola

Sonata Opus 5 nr 5

A. Corelli
Arr. G.H.Kruithof

Adagio

Adagio section of the Sonata Opus 5 nr 5 for Viola. The music is in 12/8 time, key of B-flat major. It features a slow, flowing melody with many slurs and ties. The first staff starts with a treble clef, a key signature of two flats, and a common time signature. The second staff begins at measure 4, and the third staff begins at measure 9. The section ends with a double bar line and repeat dots.

Vivace

Vivace section of the Sonata Opus 5 nr 5 for Viola. The music is in 12/8 time, key of B-flat major. It features a faster, more rhythmic melody with many slurs and ties. The first staff starts with a treble clef, a key signature of two flats, and a common time signature. The second staff begins at measure 10, the third at measure 20, the fourth at measure 30, the fifth at measure 37, the sixth at measure 46, and the seventh at measure 52. The section ends with a double bar line and repeat dots.

2

59



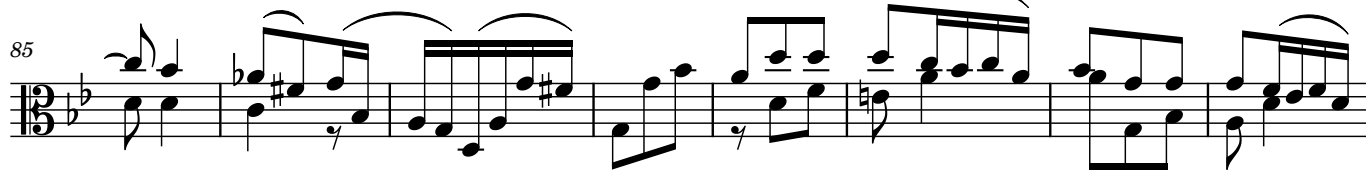
68



77



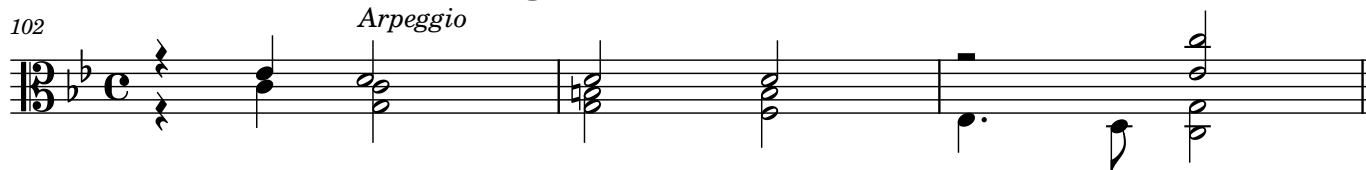
85



93

**Adagio**

102

Arpeggio**Adagio**

10



20



30



Vivace

9

17

26

35

42

49

57

65

79

4

Giga



4



6



9



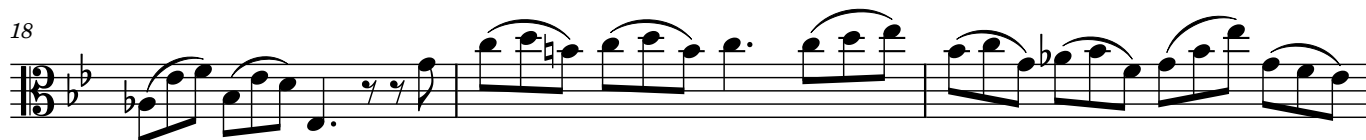
11



15



18



21



24

