

# Chamber Concerto RV 92

for violin, violin & viola

Score

Antonio Vivaldi

**Allegro**

Violin 1

Violin 2

Viola

Vln.1

Vln.2

Vla.

*f*

*f*

*f*

*p*

*p*

*f*

*p*

*f*

*p*

## Chamber Concerto RV 92

15

Vln.1

Vln.2

Vla.

*mf*

19

Vln.1

Vln.2

Vla.

*f*

22

Vln.1

Vln.2

Vla.

*p*

25

Vln.1

Vln.2

Vla.

*f*

28

Vln.1

Vln.2

Vla.

*p*

*mf*

*p*

Detailed description: This page contains the musical score for measures 15 through 28 of Chamber Concerto RV 92. The score is written for three instruments: Violin 1 (Vln.1), Violin 2 (Vln.2), and Viola (Vla.). The key signature is one sharp (F#) and the time signature is 4/4. The score is divided into five systems. The first system (measures 15-18) features Vln.1 with a melodic line and Vln.2/Vla. with a rhythmic accompaniment. The second system (measures 19-21) shows Vln.2/Vla. taking over the melodic line while Vln.1 provides accompaniment. The third system (measures 22-24) continues this pattern with Vln.2/Vla. as the primary melodic voice. The fourth system (measures 25-27) features a more active Vln.1 part. The fifth system (measures 28-31) concludes the page with a return to a more active Vln.1 and a sustained Vln.2/Vla. accompaniment. Dynamics include *mf* (mezzo-forte), *f* (forte), and *p* (piano). The score includes various musical notations such as slurs, ties, and accents.

## Chamber Concerto RV 92

3

32

Vln.1

Vln.2

Vla.

*mf* *p* *mf*

37

Vln.1

Vln.2

Vla.

*p* *f* *p* *mf*

40

Vln.1

Vln.2

Vla.

*p*

43

Vln.1

Vln.2

Vla.

*f* *p* *f* *mf* *p* *mf*

47

Vln.1

Vln.2

Vla.

*f* *f* *mf*

## Chamber Concerto RV 92

50

Vln.1

Vln.2

Vla.

*p*

*f*

54

Vln.1

Vln.2

Vla.

*p*

57

Vln.1

Vln.2

Vla.

*mf*

60

Vln.1

Vln.2

Vla.

*p*

63

Vln.1

Vln.2

Vla.

*p*

## Chamber Concerto RV 92

5

66

Vln.1

Vln.2

Vla.

*cresc.*

66

66

69

Vln.1

Vln.2

Vla.

69

69

72

Vln.1

Vln.2

Vla.

*mf*

*mf*

*mf*

72

72

76

Vln.1

Vln.2

Vla.

76

76

79

Vln.1

Vln.2

Vla.

*f*

*f*

79

79

## Chamber Concerto RV 92

82

Vln.1

Vln.2

Vla.

*mf*

84

Vln.1

Vln.2

Vla.

*f*

*p*

87

Vln.1

Vln.2

Vla.

*p*

90

Vln.1

Vln.2

Vla.

*f*

93

Vln.1

Vln.2

Vla.

*f*

*tr*

*tr*

*tr*

*f*

Detailed description: This page contains measures 82 through 93 of the Chamber Concerto RV 92. The score is for Violin 1, Violin 2, and Viola. Measures 82-83 show the Violin 1 part with triplets and a *mf* dynamic, while Violin 2 and Viola are silent. Measures 84-86 feature a rapid triplet passage in Violin 1 with a crescendo leading to a *f* dynamic, while Violin 2 and Viola play a steady eighth-note accompaniment. Measures 87-89 show Violin 1 with a *p* dynamic and triplets, while Violin 2 and Viola continue the accompaniment. Measures 90-92 feature a *f* dynamic in Violin 1 with trills, while Violin 2 and Viola play the accompaniment. Measure 93 shows Violin 1 with trills and a *f* dynamic, while Violin 2 and Viola play the accompaniment.

## Chamber Concerto RV 92

7

96

Vln.1

Vln.2

Vla.

99

Vln.1

Vln.2

Vla.

102

Vln.1

Vln.2

Vla.

*p*

*f*

106

Larghetto

Vln.1

Vln.2

Vla.

*p*

*f*

115

Vln.1

Vln.2

Vla.

## Chamber Concerto RV 92

124

Vln.1

Vln.2

Vla.

*mf*

*p*

*mf*

*p*

132

Vln.1

Vln.2

Vla.

*mf*

*p*

*mf*

*p*

142 **Allegro**

Vln.1

Vln.2

Vla.

*f*

*f*

*f*

145

Vln.1

Vln.2

Vla.

*f*

148

Vln.1

Vln.2

Vla.

*mf*

*mf*



## Chamber Concerto RV 92

9

152

Vln.1

Vln.2

Vla.

*f*

*p*

*mf*

155

Vln.1

Vln.2

Vla.

*p*

*f*

*p*

158

Vln.1

Vln.2

Vla.

*f*

*f*

161

Vln.1

Vln.2

Vla.

164

Vln.1

Vln.2

Vla.

167

Vln.1

Vln.2

Vla.

170

Vln.1

Vln.2

Vla.

173

Vln.1

Vln.2

Vla.

177

Vln.1

Vln.2

Vla.

180

Vln.1

Vln.2

Vla.

*mf*

*p*

*cresc.*

*p*

*f*

*f*

*tr*

Detailed description: This page contains the musical score for measures 167 through 180 of Chamber Concerto RV 92. The score is arranged in three systems, each with three staves: Violin 1 (Vln.1), Violin 2 (Vln.2), and Viola (Vla.). The key signature is two sharps (F# and C#), and the time signature is 3/4. Measure 167 shows Vln.1 with a short melodic phrase, Vln.2 with a continuous eighth-note pattern, and Vla. with a steady eighth-note accompaniment. Measure 170 features Vln.1 with a more complex melodic line, Vln.2 with rests, and Vla. continuing the eighth-note pattern. Measure 173 introduces dynamics: Vln.1 has a *p* (piano) marking, Vln.2 has rests, and Vla. has a *p* marking and a crescendo (*cresc.*) leading into measure 177. Measure 177 shows Vln.1 with a trill (*tr*) and a melodic phrase, Vln.2 with eighth-note patterns, and Vla. with a *f* (forte) marking and a crescendo. Measure 180 concludes the system with Vln.1 and Vln.2 playing sustained notes and Vla. continuing the eighth-note accompaniment.

## Chamber Concerto RV 92

11

183

Vln.1

Vln.2

Vla.

*mf*

*p*

186

Vln.1

Vln.2

Vla.

*p*

*pp*

189

Vln.1

Vln.2

Vla.

193

Vln.1

Vln.2

Vla.

196

Vln.1

Vln.2

Vla.

*f*

*f*

*f*

Detailed description of the musical score: The score is for a chamber concerto in D major, RV 92, by Antonio Vivaldi. This page contains measures 183 through 198. The instrumentation is Violin 1, Violin 2, and Viola. The key signature has two sharps (F# and C#). The time signature is 4/4. The score is divided into six systems. System 1 (measures 183-185): Vln.1 plays a melodic line starting on G4, moving up stepwise. Vln.2 has whole rests. Vla. plays a rhythmic pattern of eighth notes. Dynamic markings include *mf* for Vln.1 and *p* for Vla. System 2 (measures 186-188): Vln.1 continues the melodic line. Vln.2 has whole rests. Vla. continues the rhythmic pattern. Dynamic marking *p* is present. System 3 (measures 189-192): Vln.1 and Vln.2 play triplets of eighth notes. Vla. continues the rhythmic pattern. System 4 (measures 193-195): Vln.1 and Vln.2 continue the triplet pattern. Vla. continues the rhythmic pattern. System 5 (measures 196-198): All instruments play with a forte (*f*) dynamic. Vln.1 and Vln.2 play eighth notes, while Vla. continues the rhythmic pattern. The score includes various musical notations such as notes, rests, slurs, and dynamic markings.

199

Vln.1

Vln.2

Vla.

*f*

202

Vln.1

Vln.2

Vla.

*f*

205

Vln.1

Vln.2

Vla.

*p*

*mf*

*f*

209

Vln.1

Vln.2

Vla.

*p*

*p*

213

Vln.1

Vln.2

Vla.

*p*

Detailed description: This page contains the musical score for measures 199 through 213 of Chamber Concerto RV 92. The score is arranged in five systems, each with three staves: Violin 1 (Vln.1), Violin 2 (Vln.2), and Viola (Vla.). The key signature is two sharps (F# and C#), and the time signature is 3/4. Measure 199 features a forte (*f*) dynamic for all instruments. Measure 202 continues the forte (*f*) dynamic. Measure 205 shows a dynamic shift, with Violin 1 and 2 playing forte (*f*) and Viola playing piano (*p*). Measure 209 features a piano (*p*) dynamic for all instruments. Measure 213 continues the piano (*p*) dynamic. The score includes various musical notations such as eighth notes, sixteenth notes, and rests, as well as dynamic markings and articulation symbols.

## Chamber Concerto RV 92

13

216

Vln.1

Vln.2

Vla.

216

218

Vln.1

Vln.2

Vla.

218

*f* *mf*

*f* *p*

222

Vln.1

Vln.2

Vla.

222

*f*

*f*

226

Vln.1

Vln.2

Vla.

226

# Chamber Concerto RV 92

Violin 1

for violin, violin & viola

Antonio Vivaldi

**Allegro**

Violin 1 score for Chamber Concerto RV 92 by Antonio Vivaldi. The score is in treble clef, key of D major (two sharps), and common time (C). It consists of 39 measures across 10 staves. The tempo is marked **Allegro**. Dynamics include forte (*f*), piano (*p*), mezzo-forte (*mf*), and mezzo-piano (*mp*). The score features various musical notations such as slurs, ties, and accents.

40 41 42 43 44

*p* *f* *p*

45 46 47 48

*f* *f*

49 50 51 52

*p*

53 54 19 73 74 75

*f* *mf*

76 77 78 79

*f*

80 81 82

*mf* *f*

83 84

85 86 87

*f* *p* *p*

88 89 90 91

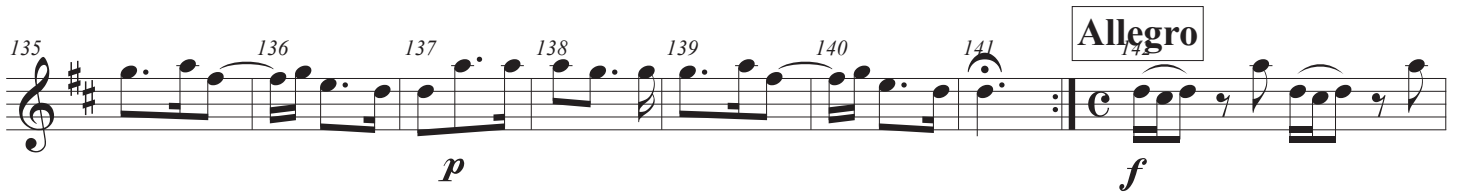
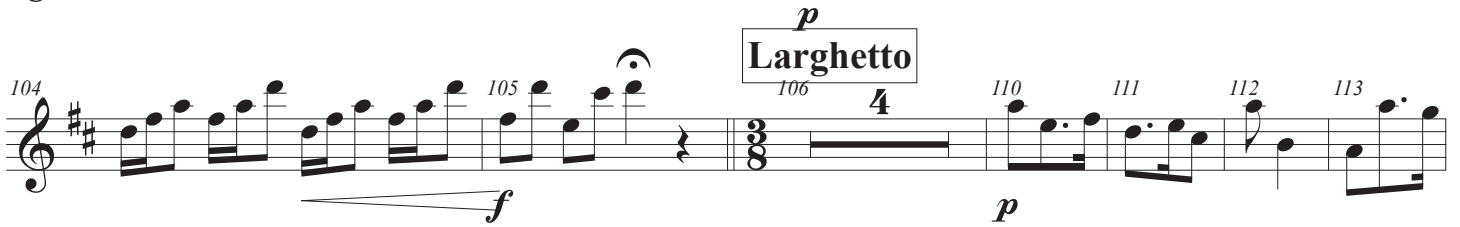
*f*

92 93 94 95

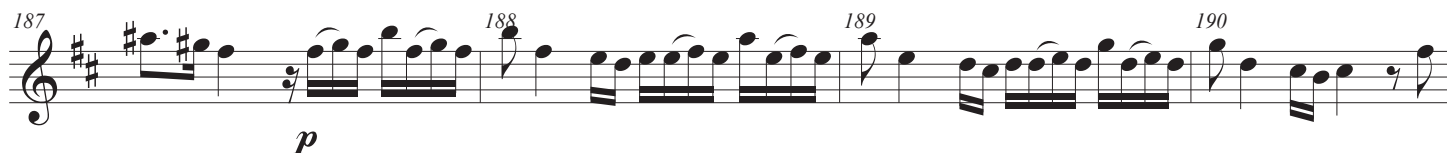
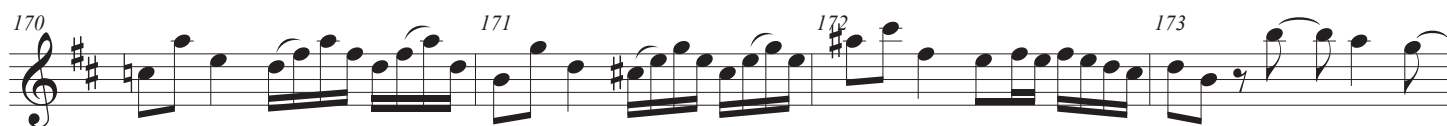
*tr* *tr* *tr* *tr* *tr*

# Chamber Concerto RV 92

3

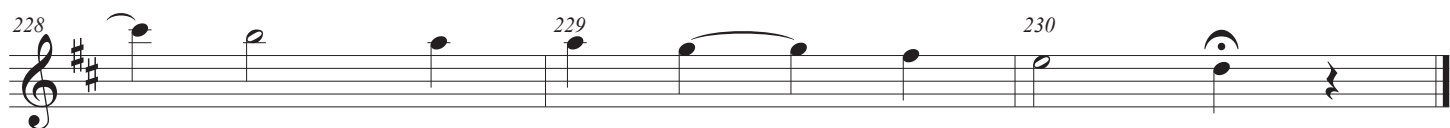
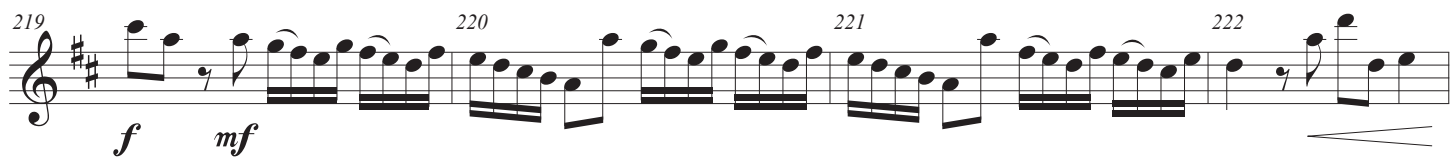
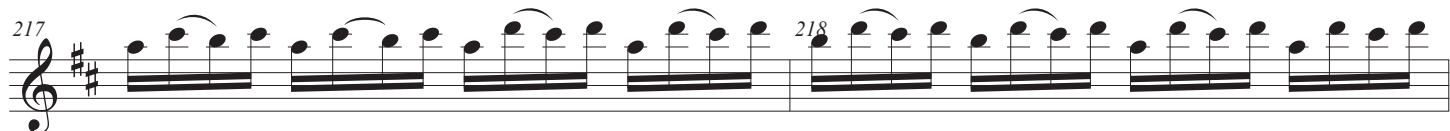






## Chamber Concerto RV 92

5



# Chamber Concerto RV 92

Violin 2

for violin, violin & viola

Antonio Vivaldi

**Allegro**

53

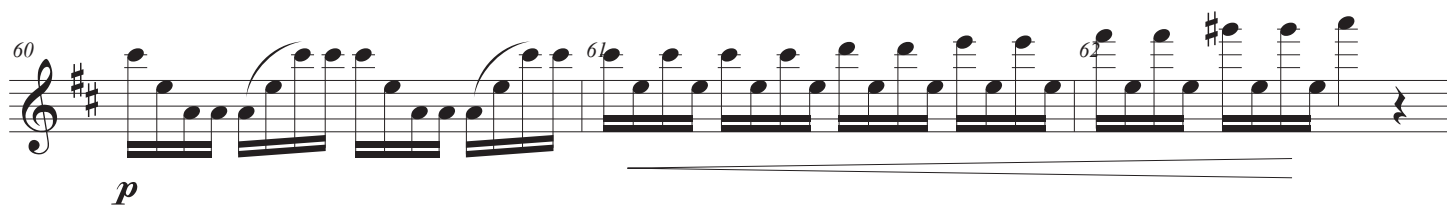
54 *p*



57 *f*



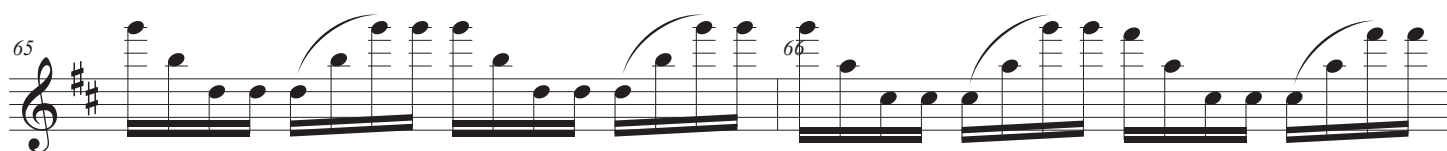
60 *p*



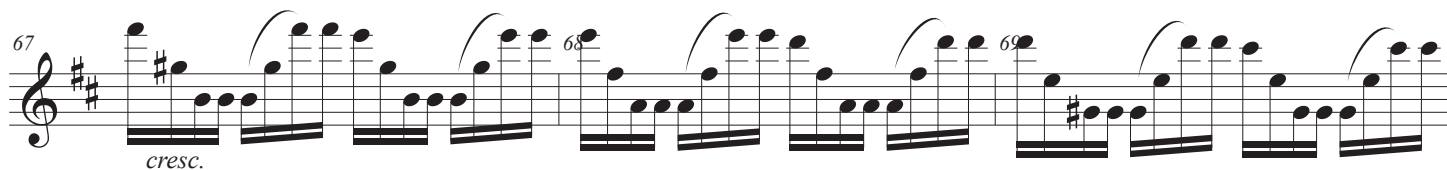
63 *p*



65



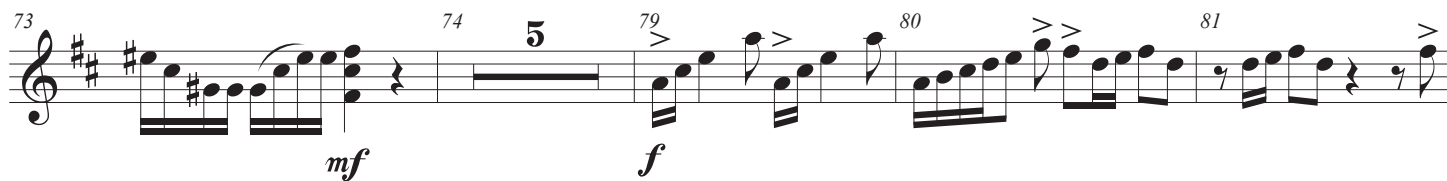
67 *cresc.*



70



73 *mf* *f*

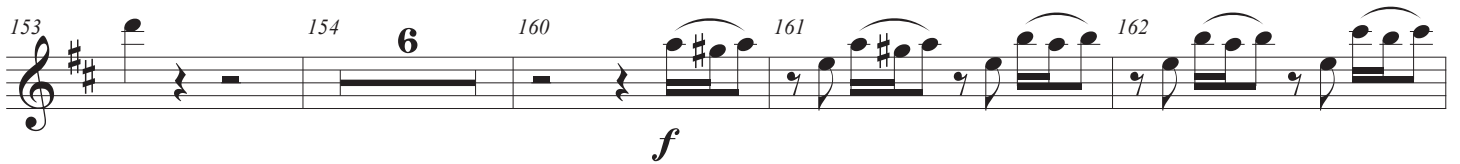
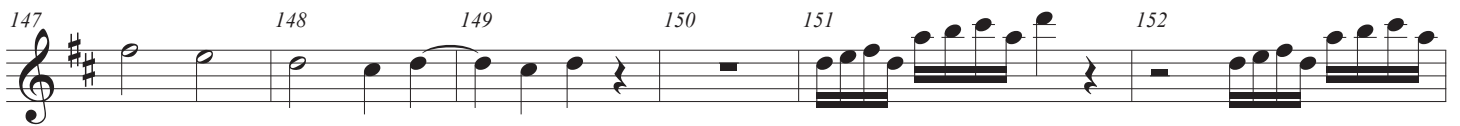


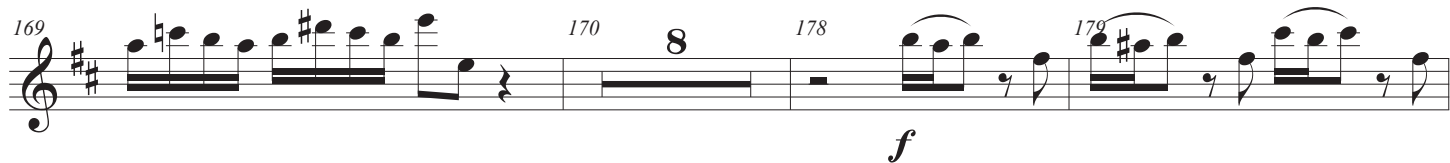
82 *f*



# Chamber Concerto RV 92

3





# Chamber Concerto RV 92

for violin, violin & viola

Viola

Antonio Vivaldi

**Allegro**

2 3 4

*f*

5 6 7 8

*p*

9 10 11 12

*f* *p*

13 14 15 16

*mf*

17 18 19 20

21 22 23 24

*p*

25 26 27 28

*f* *p*

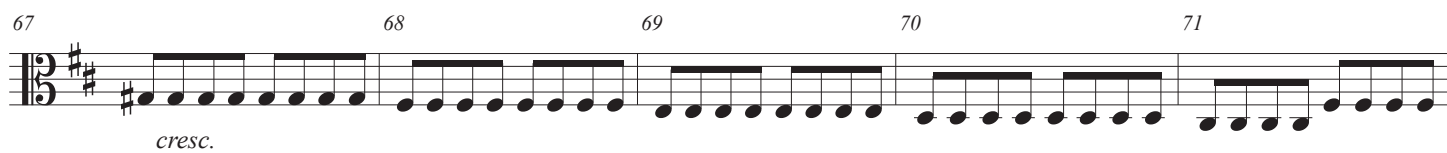
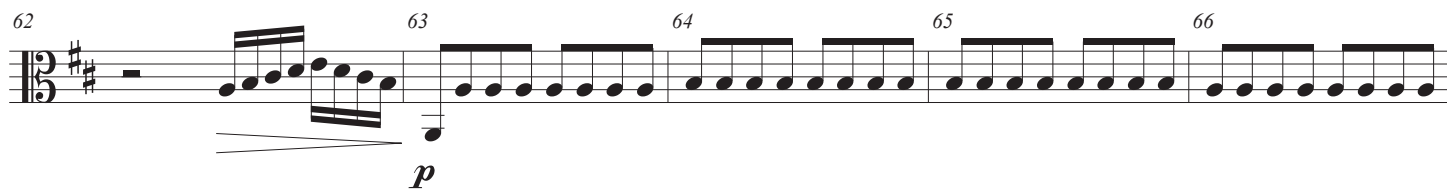
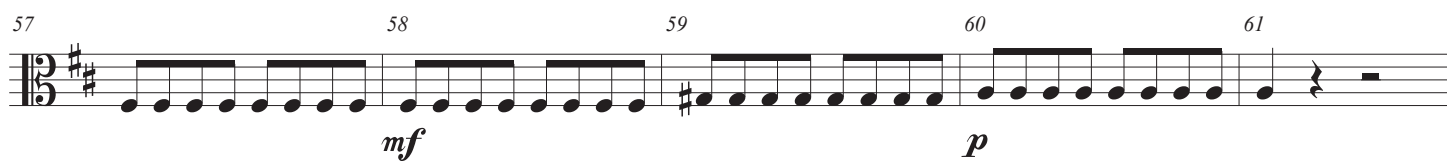
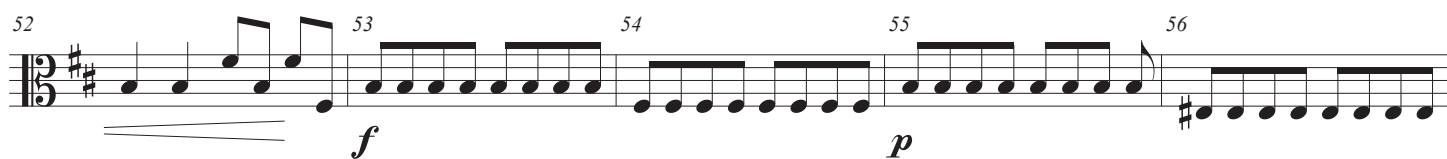
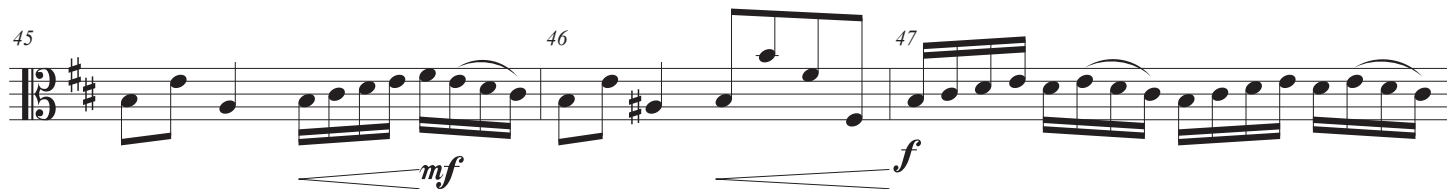
29 30 31 32

*mf* *p*

33 34 35 36

*mf* *p* *mf*

## Chamber Concerto RV 92





# Chamber Concerto RV 92

3

72 73 74 75 76

*mf*

77 78 79 80

*f*

81 82 83 84

*mf*

85 86 87 88

*f*

89 90 91

*f*

92 93 94

95 96 97

98 99 100

101

102 103 104 105

*p* *f*

**Larghetto**

106 107 108 109 110 111 112 113 114

*p*

115 116 117 118 119 120 121 122 123

124 125 126 127 128 129 130 131

*mf* *p*

132 133 134 135 136 137 138 139 140 141

*mf* *p*

**Allegro**

142 143 144 145

*f*

146 147 148

149 150 151 152

*mf*

153 154 155 156

*p* *mf* *f*

## Chamber Concerto RV 92

5

157 158 159

*p* *f*

160 161 162 163 164

165 166 167 168 169

170 171 172 173

174 175 176 177 178

*p* *cresc.* *f*

179 180 181

182 183 184

*p*

185 186 187 188

*pp*

189 190 191 192

## Chamber Concerto RV 92

193 194 195 196

*f*

197 198 199 200

*f*

201 202 203

204 205 206 207

*f* *p* *mf*

208 209 210 211 212

*f* *p* *p*

213 214 215 216 217

*p*

218 219 220 221

*f* *p*

222 223 224 225

*f*

226 227 228

