

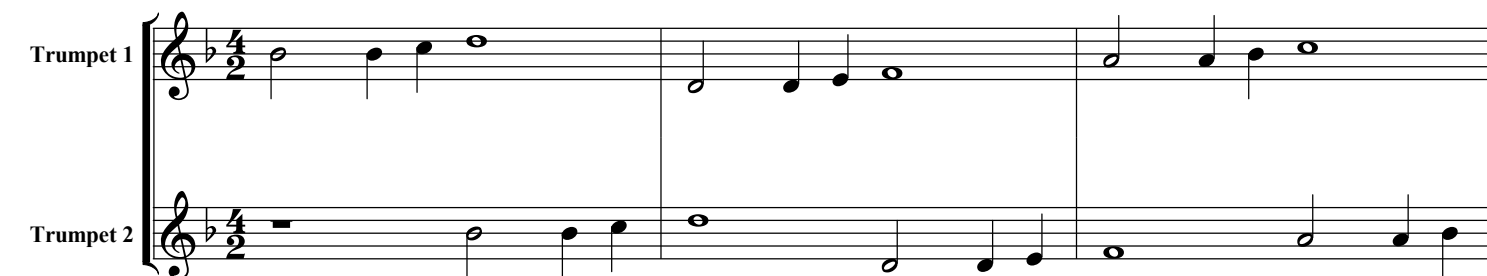
Duo for Trumpets

arr. Hans Jorgen Messerschmidt

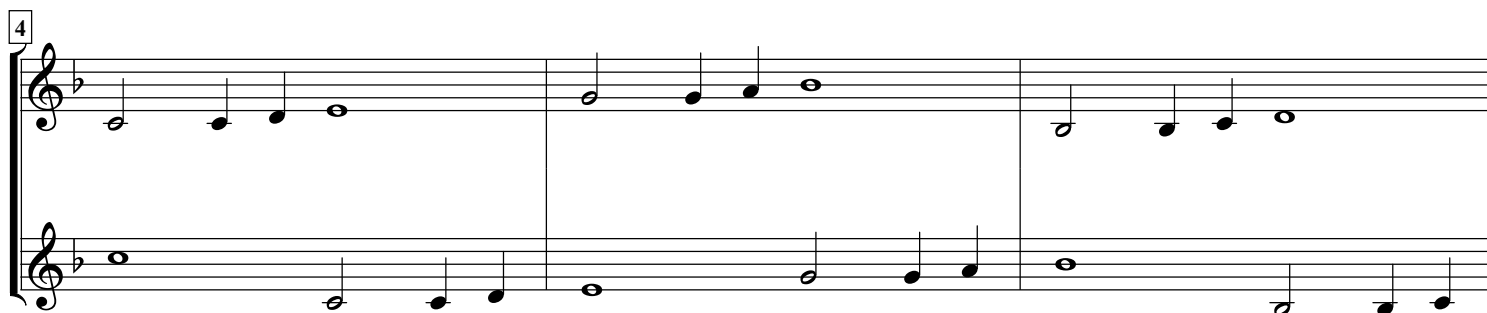
Adam Gumpelzhaimer (1559-1625)

Trumpet 1

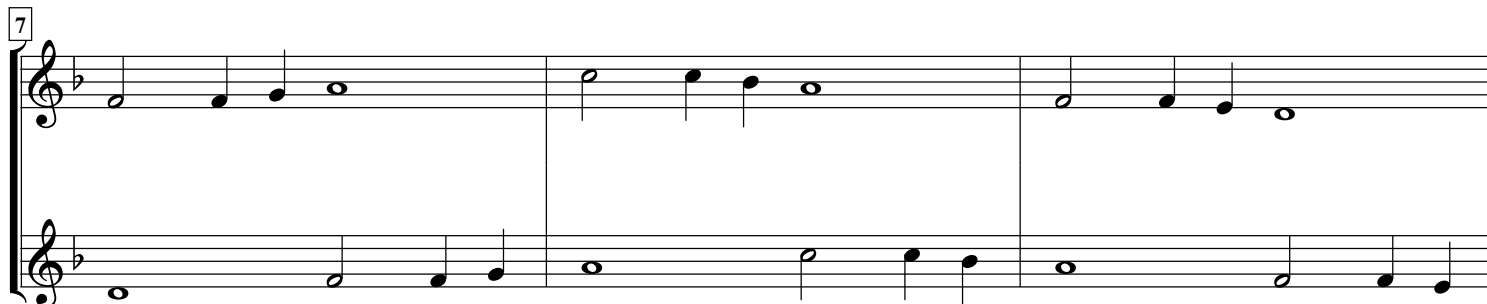
Trumpet 2



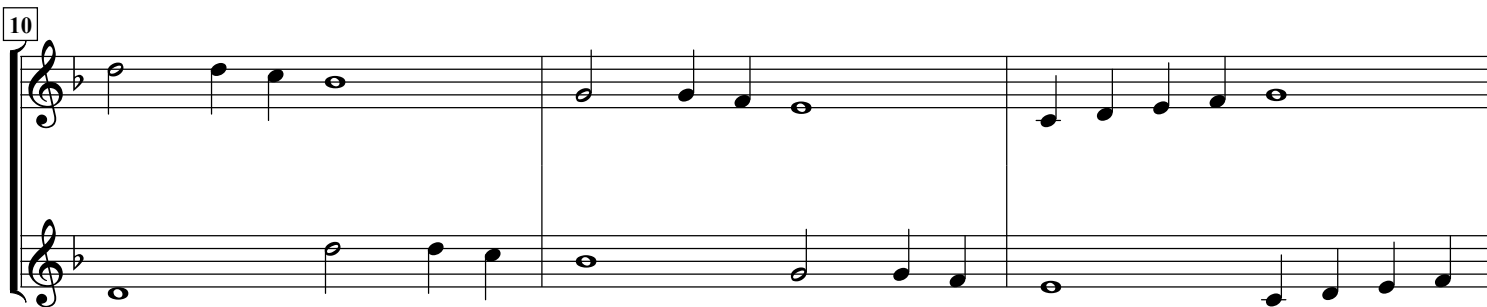
4



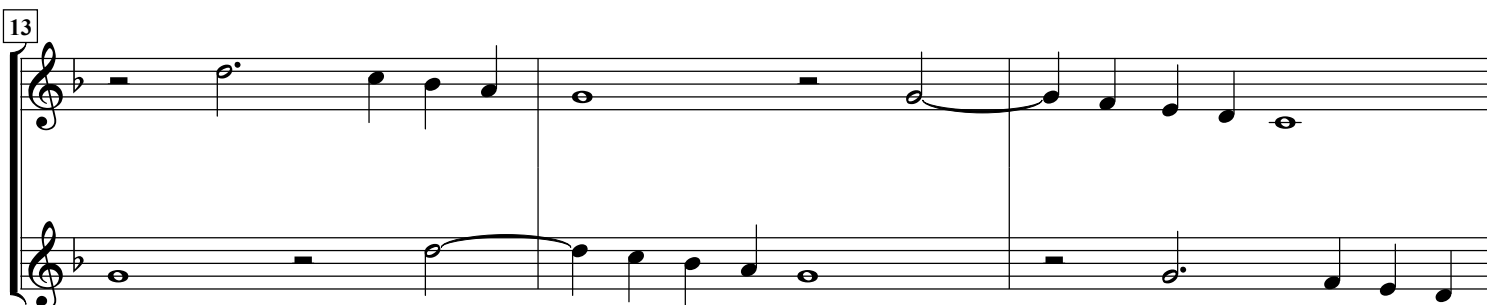
7



10



13



16

Trumpet 1

Trumpet 2

This system contains measures 16, 17, and 18. Both Trumpet 1 and Trumpet 2 are in the key of B-flat major (two flats). Trumpet 1 starts with a whole rest in measure 16, followed by a half note B-flat, and then a quarter note melody. Trumpet 2 starts with a whole note B-flat in measure 16, followed by a half note melody. The staves are connected by a brace on the left.

19

This system contains measures 19, 20, and 21. The notation continues for both Trumpet 1 and Trumpet 2. Trumpet 1 has a whole rest in measure 19, followed by a half note B-flat, and then a quarter note melody. Trumpet 2 has a whole note B-flat in measure 19, followed by a half note melody. The staves are connected by a brace on the left.

22

This system contains measures 22, 23, and 24. The notation continues for both Trumpet 1 and Trumpet 2. Trumpet 1 has a whole note B-flat in measure 22, followed by a half note melody. Trumpet 2 has a quarter note melody in measure 22, followed by a half note melody. The staves are connected by a brace on the left.

25

This system contains measures 25, 26, and 27. The notation continues for both Trumpet 1 and Trumpet 2. Trumpet 1 has a whole note B-flat in measure 25, followed by a half note melody. Trumpet 2 has a quarter note melody in measure 25, followed by a half note melody. The staves are connected by a brace on the left.

28

This system contains measures 28, 29, and 30. The notation continues for both Trumpet 1 and Trumpet 2. Trumpet 1 has a half note B-flat in measure 28, followed by a quarter note melody. Trumpet 2 has a quarter note melody in measure 28, followed by a half note melody. The staves are connected by a brace on the left.

31

Trumpet 1

Trumpet 2

This system contains measures 31, 32, and 33. Both Trumpet 1 and Trumpet 2 are in treble clef with a key signature of one flat (B-flat). The music consists of half notes and whole notes, with some rests. In measure 31, Trumpet 1 has a whole rest followed by a half note G4, a half note A4, and a half note B4. Trumpet 2 has a whole note G3. In measure 32, Trumpet 1 has a whole note G4, a whole rest, and a half note A4. Trumpet 2 has a half note G3, a half note A3, and a half note B3. In measure 33, Trumpet 1 has a half note A4, a half note B4, and a whole note G4. Trumpet 2 has a whole rest, a half note A3, and a half note B3.

34

This system contains measures 34, 35, and 36. Both Trumpet 1 and Trumpet 2 are in treble clef with a key signature of one flat. In measure 34, Trumpet 1 has a whole rest, a half note G4, a half note A4, and a half note B4. Trumpet 2 has a whole note G3. In measure 35, Trumpet 1 has a whole note G4, a whole rest, and a half note A4. Trumpet 2 has a half note G3, a half note A3, and a half note B3. In measure 36, Trumpet 1 has a half note A4, a half note B4, and a whole note G4. Trumpet 2 has a whole rest, a half note A3, and a half note B3.

37

This system contains measures 37, 38, and 39. Both Trumpet 1 and Trumpet 2 are in treble clef with a key signature of one flat. In measure 37, Trumpet 1 has a whole rest, a half note G4, a half note A4, and a half note B4. Trumpet 2 has a whole note G3. In measure 38, Trumpet 1 has a whole note G4, a whole rest, and a half note A4. Trumpet 2 has a half note G3, a half note A3, and a half note B3. In measure 39, Trumpet 1 has a half note A4, a half note B4, and a whole note G4. Trumpet 2 has a whole rest, a half note A3, and a half note B3.

40

This system contains measures 40, 41, and 42. Both Trumpet 1 and Trumpet 2 are in treble clef with a key signature of one flat. In measure 40, Trumpet 1 has a whole rest, a half note G4, a half note A4, and a half note B4. Trumpet 2 has a whole note G3. In measure 41, Trumpet 1 has a whole note G4, a whole rest, and a half note A4. Trumpet 2 has a half note G3, a half note A3, and a half note B3. In measure 42, Trumpet 1 has a half note A4, a half note B4, and a whole note G4. Trumpet 2 has a whole rest, a half note A3, and a half note B3.

43

This system contains measures 43, 44, and 45. Both Trumpet 1 and Trumpet 2 are in treble clef with a key signature of one flat. In measure 43, Trumpet 1 has a whole rest, a half note G4, a half note A4, and a half note B4. Trumpet 2 has a whole note G3. In measure 44, Trumpet 1 has a whole note G4, a whole rest, and a half note A4. Trumpet 2 has a half note G3, a half note A3, and a half note B3. In measure 45, Trumpet 1 has a half note A4, a half note B4, and a whole note G4. Trumpet 2 has a whole rest, a half note A3, and a half note B3.

46

Trumpet 1

Trumpet 2

This system contains measures 46, 47, and 48. Both Trumpet 1 and Trumpet 2 are in B-flat major (one flat). Trumpet 1 starts with a whole rest in measure 46, then plays a half note G4, followed by quarter notes A4, Bb4, C5, D5, and E5. In measure 47, it plays a whole note F5. Trumpet 2 starts with a whole note Bb3 in measure 46, followed by a whole rest in measure 47, and then a half note G4 in measure 48. The system concludes with a double bar line.

49

This system contains measures 49, 50, and 51. Both staves are in B-flat major. Measure 49: The top staff has a whole rest, followed by quarter notes G4, A4, Bb4, and C5. The bottom staff has a whole note Bb3. Measure 50: The top staff has quarter notes D5, C5, Bb4, and A4. The bottom staff has quarter notes G4, F4, E4, and D4. Measure 51: The top staff has quarter notes C5, Bb4, A4, and G4. The bottom staff has a half note F4. The system concludes with a double bar line.

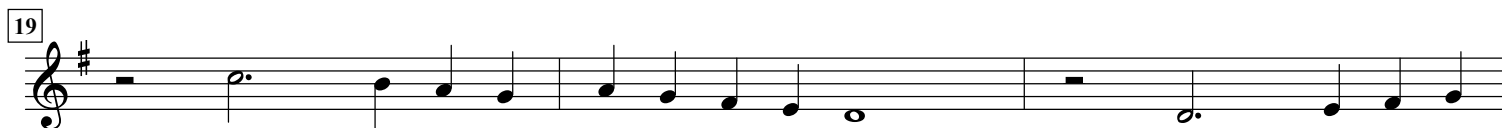
52

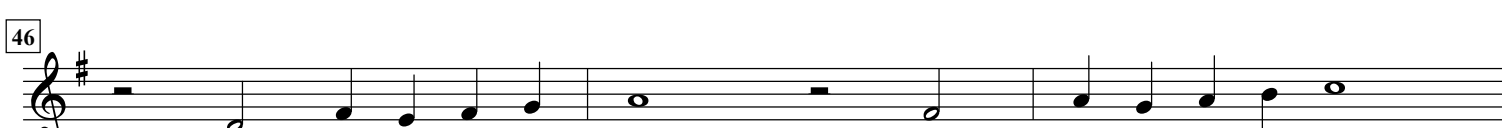
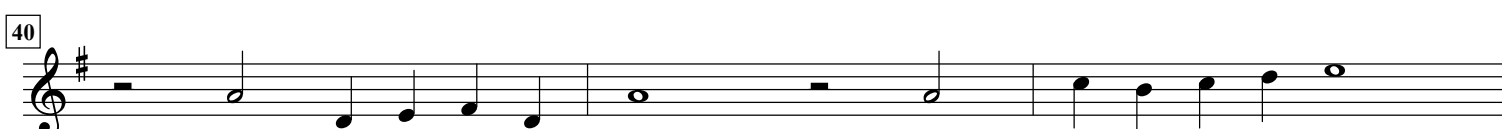
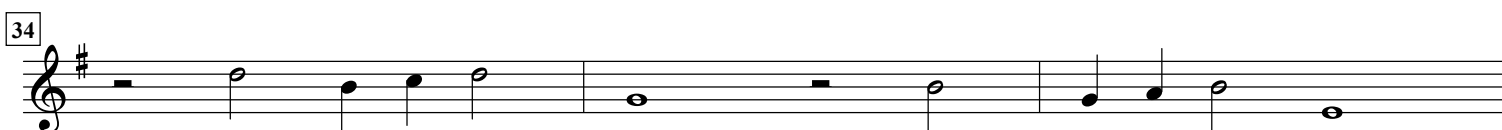
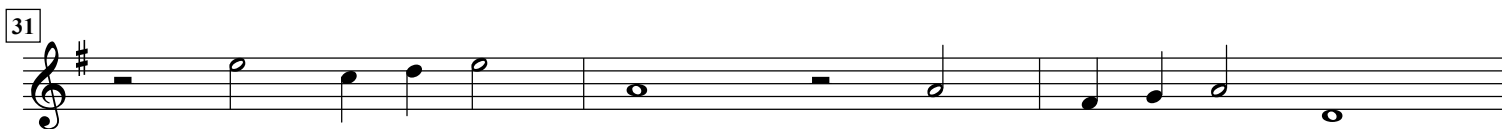
This system contains measures 52 and 53. Measure 52: The top staff has a half note G4, followed by a quarter note A4, and then a whole note Bb4. The bottom staff has a half note G4, followed by a quarter note A4, and then a whole note Bb4. Measure 53: Both staves have whole rests. The system concludes with a double bar line.

Duo for Trumpets

arr. Hans Jorgen Messerschmidt

Adam Gumpelzhaimer (1559-1625)

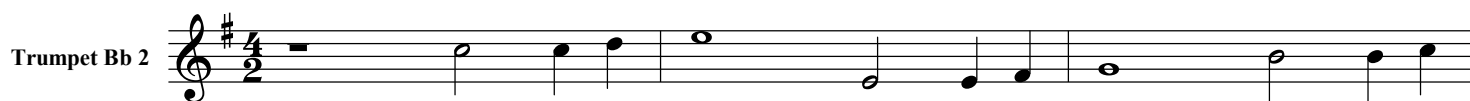


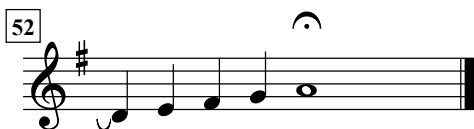
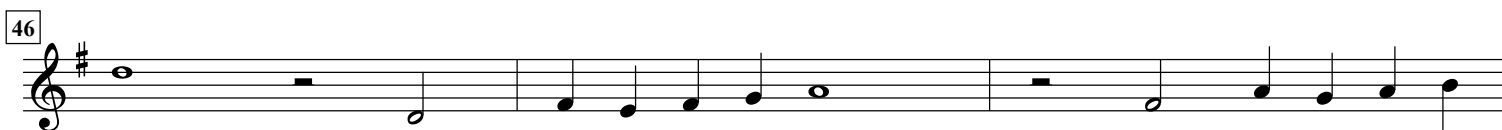


Duo for Trumpets

arr. Hans Jorgen Messerschmidt

Adam Gumpelzhaimer (1559-1625)





Duo for Trumpets

arr. Hans Jorgen Messerschmidt

Adam Gumpelzhaimer (1559-1625)

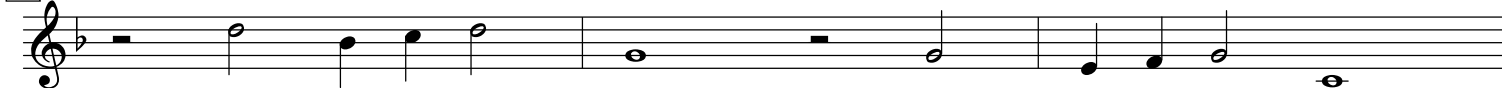


28

Trumpet C 1



31



34



37



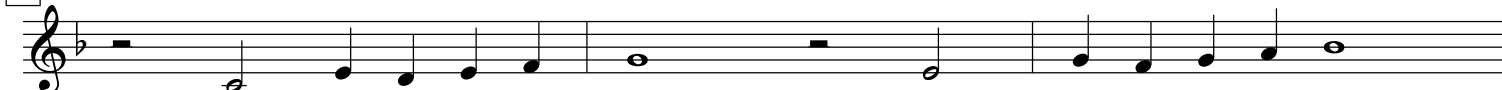
40



43



46



49



52



Duo for Trumpets

arr. Hans Jorgen Messerschmidt

Adam Gumpelzhaimer (1559-1625)

