

Piano Sonata No. 13 in E-Flat Major

Viola

Ludwig van Beethoven

Joshua Choe

Andante

6 *pp* *cresc.* *f* *dim.* *p* *p* *pp*

11 *pp*

16 *cresc.* *f* *p* *pp* *cresc.* *f*

21 *p* *pp*

27 *pp* *p* *cresc.*

33 *f* *dim.* *p* *cresc.* *f* *dim.* *p*

Allegro

f *p* *f* *p* *cresc.*

44

p

48

p *p* *f* *f* *f* *p* *cresc.*

53

p *p* *p* *p* *f*

58

f *f* *p* *cresc.*

62

f *sf*

tempo 1

65

pp *pp*

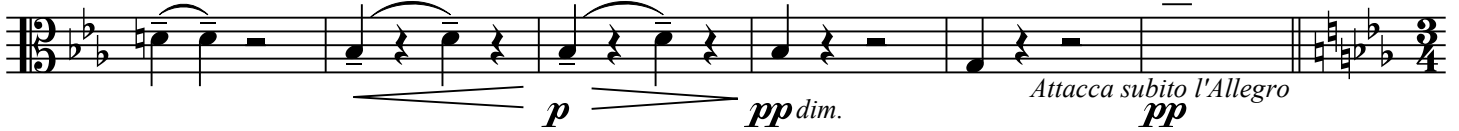
71

pp cresc. *f dim.* *p*

77

pp *cresc.* *f* *dim.* *p* *pp*

83



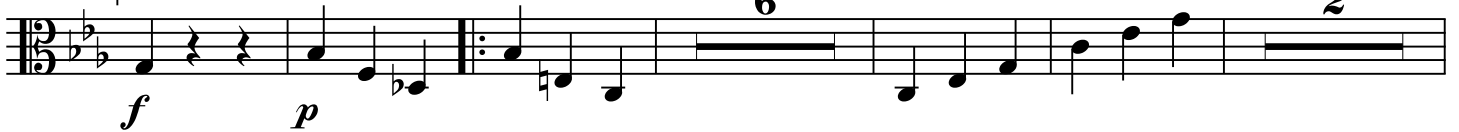
89

Allegro molto vivace

98



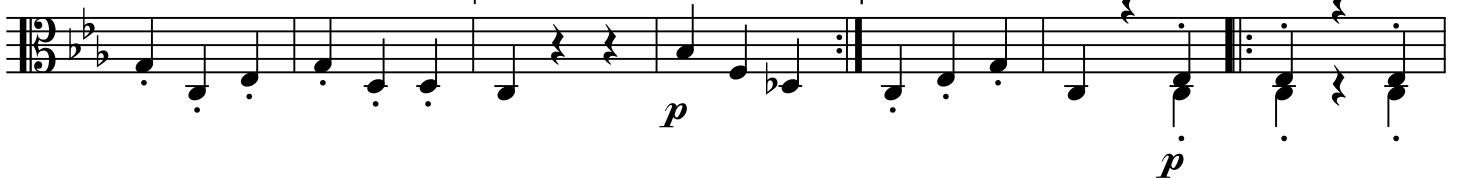
106



119



128



135



142



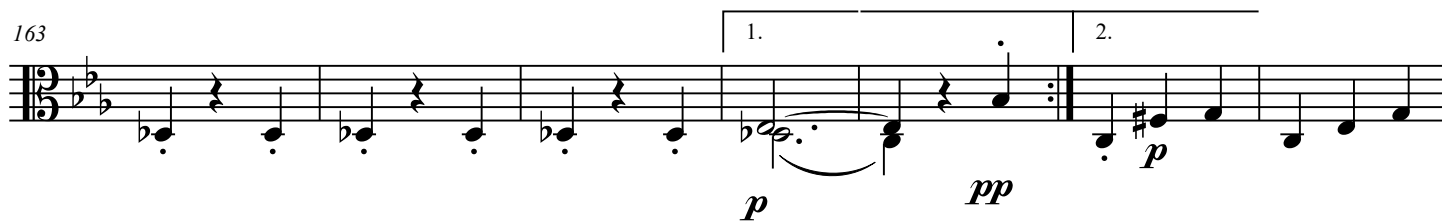
149



156



163



170



179



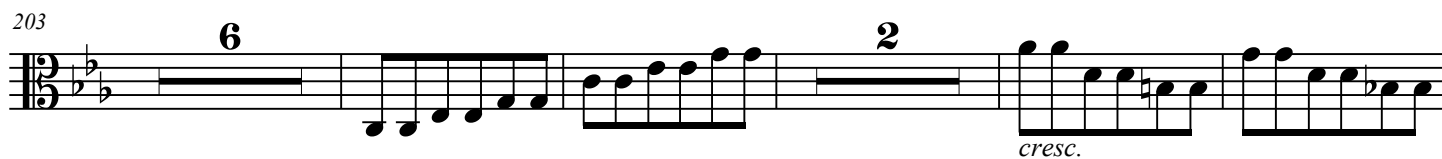
187



195



203



215 **2** **2** **f**

223 **sf sf sf sf ff sf**

230 **sf sf** *Attacca subito l'Adagio* **sf**

Adagio con espressione

237 **p** **cresc.** **fp** **cresc.** **fp**

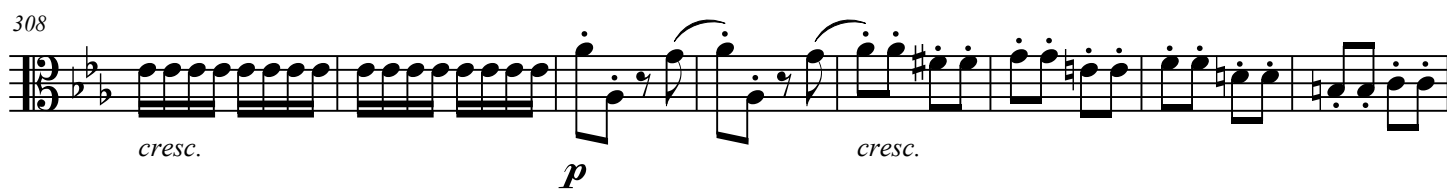
242 **cresc. mf dim. p pp cresc. mp dim. p cresc.**

248 **p cresc. fp cresc. dim. pp p**

254 **cresc. fp** **cresc.** **fp** **cresc.**

259 **dim. p** **f** **dim. pp** *Attacca subito l'Allegro vivace*

Allegro vivace



316



321



325



329



334



339



347



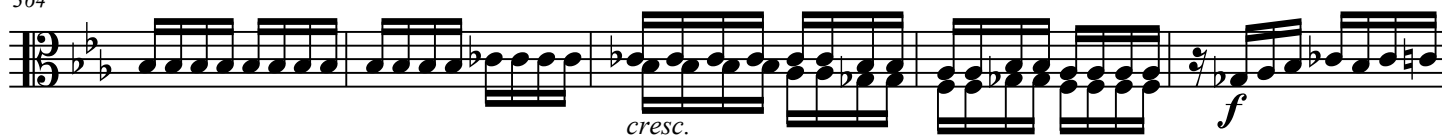
353



359



364



369



374



380



389



396



402



410



418



431



438



444



452



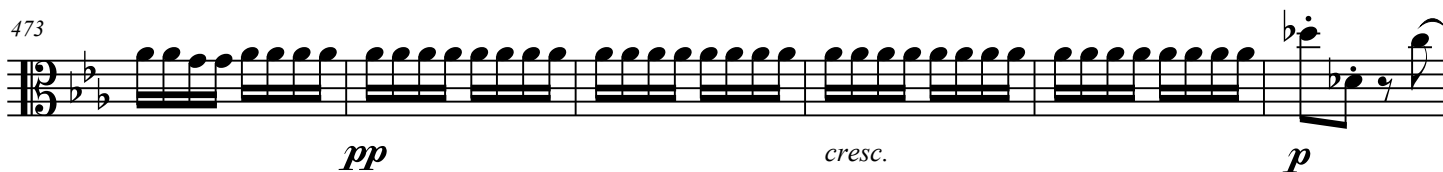
460



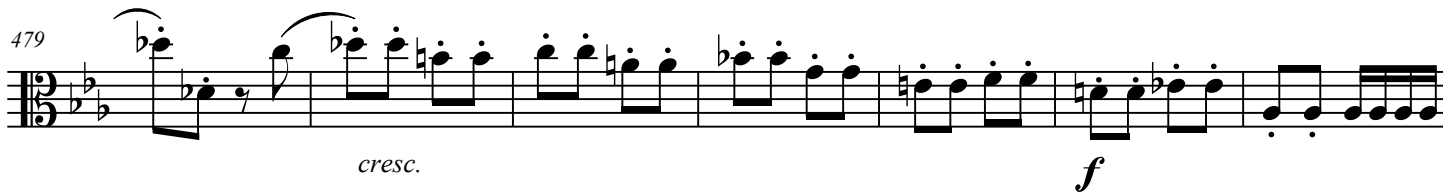
467



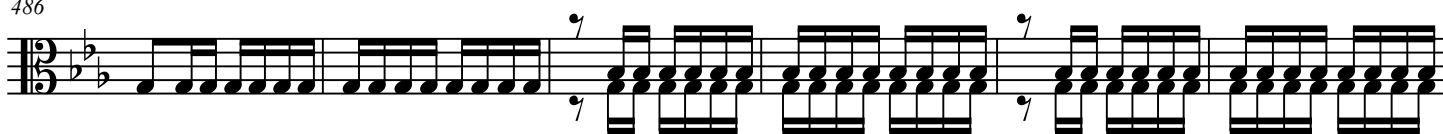
473



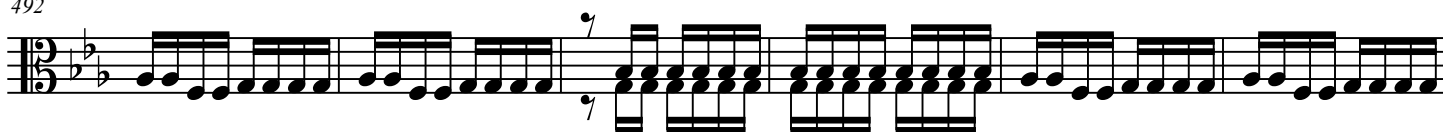
479



486



492



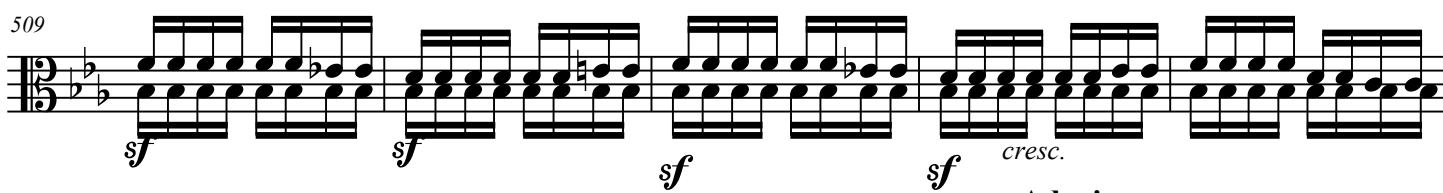
498



504



509



Adagio

514



520

525

533

542

fp *cresc.* *fp* *cresc.* *dim.*

p *p* *p* **Presto**

cresc. *f*

ff

Detailed description: This image shows a page of musical notation for the Piano Sonata No. 13 in E-Flat Major, page 11. The score is written in bass clef with a key signature of two flats (B-flat and E-flat). The time signature is 2/4. The page contains measures 520 through 542. Measure 520 starts with a forte-piano (*fp*) dynamic and features a series of eighth-note chords. Measure 525 begins with a piano (*p*) dynamic and includes a 'Presto' tempo marking. Measure 533 shows a crescendo (*cresc.*) leading to a forte (*f*) dynamic. Measure 542 ends with a fortissimo (*ff*) dynamic. The notation includes various musical symbols such as slurs, accents, and dynamic markings.