

Suite 3

Ouverture

*Johann Kaspar
Ferdinand Fischer*

Sopranino

Measures 1-35 of the Sopranino part for Suite 3 Ouverture. The score is written in treble clef with a key signature of two flats (Bb and Eb) and a 2/2 time signature. The notation includes various note values, rests, and dynamic markings. Measure numbers 5, 10, 14, 18, 22, 26, 30, and 35 are indicated at the start of their respective staves. The piece concludes with a double bar line and repeat dots at the end of measure 35.

Menuet

Measures 1-9 of the Menuet part for Suite 3. The score is written in treble clef with a key signature of two flats (Bb and Eb) and a 3/4 time signature. The notation includes various note values, rests, and dynamic markings. Measure numbers 1 and 9 are indicated at the start of their respective staves. The piece concludes with a double bar line and repeat dots at the end of measure 9.

Gavotte

Musical score for Gavotte, Soprano part, measures 1-14. The key signature is B-flat major (two flats). The time signature is common time (C). The melody is written on a single staff. Measure numbers 4, 9, and 14 are indicated at the start of their respective lines. The piece concludes with a repeat sign and a final cadence.

Trio

Musical score for Trio, Soprano part, measures 1-11. The key signature is B-flat major (two flats). The time signature is common time (C). The melody is written on a single staff. Measure numbers 6 and 11 are indicated at the start of their respective lines. The piece concludes with a repeat sign and a final cadence.

Gavotte da capo

Chaconne

Musical score for Chaconne, Soprano part, measures 1-13. The key signature is B-flat major (two flats). The time signature is 3/4. The melody is written on a single staff. Measure numbers 7 and 13 are indicated at the start of their respective lines. The piece concludes with a repeat sign and a final cadence.

20

27

33

39

47

55

63

71

80

87

94

102

110

1 2

Suite 3

Ouverture

*Johann Kaspar
Ferdinand Fischer*

Soprano

5

10

14

18

22

26

30

35

Menuet

9

Gavotte

Musical score for Gavotte, Soprano part. The score is written in treble clef, key of B-flat major (two flats), and common time (C). It consists of four staves of music. The first staff starts with a treble clef and a key signature of two flats. The second staff is marked with a '4' at the beginning. The third staff is marked with a '9' at the beginning. The fourth staff is marked with a '14' at the beginning. The piece ends with a double bar line and repeat signs.

Trio

Musical score for Trio, Soprano part. The score is written in treble clef, key of B-flat major (two flats), and common time (C). It consists of three staves of music. The first staff starts with a treble clef and a key signature of two flats. The second staff is marked with a '6' at the beginning. The third staff is marked with an '11' at the beginning. The piece ends with a double bar line and repeat signs.

Gavotte da capo

Chaconne

Musical score for Chaconne, Soprano part. The score is written in treble clef, key of B-flat major (two flats), and 3/4 time. It consists of four staves of music. The first staff starts with a treble clef and a key signature of two flats. The second staff is marked with a '9' at the beginning. The third staff is marked with an '18' at the beginning. The fourth staff is marked with a '27' at the beginning. The piece ends with a double bar line and repeat signs.

35



43



50



58



66



73



82



89



95



102



110



Suite 3

Ouverture

*Johann Kaspar
Ferdinand Fischer*

Alto

5

9

14

18

22

26

29

32

36

Menuet

9

Gavotte

Musical score for Gavotte, Alto part, measures 1-15. The key signature is B-flat major (two flats). The time signature is common time (C). The melody consists of eighth and quarter notes, with a repeat sign at measure 10.

5

10

15

Trio

Musical score for Trio, Alto part, measures 1-11. The key signature is B-flat major (two flats). The time signature is common time (C). The melody consists of eighth and quarter notes, with a repeat sign at measure 6.

6

11

Gavotte da capo

Chaconne

Musical score for Chaconne, Alto part, measures 1-23. The key signature is B-flat major (two flats). The time signature is 3/4. The melody consists of eighth and quarter notes, with a repeat sign at measure 15.

7

15

23

31



38



45



51



57



64



71



77



85



93



101



109



1

2

Suite 3

Ouverture

*Johann Kaspar
Ferdinand Fischer*

Tenore

Musical score for Tenore, Suite 3 Ouverture, measures 1-36. The score is written in treble clef, 2/2 time, and B-flat major. It consists of ten staves of music. The first staff (measures 1-4) begins with a half rest, followed by a dotted half note, a quarter note, and a half note. The second staff (measures 5-8) continues the melody. The third staff (measures 9-13) includes a first ending bracket over measures 11-12 and a second ending bracket over measure 13. The fourth staff (measures 14-17) begins with a repeat sign and a half rest. The fifth staff (measures 18-21) continues the melody. The sixth staff (measures 22-25) continues the melody. The seventh staff (measures 26-28) continues the melody. The eighth staff (measures 29-32) continues the melody. The ninth staff (measures 33-35) continues the melody. The tenth staff (measures 36-38) includes a first ending bracket over measures 36-37 and a second ending bracket over measure 38.

Menuet

Musical score for Menuet, Suite 3, measures 1-9. The score is written in treble clef, 3/4 time, and B-flat major. It consists of two staves of music. The first staff (measures 1-8) begins with a half note, followed by a quarter note, a half note, and a quarter note. The second staff (measures 9-16) begins with a repeat sign and a half rest.

Gavotte

Musical score for Gavotte, Tenor part, measures 1-15. The key signature is B-flat major (two flats). The time signature is common time (C). The score consists of four staves. The first staff contains measures 1-4. The second staff contains measures 5-8, with a repeat sign at the end of measure 8. The third staff contains measures 9-12, with a plus sign above the eighth note in measure 10. The fourth staff contains measures 13-15, with a repeat sign at the end of measure 15.

Trio tacet

Gavotte da capo

Chaconne

Musical score for Chaconne, Tenor part, measures 1-30. The key signature is B-flat major (two flats). The time signature is 3/4. The score consists of five staves. The first staff contains measures 1-6. The second staff contains measures 7-13. The third staff contains measures 14-21, with a plus sign above the eighth note in measure 18. The fourth staff contains measures 22-29. The fifth staff contains measures 30-36, with a plus sign above the eighth note in measure 31.

37



43



53



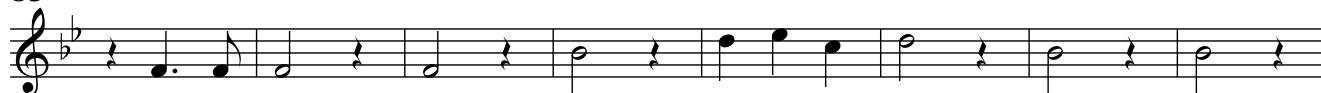
62



72



83



91



98



104



111



Suite 3

Ouverture

*Johann Kaspar
Ferdinand Fischer*

Basso

5

10

14

18

22

26

30

35

Menuet

10

Gavotte



Trio tacet

Gavotte da capo

Chaconne



45



54



61



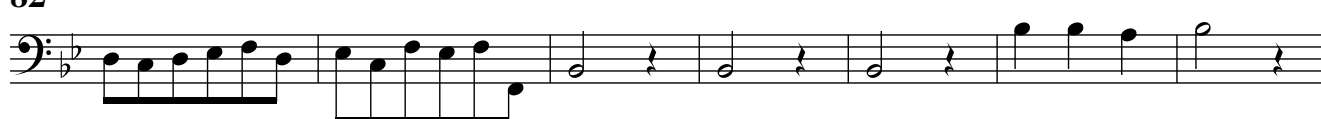
69



77



82



89



97



104



108



112

